

NEW MEXICO OIL CONSERVATION COMMISSION
WELL LOCATION AND ACREAGE DEDICATION PLAT

Form C-102
Supersedes C-128
Effective 1-1-65

All distances must be from the **WELLS OFFICE O. C. G.** boundaries of the Section.

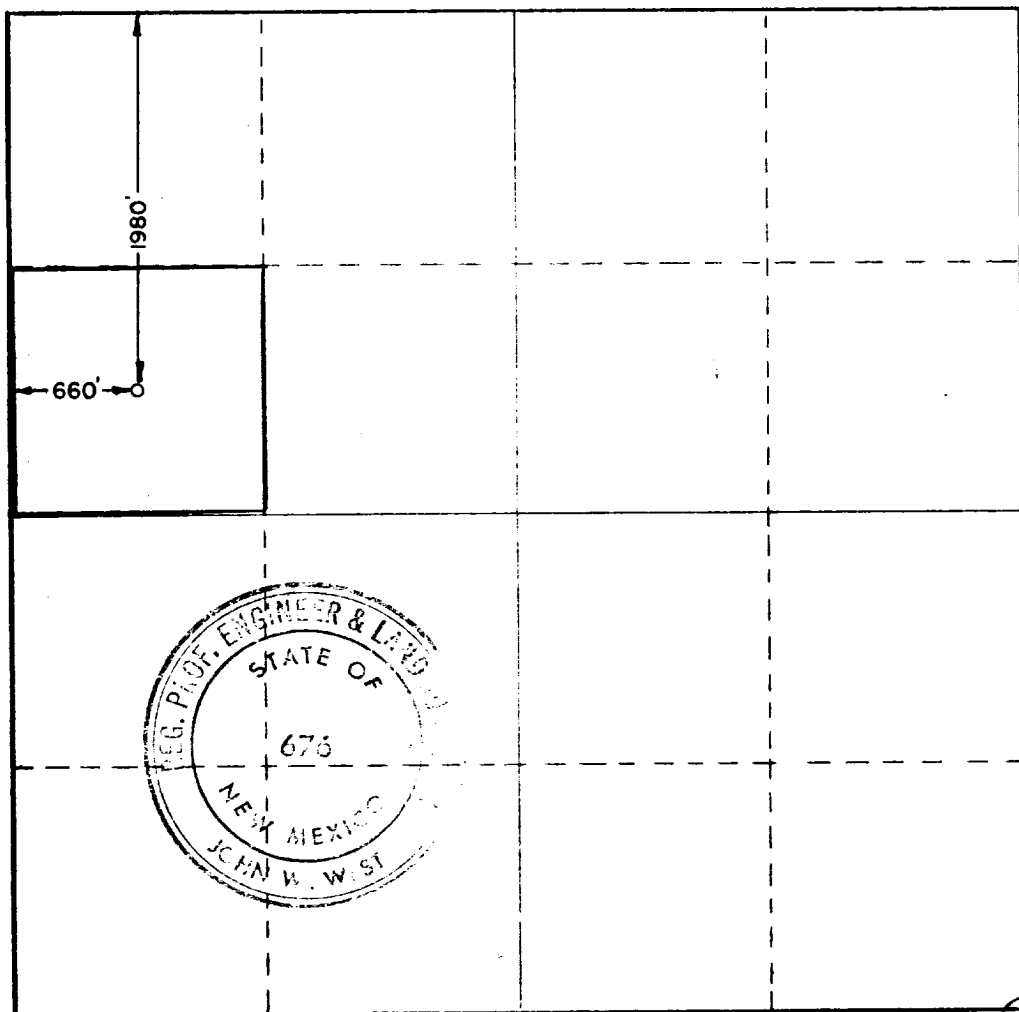
Operator SOUTHERN PETROLEUM EXPLORATION, INC.		Lease MAR 28 '7 51 AM '66		Well No. 2
Unit Letter E	Section 4	Township 8 SOUTH	Range 33 EAST	County CHAVES
Actual Footage Location of Well: 1980 feet from the NORTH line and 660 feet from the WEST line				
Ground Level Elev. 4416.1	Producing Formation San Andres		Pool Chavezoo	Dedicated Acreage: 40 Acres

1. Outline the acreage dedicated to the subject well by colored pencil or hachure marks on the plat below.
2. If more than one lease is dedicated to the well, outline each and identify the ownership thereof (both as to working interest and royalty).
3. If more than one lease of different ownership is dedicated to the well, have the interests of all owners been consolidated by communitization, unitization, force-pooling, etc?

Yes No If answer is "yes," type of consolidation _____

If answer is "no," list the owners and tract descriptions which have actually been consolidated. (Use reverse side of this form if necessary.) _____

No allowable will be assigned to the well until all interests have been consolidated (by communitization, unitization, forced-pooling, or otherwise) or until a non-standard unit, eliminating such interests, has been approved by the Commission.



CERTIFICATION

I hereby certify that the information contained herein is true and complete to the best of my knowledge and belief.

B. C. Hicks

Name
B. C. Hicks

Position
District Land Manager

Company
Southern Pet. Expl., Inc.

Date
March 25, 1966

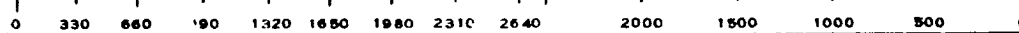
I hereby certify that the well location shown on this plat was plotted from field notes of actual surveys made by me or under my supervision, and that the same is true and correct to the best of my knowledge and belief.

Date Surveyed
3/22/66

Registered Professional Engineer and/or Land Surveyor

John W. West

Certificate No.
NM PE & LS NO. 676



10
10