

NO. OF COPIES RECEIVED		
DISTRIBUTION		
SANTA FE		
FILE		
U.S.G.S.		
LAND OFFICE		
OPERATOR		

NEW MEXICO OIL CONSERVATION COMMISSION

Form C-101  
Revised 1-1-65

5A. Indicate Type of Lease  
STATE  FEE

5. State Oil & Gas Lease No.  
LG-1398

APPLICATION FOR PERMIT TO DRILL, DEEPEN, OR PLUG BACK

1a. Type of Work  
b. Type of Well DRILL  DEEPEN  PLUG BACK   
OIL WELL  GAS WELL  OTHER  SINGLE ZONE  MULTIPLE ZONE

2. Name of Operator  
Dalport Oil Corporation

3. Address of Operator  
3471 First National Bank Bldg., Dallas, Texas 75202

4. Location of Well UNIT LETTER K LOCATED 2310 FEET FROM THE West LINE AND 1980 FEET FROM THE South LINE OF SEC. 16 TWP. 14S RGE. 30E NMPM

7. Unit Agreement Name

8. Farm or Lease Name  
Bell "A" State

9. Well No.  
1

10. Field and Pool or Well Name  
~~Proposed~~  
Vest Ranch-Queen

12. County  
Chaves

19. Proposed Depth  
2200

19A. Formation  
Queen

20. Rotary or C.T.  
Rotary

21. Elevations (Show whether DF, RT, etc.)

21A. Kind & Status Plug. Bond  
Statewide

21B. Drilling Contractor  
Cactus Drilling Corp.

22. Approx. Date Work will start  
Sept. 5, 1974

23. PROPOSED CASING AND CEMENT PROGRAM

SIZE OF HOLE	SIZE OF CASING	WEIGHT PER FOOT	SETTING DEPTH	SACKS OF CEMENT	EST. TOP
15	10-3/4"	32#	120	120 "C" + 2% c.c.	circulate
7-7/8"	4 1/2"	9#	2200	125 sx lite + 150 sx "C"	1000

Will evaluate Queen at approx. 2100'. If productive, will cement new 4 1/2" - 9# casing at approx. 2200', perforate w/2 SPF, treat w/750 gal 15% acid, and possibly frac w/30,000 gal of 2% KCl water + 45,000# sand.

APPROVAL VALID  
FOR 90 DAYS UNLESS  
DRILLING COMMENCED,

EXPIRES 12-3-74

IN ABOVE SPACE DESCRIBE PROPOSED PROGRAM; IF PROPOSAL IS TO DEEPEN OR PLUG BACK, GIVE DATA ON PRESENT PRODUCTIVE ZONE AND PROPOSED NEW PRODUCTIVE ZONE. GIVE BLOWOUT PREVENTER PROGRAM, IF ANY.

I hereby certify that the information above is true and complete to the best of my knowledge and belief.

Signed John M. Lampert Title Geologist Date Aug. 23, 1974

(This space for State Use)

APPROVED BY [Signature] TITLE SUPERVISOR DISTRICT 11 DATE SEP 2 1974

CONDITIONS OF APPROVAL, IF ANY:



NEW MEXICO OIL CONSERVATION COMMISSION  
WELL LOCATION AND ACREAGE DEDICATION PL.

Form C-102  
Supersedes C-128  
Effective 1-1-65

All distances must be from the outer boundaries of the Section.

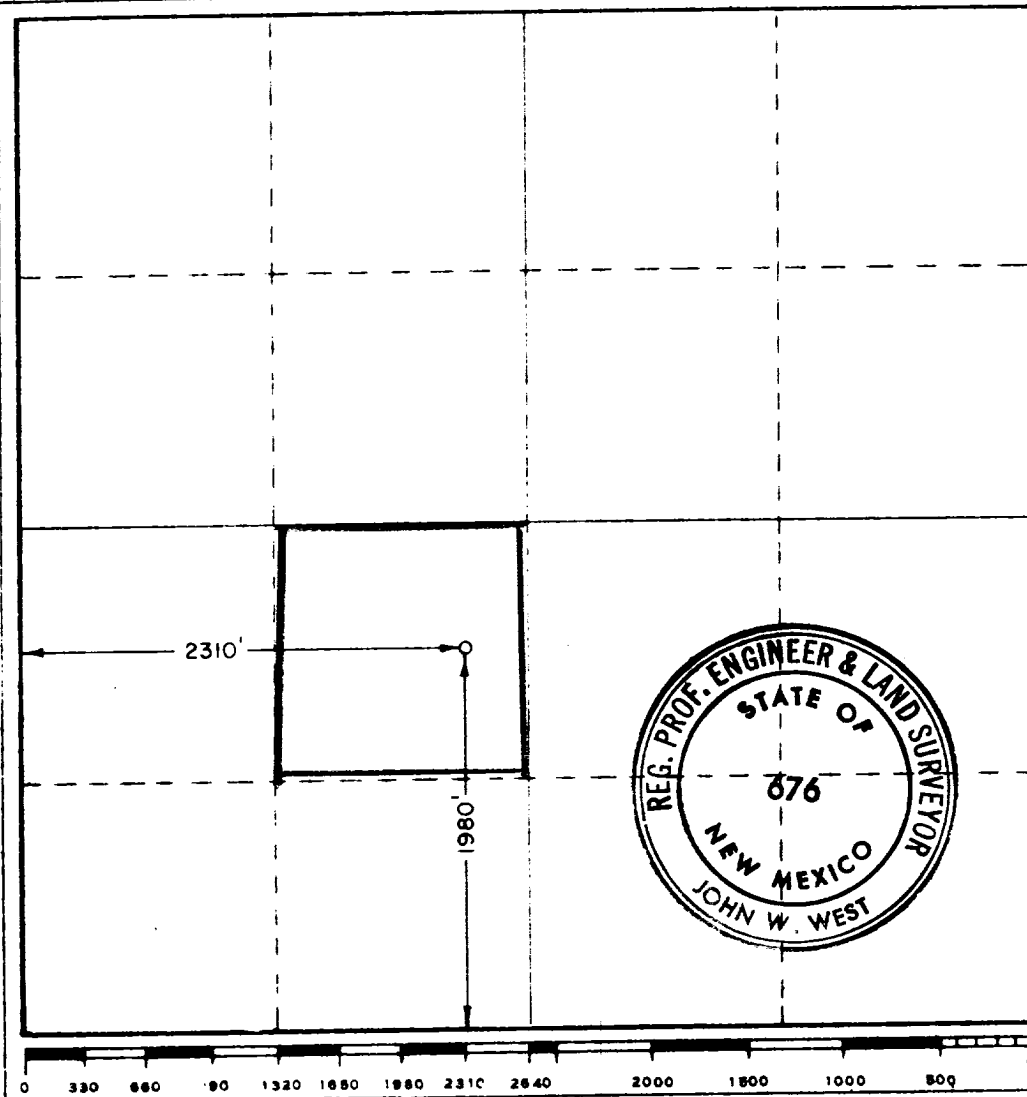
Operator <b>Dalport Oil Corporation</b>			Lease <b>Bell "A" State</b>		Well No. <b>1</b>
Unit Letter <b>K</b>	Section <b>16</b>	Township <b>14 South</b>	Range <b>30 East</b>	County <b>Chaves</b>	
Actual Footage Location of Well: <b>1980</b> feet from the <b>South</b> line and <b>2310</b> feet from the <b>West</b> line					
Ground Level Elev. <b>3845.1</b>	Producing Formation <b>Queen</b>		Pool <b>Vest Ranch - Queen</b>		Dedicated Acreage: <b>40</b> Acres

- Outline the acreage dedicated to the subject well by colored pencil or hachure marks on the plat below.
- If more than one lease is dedicated to the well, outline each and identify the ownership thereof (both as to working interest and royalty).
- If more than one lease of different ownership is dedicated to the well, have the interests of all owners been consolidated by communitization, unitization, force-pooling, etc?

Yes  No If answer is "yes," type of consolidation \_\_\_\_\_

If answer is "no," list the owners and tract descriptions which have actually been consolidated. (Use reverse side of this form if necessary.) \_\_\_\_\_

No allowable will be assigned to the well until all interests have been consolidated (by communitization, unitization, forced-pooling, or otherwise) or until a non-standard unit, eliminating such interests, has been approved by the Commission.



CERTIFICATION

I hereby certify that the information contained herein is true and complete to the best of my knowledge and belief.

*Leon M. Lampert*  
Name

**Leon M. Lampert**

Position  
**Geologist**

Company  
**Dalport Oil Corporation**

Date  
**July 16, 1974**

I hereby certify that the well location shown on this plat was plotted from field notes of actual surveys made by me or under my supervision, and that the same is true and correct to the best of my knowledge and belief.

Date Surveyed  
**July 11, 1974**

Registered Professional Engineer and/or Land Surveyor

*John W. West*  
Certificate No.

**676**

11