

UNITED STATES  
DEPARTMENT OF THE INTERIOR  
GEOLOGICAL SURVEY

5. LEASE DESIGNATION AND SERIAL NO.  
NM 19197

6. IF INDIAN, ALLOTTEE OR TRIBE NAME

7. UNIT AGREEMENT NAME

8. FARM OR LEASE NAME  
Tom-D

9. WELL NO.  
1

10. FIELD AND POOL, OR WELDCAT  
Undesignated-San Andres

11. SEC., T. R. M., OR BLK. AND SURVEY OR AREA  
3, 8-S, 31-E

12. COUNTY OR PARISH  
Chaves

13. STATE  
New Mexico

APPLICATION FOR PERMIT TO DRILL, DEEPEN, OR PLUG BACK

1a. TYPE OF WORK  
DRILL  DEEPEN  PLUG BACK

b. TYPE OF WELL  
OIL WELL  GAS WELL  OTHER  SINGLE ZONE  MULTIPLE ZONE

2. NAME OF OPERATOR  
Phillips Petroleum Company

3. ADDRESS OF OPERATOR  
Room 711, Phillips Bldg., Odessa, Texas 79761

4. LOCATION OF WELL (Report location clearly and in accordance with any State requirements.)\*  
At surface  
(Unit E) 1980' FN, 660' FW lines  
At proposed prod. zone  
Same

14. DISTANCE IN MILES AND DIRECTION FROM NEAREST TOWN OR POST OFFICE\*  
27 miles west-northwest Caprock, New Mexico

15. DISTANCE FROM PROPOSED\* LOCATION TO NEAREST PROPERTY OR LEASE LINE, FT. (Also to nearest drig. line, if any)  
660' FW

16. NO. OF ACRES IN LEASE  
520<sup>+</sup>

17. NO. OF ACRES ASSIGNED TO THIS WELL  
40

18. DISTANCE FROM PROPOSED LOCATION\* TO NEAREST WELL, DRILLING, COMPLETED, OR APPLIED FOR, ON THIS LEASE, FT.  
First Well

19. PROPOSED DEPTH  
4100'

20. ROTARY OR CABLE TOOLS  
rotary

21. ELEVATIONS (Show whether DF, RT, GR, etc.)  
Later

22. APPROX. DATE WORK WILL START\*  
Upon approval

23. PROPOSED CASING AND CEMENTING PROGRAM

SIZE OF HOLE	SIZE OF CASING	WEIGHT PER FOOT	SETTING DEPTH	QUANTITY OF CEMENT
12-1/4"	8-5/8"	28.55# X-42	400' (400 sx Class H w/2% CaCl <sub>2</sub> Circ at surf.)	
7-7/8"	4-1/2"	9.5# K-55	TD (480 sx TR1W w/10% DD + 7.5# salt/sx. (followed by 275 sx Class H cmt.)	

Mud additives as required for control.

BOP Equipment: Series 900, 3000# WP (Figure 7 attached.)

**RECEIVED**  
OCT - 7 1975  
GEOLOGICAL SURVEY  
ARTESIA, NEW MEXICO

IN ABOVE SPACE DESCRIBE PROPOSED PROGRAM: If proposal is to deepen or plug back, give data on present productive zone and proposed new productive zone. If proposal is to drill or deepen directionally, give pertinent data on subsurface locations and measured and true vertical depths. Give blowout preventer program, if any.

24. SIGNED W. J. Mueller TITLE Engineering Advisor DATE 10-1-75

(This space for Federal or State office use)

PERMIT NO. \_\_\_\_\_ APPROVAL DATE \_\_\_\_\_

**APPROVED**  
OCT 29 1975  
L. BEEKWIND  
ACTING DISTRICT ENGINEER

APPROVAL IS RESCINDED IF OPERATIONS ARE NOT COMMENCED WITHIN 3 MONTHS.  
OCT 29 1975

\*See Instructions On Reverse Side

**RECEIVED**

**OCT 30 1975**

**O. C. C.  
ARTESIA, OFFICE**

**RECEIVED**

**OCT 30 1975**

**COMMUNITY COMM.  
ARTESIA, CA**

NEW MEXICO OIL CONSERVATION COMMISSION  
WELL LOCATION AND ACREAGE DEDICATION PLAT

Form O-102  
Supersedes L-128  
Effective 1-1-65

All distances must be from the outer boundaries of the Section

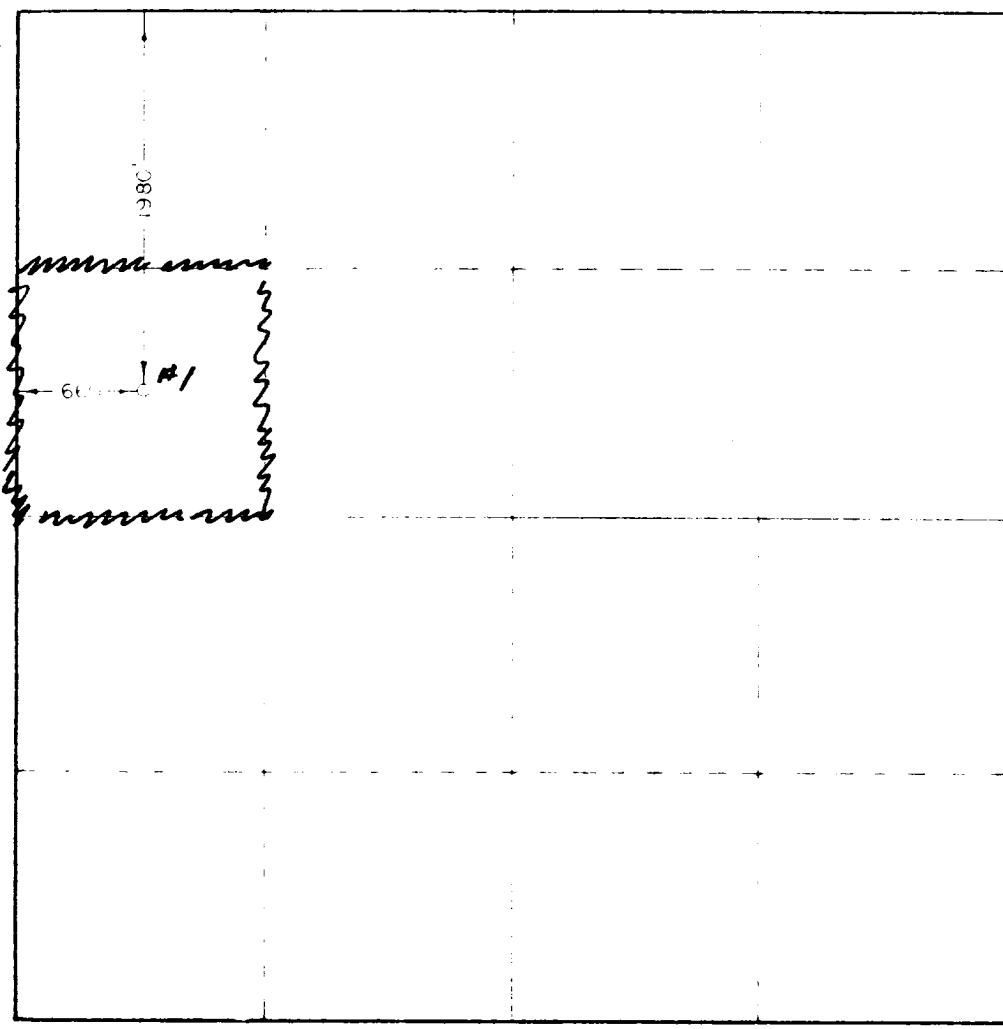
PHILLIPS PETROLEUM COMPANY			Lease Tom - D		Well No. 1
Section E	Range 3	Tract 8 South	Range 31 East	County Chaves	
Location of Well: 660 feet from the West			1980 feet from the North		
Elev. 4290.1	Prospect San Andres		Field Undesignated - San Andres		Production No

- Outline the acreage dedicated to the subject well by colored pencil or hatchure marks on the plat below.
- If more than one lease is dedicated to the well, outline each and identify the ownership thereof (both as to working interest and royalty).
- If more than one lease of different ownership is dedicated to the well, have the interests of all owners been consolidated by communitization, unitization, force-pooling, etc?

Yes  No  If answer is "yes," type of consolidation \_\_\_\_\_

If answer is "no" list the owners and tract descriptions which have actually been consolidated (Use reverse side of this form if necessary) \_\_\_\_\_

No allowable will be assigned to the well until all interests have been consolidated (by communitization, unitization, forced-pooling, or otherwise) or until a non-standard unit, eliminating such interests, has been approved by the Commission.



CERTIFICATION

I hereby certify that the information contained herein is true and complete to the best of my knowledge and belief.

*[Signature]*

**J. J. Keller**  
Engineering Advisor

Phillips Petroleum Company

October 1, 1975

RECEIVED

I hereby certify that the well location shown on this plat was plotted from field notes of actual surveys made by me or under my supervision and that the same is correct to the best of my knowledge and belief.

OCT - 7 1975

U. S. GEOLOGICAL SURVEY  
ARTESIA, NEW MEXICO

DATE August 13, 1975

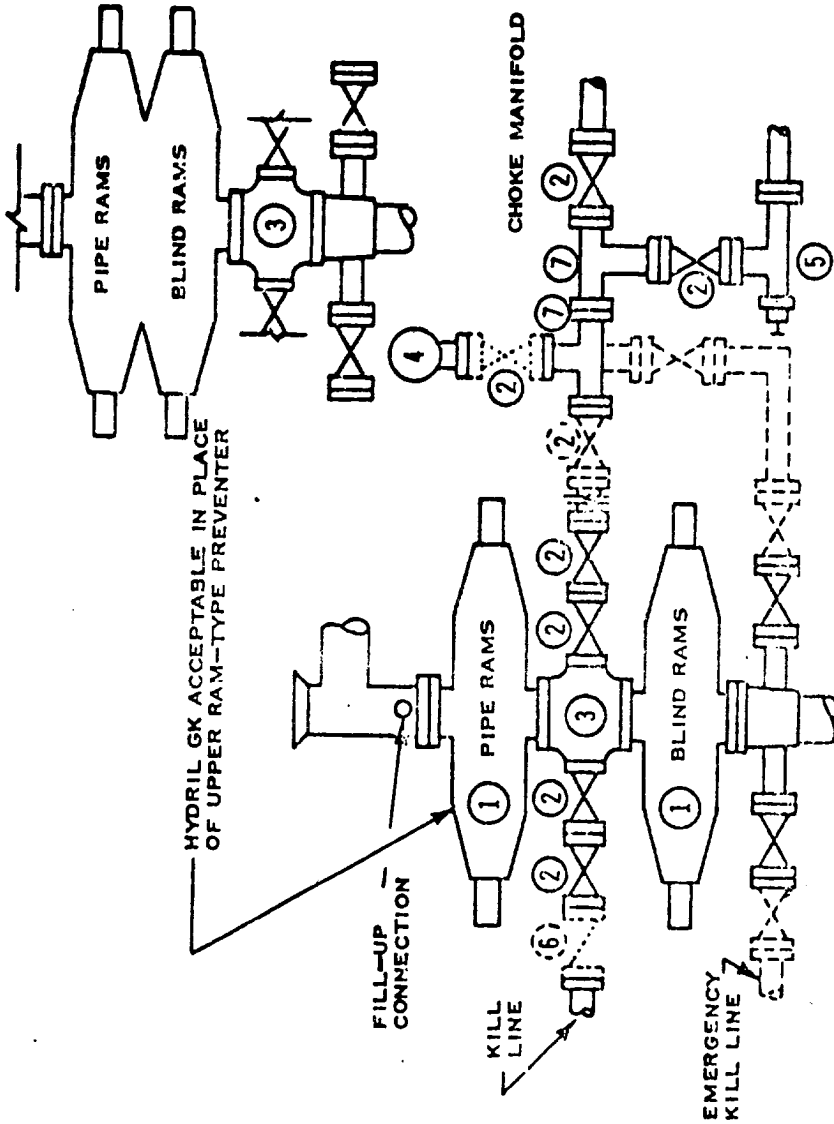
REQUIREMENTS MET BY PLAT 676

*[Signature]*

JOHN W. WEST

330 660 990 1320 1650 990 2310 2640 2000 1500 1000 500

DOUBLE PREVENTER OPTION



- ① SERIES 900 RAM-TYPE BOP
- ② 2" SERIES 900 VALVE
- ③ SERIES 900 DRILLING SPOOL
- ④ 2" MUD PRESSURE GAUGE
- ⑤ 2" SERIES 900 CHOKE
- ⑥ 2" SERIES 900 CHECK VALVE
- ⑦ 2" SERIES 900 STEEL TEE

NOTES:

1. 3000 PSI WP CLAMP HUBS MAY BE SUBSTITUTED FOR FLANGES
2. VALVES MAY BE EITHER HAND OR POWER OPERATED BUT, IF POWER OPERATED, THE VALVES FLANGED TO THE BOP RUN MUST BE CAPABLE OF BEING OPENED AND CLOSED MANUALLY OR CLOSE ON POWER FAILURE AND BE CAPABLE OF BEING OPENED MANUALLY

..... OPTIONAL EQUIPMENT

PHILLIPS PETROLEUM COMPANY

3000 PSI WORKING PRESSURE  
BLOWOUT PREVENTER HOOK-UP  
(SERIES 900 FLANGES OR BETTER)

REV 6/73

FIGURE NO. 7

RECEIVED

OCT 31 1975

U.S. CONSERVATION COMM.  
HOBBBS, R. M.

Phillips Petroleum Company

Odessa, Texas

In re: Proposed Mud Program - Tom D No. 1, 4100 San Andres Test  
Section 3, T-8-S, R-31-E, Chaves County, New Mexico

Surface Casing 400' of 8-5/8".

Spud with lime, bentonite and Flosal\* mixed to a high viscosity.

From Surface to 4,100' TD (4-1/2" Casing)    Good Samples Required from 3,000 to 4500' TD.

Drill out with fresh water and stay in steel pits. Prior to drilling red beds add 50 bbls. of crude oil and maintain native mud with following properties: Viscosity 32 to 34 sec. per quart out, Weight 10 lbs. per gal or less, Fluid loss no control, then maintain system with daily additions of Flosal, oil, and LCM as required. Open hole logs will be run at casing point, should hole conditions dictate reduce fluid loss with starch and adjust mud properties as needed.

THM: jc  
10-2-75

RECEIVED

OCT 31 1975

U.S. CONSERVATION COMM.  
BOSTON, MASS.

Phillips Petroleum Company - Tom D Well No. 1 = 660' FW & 1980' FN lines,  
Section 3, T-8-S, R-31-E, Chaves County, New Mexico

1. Existing roads on lease: There is existing dirt road in NW/4 Section 3  
(See sketch of area roads attached.)
2. Planned access roads: Commence at existing dirt road in NW/4 Section 3  
(North of well), construct approximately 200 feet (12' wide) road south to well site.
3. Location of Well No. 1 = 660' FW & 1980' FN lines, Section 3, T-8-S, R-31-E.
4. Lateral roads to area of well site: No paved or county roads in vicinity of proposed well site. There is a dirt road running E/W thru the NW/4 Section 3, approximately 200' north of well site. The proposed road to well site would commence at nearest point on the existing dirt road and run south to well site.
5. Tank battery and production facilities as required will be contained within drill site pad upon well completion.
6. Water supply will be purchased, and will be trucked to well site. Supply source has not been determined.
7. Gas for fuel used will be LPG furnished by commercial distributor. Supply source has not been determined to date. Fuel storage tank (s) will be located within cleared drill site area.
8. All waste disposal will be put in separate pits and covered.
9. No camps or airstrips will be located on lease.
10. Drill site location will be an area 300' E-W x 400' N-S, cleared and leveled with reserve pits dug in the northern 200' portion. Rig, racks, pumps, steel pits, water tanks, and portable office to be located on southern 200' portion of pad. The drill site proper (contained within the pad) will be permanently caliched in approximate area of 265' E-W x 200' N-S.
11. Restoration of surface: Dug pits within the cleared area will be back-filled and leveled. Caliched pad of the cleared area is a permanent type emplacement.
12. This land use plan is essentially the same as that used on other wells of like depth in Chaves and Lea Counties.
13. New road construction and well site are on Federal lease w/Federal surface rights.

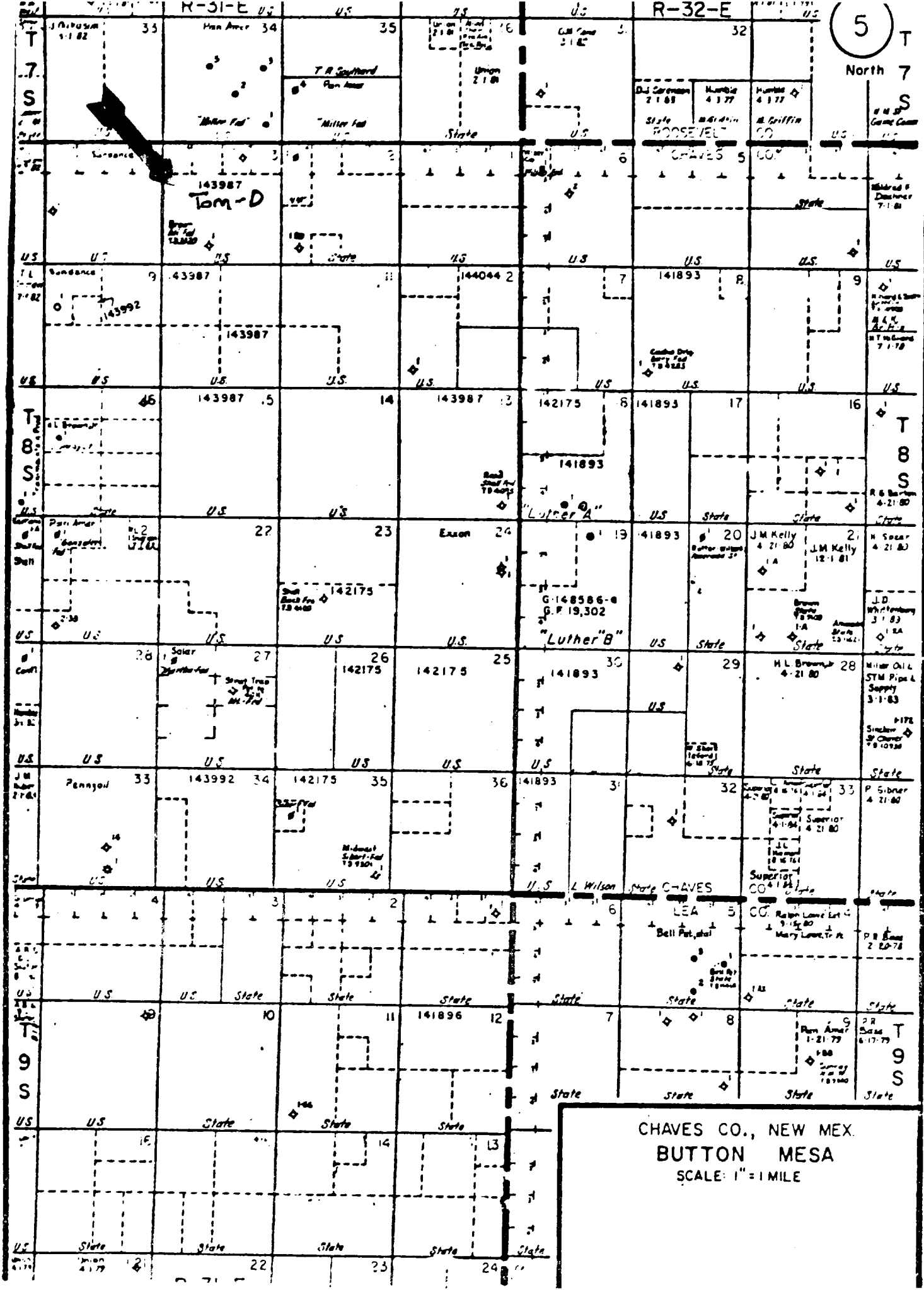
THM:jc  
10-2-75



RECEIVED

OCT 21 1975

U.S. CONSUMER PROTECT. COMM.  
WASH. D. C.



5  
North 7  
S

CHAVES CO., NEW MEX.  
BUTTON MESA  
SCALE: 1" = 1 MILE

Cleared Area Boundary  
(300' x 400')

Reserve Pit

Waste  
Disposal  
Pit

Cleared Area Boundary  
(265' x 200')

Mud Tanks

Mud  
Pumps

Rig

Pipe  
Racks

Water  
Storage Area

Portable  
Office

Cleared Area Boundary (300' x 400')

PHILLIPS PETROLEUM COMPANY

BARTLESVILLE, OKLAHOMA

DEVELOPMENT PLAN FOR SURFACE USE  
TOM-D #1 - Section 3, T-3-S, R-31-E, Chaves County, New Mexico  
Well Site - Location and Rig Service Lay-out

DRAWN  
CHECKED

LLF

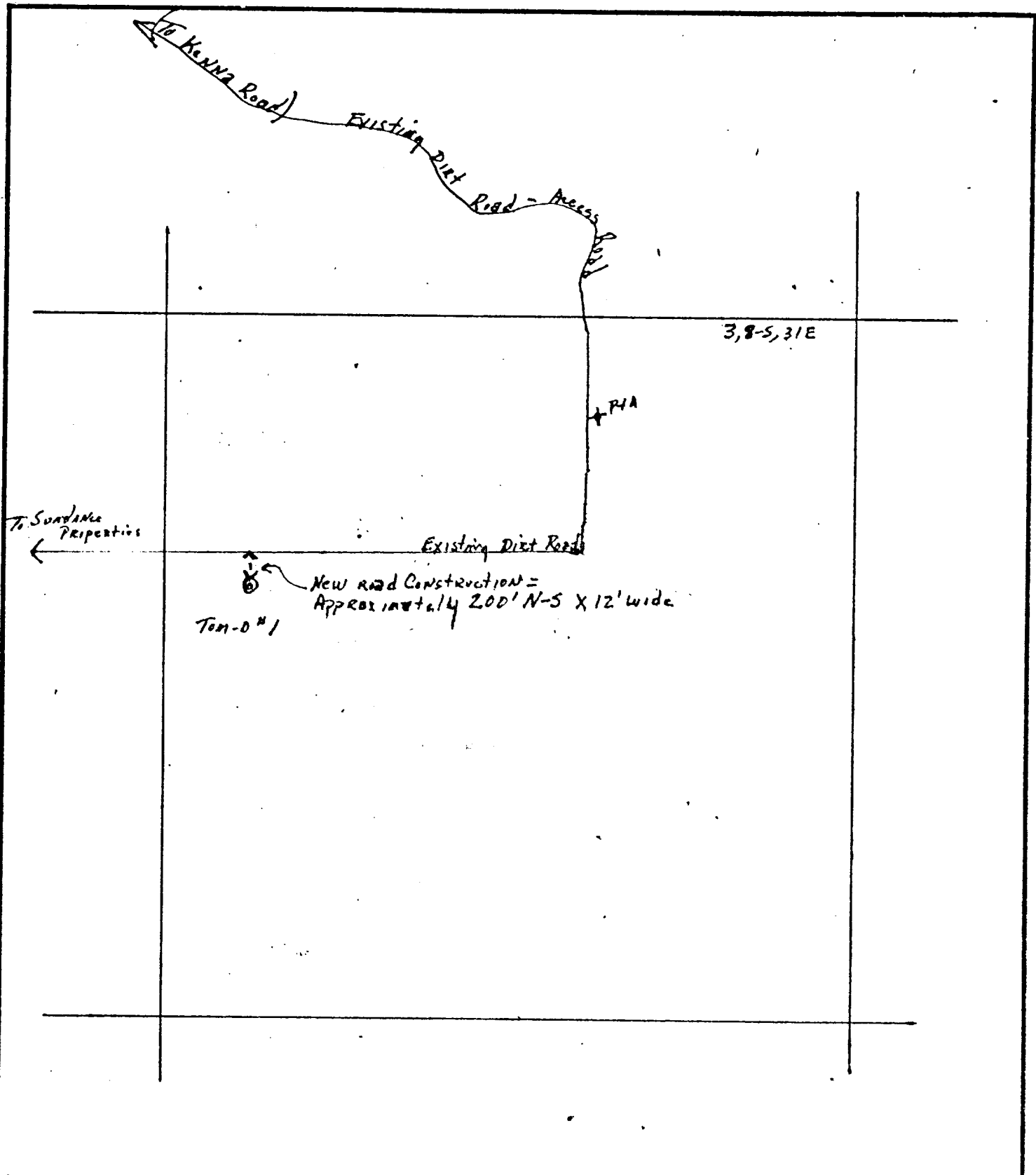
APP. NO.

DWG. NO. 2

RECEIVED

OCT 31 1975

CALIFORNIA CONSERVATION COMM.  
HOBBES, G. M.



PHILLIPS PETROLEUM COMPANY

BARTLESVILLE, OKLAHOMA

TCM-D Well No. 1 = 1980' FN & 660' FW lines, Section 3,  
 T-8-S, R-31-E, Chaves County, New Mexico

Existing and proposed access roads for drilling operation

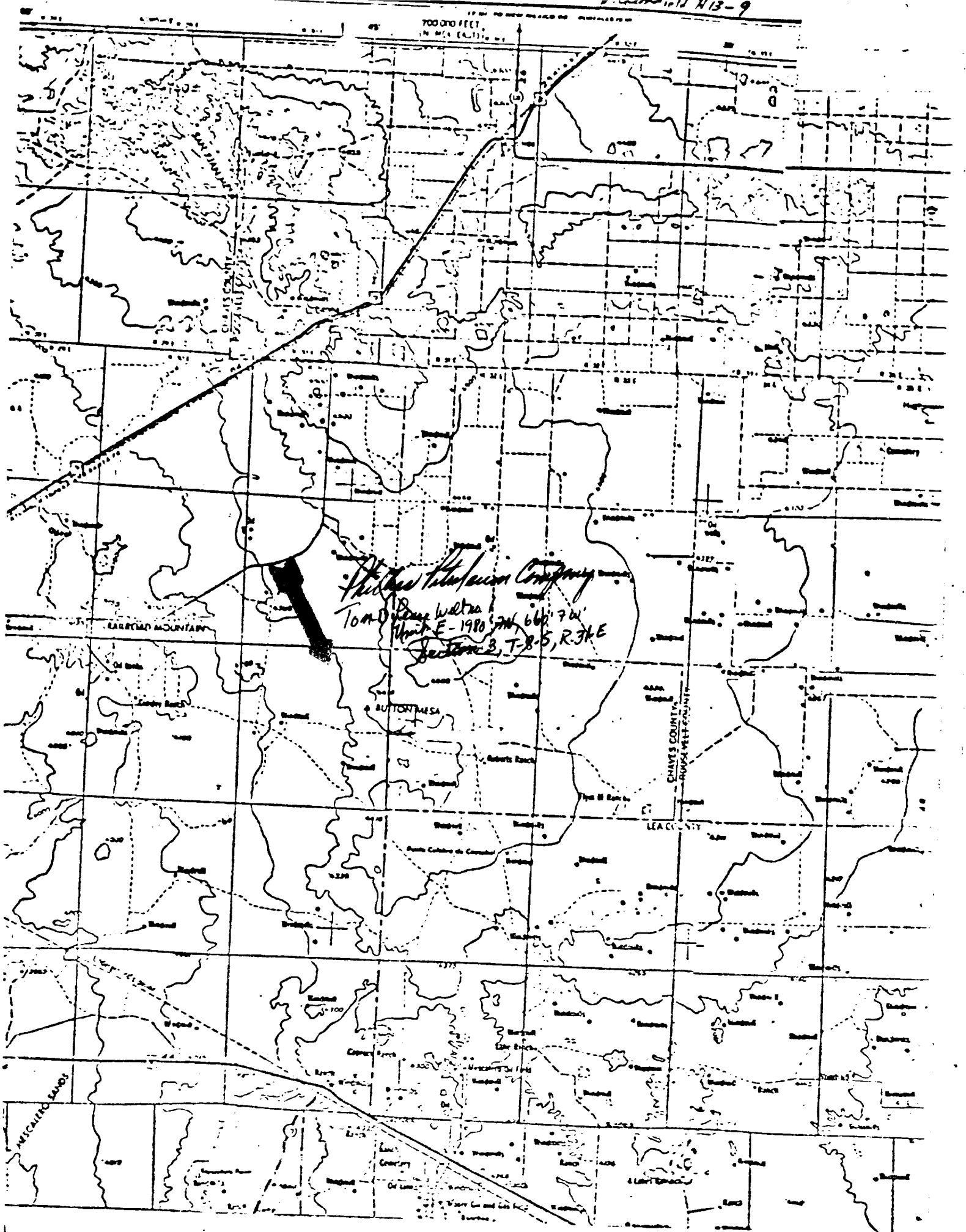
			DRAWN <i>hm</i>		AFE. NO.	DWG. NO.
			CHECKED			
REVISION	BY	DATE	APPROVED		SCALE	SHEET NO.

RECEIVED

OCT 31 1975

U.S. CONGRESS  
HOBBS, N. H.

700 000 FEET  
IN METERS (A.U.T.)



*Phillips Petroleum Company*  
 Tom D. Jones Walter  
 Mont E-1980 7W, 660 7W  
 Section 3, T-8-S, R-3-E

SARICHO MOUNTAIN

BUTTE MESA

CHAVEZ COUNTY  
MUSKIEE COUNTY

LEA COUNTY

MISCALCO LANDS

RECEIVED

OCT 31 1975

OIL CONSERVATION COMM.  
BOBBS, T. M.

