

Submit 3 Copies to Appropriate District Office

State of New Mexico Energy, Minerals and Natural Resources Department

3 NMOCD (Hobbs) 1 File Form C-103 Revised 1-1-89

DISTRICT I P.O. Box 1980, Hobbs, NM 88240

DISTRICT II P.O. Drawer DD, Artesia, NM 88210

DISTRICT III 1000 Rio Brazos Rd., Aztec, NM 87410

OIL CONSERVATION DIVISION P.O. Box 2088 Santa Fe, New Mexico 87504-2088

WELL API NO. 30-005-20740
3. Indicate Type of Lease STATE [X] FEE []
6. State Oil & Gas Lease No. OG-1062
7. Lease Name or Unit Agreement Name KM Chaveroo SA Unit
8. Well No. 114
9. Pool name or Wildcat * Chaveroo (San Andres)
10. Elevation (Show whether DF, RKB, RT, GR, etc.)

SUNDRY NOTICES AND REPORTS ON WELLS (DO NOT USE THIS FORM FOR PROPOSALS TO DRILL OR TO DEEPEN OR PLUG BACK TO A DIFFERENT RESERVOIR. USE "APPLICATION FOR PERMIT" (FORM C-101) FOR SUCH PROPOSALS.)
1. Type of Well: OIL WELL [X] GAS WELL [] OTHER []
2. Name of Operator Dugan Production Corp.
3. Address of Operator P.O. Box 420, Farmington, NM 87499
4. Well Location Unit Letter C : 1330 Feet From The West Line and 1310 Feet From The North Line
Section 2 Township 8S Range 33E NMPM Chaves County

11. Check Appropriate Box to Indicate Nature of Notice, Report, or Other Data
NOTICE OF INTENTION TO: PERFORM REMEDIAL WORK [] PLUG AND ABANDON [X] TEMPORARILY ABANDON [] CHANGE PLANS [] PULL OR ALTER CASING [] OTHER []
SUBSEQUENT REPORT OF: REMEDIAL WORK [] ALTERING CASING [] COMMENCE DRILLING OPNS. [] PLUG AND ABANDONMENT [] CASING TEST AND CEMENT JOB [] OTHER []

12. Describe Proposed or Completed Operations (Clearly state all pertinent details, and give pertinent dates, including estimated date of starting any proposed work) SEE RULE 1103.
1. RU Completion Unit. Release Baker Model AD-1 Packer and TOH.
2. PU 4 1/2" CIBP on 2 3/8" tubing and TIH. Set CIBP at 4100'. TOH and LD CIBP setting assembly.
3. TIH with tubing open ended and tag CIBP. Circulate 4 1/2" casing with 65 barrels mud laden fluid. Spot 10 sx Class "C" Cement Plug from 4050' to 4100'
4. Spot 20 sx Class "C" Cement Plug from 1862' to 1962'
5. Spot 10 sx Class "C" Cement Plug from 50' to surface.
6. Weld on Dry Hole Marker.

I hereby certify that the information above is true and complete to the best of my knowledge and belief.
SIGNATURE [Signature] TITLE Petroleum Engineer DATE 3/25/97
TYPE OR PRINT NAME Byron H. Greaves TELEPHONE NO. 915/686-7657

(This space for State Use) ORIGINAL SIGNATURE [Signature] TITLE [] DATE []
APPROVED BY [] TITLE []
CONDITIONS OF APPROVAL, IF ANY:

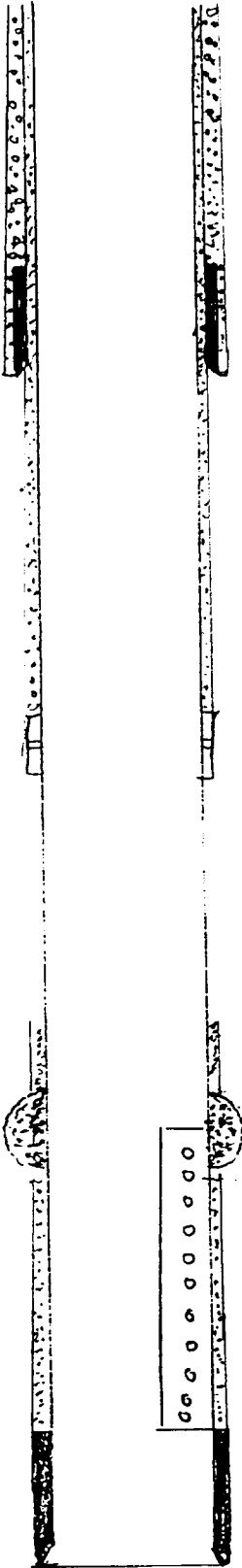
MAR 27 1997

42

[Signature]

OPERATOR DUGAN PRODUCTION CORP
LEASE KM CHARCOON SA UNIT WELL NO. 114

CURRENT WELLBORE DIAGRAM



Surface Casing 8 5/8", 24 lb, K-55 Casing set at 410'.
Cemented w 400 sx CLASS H, 2% CaCl₂,
& 1/4 lb Celluloflakes. Circulated approx 100sx
to surface.

Stage Collar DV Stage collar set at 1911'.
Opened DV tool and cemented with
480 sx HALCO-LIGHT. Circulated
30 sx cement to surface.

TOP of Cement - 3941' (after block squeeze) CBL

Block Squeeze Perf squeeze holes at 4156 & 4185'.
Cement pack with 100 sx Class C Cement
TOP of Cement - 4218' (before block squeeze) CBL

Perforated Interval 28 Selective Shots at 4185, 87, 91, 97,
4201, 07, 13, 15, 22, 23, 29, 32, 59, 87, 90, 92
94, 4303, 11, 13, 21, 25, 29, 34, 39, 44, 49, 53

Production Casing 4 1/2", 10.5 lb, K-55 Casing set at 4499'.
Cemented w 250 sx Class H Cement

OPERATOR DUGAN PRODUCTION CORP
LEASE KM CHAUCROO SA UNIT WELL NO. 114

PROPOSED PLUG & ABANDONMENT
STATUS

SPOT 10 SX Class C Cement Plug at
SURFACE

Surface Casing 8 5/8", 24 lb, K-55 Casing set at 410'
Cemented w 400 SX Class H, 2% CaCl₂,
& 1/4 lb Celluloses. Circulated approx 100 SX
to surface.

SPOT 20 SX Class H Cement Plug from
1862' to 1962'

Stage Collar DV Stage collar set at 1911'
Opened DV tool and cemented with
480 SX HALSCO-LIGHT. Circulated
30 SX Cement to surface.

CAST IRON BRIDGE PLUG TO RIS SET at 4100'
AND CAPPED WITH 10' CEMENT PLUG

TOP of Cement - 3941' (after block squeeze) CBL

Block Squeeze Perf Squeeze holes at 4156 & 4185.
Cement each with 100 SX Class C Cement
TOP of Cement - 4218' (before block squeeze) CBL

Perforated Interval 28 Selectfire Shots at 4185, 87, 91, 97,
4201, 07, 13, 15, 22, 23, 29, 32, 59, 87, 90, 92
94, 4303, 11, 13, 21, 25, 29, 34, 39, 44, 49, 53

Production Casing 4 1/2", 10.5 lb, K-55 Casing set at 4499'
Cemented w 250 SX Class H Cement

