

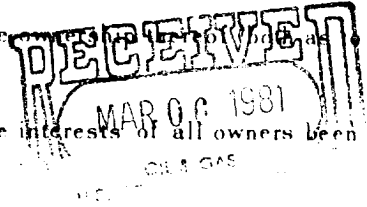
MEXICO OIL CONSERVATION COMMISSION
WELL LOCATION AND ACREAGE DEDICATION PLAT

Form C-102
Supersedes C-128
Effective 1-1-65

All distances must be from the outer boundaries of the Section

Operator C. & C. Operating Corp.		Lease W. R. Means		Well No. 4
Unit Letter C	Section 28	Township 14 South	Range 30 East	County Chaves
Actual Footage Location of Well: 630 feet from the North line and 2310 feet from the West line				
Ground Level Elev. 3880.0	Producing Formation QUEEN	Pool UNDES. VEST RANCH QUEEN (ASSOC.)	Dedicated Acreage: 40 Acres	

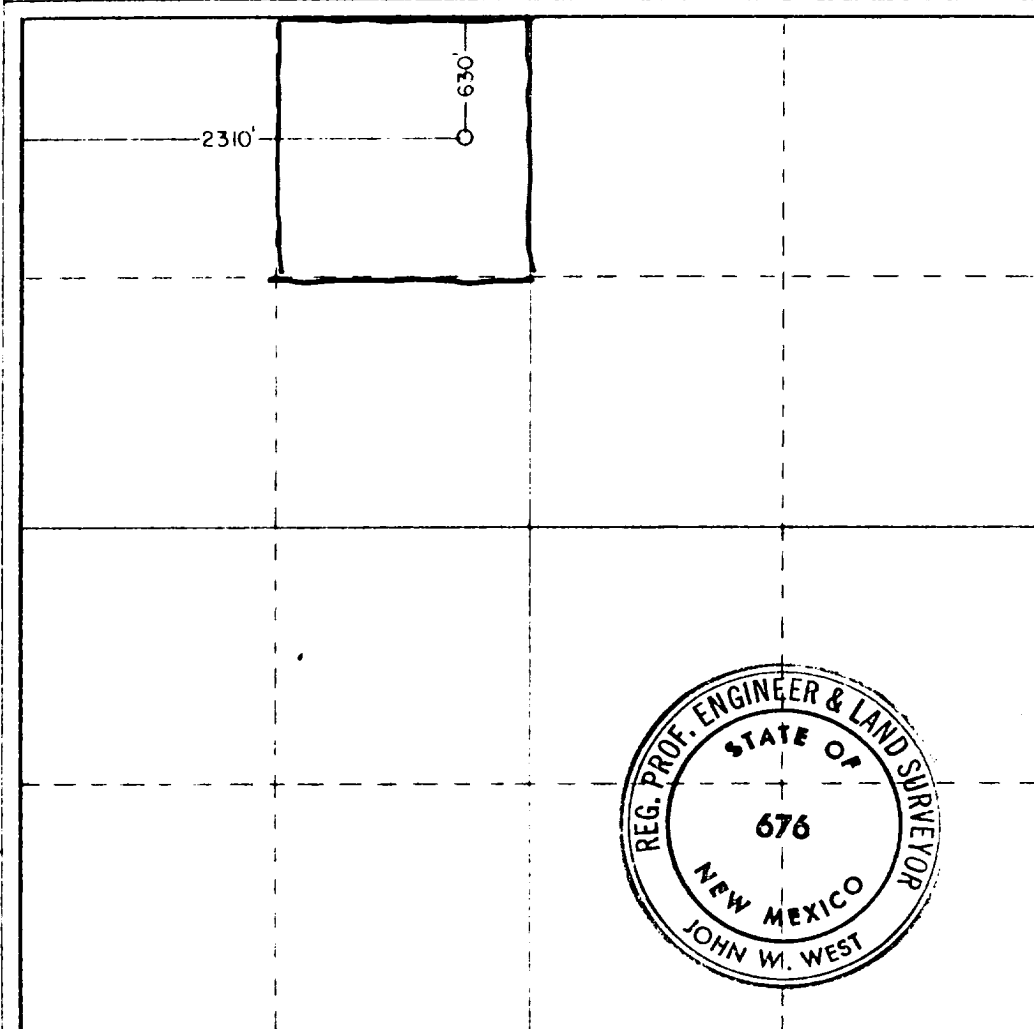
- Outline the acreage dedicated to the subject well by colored pencil or hachure marks on the plat below.
- If more than one lease is dedicated to the well, outline each and identify the owner (as to working interest and royalty).
- If more than one lease of different ownership is dedicated to the well, have the interests of all owners been consolidated by communitization, unitization, force-pooling, etc?



Yes No If answer is "yes," type of consolidation _____

If answer is "no," list the owners and tract descriptions which have actually been consolidated. (Use reverse side of this form if necessary.) _____

No allowable will be assigned to the well until all interests have been consolidated (by communitization, unitization, forced-pooling, or otherwise) or until a non-standard unit, eliminating such interests, has been approved by the Commission.



CERTIFICATION

I hereby certify that the information contained herein is true and complete to the best of my knowledge and belief

Name: *Arthur R. Brown*
Arthur R. Brown

Position: Agent for
Company: C AND C OPERATING CORP.

Date: MARCH 2, 1981

I hereby certify that the well location shown on this plat was plotted from field notes of actual surveys made by me or under my supervision, and that the same is true and correct to the best of my knowledge and belief.

Date Surveyed: 2-26-81

Registered Professional Engineer in the State of New Mexico

John W. West

Certificate No. JOHN W. WEST 676
PATRICK A. ROMERO 6868
Ronald J. Eidson 3239

