

NEW MEXICO OIL CONSERVATION COMMISSION
WELL LOCATION AND ACREAGE DEDICATION PLAT

Form C-1
Supersedes C-128
Effective 1-1-65

All distances must be from the outer boundaries of the Section

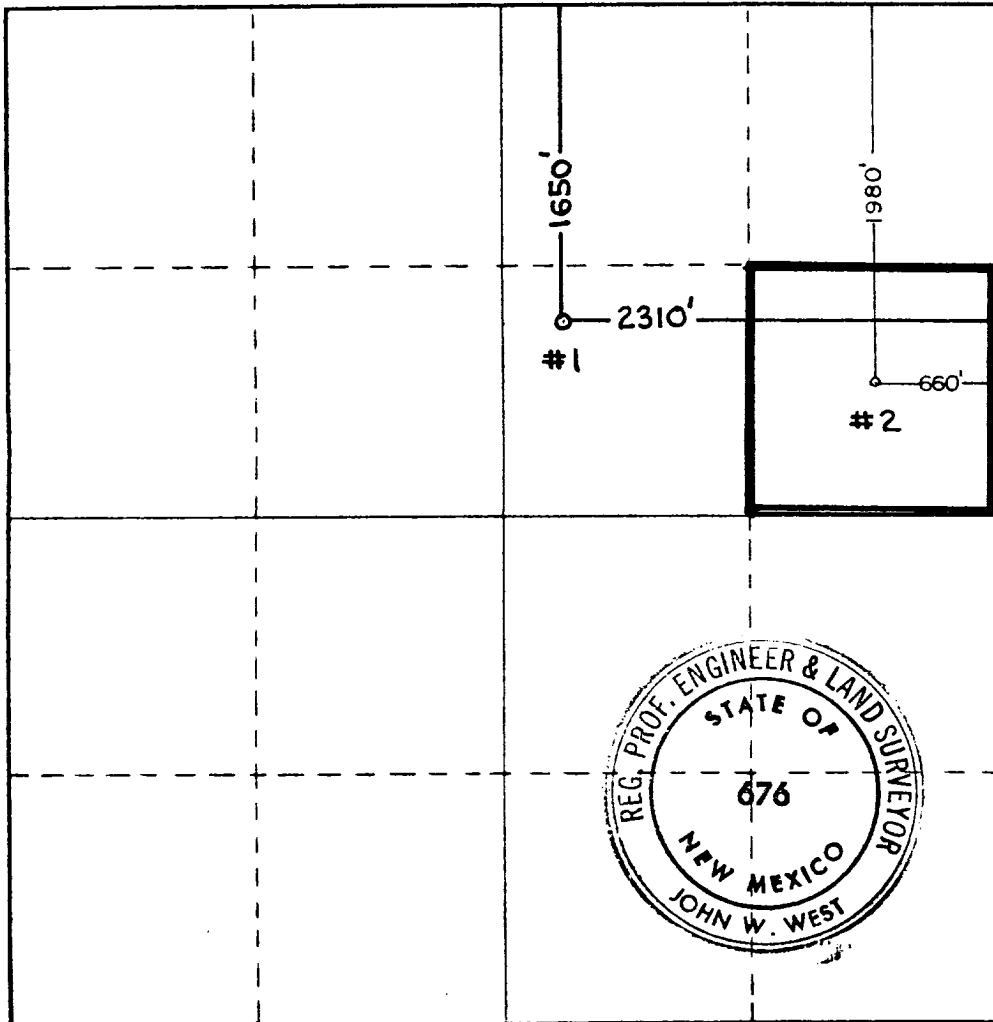
Operator ADAMS EXPLORATION, INC.		Lease HOOPER		Well No. 2
Unit Letter H	Section 10	Township 8 SOUTH	Range 32 EAST	County CHAVES
Actual Footage Location of Well: 660 feet from the EAST line and 1980 feet from the NORTH line				
Ground Level Elev. 4462.4	Producing Formation San Andres	Pool Chaveroo San Andres	Dedicated Acreage: 40 Acres	

- Outline the acreage dedicated to the subject well by colored pencil or hachure marks on the plat below.
- If more than one lease is dedicated to the well, outline each and identify the ownership thereof (both as to working interest and royalty).
- If more than one lease of different ownership is dedicated to the well, have the interests of all owners been consolidated by communitization, unitization, force-pooling, etc?

Yes No If answer is "yes," type of consolidation _____

If answer is "no," list the owners and tract descriptions which have actually been consolidated. (Use reverse side of this form if necessary.) _____

No allowable will be assigned to the well until all interests have been consolidated (by communitization, unitization, forced-pooling, or otherwise) or until a non-standard unit, eliminating such interests, has been approved by the Commission.



CERTIFICATION

I hereby certify that the information contained herein is true and complete to the best of my knowledge and belief.

Steve A Douglas

Name
Steve A. Douglas
Position
Division Engineer
Company
Adams Exploration Co.

Date
10-15-81

I hereby certify that the well location shown on this plat was plotted from field notes of actual surveys made by me or under my supervision, and that the same is true and correct to the best of my knowledge and belief.

Date Surveyed
7-9-81

Registered Professional Engineer and/or Land Surveyor

John W. West
Certificate No. **JOHN W. WEST 676**
PATRICK A. ROMERO 6663
Ronald J. Eidson 3239

