

30-005-20862

NO. OF COPIES RECEIVED	
DISTRIBUTION	
SANTA FE	
FILE	
U.S.G.S.	
LAND OFFICE	
OPERATOR	

NEW MEXICO OIL CONSERVATION COMMISSION

Form O-101
Revised 1-1-65

5A. Indicate Type of Lease
STATE FEE

5. State Oil & Gas Lease No.
LG-253

APPLICATION FOR PERMIT TO DRILL, DEEPEN, OR PLUG BACK

1a. Type of Work
b. Type of Well DRILL DEEPEN PLUG BACK
OIL WELL GAS WELL OTHER SINGLE ZONE MULTIPLE ZONE

7. Tract Agreement Name

2. Name of Operator
Armstrong Energy Corporation

8. Firm or Lease Name
Galaxy State

3. Address of Operator
P.O. Box 1973, Roswell, New Mexico 88201

9. Well No.
1

4. Location of Well UNIT LETTER **0** LOCATED **660** FEET FROM THE **south** LINE
AND **1980** FEET FROM THE **east** LINE OF SEC. **36** TWP. **6 S** RGE. **30 E** NMPM

10. Field and Pool, or Wildcat
Wildcat

11. County
Chaves

18. Proposed Depth **7,650'**
19A. Formation **Cisco**
20. Rotary or C.R.
Rotary

21. Elevations (Show whether DP, RI, etc.) **4292 GL**
21A. Kind & Status Plug. Bond **\$7,500 One well**
21B. Drilling Contractor **Unknown**

22. Approx. Date Work will start
May 15, 1982

PROPOSED CASING AND CEMENT PROGRAM

SIZE OF HOLE	SIZE OF CASING	WEIGHT PER FOOT	SETTING DEPTH	SACKS OF CEMENT	EST. TOP
17 1/2"	13-3/8"	48#	275	290	circ. to surface
12 1/4"	8-5/8"	24#	3,000	1,350	Circ. to surface
7-7/8"	5-1/2"	15 1/2#	7,650	930	4,650'

Mud Program - 0-275' - fresh water with 8.5 to 9.0# mud
 275'-3,000' - brine water with 10.0# mud
 3,000'-7,650' - salt gel with 10.0# mud

BOP Program - 5,000# BOP stacked consisting of 2 sets of rams, 1 pipe, 1 blind and annular preventer

APPROVAL VALID FOR 180 DAYS
 PERMIT EXPIRES 10/26/82
 UNLESS DRILLING UNDERWAY

IN ABOVE SPACE DESCRIBE PROPOSED PROGRAM; IF PROPOSAL IS TO DEEPEN OR PLUG BACK, GIVE DATA ON PRESENT PRODUCTIVE ZONE AND PROPOSED NEW PRODUCTIVE ZONE. GIVE BLOWOUT PREVENTER PROGRAM, IF ANY.

I hereby certify that the information above is true and complete to the best of my knowledge and belief.

Signed Kobert Adams Title President Date April 14, 1982

(This space for State Use)
 ORIGINAL SIGNED BY JERRY SEXTON
 APPROVED BY JERRY SEXTON TITLE _____ DATE APR 26 1982

CONDITIONS OF APPROVAL, IF ANY.

RECEIVED

APR 17 1982

C.C.D.
HOSES OFFICE

OIL CONSERVATION DIVISION

STATE OF NEW MEXICO
ENERGY AND MINERALS DEPARTMENT

P. O. BOX 2088
SANTA FE, NEW MEXICO 87501

Form C-102
Revised 10-1-78

All distances must be from the outer boundaries of the Section.

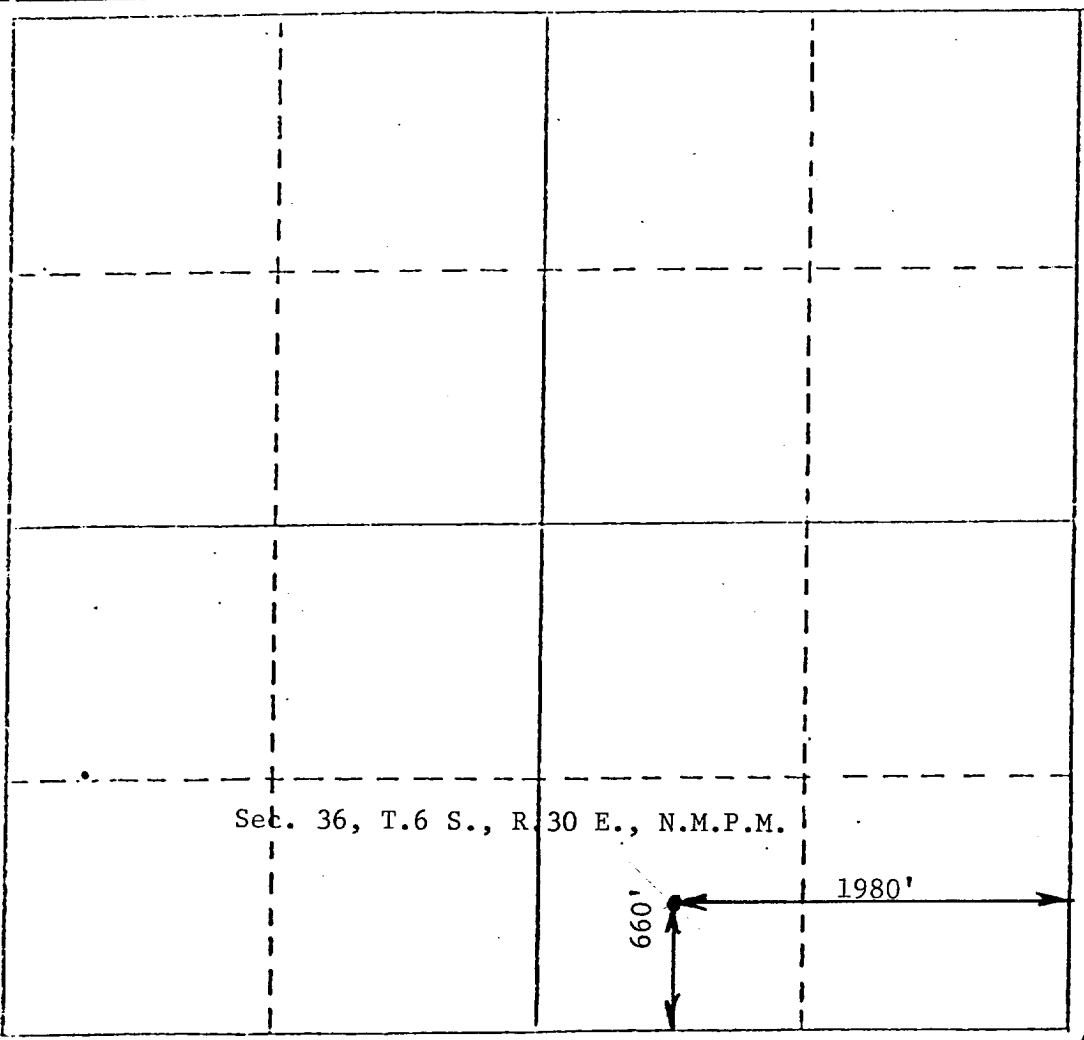
Operator Armstrong Energy		Lease Galaxy State			Well No. 1
Unit Letter 0	Section 36	Township 6 S.	Range 30 E.	County Roosevelt	
Actual Postage Location of Well:					
660 feet from the South line and		1980 feet from the East line			
Ground Level Elev. 4292	Producing Formation Cisco	Pool Wildcat	Dedicated Acreage: 40 Acres		

1. Outline the acreage dedicated to the subject well by colored pencil or hachure marks on the plat below.
2. If more than one lease is dedicated to the well, outline each and identify the ownership thereof (both as to working interest and royalty).
3. If more than one lease of different ownership is dedicated to the well, have the interests of all owners been consolidated by communitization, unitization, force-pooling, etc?

Yes No If answer is "yes," type of consolidation _____

If answer is "no," list the owners and tract descriptions which have actually been consolidated. (Use reverse side of this form if necessary.) _____

No allowable will be assigned to the well until all interests have been consolidated (by communitization, unitization, forced-pooling, or otherwise) or until a non-standard unit, eliminating such interests, has been approved by the Division.



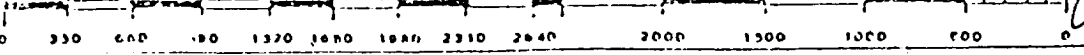
CERTIFICATION

I hereby certify that the information contained herein is true and complete to the best of my knowledge and belief.

Robert G. Armstrong
Name
Robert G. Armstrong
Position
President
Company
Armstrong Energy Corp.
Date
April 16, 1982

I hereby certify that the well location shown on this plat was plotted from field notes of actual surveys made by me or under my supervision, and that the same is true and correct to the best of my knowledge and belief.

JOHN D. JAQUES
Date Surveyed
April 6, 1982
Registered Professional Engineer and/or Geologist
John D. Jaques, P.E. & L.S.
Certificate No. **6290**



RECEIVED

APR 17 1982

S.S.D.
HIGHER SERVICE

Armstrong
ENERGY CORPORATION

510 SECURITY NATIONAL BANK BUILDING

P. O. Box 1973
ROSWELL, NEW MEXICO 88201
505/623-8726

April 16, 1982

Oil Conservation Division
P.O. Box 2088
Santa Fe, New Mexico 87501

Re: Plugging Bond
SW/4SE/4 Section 36,
Township 6 South, Range
30 East, N.M.P.M.

Dear Sir:

Enclosed in connection with a well which we propose to drill at the captioned location, is a One Well Plugging Bond in the amount of \$7,500.00. Form C-101 is being sent to the appropriate District office.

Please notify me when this bond is approved.

Sincerely,

Armstrong Energy Corporation

By: _____
Robert G. Armstrong, President

RGA/pp

Enclosure

✓ cc: Oil Conservation Division
District I

Lynx Petroleum Consultants, Inc.

RECEIVED
APR 17 1982
O.C.D.
HOBBS OFFICE