

**NEW MEXICO OIL CONSERVATION COMMISSION
WELL LOCATION AND ACREAGE DEDICATION PLAT**

Form C-102
Supersedes C-128
Effective 1-1-65

All distances must be from the corner boundaries of the Section.

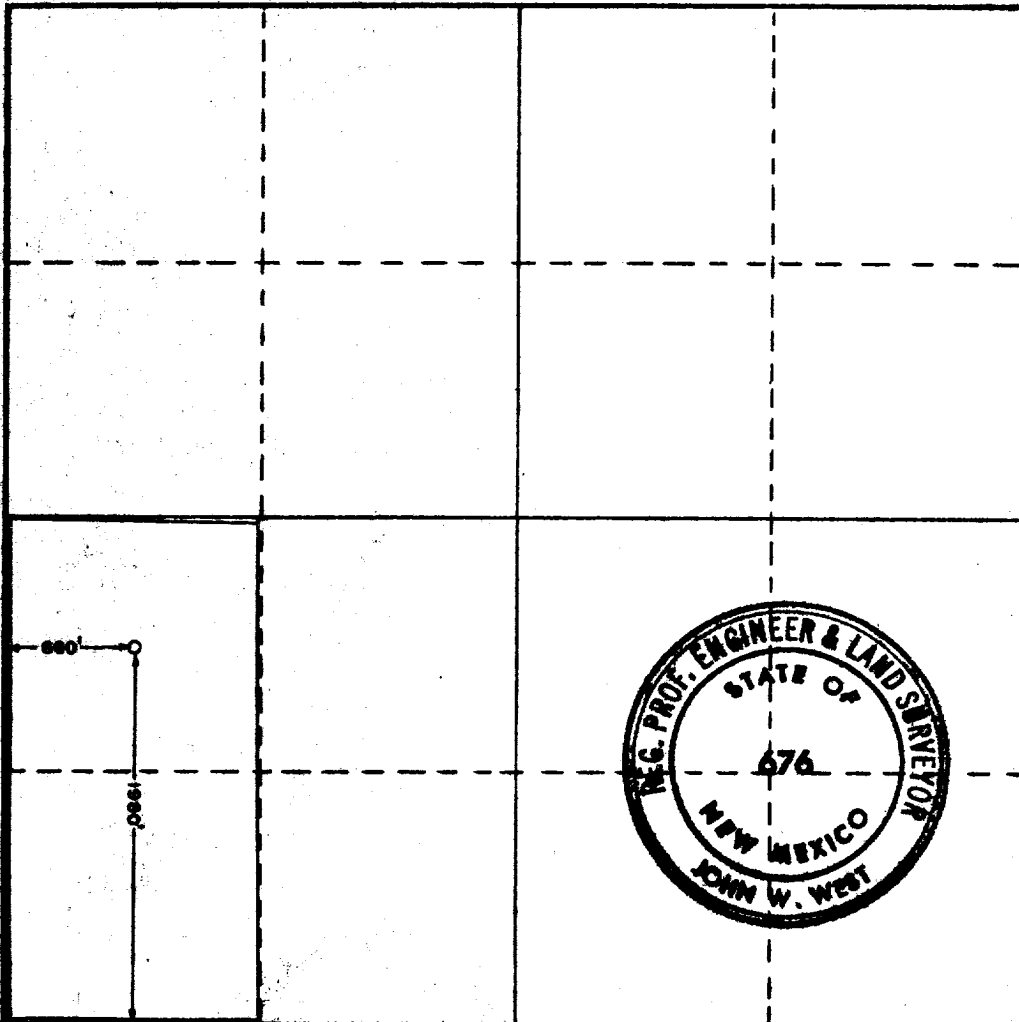
Operator COASTAL STATES GAS PRODUCING CO.			Lease MAY 13 STATE 6PM '69		Well No. 3
Unit Letter L	Section 6	Township 14 SOUTH	Range 35 EAST	County LEA	
Actual Well Location of Well: 1980 feet from the SOUTH line and 660 feet from the WEST line					
Ground Level Elev. 1980	Producing Formation Upper Perm		Pool Bona	Dedicated Acreage 80 Acres	

1. Outline the acreage dedicated to the subject well by colored pencil or hatchure marks on the plat below.
2. If more than one lease is dedicated to the well, outline each and identify the ownership thereof (both as to working interest and royalty).
3. If more than one lease of different ownership is dedicated to the well, have the interests of all owners been consolidated by communitization, unitization, force-pooling, etc?

☐ Yes ☐ No If answer is "yes," type of consolidation _____

If answer is "no," list the owners and tract descriptions which have actually been consolidated. (Use reverse side of this form if necessary.) _____

No allowable will be assigned to the well until all interests have been consolidated (by communitization, unitization, forced-pooling, or otherwise) or until a non-standard unit, eliminating such interests, has been approved by the Commission.



CERTIFICATION

I hereby certify that the information contained herein is true and complete to the best of my knowledge and belief.

Name *Donna Holkes*
 Position _____
 Agent _____
 Company _____
Coastal States Gas Prod. Co.
 Date *May 12, 1969*

I hereby certify that the well location shown on this plat was plotted from field notes of actual surveys made by me or under my supervision, and that the same is true and correct to the best of my knowledge and belief.

Date Surveyed
MAY 12, 1969
 Registered Professional Engineer and/or Land Surveyor
John W West
 Certificate No. **676**

