



U retrosum information.

RE-ISSUED COMPLETION

© Copyrighted Reproduction Prohibited

COUNTY LEA FIELD Baum STATE NM
 OPR MARALO, INC. API 30-025-28219
 NO 3 LEASE Samantha "7" State MAP
Sec 7, T14S, R33E CO-ORD
1980 FSL, 660 FEL of Sec 8-1-17 NM
20 mi SE/Caprock SPD 5-25-83 CMP 7-15-83

CSC

13 3/8-399-400 sx
 8 5/8-4100-1640 sx
 5 1/2-9990-1125 sx
 2 3/8-9841

WELL CLASS: INIT D FIN DO LSE. CODE			
FORMATION	DATUM	FORMATION	DATUM
TD 9990 (PSLV)		PBD	

IP (Upper Pennsylvanian) Perfs 9898-9921 P 160 BOPD + 85 BW.
 Pot based on 24 hr test. GOR 1500; gty 44.6

CONTR Moranco #6 OPRS ELEV 4259 GL, *4276 KB sub-s 15

F.R. 5-23-83
 PD 10,150 RT (Pennsylvanian)
 6-6-83 Drlg 6652
 6-13-83 Drlg 9426
 6-21-83 TD 9990; *SI
 *No Cores or DST's
 8-1-83 TD 9990; Complete
 Perf (Upper Pennsylvanian) 9898-9912, 9918-9921
 Acid (9898-9921) 3700 gals
 LOG TOPS: Yates 2612, Grayburg 3734, Glorieta
 5523, Tubb 6934, Wolfcamp 9050, *Bough "A"
 9831, *Bough "B" 9864
 LOGS RUN: CNL, LDT, GRL

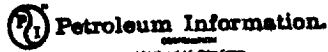
*Denotes changes & additions

8-6-83

COMPLETION ISSUED

8-1-17 NM

TO 30-025-70312-83



© Copyrighted Reproduction Prohibited

COUNTY LEA FIELD Baum STATE NM
 OPR MARALO, INC. API 30-025-28219
 NO 3 LEASE Samantha "7" State MAP
Sec 7, T14S, R33E CO-ORD
1980 FSL, 660 FEL of Sec 8-1-17 NM
20 mi SE/Caprock SPD 5-25-83 CMP 7-15-83

CSC	WELL CLASS: INIT D FIN DO LSE. CODE			
	FORMATION	DATUM	FORMATION	DATUM
13 3/8-399-400 sx				
8 5/8-4100-1640 sx				
5 1/2-9990-1125 sx				
2 3/8-9841				
	TD 9990 (PSLV)		PBD	

IP (Upper Pennsylvanian) Perfs 9898-9921 P 160 BOPD + 85 BW.
 Pot based on 24 hr test. GOR 1500; gty 44.6

CONTR Moranco #6 OPRSELEV 4259 GL sub-s 15

6-6-83 Drlg 6652
 6-13-83 Drlg 9426
 6-21-83 TD 9990; "Tight"
 8-1-83 TD 9990; Complete
 Perf (Upper Pennsylvanian) 9898-9912, 9918-21
 Acid (9898-9921) 3700 gals
 LOG TOPS: Yates 2612, Grayburg 3734, Glorieta
 5523, Tubb 6934, Wolfcamp 9050
 LOGS RUN: CNL, LDT, GRL
 8-6-83 COMPLETION ISSUED

8-1-17 NM
 IC 30-025-70312-83

NEW MEXICO OIL CONSERVATION COMMISSION
WELL LOCATION AND ACREAGE DEDICATION PLAT

Form O-2
Supersedes C-228
Effective 1-1-65

All distances must be from the corner boundaries of the Section.

MARALO INC.

SAMANTHA 7

3

I

7

14 SOUTH

33 EAST

LEA

1980

feet from the

SOUTH

660

feet from the

EAST

160

4259.2

Pennsylvanian

Baum-Upper Pennsylvanian

160

Acres

1. Outline the acreage dedicated to the subject well by colored pencil or hachure marks on the plat below.
2. If more than one lease is dedicated to the well, outline each and identify the ownership thereof (both as to working interest and royalty).
3. If more than one lease of different ownership is dedicated to the well, have the interests of all owners been consolidated by communitization, unitization, force-pooling etc?

Yes No If answer is "yes," type of consolidation _____

If answer is "no," list the owners and tract descriptions which have actually been consolidated. (Use reverse side of this form if necessary.) _____

No allowable will be assigned to the well until all interests have been consolidated (by communitization, unitization, force-pooling, or otherwise) or until a non-standard unit, eliminating such interests, has been approved by the Commission.

CERTIFICATION

I hereby certify that the information contained herein is true and complete to the best of my knowledge and belief.

Brenda Coffman

Name

Brenda Coffman, Agent

Position

Maralo, Inc.

Company

Date

7-28-83

I hereby certify that the well location shown on this plat was plotted from field notes of actual surveys made by me or under my supervision, and that the same is true and correct to the best of my knowledge and belief.

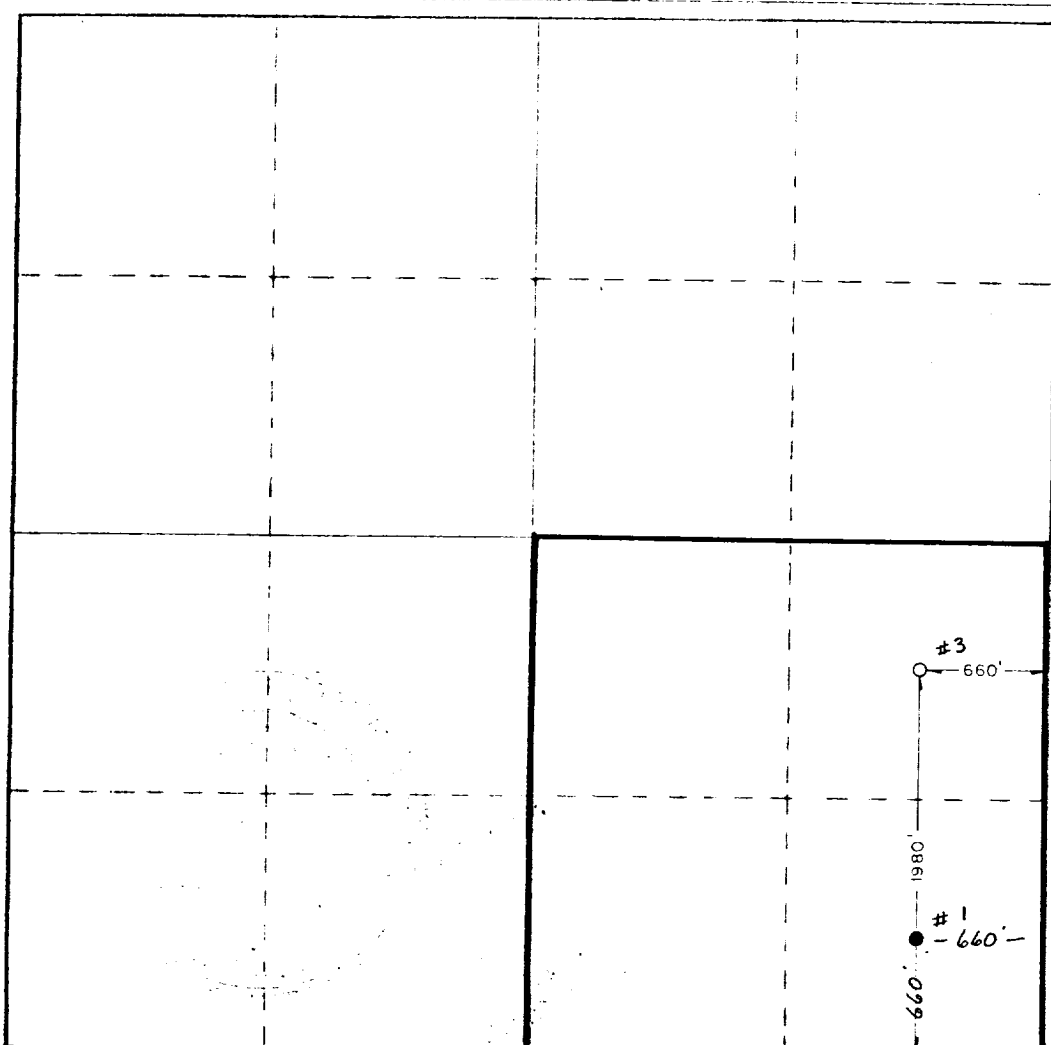
Date Surveyed

MAY 10, 1983

Registered Professional Engineer
and Land Surveyor

Certificate No

JOHN W. WEST N.M.#676



RECEIVED

JUL 29 1983

O.C.D.
HOBBS OFFICE