

STATE OF NEW MEXICO  
ENERGY AND MINERALS DEPARTMENT

OIL CONSERVATION DIVISION  
P. O. BOX 2088  
SANTA FE, NEW MEXICO 87501

Form C-101  
Revised 10-1-78

NO. OF COPIES RECEIVED	
DISTRIBUTION	
SANTA FE	
FILE	
U.S.G.S.	
LAND OFFICE	
OPERATOR	

5A. Indicate Type of Lease  
STATE ☐ PEE ☒  
5. State Oil & Gas Lease No.  
N.A.

APPLICATION FOR PERMIT TO DRILL, DEEPEN, OR PLUG BACK

a. Type of Work  
DRILL ☒ DEEPEN ☐ PLUG BACK ☐  
b. Type of Well  
OIL WELL ☒ GAS WELL ☐ OTHER ☐  
c. Name of Operator  
Western Reserves Oil Co.  
d. Address of Operator  
P. O. Box 993 Midland, Texas 79702  
e. Location of well  
UNIT LETTER H LOCATED 1650' FEET FROM THE North LINE  
NO. 990 FEET FROM THE East LINE OF SEC. 21 TWP. 12S RGE. 38E NADP

7. Unit Agreement Name  
8. Farm or Lease Name  
Fields Ranch  
9. Well No.  
#1  
10. Field and Pool, or Willcut  
Gladiola - Wolfcamp  
12. County  
Lea

18. Proposed Depth  
9800'  
19A. Formation  
Wolfcamp  
20. History or C.T.  
Rotary  
21A. Kind & Status Plug Bond  
Blanket  
21B. Drilling Contractor  
Moranco  
22. Approx. Date Work will start  
December 7, 1983

PROPOSED CASING AND CEMENT PROGRAM

SIZE OF HOLE	SIZE OF CASING	WEIGHT PER FOOT	SETTING DEPTH	SACKS OF CEMENT	EST. TOP
17-1/2"	13-3/8"	54.5#	500'	550	Circulate
12-1/4"	8-5/8"	24 & 32#	4600'	2050	Circulate
7-7/8"	4-1/2"	11.6#	9700'	450	8000'

Adequate blowout equipment (Shaffer 5000# Double Ram Hydraulic) will be utilized to insure safe operations at all times. No high pressure zones anticipated.

APPROVED FOR 180 DAYS  
PERMIT EXPIRES 6/17/84  
UNLESS DRILLING UNDERWAY

ABOVE SPACE DESCRIBE PROPOSED PROGRAM: IF PROPOSAL IS TO DEEPEN OR PLUG BACK, GIVE DATA ON PRESENT PRODUCTIVE ZONE AND PROPOSED NEW PRODUCTIVE ZONE. GIVE BLOWOUT PREVENTER PROGRAM, IF ANY.

I hereby certify that the information above is true and complete to the best of my knowledge and belief.

Joe T. Janica Title NRE, Agent Date November 28, 1983  
(This space for State Use)

ORIGINAL SIGNED BY JERRY SEXTON  
APPROVED BY DISTRICT 1 SUPERVISOR TITLE DATE DEC 1 1983  
CONDITIONS OF APPROVAL, IF ANY:

**MEXICO OIL CONSERVATION COMMISSION  
WELL LOCATION AND ACREAGE DEDICATION PLAT**

Form C-102  
Supersedes C-128  
Effective 1-1-65

All distances must be from the outer boundaries of the Section

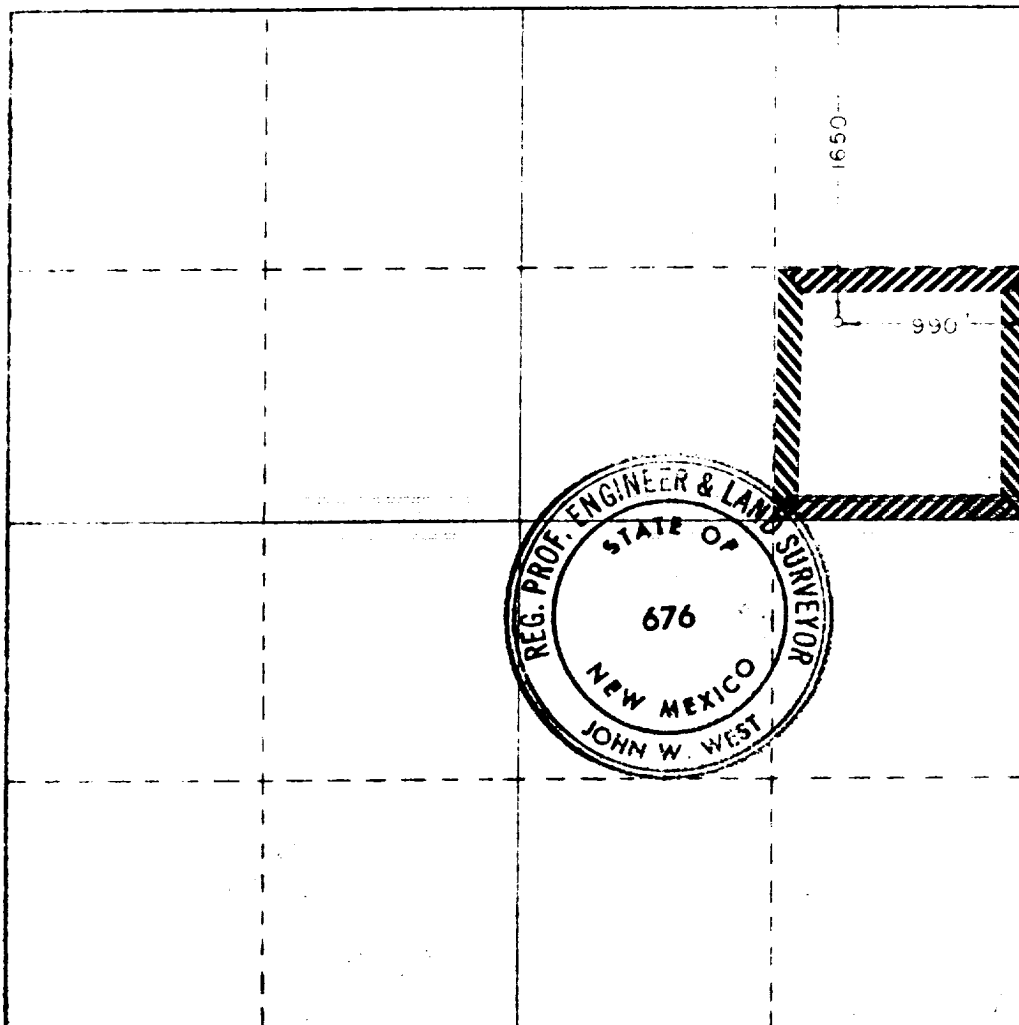
Lessee <b>Western Reserve Oil Co.</b>			Field Ranch		Well No. <b>1</b>
Section <b>H</b>	Section <b>21</b>	Township <b>12 South</b>	Range <b>38 East</b>	County <b>Lea County</b>	
Location of Well:					
<b>1650</b> feet from the <b>North</b>		<b>990</b> feet from the <b>East</b>			
Section Area <b>3821.4</b>	Producing Formation <b>Wolfcamp</b>	Stratigraphic Unit <b>Gladiola</b>	Estimated Acreage <b>40</b>		

1. Outline the acreage dedicated to the subject well by colored pencil or hatchure marks on the plat below.
2. If more than one lease is dedicated to the well, outline each and identify the ownership thereof (both as to working interest and royalty).
3. If more than one lease of different ownership is dedicated to the well, have the interests of all owners been consolidated by communitization, unitization, force-pooling, etc?

☐ Yes ☐ No If answer is "yes," type of consolidation \_\_\_\_\_

If answer is "no," list the owners and tract descriptions which have actually been consolidated. (Use reverse side of this form if necessary.) \_\_\_\_\_

No allowable will be assigned to the well until all interests have been consolidated (by communitization, unitization, force-pooling, or otherwise) or until a non-standard unit, eliminating such interests, has been approved by the Commission.



**CERTIFICATION**

I hereby certify that the information contained herein is true and complete to the best of my knowledge and belief.

*J. T. Janica*

Name  
**J. T. Janica**  
Position  
**NRE, Agents for**  
Company  
**Western Reserves Oil Co.**  
Date  
**December 1, 1983**

I hereby certify that the well location shown on this plat was plotted from field notes of actual surveys made by me or under my supervision, and that the same is true and correct to the best of my knowledge and belief.

Date Surveyed  
**November 25, 1983**  
Registered Professional Engineer and/or Land Surveyor

*John W. West*

Certificate No. **JOHN W. WEST, 676**  
**RONALD J. EIDSON, 3239**

0 330 660 990 1320 1650 1980 2310 2640 2970 3300 3630 3960 4290 4620 4950 5280 5610 5940 6270 6600

Rec'd 10-8-86

ELF

RECEIVED  
DEC 1 - 1983  
HOBBS