

NEW MEXICO OIL CONSERVATION COMMISSION  
WELL LOCATION AND ACREAGE DEDICATION PLAT

Form C-102  
Supersedes C-128  
Effective 1-1-65

All distances must be from the outer boundaries of the Section

Operator <b>MARATHON OIL COMPANY</b>			Lease <b>EFFIE BOYD</b>		Well No. <b>1</b>
Tract Letter <b>I</b>	Section <b>11</b>	Township <b>4 South</b>	Range <b>31 East</b>	County <b>Roosevelt</b>	
Actual Footage Location of Well: <b>1980</b> feet from the <b>South</b> line and <b>660</b> feet from the <b>East</b> line					
Ground Level Elev <b>4336.1</b>	Producing Formation <b>Montoya</b>		Pool <b>Wildcat</b>	Footage of Section <b>40</b>	

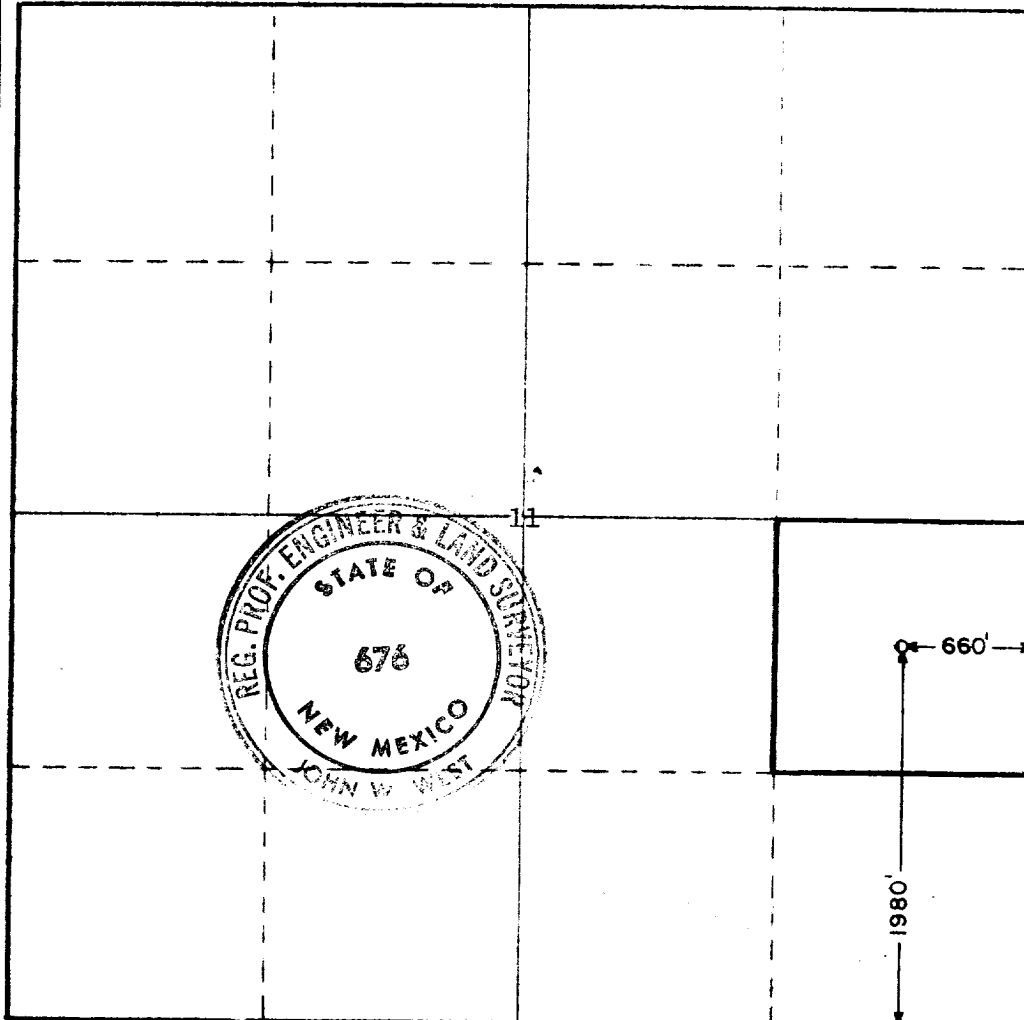
1. Outline the acreage dedicated to the subject well by colored pencil or hatchure marks on the plat below.
2. If more than one lease is dedicated to the well, outline each and identify the ownership thereof (both as to working interest and royalty)
3. If more than one lease of different ownership is dedicated to the well, have the interests of all owners been consolidated by communitization, unitization, force-pooling, etc?

☒ Yes ☐ No If answer is "yes," type of consolidation Communitization

If answer is "no," list the owners and tract descriptions which have actually been consolidated (Use reverse side of this form if necessary.)

No allowable will be assigned to the well until all interests have been consolidated (by communitization, unitization, forced-pooling, or otherwise) or until a non-standard unit, eliminating such interests, has been approved by the Commission.

R-31E



CERTIFICATION

I hereby certify that the information contained herein is true and complete to the best of my knowledge and belief.

*Michael D. Anderson*  
Name

Michael D. Anderson

Position

Production Engineer

Company

Marathon Oil Company

Date

October 8, 1979

I hereby certify that the well location shown on this plat was plotted from field notes of actual surveys made by me or under my supervision, and that the same is true and correct to the best of my knowledge and belief.

Date Surveyed

October 5, 1979

Registered Professional Engineer and/or Land Surveyor

*John W. West*  
Certificate No.

John W. West

676

Ronald J. Eidson 3239

0 320 640 960 1280 1600 1920 2240 2560 2880 3200 3520 3840 4160 4480 4800 5120 5440 5760 6080 6400 6720 7040 7360 7680 8000 8320 8640 8960 9280 9600

T  
22  
S

RECEIVED

OCT 10 1970

C.C.D. HOBBS, OFFICE

103