

UNITED STATES
DEPARTMENT OF THE INTERIOR
GEOLOGICAL SURVEY

APPLICATION FOR PERMIT TO DRILL, DEEPEN, OR PLUG BACK

1a. TYPE OF WORK

DRILL ☒DEEPEN ☐PLUG BACK ☐

b. TYPE OF WELL

OIL
WELL ☒GAS
WELL ☐

OTHER

SINGLE
ZONE ☒MULTIPLE
ZONE ☐

2. NAME OF OPERATOR

J. M. Huber Corporation

3. ADDRESS OF OPERATOR

922 Vaughn Bldg., Midland, Texas

4. LOCATION OF WELL (Report location clearly and in accordance with any State requirements.)

At surface 1980 PE and 2130 PS lines, Sec. 12, 15S, 34E

Lea County, New Mexico

At proposed prod. zone

14. DISTANCE IN MILES AND DIRECTION FROM NEAREST TOWN OR POST OFFICE*

Eight miles Northwest from Lovington

15. DISTANCE FROM PROPOSED*

LOCATION TO NEAREST
PROPERTY OR LEASE LINE, FT.
(Also to nearest drlg. unit line, if any)

510'

16. NO. OF ACRES IN LEASE

19. PROPOSED DEPTH

10,700'

17. NO. OF ACRES ASSIGNED
TO THIS WELL

80 Acres

20. ROTARY OR CABLE TOOLS

Rotary

21. ELEVATIONS (Show whether DF, RT, GR, etc.)

4057 Ground Level

22. APPROX. DATE WORK WILL START*

Immediately

23.

PROPOSED CASING AND CEMENTING PROGRAM

SIZE OF HOLE	SIZE OF CASING	WEIGHT PER FOOT	SETTING DEPTH	QUANTITY OF CEMENT
17-1/2"	13-3/8"	48#	350	300 sacks (Circulate)
12-1/4"	8-5/8"	24 & 32#	4600	200 sacks
7-7/8"	4-1/2"	10.5 & 11.6#	10700 or T.D.	250 sacks

IN ABOVE SPACE DESCRIBE PROPOSED PROGRAM: If proposal is to deepen or plug back, give data on present productive zone and proposed new productive zone. If proposal is to drill or deepen directionally, give pertinent data on subsurface locations and measured and true vertical depths. Give blowout preventer program, if any.

24.

SIGNED



TITLE

District Superintendent

DATE Dec. 8, 1965

(This space for Federal or State office use)

PERMIT NO.

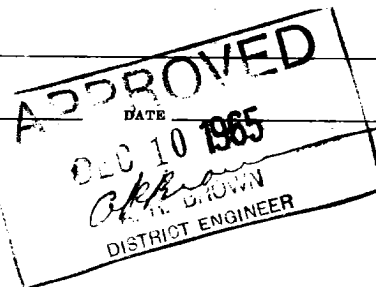
APPROVAL DATE

APPROVED BY

TITLE

CONDITIONS OF APPROVAL, IF ANY:

*See Instructions On Reverse Side



NEW MEXICO OIL CONSERVATION COMMISSION
WELL LOCATION AND ACREAGE DEDICATION PLAT

Form C-102
Supersedes C-128
Effective 1-1-65

All distances must be from the outer boundaries of the Section.

HOBBS OFFICE O. C. C.

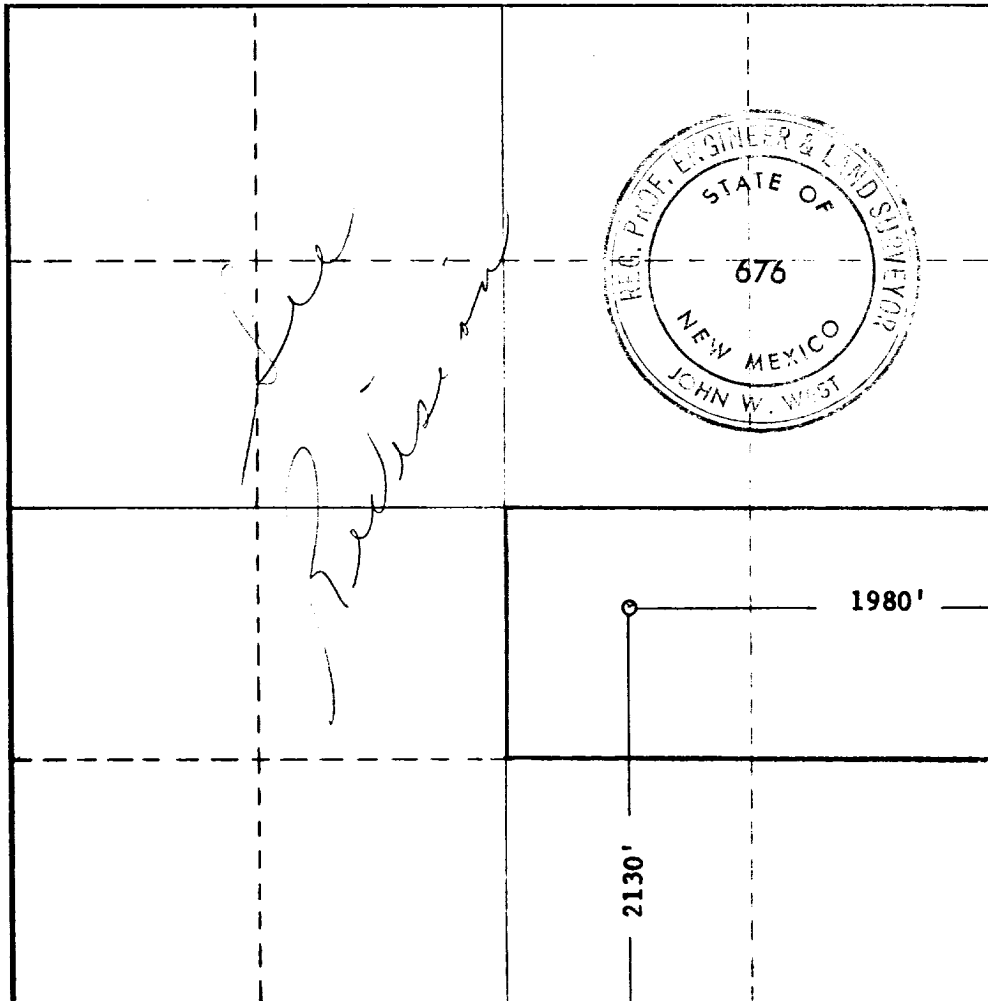
Operator J. M. HUBER CORP.			Lease STOLTZ FED		Well No. 1
Unit Letter J	Section 12	Township 15 SOUTH	Range 34 EAST	County LEA	
Actual Footage Location of Well: 2130 feet from the SOUTH line and 1980 feet from the EAST line					
Ground Level Elev. 4057.0	Producing Formation Lower Wolfcamp	Pool Morton-Lower Wolfcamp	Dedicated Acreage: 80 Acres		

1. Outline the acreage dedicated to the subject well by colored pencil or hatchure marks on the plat below.
2. If more than one lease is dedicated to the well, outline each and identify the ownership thereof (both as to working interest and royalty).
3. If more than one lease of different ownership is dedicated to the well, have the interests of all owners been consolidated by communitization, unitization, force-pooling, etc?

☐ Yes ☐ No If answer is "yes," type of consolidation _____

If answer is "no," list the owners and tract descriptions which have actually been consolidated. (Use reverse side of this form if necessary.) _____

No allowable will be assigned to the well until all interests have been consolidated (by communitization, unitization, forced-pooling, or otherwise) or until a non-standard unit, eliminating such interests, has been approved by the Commission.



CERTIFICATION

I hereby certify that the information contained herein is true and complete to the best of my knowledge and belief.

Name Alfred L. Merkle
Position **District Superintendent**
Company **J. M. Huber Corporation**
Date **December 8, 1965**

I hereby certify that the well location shown on this plat was plotted from field notes of actual surveys made by me or under my supervision, and that the same is true and correct to the best of my knowledge and belief.

Date Surveyed **11-30-1965**
Registered Professional Engineer and/or Land Surveyor

Certificate No. **676**

