

**NEW MEXICO OIL CONSERVATION COMMISSION  
WELL LOCATION AND ACREAGE DEDICATION PLAT**

Form C-102  
Supersedes C-128  
Effective 1-1-65

All distances must be from the outer boundaries of the Section

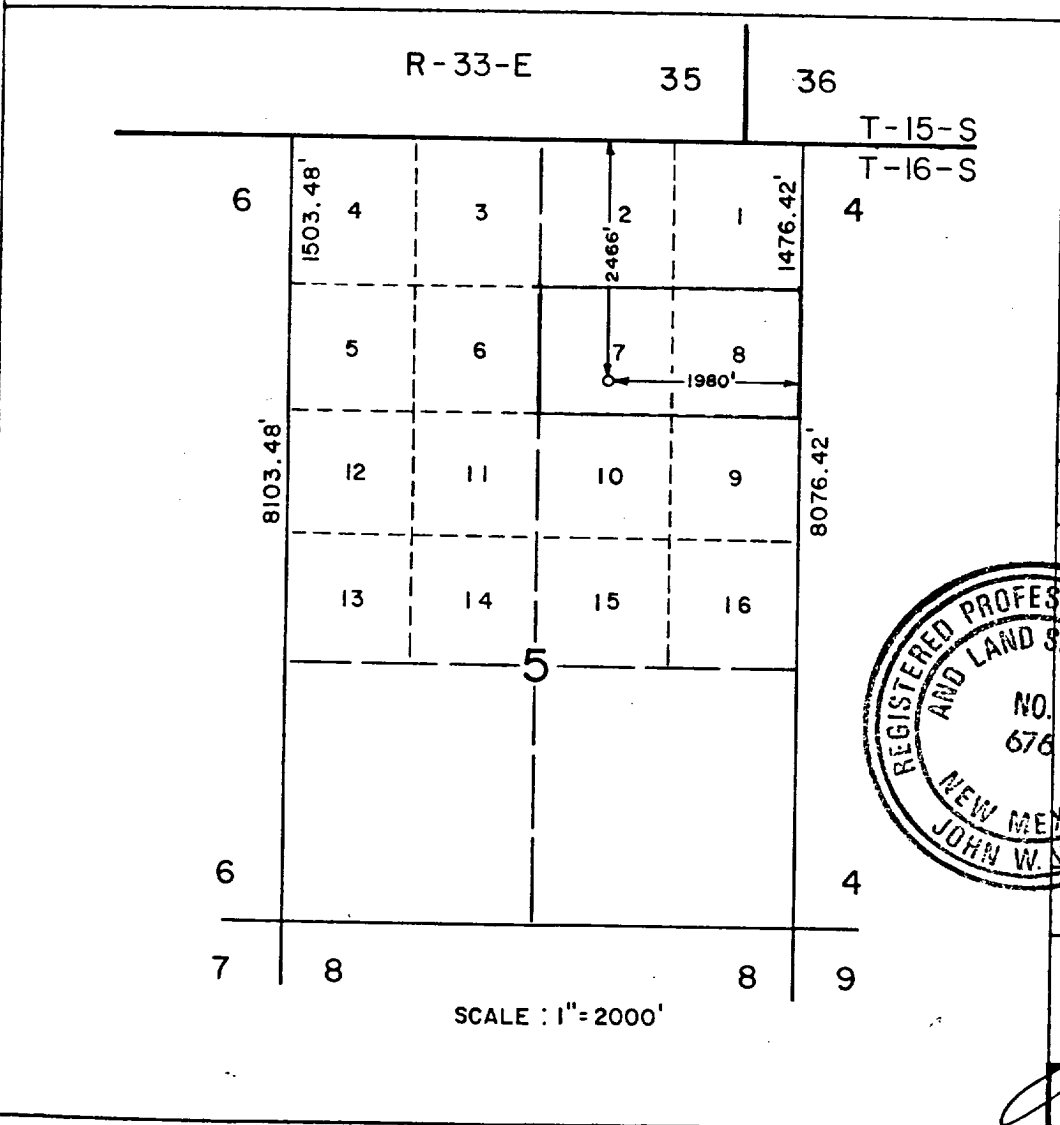
Operator <b>SANTA FE ENERGY OPERATING PARTNERS L.P.</b>			Lease <b>NH 5 FEDERAL</b>		Well No. <b>1</b>
Unit Letter <b>G</b>	Section <b>5</b>	Township <b>16 SOUTH</b>	Range <b>34 EAST</b>	County <b>LEA</b>	
Actual Footage Location of Well: <b>2466</b> feet from the <b>NORTH</b> line and <b>1980</b> feet from the <b>EAST</b> line					
Ground Level Elev. <b>4143.5</b>	Producing Formation <b>Wolfcamp</b>		Pool <b>North Hume - Wolfcamp</b>		Dedicated Acreage: <b>80</b> Acres

1. Outline the acreage dedicated to the subject well by colored pencil or hachure marks on the plat below.
2. If more than one lease is dedicated to the well, outline each and identify the ownership thereof (both as to working interest and royalty).
3. If more than one lease of different ownership is dedicated to the well, have the interests of all owners been consolidated by communitization, unitization, force-pooling, etc?

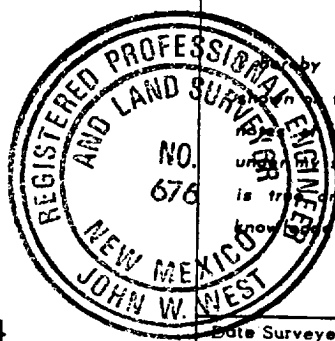
Yes  No If answer is "yes," type of consolidation \_\_\_\_\_

If answer is "no," list the owners and tract descriptions which have actually been consolidated. (Use reverse side of this form if necessary.) \_\_\_\_\_

No allowable will be assigned to the well until all interests have been consolidated (by communitization, unitization, forced-pooling, or otherwise) or until a non-standard unit, eliminating such interests, has been approved by the Commission.



CERTIFICATION	
I hereby certify that the information contained herein is true and complete to the best of my knowledge and belief.	
<i>Anthony J. Welker</i>	
Name	<b>Anthony J. Welker</b>
Position	<b>District Production Engineer</b>
Company	<b>Santa Fe Energy Operating Partners, L.P.</b>
Date	<b>7-28-87</b>
I hereby certify that the well location on this plat was plotted from field actual surveys made by me or under my supervision, and that the same is true and correct to the best of my knowledge and belief.	
Date Surveyed	<b>SEPTEMBER 15, 1986</b>
Registered Professional Engineer and/or Land Surveyor	
<i>John W. West</i>	
Certificate No.	<b>JOHN W. WEST 676</b>
<b>Ronald J. Eidson 3239</b>	



RECEIVED  
JUL 29 1987  
OCD  
HOBBS OFFICE

NEW MEXICO OIL CONSERVATION COMMISSION  
WELL LOCATION AND ACREAGE DEDICATION PLAT

Form C-102  
Supersedes C-128  
Effective 1-1-65

All distances must be from the outer boundaries of the Section

Operator SANTA FE ENERGY OPERATING PARTNERS L.P.		Lease NH 5 FEDERAL		Well No. 1
Unit Letter G	Section 5	Township 16 SOUTH	Range 34 EAST	County LEA
Actual Footage Location of Well: 2466 feet from the NORTH line and 1980 feet from the EAST line				
Ground Level Elev. 4143.5	Producing Formation Wolfcamp	Pool North Hume Wolfcamp	Dedicated Acreage: 160 Acres	

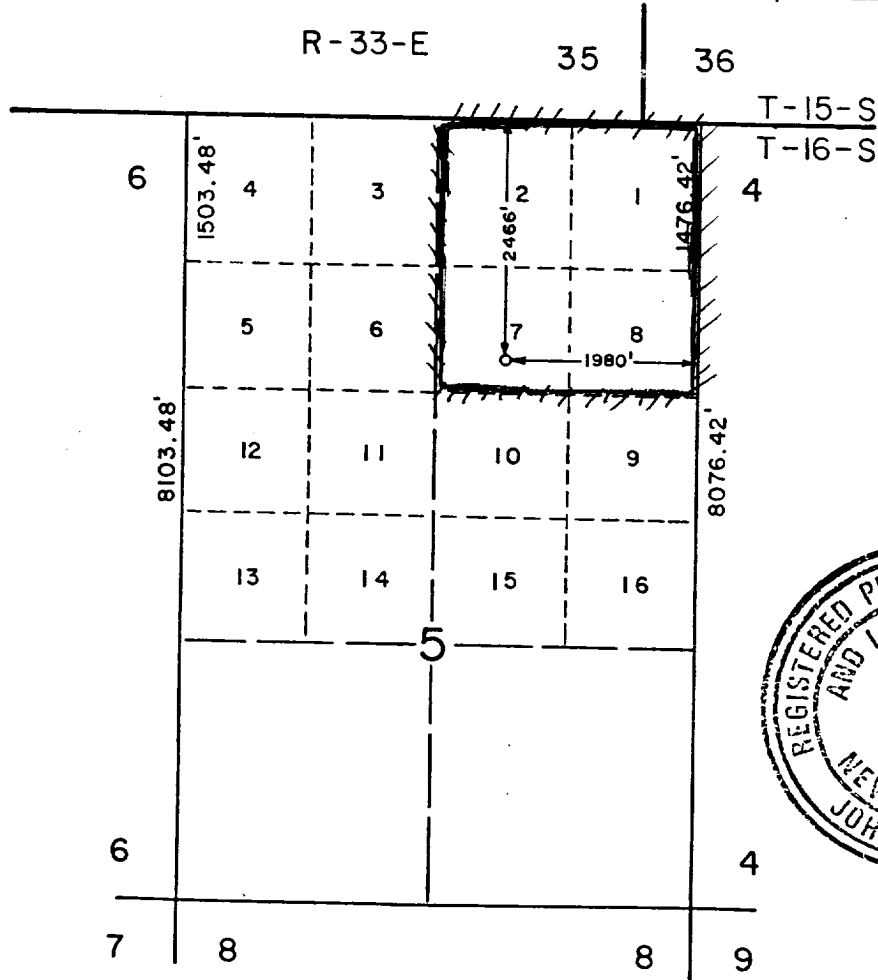
1. Outline the acreage dedicated to the subject well by colored pencil or hachure marks on the plat below. *160 ac*
2. If more than one lease is dedicated to the well, outline each and identify the ownership thereof (both as to working interest and royalty).
3. If more than one lease of different ownership is dedicated to the well, have the interests of all owners been consolidated by communitization, unitization, force-pooling, etc?

Yes  No If answer is "yes;" type of consolidation \_\_\_\_\_

If answer is "no;" list the owners and tract descriptions which have actually been consolidated. (Use reverse side of this form if necessary.) \_\_\_\_\_

No allowable will be assigned to the well until all interests have been consolidated (by communitization, unitization, forced-pooling, or otherwise) or until a non-standard unit, eliminating such interests, has been approved by the Commission.

*160 ac sp eff. 7-1-88 R-8476-A*



CERTIFICATION

I hereby certify that the information contained herein is true and complete to the best of my knowledge and belief.

*Thomas E. Gentry*  
Name

Thomas E. Gentry  
Position  
District Operations Manager

Company Santa Fe Energy  
Operating Partners, L.P.

Date  
6-17-88



I hereby certify that the well location shown on this plat was plotted from field actual surveys made by me or under my supervision, and that the same is true and correct to the best of my knowledge and belief.

Date Surveyed  
SEPTEMBER 15, 1986

Registered Professional Engineer  
and/or Land Surveyor

Certificate No JOHN W. WEST 676