

Submit to appropriate
 District Office
 State Lease - 4 copies
 Fee Lease - 3 copies

State of New Mexico
 Energy, Minerals and Natural Resources Department

Form C-102
 Revised 1-1-89

OIL CONSERVATION DIVISION

P.O. Box 2088
 Santa Fe, New Mexico 87504-2088

DISTRICT I
 P.O. Box 1040, Hobbs, NM 88240

DISTRICT II
 P.O. Drawer DD, Artesia, NM 88210

DISTRICT III
 1000 Rio Bronson Rd., Aztec, NM 87410

WELL LOCATION AND ACREAGE DEDICATION PLAT

All Distances must be from the outer boundaries of the section

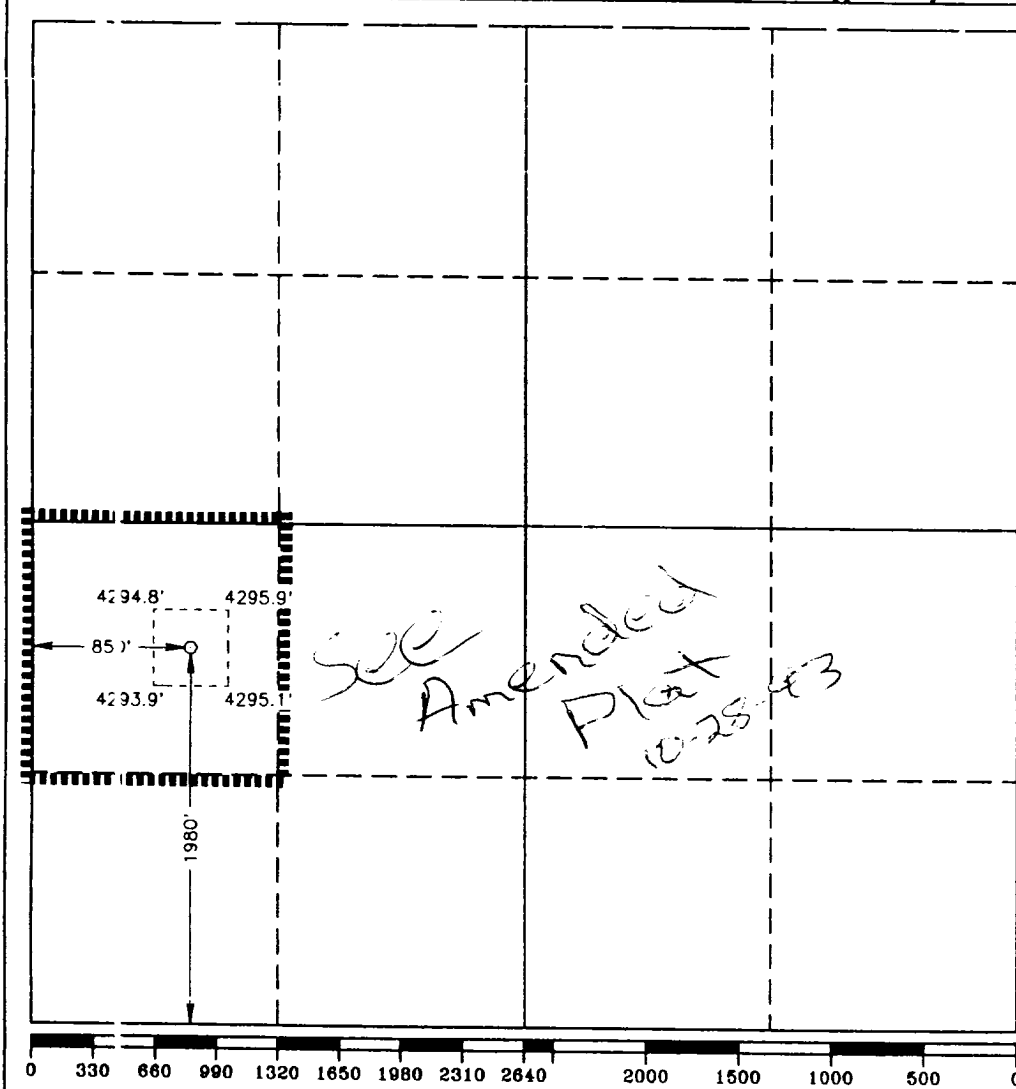
Operator CONOCO INC.			Lease ANDERSON RANCH UNIT		Well No. 21
Unit Letter T	Section 1	Township 16 SOUTH	Range 32 EAST	County NMPM LEA	
Actual Footage Location of Well: 1980 feet from the SOUTH line and 850 feet from the WEST line					
Ground Level Elev. 4295.0'	Producing Formation Ellenburger	Pool Undesignated Ellenburger		Dedicated Acreage: 40 Acres	

- Outline the acreage dedicated to the subject well by colored pencil or hachure marks on the plat below.
- If more than one lease is dedicated to the well, outline each and identify the ownership thereof (both as to working interest and royalty).
- If more than one lease of different ownership is dedicated to the well, have the interest of all owners been consolidated by communitization, unitization, force-pooling, etc.?

Yes No If answer is "yes" type of consolidation _____

If answer is "no" list of owners and tract descriptions which have actually been consolidated. (Use reverse side of this form necessary.)

No allowable will be assigned to the well unit all interests have been consolidated (by communitization, unitization, forced-pooling, otherwise or until a non-standard unit, eliminating such interest, has been approved by the Division.



OPERATOR CERTIFICATION

I hereby certify the the information contained herein is true and complete to the best of my knowledge and belief.

Signature: *Gary W. Hoover*
 Printed Name: **Gerry W. Hoover**
 Position: **Sr. Conservation Coordinator**
 Company: **Conoco Inc.**
 Date: **8-2-93**

SURVEYOR CERTIFICATION

I hereby certify that the well location shown on this plat was plotted from field notes of actual surveys made by me or under my supervision, and that the same is true and correct to the best of my knowledge and belief.

Date Surveyed: **JUNE 18, 1993**

Signature & Seal of Professional Surveyor:

 Gary L. Jones

Certificate No. JOHN W. WEST, 676
 RONALD J. SIDON, 3239
 GARY L. JONES, 7977

93-11-1142