

Submit to Appropriate District Office
 Late Lease - 4 copies
 Fee Lease - 3 copies

OIL CONSERVATION DIVISION

P.O. Box 2088
 Santa Fe, New Mexico 87504-2088

DISTRICT I
 P.O. Box 1980, Hobbs, NM 88240

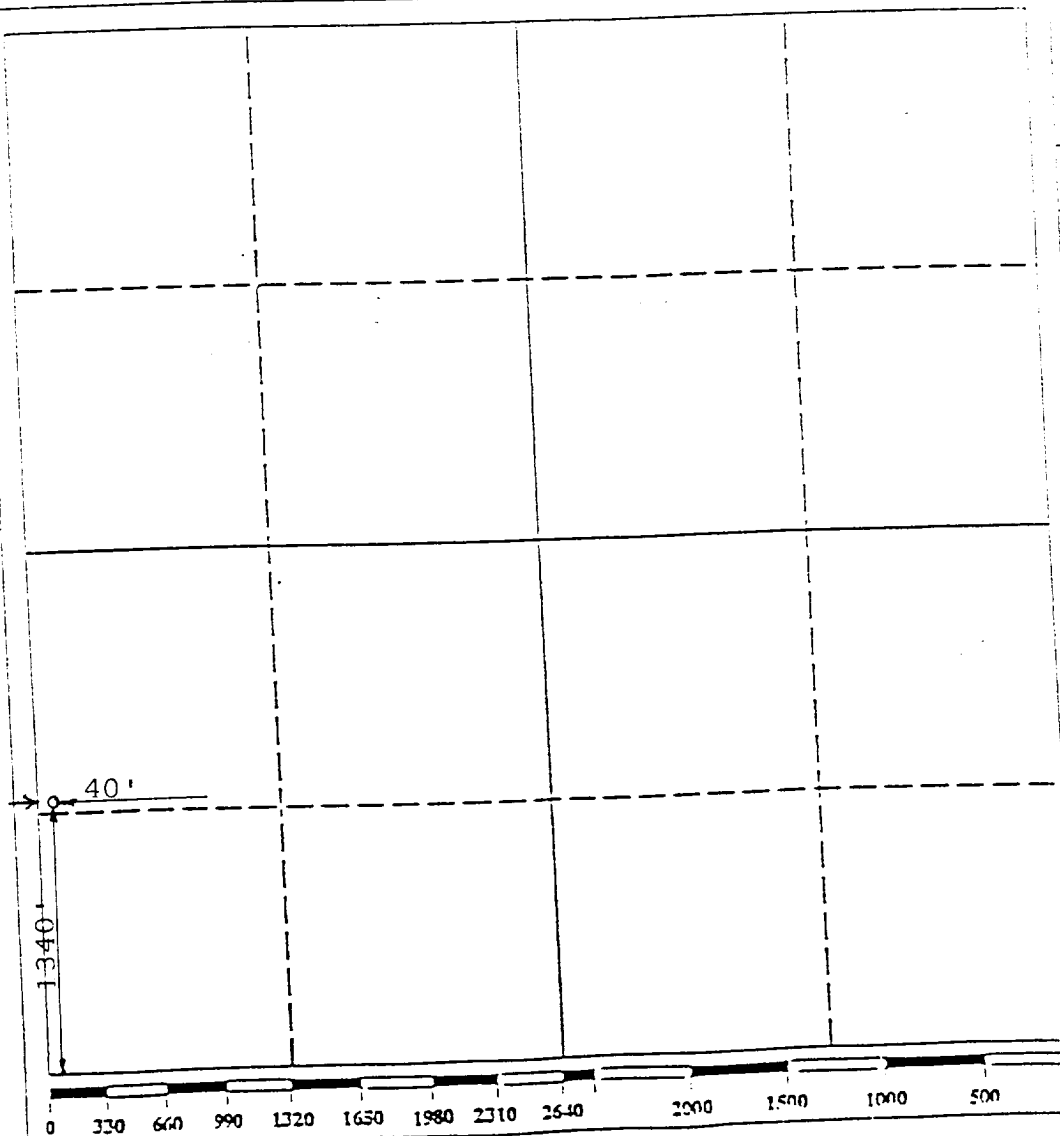
DISTRICT II
 P.O. Drawer DD, Artesia, NM 88210

DISTRICT III
 1000 Rio Brazos Rd., Aztec, NM 87410

WELL LOCATION AND ACREAGE DEDICATION PLAT
 All Distances must be from the outer boundaries of the section

Operator The Wiser Oil Company		Lease Caprock Maljamar Unit	Well No. 151
Unit Letter L	Section 17	Township 17 South	Range 33 East
		County Lea	
Actual Footage Location of Well: 1340 feet from the South line and 40 feet from the West line			
Ground level Elev. 4209	Producing Formation Grayburg & San Andres	Pool Maljamar Grayburg San Andres	Dedicated Acreage: 40 Acres

- Outline the acreage dedicated to the subject well by colored pencil or machine marks on the plat below.
- If more than one lease is dedicated to the well, outline each and identify the ownership thereof (both as to working interest and royalty).
- If more than one lease of different ownership is dedicated to the well, have the interest of all owners been consolidated by communitization, unitization, force-pooling, etc.?
 - Yes No If answer is "yes" type of consolidation _____
 If answer is "no" list the owners and tract descriptions which have actually been consolidated. (Use reverse side of this form if necessary.) _____
 No allowable will be assigned to the well until all interests have been consolidated (by communitization, unitization, force-pooling, or otherwise) or until a non-standard unit, eliminating such interest, has been approved by the Division.



OPERATOR CERTIFICATION

I hereby certify that the information contained herein is true and complete to the best of my knowledge and belief.

Perry L. Hughes
 Signature
PERRY L. HUGHES
 Printed Name
AGENT
 Position
THE WISER OIL COMPANY
 Company
03/06/95
 Date

SURVEYOR CERTIFICATION

I hereby certify that the well location shown on this plat was plotted from field notes of actual surveys made by me or under my supervision, and that the same is true and correct to the best of my knowledge and belief.

Date Surveyed
February 22, 1995

Signature & Seal of **P. R. PATTON**
 Professional Surveyor.

Certificate No.
8112

11/22/95

11/22/95
11/22/95
11/22/95

RECEIVED
NOV 22 1995
SECRET
102