

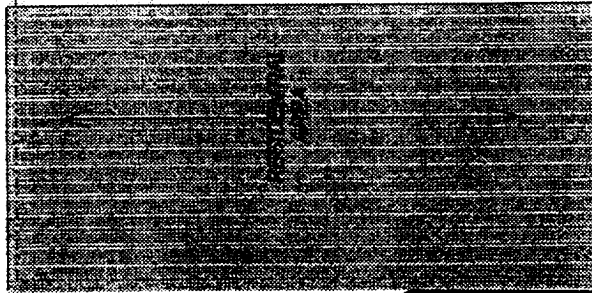
CHESAPEAKE OPERATING, INC

LOVINGTON DRILL SITE PROPOSAL

LEA COUNTY NEW MEXICO

60'

NORTH 17TH STREET

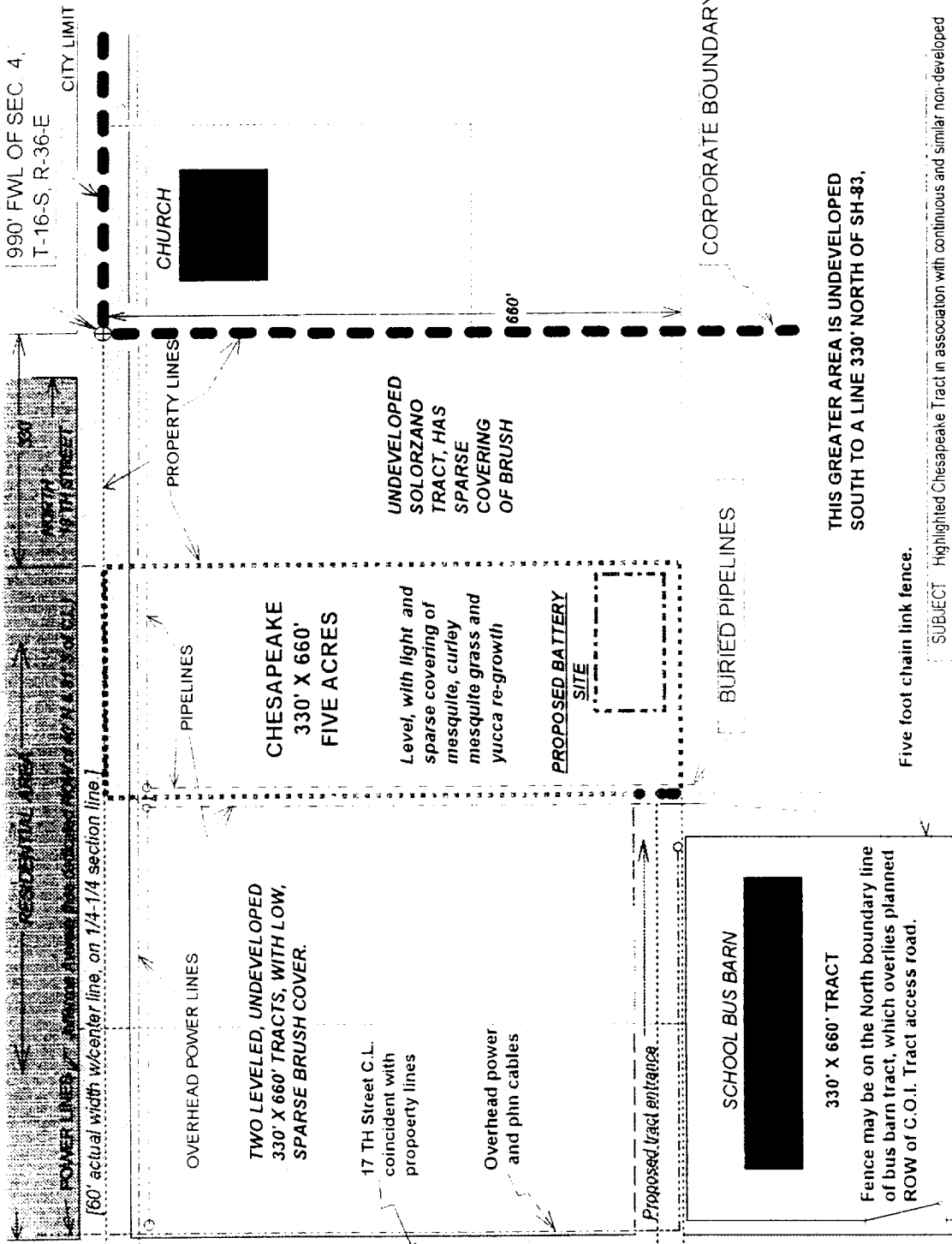


Washington Avenue

4/10 mile North of the Lovington Motor Inn, located at the intersection of 17TH Street and the Artesia Hwy, SH-82

EXHIBIT

2



THIS GREATER AREA IS UNDEVELOPED SOUTH TO A LINE 330' NORTH OF SH-83.

Five foot chain link fence.

SUBJECT Highlighted Chesapeake Tract in association with continuous and similar non-developed tracts. This property lies at the Southwest edge of Lovington, New Mexico, just outside the corporate city limits. Plat attempts to show pertinent land features such as streets, residential development, power lines, probable pipeline positions, and other conditions relative to planned onsite drilling and construction

SCALE: ONE INCH = 200'