

District I
1625 N. French Dr., Hobbs, NM 88240
District II
811 South First, Artesia, NM 88210
District III
1000 Rio Brazos Road, Aztec, NM 87410
District IV
2040 South Pacheco, Santa Fe, NM 87505

State of New Mexico
Energy Minerals and Natural Resources

Form C-101
Revised March 17, 1999

Oil Conservation Division
2040 South Pacheco
Santa Fe, NM 87505

Submit to appropriate District Office
State Lease - 6 Copies
Fee Lease - 5 Copies

~~AMENDED REPORT~~

APPLICATION FOR PERMIT TO DRILL, RE-ENTER, DEEPEN, PLUGBACK, OR ADD A ZONE

¹ Operator Name and Address CONCHO OIL & GAS CORP. 110 W. LOUISIAN STE 410 MIDLAND, TX 79701		² OGRID Number 193407
		³ API Number 30-025-35635
³ Property Code 28437	⁵ Property Name BIG 'D' STATE	⁶ Well No. 1

⁷ Surface Location

UL or lot no.	Section	Township	Range	Lot Idn	Feet from the	North/South line	Feet from the	East/West line	County
11	6	16S	34E		3498	NORTH	1200	WEST	LEA

⁸ Proposed Bottom Hole Location If Different From Surface

UL or lot no.	Section	Township	Range	Lot Idn	Feet from the	North/South line	Feet from the	East/West line	County
⁹ Proposed Pool 1 Hume Morrow					¹⁰ Proposed Pool 2 Strawn				

¹¹ Work Type Code N	¹² Well Type Code G	¹³ Cable/Rotary R	¹⁴ Lease Type Code S	¹⁵ Ground Level Elevation 4164'
¹⁶ Multiple S	¹⁷ Proposed Depth 12600	¹⁸ Formation ATOKA MORROW	¹⁹ Contractor	²⁰ Spud Date WHEN APPROVED

²¹ Proposed Casing and Cement Program

Hole Size	Casing Size	Casing weight/foot	Setting Depth	Sacks of Cement	Estimated TOC
25	20		40	Redi-Mix	SURF
17-1/2	13-3/8	48	400	550	SURF
12-1/4	8-5/8	32	4300	1400	SURF
7-7/8	5-1/2	17 & 20	12600	700	Est. 8000'

²² Describe the proposed program. If this application is to DEEPEN or PLUG BACK, give the data on the present productive zone and proposed new productive zone. Describe the blowout prevention program, if any. Use additional sheets if necessary.

Concho Oil & Gas Corp. respectfully requests approval to drill the Big 'D' State No. 1 well according to the following procedure:

1. Drill 25" hole to 40'. Set 40' of 20" conductor pipe & cmt to surface w/ Redi-Mix.
2. Drill 17-1/2" hole to 400'. Run & set 400' of 13-3/8", 48#, H-40, ST&C csg. Cmt w/ 550 sx 'C' cmt + additives, circ cmt to surface.
3. Drill 12-1/4" hole to 4300'. Run & set 4300' of 8-5/8", 32#, J-55 ST&C csg. Cmt w/ 1400 sx 'C' cmt + additives, circ cmt to surface.
4. Drill 7-7/8" hole to 12600'. Run & set 12600' of 5-1/2" 17 & 20#, N-80 LT&C csg. Cmt w/ 150 sx of Halco light "H" + .5% Halad 322, tail in w/ 550 sx of Super Modified "H" + .4% CFR-3 + .5% Halad 344 + 5# Gilsonite/sx +1# salt/sx. Est. TOC @ 8000'.

²³ I hereby certify that the information given above is true and complete to the best of my knowledge and belief.

Signature: *Terry Stathem*
Printed name: Terry Stathem
Title: Production Analyst

Date: 9-13-01

Phone: (915) 683-7443

OIL CONSERVATION DIVISION

Approved by:

Title:

Approval Date: **SEP 17 2001**

Expiration Date:

Conditions of Approval:

Attached

2001

4

DISTRICT I
P.O. Box 1980, Hobbs, NM 88241-1980

State of New Mexico
Energy, Minerals and Natural Resources Department

Form C-102
Revised February 10, 1994
Submit to Appropriate District Office
State Lease - 4 Copies
Fee Lease - 3 Copies

DISTRICT II
P.O. Drawer DD, Artesia, NM 88211-0719

OIL CONSERVATION DIVISION

P.O. Box 2088

Santa Fe, New Mexico 87504-2088

DISTRICT III
1000 Rio Brazos Rd., Aztec, NM 87410

DISTRICT IV
P.O. BOX 2088, SANTA FE, N.M. 87504-2088

WELL LOCATION AND ACREAGE DEDICATION PLAT

AMENDED REPORT

API Number 30-025-35635	Pool Code 78860	Pool Name Hume Atoka MOTLOW
Property Code 28437	Property Name BIG "D" STATE	Well Number 1
OGRID No. 193407	Operator Name CONCHO OIL & GAS, INC.	Elevation 4164'

Surface Location

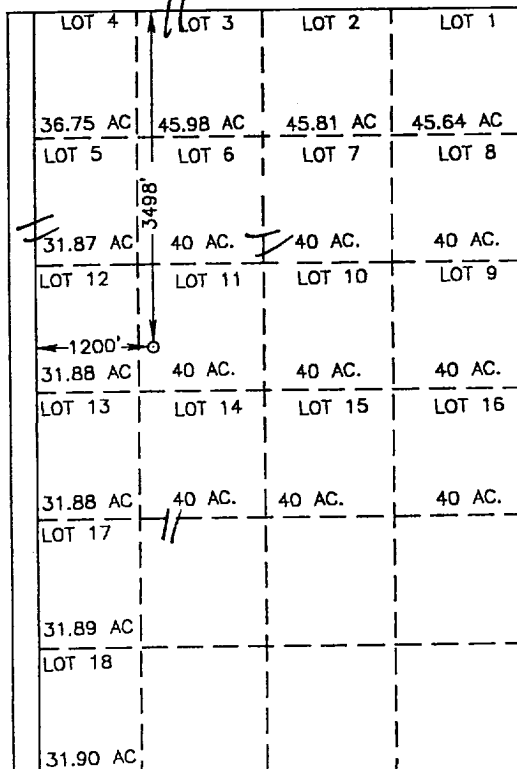
UL or lot No.	Section	Township	Range	Lot Idn	Feet from the	North/South line	Feet from the	East/West line	County
11	6	16-S	34-E		3498	NORTH	1200	WEST	LEA

Bottom Hole Location if Different From Surface

UL or lot No.	Section	Township	Range	Lot Idn	Feet from the	North/South line	Feet from the	East/West line	County

Dedicated Acres 298.36	Joint or Infill	Consolidation Code	Order No.
----------------------------------	-----------------	--------------------	-----------

NO ALLOWABLE WILL BE ASSIGNED TO THIS COMPLETION UNTIL ALL INTERESTS HAVE BEEN CONSOLIDATED OR A NON-STANDARD UNIT HAS BEEN APPROVED BY THE DIVISION



SCALE: 1" = 2000'

OPERATOR CERTIFICATION

I hereby certify that the information contained herein is true and complete to the best of my knowledge and belief.

Signature *Terri Stathem*

Printed Name
Terri Stathem

Title
Production Analyst

Date
7/16/01

SURVEYOR CERTIFICATION

I hereby certify that the well location shown on this plat was plotted from field notes of actual surveys made by me or under my supervision, and that the same is true and correct to the best of my belief.

JULY 09, 2001

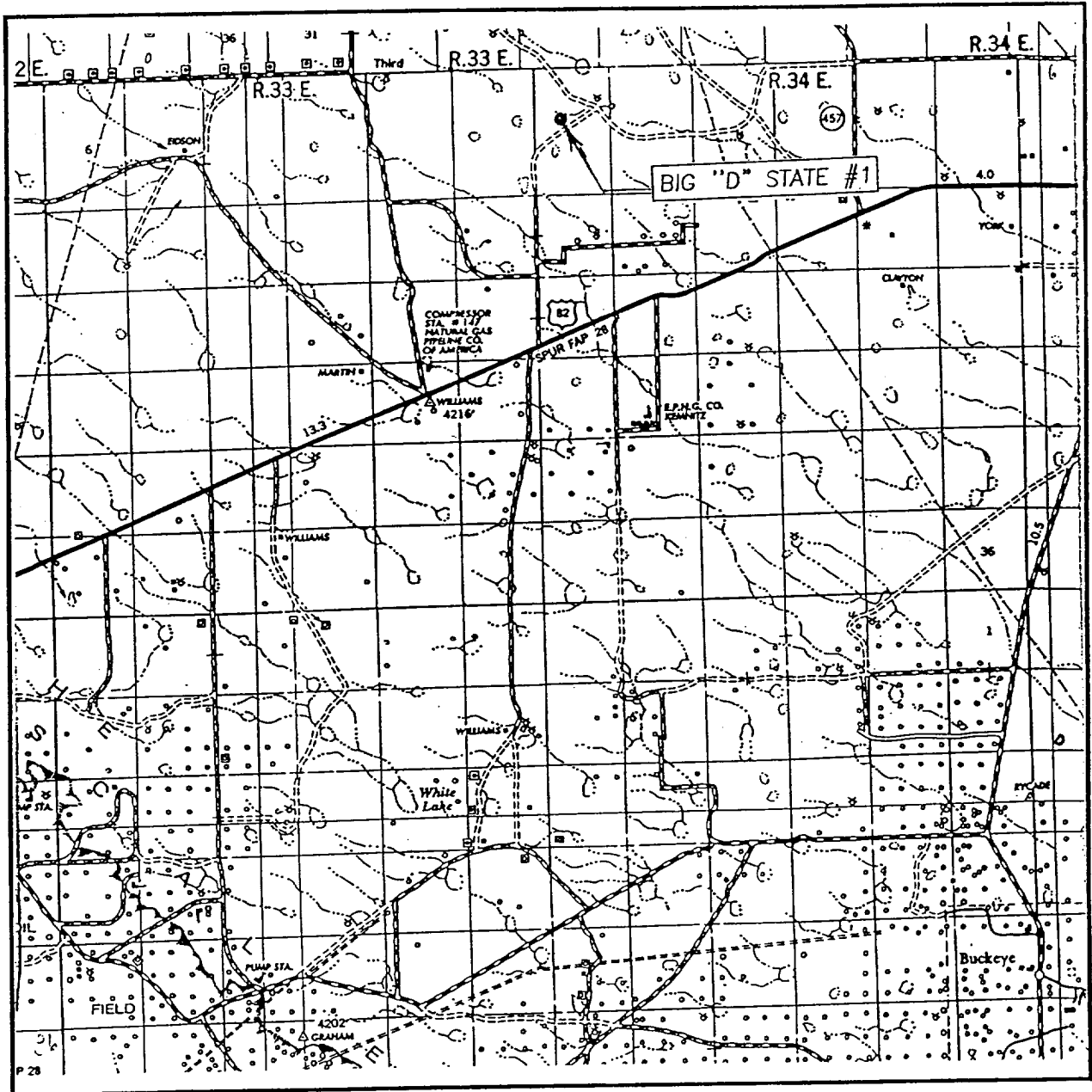
Date Surveyed _____ AWB

Signature & Seal of Professional Surveyor

Ronald J. Edson 7/10/01
01-11-0810

Certificate No. **RONALD J. EDSON 3239**
GARY EDSON 12641

VICINITY MAP



SCALE: 1" = 2 MILES

SEC. 6 TWP. 16-S RGE. 34-E

SURVEY N.M.P.M.

COUNTY LEA

DESCRIPTION 3498' FNL & 1200' FWL

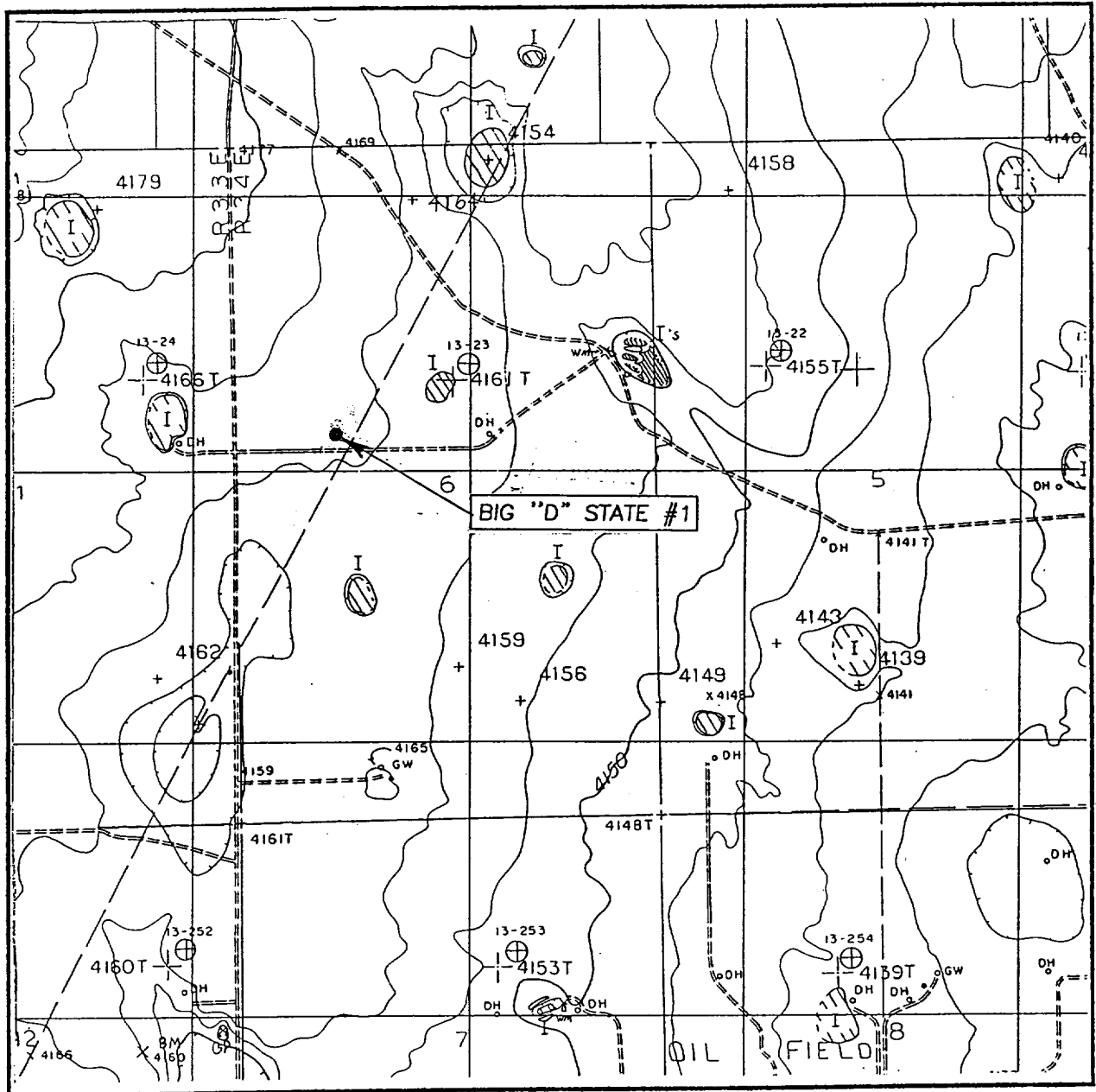
ELEVATION 4164'

OPERATOR CONCHO OIL & GAS CORPORATION

LEASE BIG "D" STATE

JOHN WEST SURVEYING
 HOBBS, NEW MEXICO
 (505) 393-3117

LOCATION VERIFICATION MAP



SCALE: 1" = 2000'

CONTOUR INTERVAL: 10'

BUCKEYE NE, N.M.

SEC. 6 TWP. 16-S RGE. 34-E

SURVEY N.M.P.M.

COUNTY LEA

DESCRIPTION 3498' FNL & 1200' FWL

ELEVATION 4164'

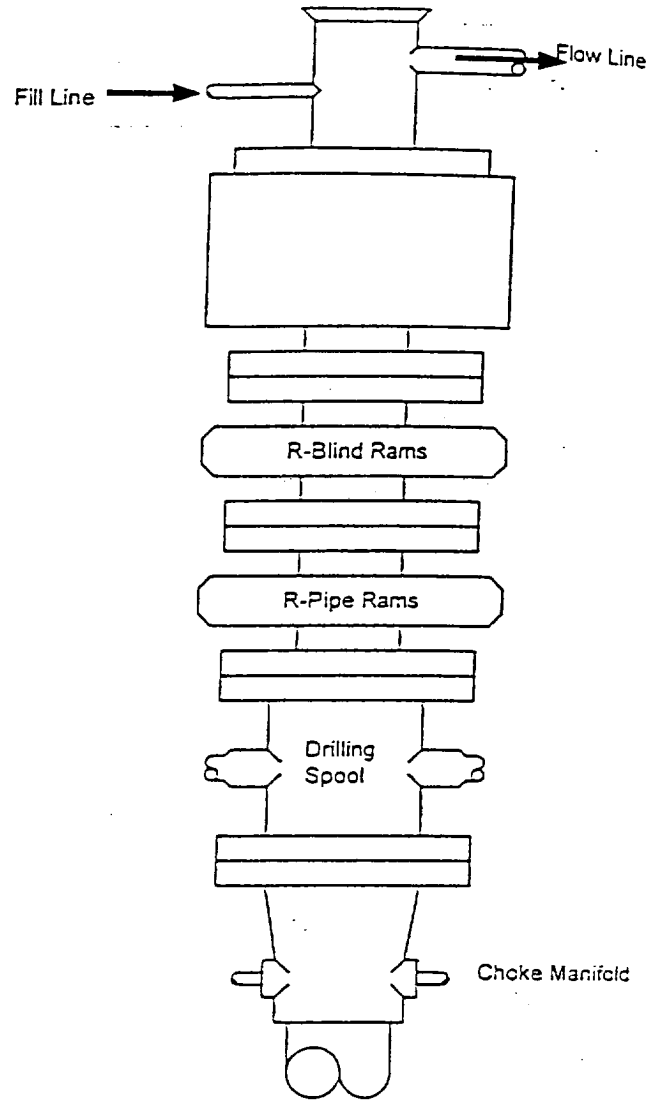
OPERATOR CONCHO OIL & GAS, INC.

LEASE BIG "D" STATE

U.S.G.S. TOPOGRAPHIC MAP
BUCKEYE NE, N.M.

JOHN WEST SURVEYING
HOBBS, NEW MEXICO
(505) 393-3117

BLOWOUT PREVENTER SYSTEM



Type 900 Series
3000 psi WP.

Choke Manifold Assembly for 3M WP System

