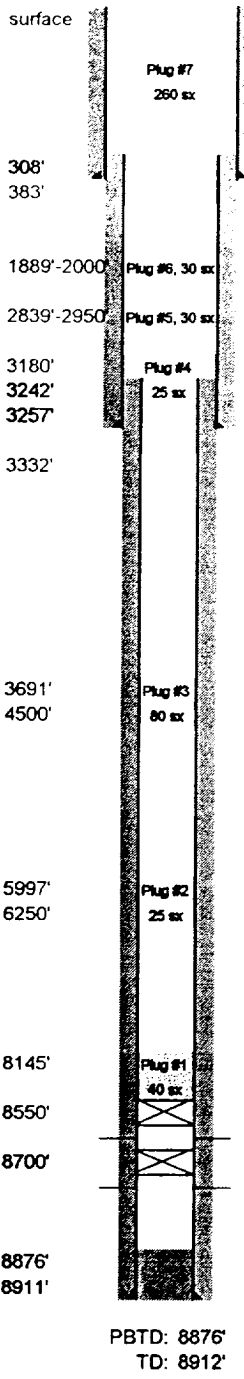


**Phillips Petroleum Company - Southwest Region
Vacuum Abo Unit #13-08**



KB 3961'
DF 3960' Ref
GL 3947'

Spot Plug #7 - min 260 sx., min interval: 358' or 50' below stub (whichever is deeper) - surf, calc'd interval: 383'-surf. Covers the surf casg shoe, stub, and surf plug.

Surface Hole: 16"
Surface Casing: 13-3/8", 48#, H-40 @ 308'
375 sx. cmt. Circ. 10 sx.

Spot Plug #6 - 30 sx., minimum interval: 2000'-1900', calc'd interval: 2000'-1889'. Covers the Rustler.

Spot Plug #5 - 30 sx., min interval: 2950'-2850', calc'd interval: 2950'-2839'. Covers the Yates

TOC at 3242' by temperature survey.

Spot Plug #4 - min 25 sx, min interval: 3307' or 50' inside stub - 50' above shoe or stub, calc'd interval: 3332'-3180'. Covers the int. casing shoe and prod. casing stub.

Intermediate Hole: 11"
Intermediate Casing: 8-5/8" @ 3257'.
2492' -24#, J-55 & 768'-32#, J-55
1250 sx cmt. TOC unknown.

Spot Plug #3 - 80 sx., min interval: 4500'-3798', calc'd interval: 4500'-3691'. Covers the San Andres, Grayburg & Queen.

Spot Plug #2 - min 25 sx., calc'd interval: 6250'-5997'. Covers the Clearfork and Glorieta.

Spot Plug #1 - 40 sx, minimum 25 sx, calc'd interval: 8550'-8145'. Covers the Abo Reef & Abo Shale.

Abo Perforations
8579'- 8687' (129 holes)
CIBP @ 8700'
8721' - 8816' (148 holes)

Production Hole: 7-7/8"
Production Casing: 5-1/2" 15.5# & 17#, J-55 @ 8911'
640 sx cmt. TOC at 3242' by temperature survey.

Lease & Well No.: Vacuum Abo Unit #13-08
Well Category: One Status: TA'd
Area: New Mexico
Subarea: Buckeye Field: Vacuum Abo Reef
API Number: 30-025-03048
Legal Description: 330' FNL, 990' FWL, Sec 4, T-18-S, R-35-E
Lea County, New Mexico
Spudded: 04/18/1961
Completed: 05/29/1961

Formation Tops:

Rustler	1552'
Yates	2905'
Queen	3798'
Grayburg	4085'
San Andres	4445'
Glorieta	6130'
Clearfork	6190'
Abo Shale	8274'
Abo Reef	8294'

Well History:

- 10/92 Set CIBP at 8500'. Tstd csq to 500 psi for 30 min. Held OK. TA'd 10/22/92.
- 5/01 Failed bradenhead test when 140 psig pressure was discovered on the intermediate casing. After pressure on casing was relieved, oil and water continued to leak out of intermediate casing.
- 11/01 Drilled out CIBP @ 8500'. Performed swab test. Set CIBP @ 8700' for P&A.

PBTD: 8876'
TD: 8912'