

NO. OF COPIES RECEIVED	
DISTRIBUTION	
SANTA FE	
FILE	
U.S.G.S.	
LAND OFFICE	
OPERATOR	

NEW MEXICO OIL CONSERVATION COMMISSION

Form C-101
Revised 1-1-65

5A. Indicate Type of Lease
STATE FEE

5. State Oil & Gas Lease No.
B-1306-1

APPLICATION FOR PERMIT TO DRILL, DEEPEN, OR PLUG BACK

1a. Type of Work
b. Type of Well DRILL DEEPEN PLUG BACK
OIL WELL GAS WELL OTHER SINGLE ZONE MULTIPLE ZONE

2. Name of Operator
TEXACO INC.

3. Address of Operator
P. O. Box 3109, Midland, Texas

4. Location of Well UNIT LETTER H LOCATED 1650 FEET FROM THE North LINE
AND 990 FEET FROM THE East LINE OF SEC. 6 TWP. 18-S RGE. 35-E NMPM

7. Unit Agreement Name

8. Farm or Lease Name
St. of N. Mex. "R" NCT-

9. Well No.
11

10. Field and Pool, or Wildcat
Vacuum Glorieta

12. County
Lea

19. Proposed Depth
6250

19A. Formation
Glorieta

20. Rotary or C.T.
Rotary

21. Elevations (Show whether DF, RT, etc.)
GR 3973'

21A. Kind & Status Plug. Bond
\$10,000 blanket

21B. Drilling Contractor
Unknown at present

22. Approx. Date Work will start
At once

23. PROPOSED CASING AND CEMENT PROGRAM

SIZE OF HOLE	SIZE OF CASING	WEIGHT PER FOOT	SETTING DEPTH	SACKS OF CEMENT	EST. TOP
13-3/4"	10-3/4"	32.75#, 21.63# 28.52#, 31.68#	1500'	800 *	
9-7/8"	7-5/8"	intermediate	casing will be run only if gas hinders drilling.		
6-3/4"	2-7/8"	6.5	6250'	1000 **	

- * Cement with 600 sx. Class "A" 10% gel, followed by 200 sx. Class "C" Neat. Use accelerator in neat.
- ** Cement with 600 sx. Incor 8% gel, followed by 400 sx. Incor 4% gel.

FORMATIONS

Completion to be through perforations with acid for stimulation.

Anhydrite	1470'
Top of salt	1645'
Base of salt	2460'
Yates	2620'
San Andres	4365'
Glorieta	5985'
Total Depth	6250'

IN ABOVE SPACE DESCRIBE PROPOSED PROGRAM; IF PROPOSAL IS TO DEEPEN OR PLUG BACK, GIVE DATA ON PRESENT PRODUCTIVE ZONE AND PROPOSED NEW PRODUCTIVE ZONE. GIVE BLOWOUT PREVENTER PROGRAM, IF ANY.

I hereby certify that the information above is true and complete to the best of my knowledge and belief.

Signed J. J. Walton Title Division Civil Engineer Date 4/19/65
(This space for State Use)

APPROVED BY _____ TITLE _____ DATE _____

CONDITIONS OF APPROVAL, IF ANY:

info

NEW MEXICO OIL CONSERVATION COMMISSION
WELL LOCATION AND ACREAGE DEDICATION PLAT

Form C-102
Supersedes C-128
Effective 1-1-65

All distances must be from the outer boundaries of the Section.

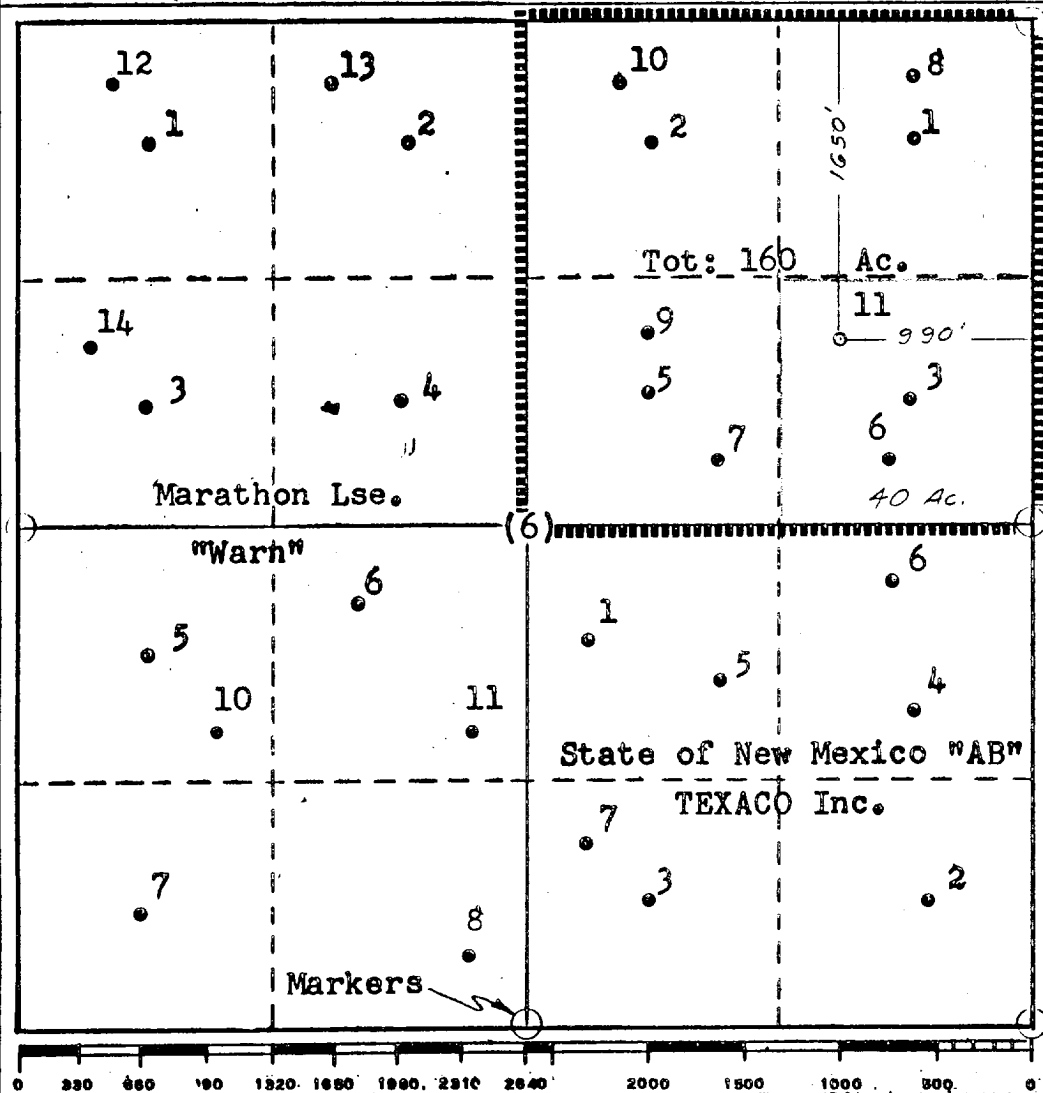
Operator TEXACO Inc.		Lease State of New Mexico "R" NCT-1		Well No. 11
Unit Letter H	Section 6	Township 18 South	Range 35 East	County Lea
Actual Footage Location of Well: 1650 feet from the North line and 990 feet from the East line Sec. 6				
Ground Level Elev. 3973	Producing Formation Glorieta	Pool Vacuum Glorieta	Dedicated Acreage 40 Acres	

1. Outline the acreage dedicated to the subject well by colored pencil or hachure marks on the plat below.
2. If more than one lease is dedicated to the well, outline each and identify the ownership thereof (both as to working interest and royalty).
3. If more than one lease of different ownership is dedicated to the well, have the interests of all owners been consolidated by communitization, unitization, force-pooling, etc?

Yes No If answer is "yes," type of consolidation _____

If answer is "no," list the owners and tract descriptions which have actually been consolidated. (Use reverse side of this form if necessary.) _____

No allowable will be assigned to the well until all interests have been consolidated (by communitization, unitization, forced-pooling, or otherwise) or until a non-standard unit, eliminating such interests, has been approved by the Commission.



CERTIFICATION	
I hereby certify that the information contained herein is true and complete to the best of my knowledge and belief.	
Name	<i>J. J. Velten</i> J. J. Velten
Position	Division Civil Engineer
Company	TEXACO Inc.
Date	4/19/65
I hereby certify that the well location shown on this plat was plotted from field notes of actual surveys made by me or under my supervision, and that the same is true and correct to the best of my knowledge and belief.	
Date Surveyed	4/16/65
Registered Professional Engineer and/or Land Surveyor	<i>J. J. Velten</i> J. J. Velten
Certificate No.	8174