

NO. OF COPIES RECEIVED	
DISTRIBUTION	
SANTA FE	
FILE	
U.S.G.S.	
LAND OFFICE	
OPERATOR	

NEW MEXICO OIL CONSERVATION COMMISSION

Form C-101
Revised 1-1-65 *2-17-71*

5A. Indicate Type of Lease
STATE FEE

5. State Oil & Gas Lease No.
E-1315

APPLICATION FOR PERMIT TO DRILL, DEEPEN, OR PLUG BACK

1a. Type of Work
DRILL DEEPEN PLUG BACK

b. Type of Well
OIL WELL GAS WELL OTHER
SINGLE ZONE MULTIPLE ZONE

2. Name of Operator
J. C. BARNES OIL CO.

3. Address of Operator
P.O. BOX - 505, MIDLAND, TEXAS 79701

4. Location of Well
UNIT LETTER **H** LOCATED **2183.7'** FEET FROM THE **NORTH** LINE
AND **660'** FEET FROM THE **EAST** LINE OF SEC. **5** TWP. **17-S** RGE. **34-E** NMPM

7. Unit Agreement Name

8. Farm or Lease Name
LEA - STATE

9. Well No.
2

10. Field and Pool, or Wildcat
UNISCRATED

12. County
LEA

19. Proposed Depth
11,900'

19A. Formation
GISCO

20. Rotary or C.T.
ROTARY

21. Elevations (Show whether DF, RT, etc.)
1106.8' GROUND

21A. Kind & Status Plug. Bond
STATEWIDE ON FILE

21B. Drilling Contractor
AED

22. Approx. Date Work will start
UPON APPROVAL

23. PROPOSED CASING AND CEMENT PROGRAM

SIZE OF HOLE	SIZE OF CASING	WEIGHT PER FOOT	SETTING DEPTH	SACKS OF CEMENT	EST. TOP
17 - 1/4"	13 - 3/8"	48#	360'	CIRC TO SHIF.	
11"	8 - 5/8"	21# & 32#	4300'	AS REQUIRED	BASE OF SALT
7 - 7/8"	5 - 1/2"	17#	11,900'	AS REQUIRED	10,000

THE COMMISSION MUST BE NOTIFIED
24 HOURS PRIOR TO RUNNING **13 3/4**
CASING.

5-22-71

IN ABOVE SPACE DESCRIBE PROPOSED PROGRAM, IF PROPOSAL IS TO DEEPEN OR PLUG BACK, GIVE DATA ON PRESENT PRODUCTIVE ZONE AND PROPOSED NEW PRODUCTIVE ZONE. GIVE BLOWOUT PREVENTER PROGRAM, IF ANY.

I hereby certify that the information above is true and complete to the best of my knowledge and belief.

Signed *[Signature]* Title FIELD OFFICE ACCT. Date FEBRUARY 19, 1971

(This space for State Use)

APPROVED BY *[Signature]* TITLE SUPERVISOR DISTRICT DATE FEB 25 1971

CONDITIONS OF APPROVAL, IF ANY:

RECEIVED

FEB 22 1971

OIL CONSERVATION COMM.
ROBBS, R. H.

FEB 22 1971

FEB 22 1971

**NEW MEXICO OIL CONSERVATION COMMISSION
WELL LOCATION AND ACREAGE DEDICATION PLAT**

Form C-102
Supersedes C-128
Effective 1-1-65

All distances must be from the outer boundaries of the Section.

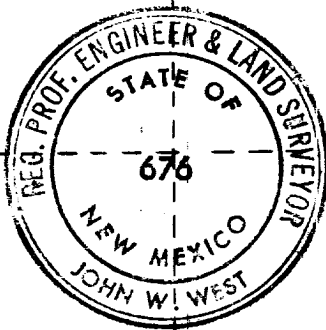
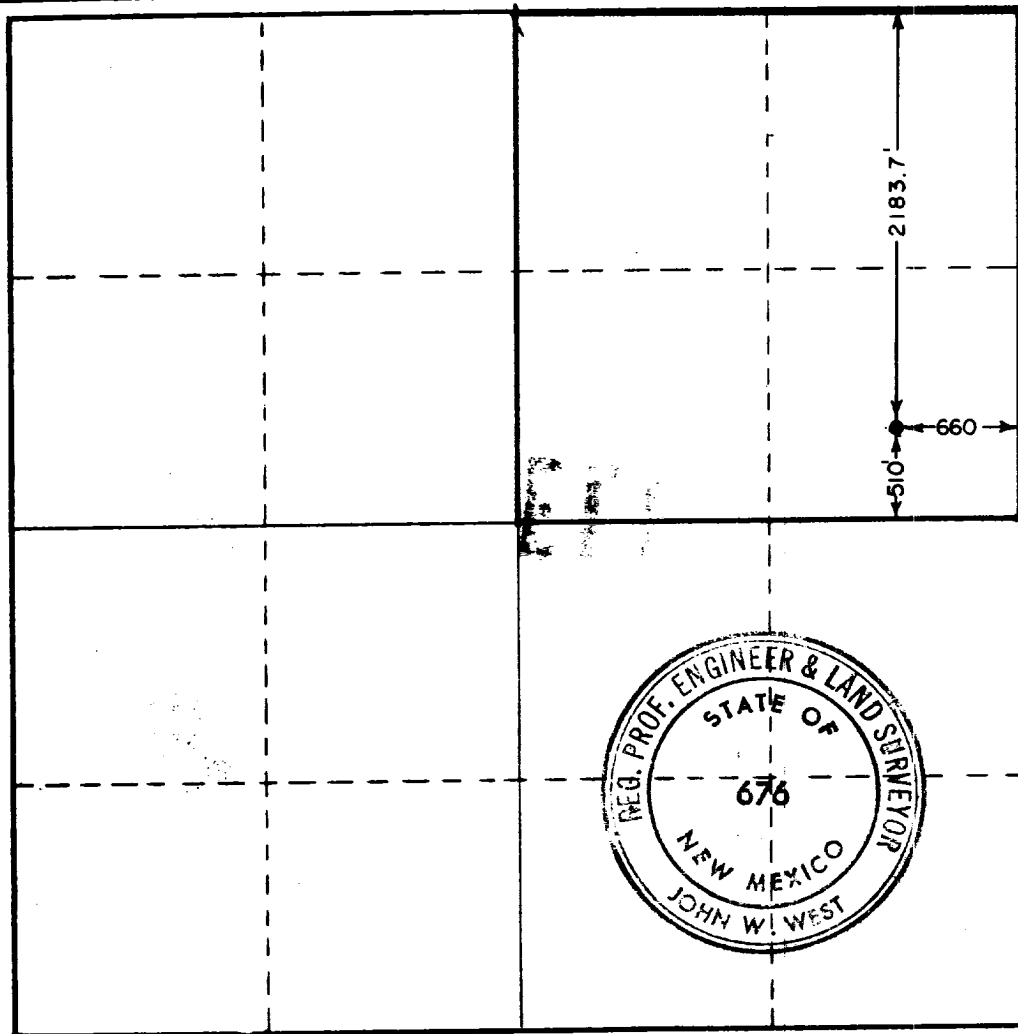
Operator J. C. BARNES OIL Co.			Lease LEA STATE			Well No. 2		
Unit Letter H	Section 5	Township 17 SOUTH	Range 34 EAST	County LEA				
Actual Footage Location of Well: 2183.7 feet from the NORTH line and 660 feet from the EAST line								
Ground Level Elev. 4106.8	Producing Formation			Pool	Dedicated Acreage: Acres			

1. Outline the acreage dedicated to the subject well by colored pencil or hachure marks on the plat below.
2. If more than one lease is dedicated to the well, outline each and identify the ownership thereof (both as to working interest and royalty).
3. If more than one lease of different ownership is dedicated to the well, have the interests of all owners been consolidated by communitization, unitization, force-pooling, etc?

Yes No If answer is "yes," type of consolidation _____

If answer is "no," list the owners and tract descriptions which have actually been consolidated. (Use reverse side of this form if necessary.) _____

No allowable will be assigned to the well until all interests have been consolidated (by communitization, unitization, forced-pooling, or otherwise) or until a non-standard unit, eliminating such interests, has been approved by the Commission.



CERTIFICATION

I hereby certify that the information contained herein is true and complete to the best of my knowledge and belief.

Name *J. C. Barnes*
 Position *Production Acct.*
 Company *J. C. Barnes Oil Co*
 Date *2-23-71*

I hereby certify that the well location shown on this plat was plotted from field notes of actual surveys made by me or under my supervision, and that the same is true and correct to the best of my knowledge and belief.

Date Surveyed
FEBRUARY 18, 1971
 Registered Professional Engineer
 and/or Land Surveyor

John W. West
 Certificate No. **676**

113

RECEIVED

FEB 10 1971
OIL CONSERVATION COMM.
1000

RECEIVED

FEB 10 1971
OIL CONSERVATION COMM.
1000