

**NEW MEXICO OIL CONSERVATION COMMISSION
WELL LOCATION AND ACREAGE DEDICATION PLAT**

Form C-10.
Supercedes C-12B
Revised 1-1-65

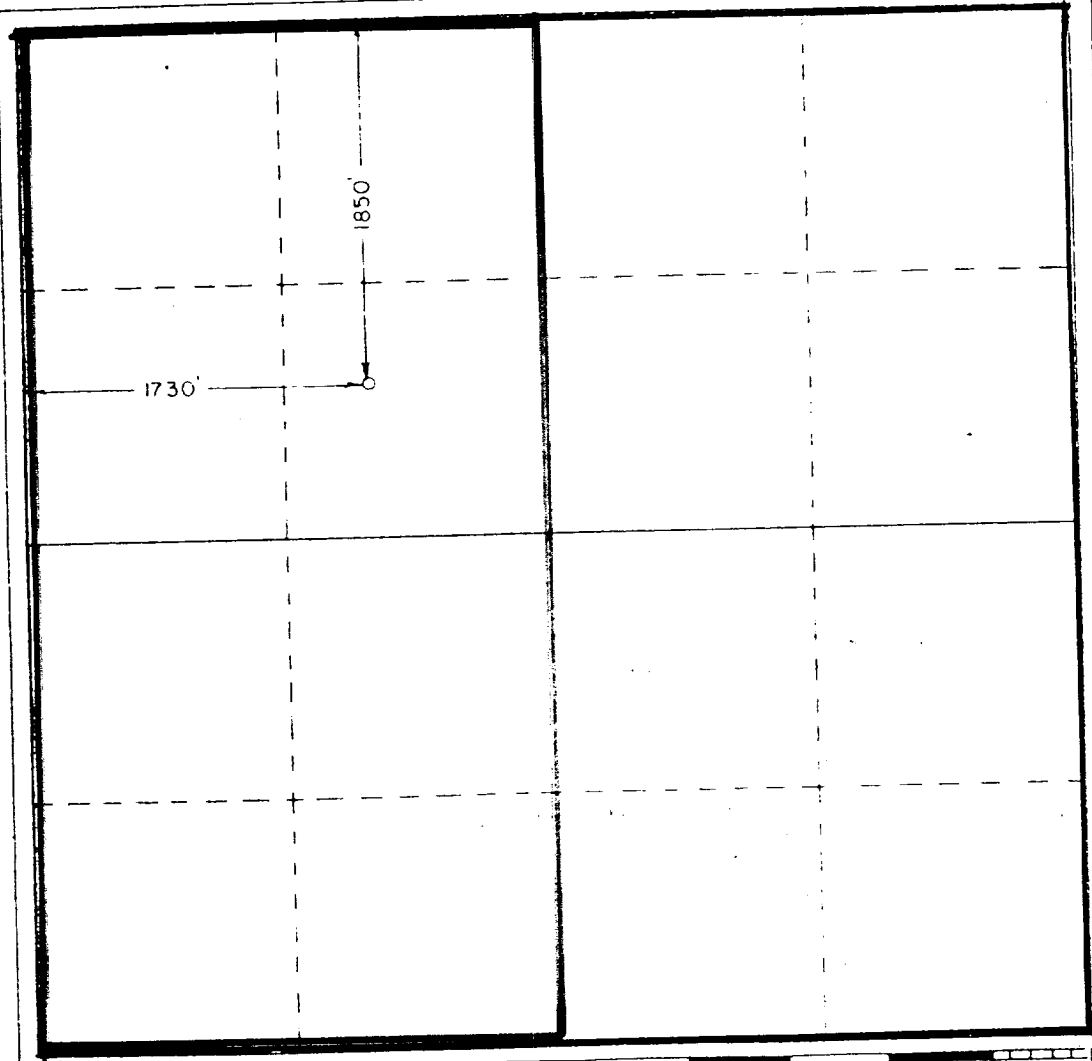
All distances must be from the outer boundaries of the Section

Operator Petroleum Development Corp.			Lessee Sun McKay Fed.		Well No. 1
Section Letter F	Section 10	Range 19 South	Range 32 East	County Lea	
Actual Location of Well:					
1850 feet from the		North	Line and 1730 feet from the		West
Ground Level Elev 3657.9	Producing Formation Morrow		Designation UNDESIGNATED Lusk-Morrow		Dedicated Acreage 320

- 1 Outline the acreage dedicated to the subject well by colored pencil or hatchure marks on the plat below.
 - 2 If more than one lease is dedicated to the well, outline each and identify the ownership thereof (both as to working interest and royalty)
 - 3 If more than one lease of different ownership is dedicated to the well, have the interests of all owners been consolidated by communitization, unitization, force-pooling, etc?
- ☐ Yes ☐ No If answer is "yes," type of consolidation _____

If answer is "no," list the owners and tract descriptions which have actually been consolidated. (Use reverse side of this form if necessary.) _____

No allowable will be assigned to the well until all interests have been consolidated (by communitization, unitization, forced-pooling, or otherwise) or until a non-standard unit, eliminating such interests, has been approved by the Commission.



CERTIFICATION

I hereby certify that the information contained herein is true and complete to the best of my knowledge and belief

Charles W. Sanders
Name **Charles W. Sanders**
Position **Vice President**

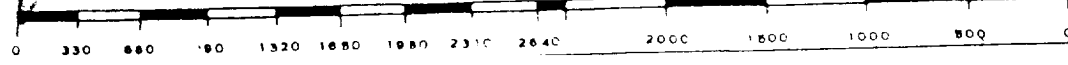
Petroleum Development
Company

9/19/77
Date

I hereby certify that the shown on this plat was plotted from notes of actual surveys under my supervision, and is true and correct to knowledge and belief.

Date Surveyed **Sept**
Registered Professional
and/or Land Surveyor

John H.
Certificate No.



RECEIVED

MAR 6 1978

OIL CONSERVATION COMM.
HOBBBS, N. M.