

NO. OF COPIES RECEIVED	
DISTRIBUTION	
SANTA FE	
FILE	
U.S.G.S.	
LAND OFFICE	
OPERATOR	

NEW MEXICO OIL CONSERVATION COMMISSION

Form C-101  
Revised 1-1-65

5A. Indicate Type of Lease  
STATE  FEE

5. State Oil & Gas Lease No.  
B-10784

APPLICATION FOR PERMIT TO DRILL, DEEPEN, OR PLUG BACK

1a. Type of Work  
b. Type of Well DRILL  DEEPEN  PLUG BACK   
OIL WELL  GAS WELL  OTHER  SINGLE ZONE  MULTIPLE ZONE

2. Name of Operator  
Amoco Production Company

3. Address of Operator  
P. O. Drawer "A", Levelland, TX 79336

4. Location of Well UNIT LETTER E LOCATED 1768 FEET FROM THE North LINE  
AND 990 FEET FROM THE West LINE OF SEC. 3 TWP. 18-S RGE. 34-E NADP

7. Unit Agreement Name  
8. Farm or Lease Name  
State "EX"  
9. Well No.  
1  
10. Field and Pool, or Wildcat  
Vacuum Grayburg San And  
11. County  
Lea  
12. Proposed Depth  
4750  
13. Formation  
Grayburg  
San Andres  
14. Rotary or C.R.  
Rotary  
15. Elevations (Show whether DF, RL, etc.)  
4029.7  
16. Kind & Status Plug Bond  
Blanket-On File  
17. Drilling Contractor  
NA  
18. Approx. Date Work will start  
4-24-78

23. PROPOSED CASING AND CEMENT PROGRAM

SIZE OF HOLE	SIZE OF CASING	WEIGHT PER FOOT	SETTING DEPTH	SACKS OF CEMENT	EST. TOP
12-1/4"	8-5/8"	24#	500'	Circulate	Surface
7-7/8"	5-1/2"	15.5#-17#	4750'	Circulate	Surface

Propose to drill and equip well in the Grayburg San Andres Formation. After reaching TD logs will be run and evaluated; perforate and stimulate as necessary in attempting commercial production.

Mud Program: 0' - 500' - Native mud and fresh water.  
500' - 4750' - Commercial mud and cut brine water to maintain good hole conditions.

IN ABOVE SPACE DESCRIBE PROPOSED PROGRAM; IF PROPOSAL IS TO DEEPEN OR PLUG BACK, GIVE DATA ON PRESENT PRODUCTIVE ZONE AND PROPOSED NEW PRODUCTIVE ZONE. GIVE BLOWOUT PREVENTER PROGRAM, IF ANY.

I hereby certify that the information above is true and complete to the best of my knowledge and belief.

Signed Ray W. Cox Title Administrative Supervisor Date April 17, 1978

(This space for State Use)

APPROVED BY [Signature] TITLE SUPERVISOR DISTRICT 1 DATE \_\_\_\_\_

CONDITIONS OF APPROVAL, IF ANY:

0 + 4 - NMOCC-H, 1-Div. 1-Susp. 1-RC

NEW MEXICO OIL CONSERVATION COMMISSION  
WELL LOCATION AND ACREAGE DEDICATION PLAT

Form C-102  
Supersedes C-128  
Effective 1-1-65

All distances must be from the outer boundaries of the Section

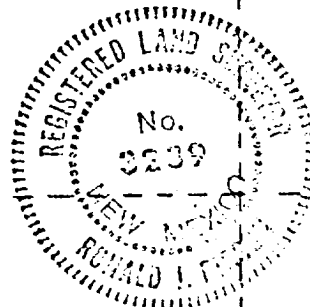
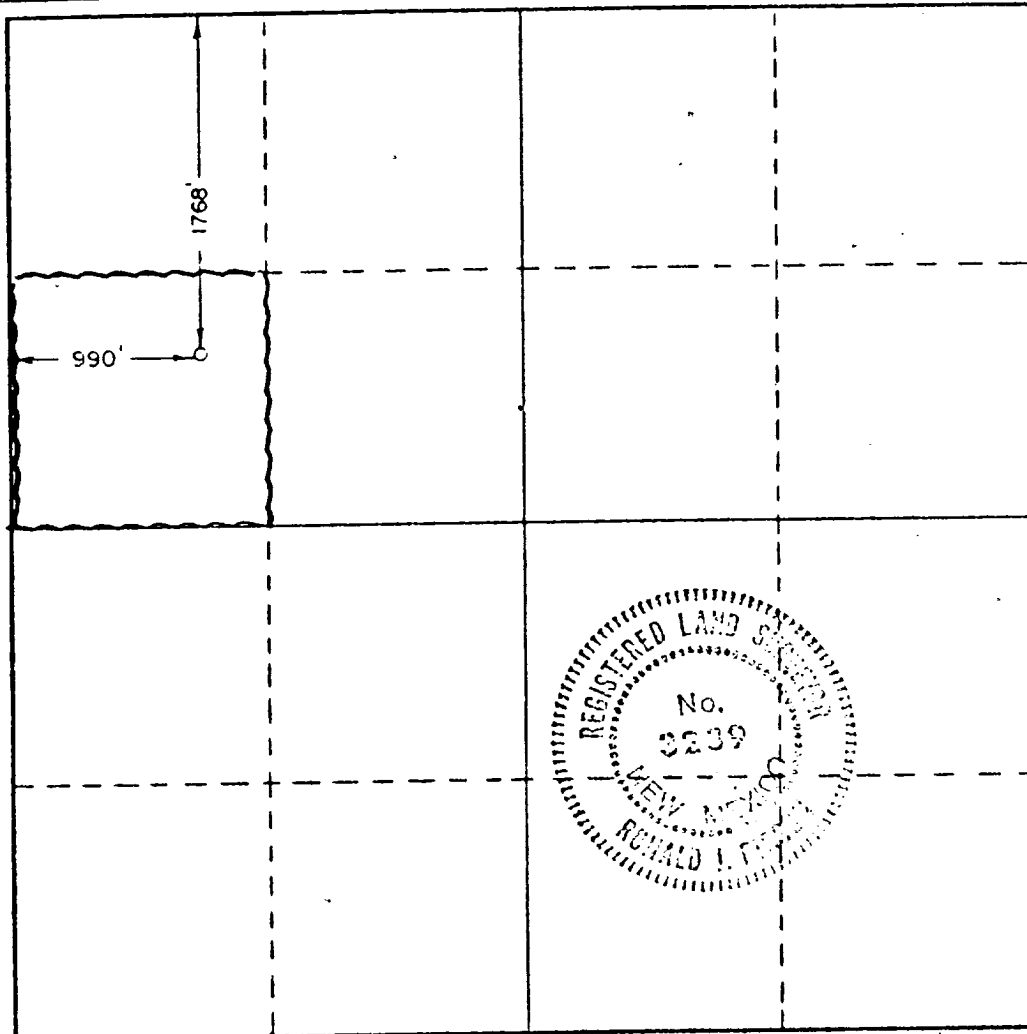
Operator <b>Amoco Production Co.</b>		Lease <b>State EX</b>		Well No. <b>1</b>
Unit Letter <b>E</b>	Section <b>3</b>	Township <b>18 South</b>	Range <b>34 East</b>	County <b>Lea</b>
Actual Footage Location of Well: <b>1768</b> feet from the <b>North</b> line and <b>990</b> feet from the <b>West</b> line				
Ground Level Elev. <b>4029.7</b>	Producing Formation <b>GRAYBURG SAN ANTOES</b>	Pool <b>VACUUM GRAYBURG SAN ANTOES</b>	Dedicated Acreage: <b>40</b> Acres	

- Outline the acreage dedicated to the subject well by colored pencil or hachure marks on the plat below.
- If more than one lease is dedicated to the well, outline each and identify the ownership thereof (both as to working interest and royalty).
- If more than one lease of different ownership is dedicated to the well, have the interests of all owners been consolidated by communitization, unitization, force-pooling, etc?

Yes  No If answer is "yes," type of consolidation \_\_\_\_\_

If answer is "no," list the owners and tract descriptions which have actually been consolidated. (Use reverse side of this form if necessary.) \_\_\_\_\_

No allowable will be assigned to the well until all interests have been consolidated (by communitization, unitization, forced-pooling, or otherwise) or until a non-standard unit, eliminating such interests, has been approved by the Commission.



**CERTIFICATION**

I hereby certify that the information contained herein is true and complete to the best of my knowledge and belief.

Name Ray W. Cox

Position Administrative Supervisor

Company AMOCO PRODUCTION COMPANY

Date 4-17-78

I hereby certify that the well location shown on this plat was plotted from field notes of actual surveys made by me or under my supervision, and that the same is true and correct to the best of my knowledge and belief.

Date Surveyed 3/29/78

Registered Professional Engineer and/or Land Surveyor  
Ronald J. Eidson

Certificate No. John W. West 676  
Ronald J. Eidson 3239

APPENDIX "B"  
STANDARD 2000 PSI W.P. BOP STACK

1. BLOW-OUT PREVENTERS MAY BE MANUAL OPERATED.
2. ALL EQUIPMENT MUST BE IN GOOD CONDITION, 2,000 PSI W.P. (4,000 PSI TEST) MINIMUM.
3. BELL NIPPLE ABOVE BLOW-OUT PREVENTER SHALL BE SAME SIZE AS CASING BEING DRILLED THROUGH.
4. RELAY COCK TO BE INSTALLED ON KILLY.
5. FULL CASING SAFETY VALVE 2,000 PSI W.P. (4,000 PSI TEST) MINIMUM, MUST BE AVAILABLE ON FLS FLOOR AT ALL TIMES WITH FIBER CONNECTION OR SURE TO FIT ANY TOOL JOINT IN STRIPS.
6. SPOOL OR CROSS MAY BE ELIMINATED IF CONNECTIONS ARE AVAILABLE IN THE LOWER PART OF THE BLOW-OUT PREVENTER BODY.
7. DOUBLE OR SINGLE SIZED TYPE PREVENTERS MAY BE USED IN LIEU OF TWO SINGLE PREVENTERS.
8. BOP RAMS TO BE INSTALLED AS FOLLOWS:
 

TOP PREVENTER	-	DRILL PIPE OR CASING RAMS
BOTTOM PREVENTER	-	BLIND RAMS
- \*WOOD BLOCK SUPPL. MAY REVERSE LOCATION OF RAMS.
9. EXTENSIONS AND HAND WHEELS TO BE INSTALLED AND BRACED AT ALL TIMES.
10. REINFORCED WELDS MAY BE GATE OR PLUG METAL TO METAL SEAL 2" MINIMUM.

