

STATE OF NEW MEXICO
ENERGY AND MINERALS DEPARTMENT

OIL CONSERVATION DIVISION
P. O. BOX 2088
SANTA FE, NEW MEXICO 87501

30-125-28724

Form C-101
Revised 10-1-78

NO. OF COPIES RECEIVED	
DISTRIBUTION	
SANTA FE	
FILE	
U.S.G.S.	
LAND OFFICE	
OPERATOR	

5A. Indicate Type of Lease
STATE ☒ FEE ☐

5. State Oil & Gas Lease No.
B-1520-1

APPLICATION FOR PERMIT TO DRILL, DEEPEN, OR PLUG BACK

1a. Type of Work b. Type of Well OIL WELL <input checked="" type="checkbox"/> GAS WELL <input type="checkbox"/> OTHER <input type="checkbox"/> SINGLE ZONE <input checked="" type="checkbox"/> MULTIPLE ZONE <input type="checkbox"/>		7. Unit Agreement Name North Vacuum Abo Unit	
2. Name of Operator MOBIL PRODUCING TX. & N.M. INC.		8. Farm or Lease Name	
3. Address of Operator Nine Greenway Plaza, Suite 2700 Houston, TX 77046		9. Well No. 254	
4. Location of Well UNIT LETTER I LOCATED 746 FEET FROM THE East LINE AND 1980 FEET FROM THE South LINE OF SEC. 13 TWP. 17S RGE. 34E NMPM		10. Field and Pool, or Wildcat North Vacuum Abo	
21. Elevations (Show whether DF, RT, etc.) 4015'		12. County Lea	
21A. Kind & Status Plug. Bond on file		19. Proposed Depth 9100'	
21B. Drilling Contractor unknown		19A. Formation Abo	
22. Approx. Date Work will start as soon as possible		20. Rotary or C.T. Rotary	

PROPOSED CASING AND CEMENT PROGRAM

SIZE OF HOLE	SIZE OF CASING	WEIGHT PER FOOT	SETTING DEPTH	SACKS OF CEMENT	EST. TOP
17 1/2"	13-3/8"	48.0# H-40	0-400'	circulate	surface
12 1/4"	8-5/8"	28.0# S-80	0-5000'	circulate	surface
7-7/8"	5 1/2" -Liner	15.5# K-55 17.0# N-80	4800-7300' 7300' - TD	circulate	surface

Blowout Preventor Program

Casing String	Equipment Size & API Series	No. & Type	Test Pressure PSI
Surface	13-5/8" x 3000#	1 MG & 1 PR 1 MG & 2 PR & Rotary Head	3000

APPROVAL FOR 180 DAYS
PERIOD EXPIRES 7/3/84
UNLESS DRILLING UNDERWAY

IN ABOVE SPACE DESCRIBE PROPOSED PROGRAM: IF PROPOSAL IS TO DEEPEN OR PLUG BACK, GIVE DATA ON PRESENT PRODUCTIVE ZONE AND PROPOSED NEW PRODUCTIVE ZONE. GIVE BLOWOUT PREVENTOR PROGRAM, IF ANY.

I hereby certify that the information above is true and complete to the best of my knowledge and belief.

Signed A. D. Bond A. D. Bond Title Regulatory Technician Supervisor Date April 27, 1984

(This space for State Use)

ORIGINAL SIGNED BY JERRY SEXTON

APPROVED BY DISTRICT 1 SUPERVISOR TITLE DATE MAY 3 1984

CONDITIONS OF APPROVAL, IF ANY:

OIL CONSERVATION DIVISION

STATE OF NEW MEXICO
ENERGY AND MINERALS DEPARTMENTP. O. BOX 2088
SANTA FE, NEW MEXICO 87501Form C-102
Revised 10-1-78

All distances must be from the outer boundaries of the Section.

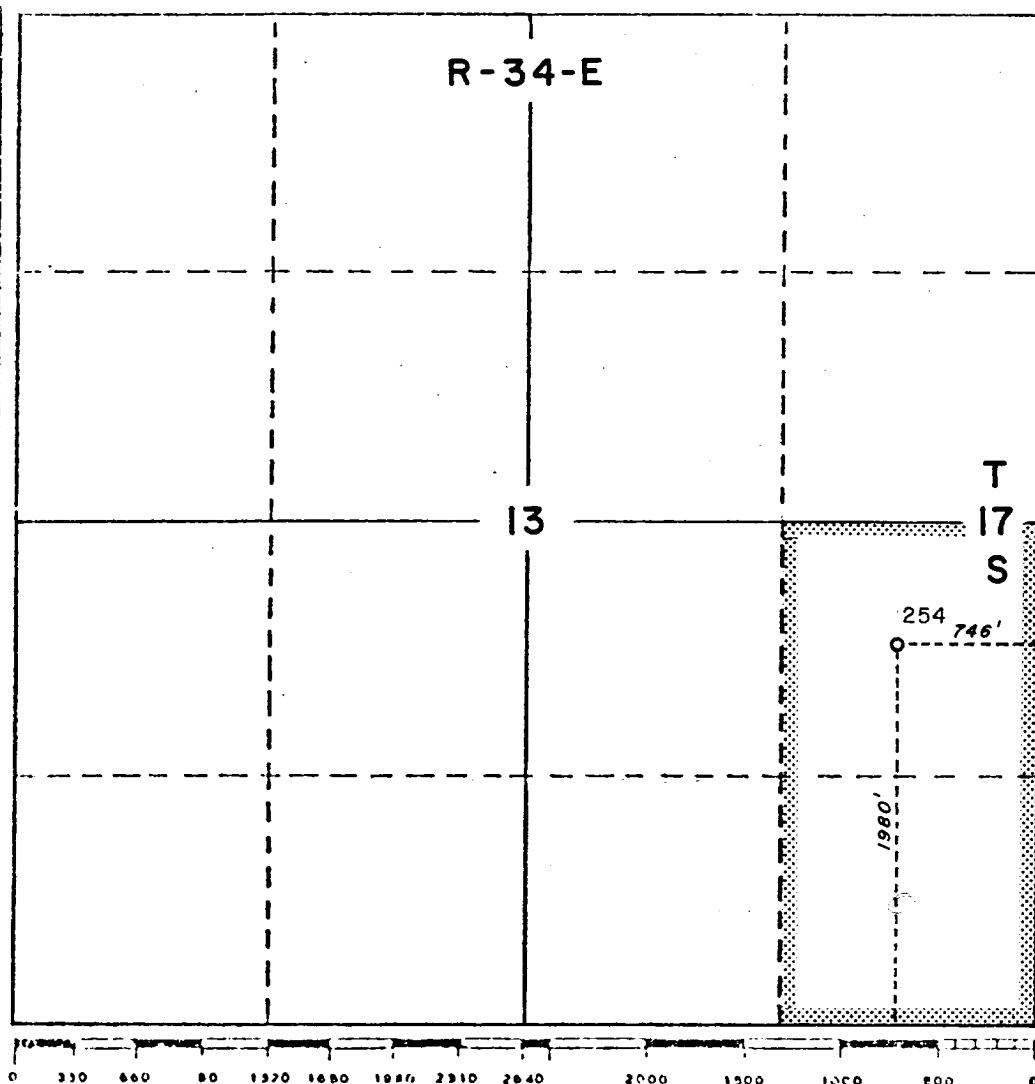
Operator MOBIL PRODUCING TX. & N.M. INC.			Lease North Vacuum Abo Unit		Well No. 254
Unit Letter I	Section 13	Township 17S	Range 34E	County Lea	
Actual Postage Location of Well: 746 feet from the East line and 1980' feet from the South line					
Ground Level Elev. 4015'	Producing Formation Abo	Pool Vacuum North Abo	Dedicated Acreage: (2 wells) 80 Acres		

1. Outline the acreage dedicated to the subject well by colored pencil or hatchure marks on the plat below.
2. If more than one lease is dedicated to the well, outline each and identify the ownership thereof (both as to working interest and royalty).
3. If more than one lease of different ownership is dedicated to the well, have the interests of all owners been consolidated by communitization, unitization, force-pooling, etc?

☒ Yes ☐ No If answer is "yes," type of consolidation Unitized

If answer is "no," list the owners and tract descriptions which have actually been consolidated. (Use reverse side of this form if necessary.) _____

No allowable will be assigned to the well until all interests have been consolidated (by communitization, unitization, forced-pooling, or otherwise) or until a non-standard unit, eliminating such interests, has been approved by the Division.



CERTIFICATION

I hereby certify that the information contained herein is true and complete to the best of my knowledge and belief.

Name

A. D. Bond

Position

Regulatory
Technician Supervisor

Company

MOBIL PRODUCING TX. & N.M. INC.

Date

April 27, 1984

I hereby certify that the well location shown on this plat was plotted from field notes of actual surveys made by me or under my supervision and that the same is true and correct to the best of my knowledge and belief.

Date Surveyed

4-18-84

Registered Professional Engineer
and/or Land Surveyor

H. A. Carson, Jr.

Certificate No.

5063

RECEIVED
MAY 2 1984
G.C.D.
HOEBS OFFICE

