

DISTRICT I
P.O. Box 1980, Hobbs, NM 88241-1980

DISTRICT II
P.O. Box Drawer DD, Artesia, NM 88211-0719

DISTRICT III
1000 Rio Brazos Rd., Aztec, NM 87410

DISTRICT IV
P.O. Box 2088, Santa Fe, NM 87504-2088

State of New Mexico
Energy, Minerals and Natural Resources Department

OIL CONSERVATION DIVISION

P.O. Box 2088
Santa Fe, New Mexico 87504-2088

Form C-101
Revised February 10, 1994
Instructions on back
Submit to Appropriate District Office
State Lease - 6 Copies
Fee Lease - 5 Copies

☐ AMENDED REPORT

APPLICATION FOR PERMIT TO DRILL, RE-ENTER, DEEPEN, PLUGBACK, OR ADD A ZONE

¹ Operator Name and Address TEXACO EXPLORATION & PRODUCTION INC. 205 E. Bender, HOBBS, NM 88240		² OGRID Number 022351
⁴ Property Code 11051 011048	⁵ Property Name NEW MEXICO R STATE NCT-3	³ API Number 30-025-32004
		⁶ Well No. 27

⁷ Surface Location									
UI or lot no.	Section	Township	Range	Lot.Idn	Feet From The	North/South Line	Feet From The	East/West Line	County
O	1	18-S	34-E		660	SOUTH	1650	EAST	LEA

⁸ Proposed Bottom Hole Location If Different From Surface									
UI or lot no.	Section	Township	Range	Lot.Idn	Feet From The	North/South Line	Feet From The	East/West Line	County
⁹ Proposed Pool 1 VACUUM ABO REEF					¹⁰ Proposed Pool 2				

¹¹ Work Type Code D	¹² WellType Code O	¹³ Rotary or C.T. R	¹⁴ Lease Type Code S	¹⁵ Ground Level Elevation GR-3987', KB-4001'
¹⁶ Multiple No	¹⁷ Proposed Depth 8900'	¹⁸ Formation ABO	¹⁹ Contractor PRIDE	²⁰ Spud Date 3/1/97

²¹ Proposed Casing and Cement Program					
SIZE OF HOLE	SIZE OF CASING	WEIGHT PER FOOT	SETTING DEPTH	SACKS OF CEMENT	EST. TOP
11"	8 5/8"	24#	1470'	CL-C 600 SX, CIR 32	
7 7/8"	5 1/2"	15.5 & 17#	8100'	CL-H 2400 SX, CIR 217	

²² Describe the proposed program. If this application is to DEEPEN or PLUG BACK give the data on the present productive zone and proposed new productive zone. Describe the blowout prevention program, if any. Use additional sheets if necessary.

TEPI proposes to deepen this well to the Vacuum Abo Reef pool. It is currently completed in the Vacuum Drinkard pool & is Temporarily Abandoned.

1. MIRU. Sqz Drinkard perms w/ 200 sx Class H cmt.
2. TIH w/ 4 3/4" bit & drill to 8900'. Run open hole log.
3. Run 4" 9.5# liner (1100') & set @ 8900'. Cement liner w/ 65 sx Class H cmt.
4. Drill out cement. Perforate Vacuum Abo Reef pay & stimulate based on open hole log.
5. Run production equipment & place well on production in the Vacuum Abo Reef pool.

Permit Expires 1 Year From Approval
Date Unless Drilling Underway
Deepen

²³ I hereby certify that the rules and regulations of the Oil Conservation Division have been complied with and that the information given above is true and complete to the best of my knowledge and belief.

Signature 

Printed Name Monte C. Duncan

Title Engr Asst

Date 2/19/97

Telephone 397-0418

OIL CONSERVATION DIVISION

Approved By: 

Title:

Approval Date: FEB 21 1997

Expiration Date:

Conditions of Approval:

Attached ☐

DISTRICT I

P.O. Box 1980, Hobbs, NM 88241-1980

DISTRICT II

P.O. Box Drawer DD, Artesia, NM 88211-0719

DISTRICT III

1000 Rio Brazos Rd., Aztec, NM 87410

DISTRICT IV

P.O. Box 2088, Santa Fe, NM 87504-2088

State of New Mexico

Energy, Minerals and Natural Resources Department

Form C-102

Revised February 10, 1994

Instructions on back

Submit to Appropriate District Office

State Lease - 4 Copies

Fee Lease - 3 Copies

☐ AMENDED REPORT

OIL CONSERVATION DIVISION

P.O. Box 2088

Santa Fe, New Mexico 87504-2088

WELL LOCATION AND ACREAGE DEDICATION PLAT

¹ API Number 30-025-32004	² Pool Code 61780	³ Pool Name VACUUM ABO REEF
⁴ Property Code 11052 041048	⁵ Property Name NEW MEXICO R STATE NCT-3	
⁷ OGRID Number 022351	⁸ Operator Name TEXACO EXPLORATION & PRODUCTION INC.	⁶ Well No. 27
		⁹ Elevation GR-3987', KB-4001'

¹⁰ Surface Location

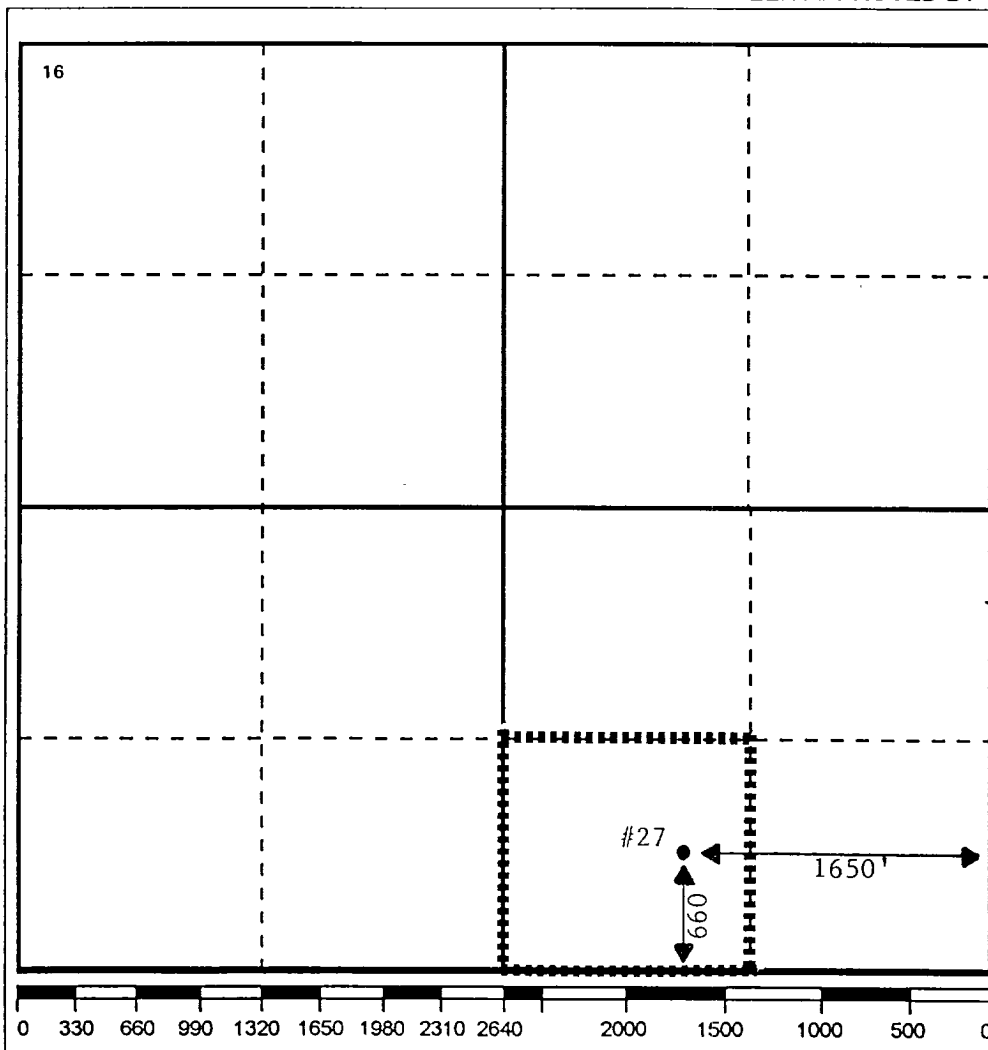
UI or lot no.	Section	Township	Range	Lot.Idn	Feet From The	North/South Line	Feet From The	East/West Line	County
O	1	18-S	34-E		660	SOUTH	1650	EAST	LEA

¹¹ Bottom Hole Location If Different From Surface

UI or lot no.	Section	Township	Range	Lot.Idn	Feet From The	North/South Line	Feet From The	East/West Line	County

¹² Dedicated Acres 40	¹³ Joint or Infill No	¹⁴ Consolidation Code	¹⁵ Order No.
-------------------------------------	-------------------------------------	----------------------------------	-------------------------

NO ALLOWABLE WILL BE ASSIGNED TO THIS COMPLETION UNTIL ALL INTERESTS HAVE BEEN CONSOLIDATED
OR A NON-STANDARD UNIT HAS BEEN APPROVED BY THE DIVISION



17 OPERATOR CERTIFICATION

I hereby certify that the information contained herein is true and complete to the best of my knowledge and belief

Signature

Printed Name

Monte C. Duncan

Position

Engr Asst

Date

2/19/97

18 SURVEYOR CERTIFICATION

I hereby certify that the well location shown on this plat was plotted from field notes of actual surveys made by me or under my supervision, and that the same is true and correct to the best of my knowledge and belief.

Date Surveyed

Signature & Seal of

Professional Surveyor

Certificate No.