

UNITED STATES  
DEPARTMENT OF THE INTERIOR  
BUREAU OF LAND MANAGEMENT

N.M. Oil Cons. Division

SUBMIT IN DUPLICATE

1625 N. Ranch Dr.  
Hobbs, NM 88240

FORM APPROVED  
OMB NO. 1004-0137  
EFFECTIVE DATES: February 28, 1995

5. LEASE DESIGNATION AND SERIAL NO.

NM-01088

WELL COMPLETION OR RECOMPLETION REPORT AND LOG\*

1a. TYPE OF WELL: OIL WELL GAS WELL X DRY Other

6. IF INDIAN, ALLOTTEE OR TRIBE NAME

7. UNIT AGREEMENT NAME

LUSK DEEP UNIT

8. FARM OR LEASE NAME, WELL NO.

LUSK DEEP UNIT "A" #19

9. API WELL NO.

30-025-35244 0052

10. FIELD AND POOL, OR WILDCAT

LUSK STRAWN

11. SEC., T., R., M., OR BLOCK AND SURVEY OR AREA

SEC. 17-T19S-R32E

12. COUNTY OR PARISH

LEA

13. STATE

NM

2. NAME OF OPERATOR  
MARBOB ENERGY CORPORATION

3. ADDRESS AND TELEPHONE NO.  
P.O. BOX 227, ARTESIA, NM 88210

4. LOCATION OF WELL (Report location clearly and in accordance with any State requirements)\*

At surface

660 FSL 1650 FWL

At top prod. interval reported below

SAME

At total depth

SAME

14. PERMIT NO.

DATE ISSUED

15. DATE SPURRED 01/01/01  
16. DATE T.D. REACHED 02/13/01  
17. DATE COMPL. (Ready to prod.) ~~04/20/01~~ 10/08/2001

18. ELEVATIONS (DF, RKB, RT, GE, ETC.)\*  
3584' GR

19. ELEV. CASINGHEAD

20. TOTAL DEPTH, MD & TVD 12754'  
21. PLUG, BACK T.D., MD & TVD 12275'

22. IF MULTIPLE COMPL., HOW MANY\*

23. INTERVALS DRILLED BY

ROTARY TOOLS

0-12754'

CABLE TOOLS

24. PRODUCING INTERVAL(S), OF THIS COMPLETION-TOP, BOTTOM, NAME (MD AND TVD)\*

11358' - 11410' STRAWN

25. WAS DIRECTIONAL SURVEY MADE

No

26. TYPE ELECTRIC AND OTHER LOGS RUN  
DLL, NEUTRON-DENSITY

27. WAS WELL CORED

No

28. CASING RECORD (Report all strings set in well)

CASING SIZE/GRADE	WEIGHT, LB./FT.	DEPTH SET (MD)	HOLE SIZE	TOP OF CEMENT	CEMENTING RECORD	AMOUNT PULLED
13 3/8", H-40	48#	829'	17 1/2"	CMTD W/ 750 SX, CIRC 150 SX		NONE
8 5/8", K-55	32#	4362'	12 1/4"	CMTD W/ 1185 SX, CIRC 150 SX		NONE
5 1/2", M95-110	17#	12754'	7 7/8"	CMTD W/ 2650, TOC 4350'		NONE

29. LINER RECORD

SIZE TOP (MD) BOTTOM (MD) SACKS CEMENT\* SCREEN (MD)

30. TUBING RECORD

SIZE DEPTH SET (MD) PACKER SET (MD)  
2 3/8" 12250'

31. PERFORATION RECORD (Interval, size and number)

12545' - 12576' (40) 12354' - 12457' (14)  
12353' - 12413' (124) 12369' - 12431' (124)  
12353' - 12371' 12292' - 12300' (32)  
11358' - 11410' (20)

32. ACID, SHOT, FRACTURE, CEMENT SQUEEZE, ETC.

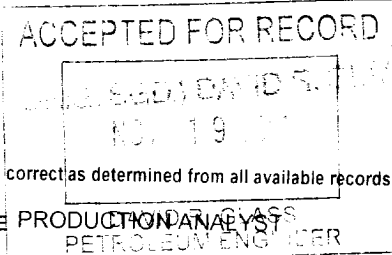
DEPTH INTERVAL (MD) AMOUNT AND KIND OF MATERIAL USED  
12292' - 12300' ACDZ W/ 1000 GAL 7 1/2% HCL ACID  
11358' - 11410' ACDZ W/ 500 GAL 15% NEFE ACID

33. PRODUCTION

DATE FIRST PRODUCTION 10/08/01 PRODUCTION METHOD (Flowing, gas lift, pumping--size and type of pump) PUMPING WELL STATUS (Producing or shut-in) PROD

DATE OF TEST 10/09/01 HOURS TESTED 24 CHOKE SIZE 10/64" PROD'N FOR TEST PERIOD 17 OIL---BBL. 17 GAS---MCF. 18 WATER---BBL. 72 GAS-OIL RATIO

FLOW. TUBING PRESS. CASING PRESSURE CALCULATED 24-HOUR RATE OIL---BBL. GAS---MCF. WATER---BBL. OIL GRAVITY-API (CORR.)



TEST WITNESSED BY SHANE GRAY

34. DISPOSITION OF GAS (Sold, used for fuel, vented, etc.) SOLD

35. LIST OF ATTACHMENTS NONE

36. I hereby certify that the foregoing and attached information is complete and correct as determined from all available records

SIGNED Leana Tannon TITLE PRODUCTION ANALYST

PETROLEUM ENGINEER

DATE 11/14/01

\*(See Instructions and Spaces for Additional Data on Reverse Side)

37. SUMMARY OF POROUS ZONES: (State all important zones of porosity and contents thereof; cored intervals; and all drill-stem tests, including depth interval tested, cushion used, time tool open, flowing and shut-in pressures, and recoveries):

FORMATION	TOP	BOTTOM	DESCRIPTION, CONTENTS, ETC.
-----------	-----	--------	-----------------------------

38. GEOLOGICAL MARKERS

NAME	TOP	
	MEAS. DEPTH	TRUE VERT. DEPTH
RUSTLER	778'	
YATES	2584'	
DELAWARE	4476'	
BONE SPRINGS	7108'	
WOLFCAMP	10346'	
STRAWN	11220'	
ATOKA	11615'	
MORROW	12228'	

38. GEOLOGICAL MARKERS

NAME	TOP	
	MEAS. DEPTH	TRUE VERT. DEPTH

State of New Mexico

Energy, Minerals and Natural Resources Department

Form C-102

Revised February 10, 1994

Submit to Appropriate District Office

State Lease - 4 Copies

Fee Lease - 3 Copies

OIL CONSERVATION DIVISION

P.O. Box 2088

Santa Fe, New Mexico 87504-2088

AMENDED REPORT

WELL LOCATION AND ACREAGE DEDICATION PLAT

API Number 30-025-35244	Pool Code 41589	Pool Name LUSK STRAWN
Property Code 17817	Property Name LUSK DEEP UNIT "A"	Well Number 19
OGRID No. 14049	Operator Name MARBOB ENERGY CORPORATION	Elevation 3584

Surface Location

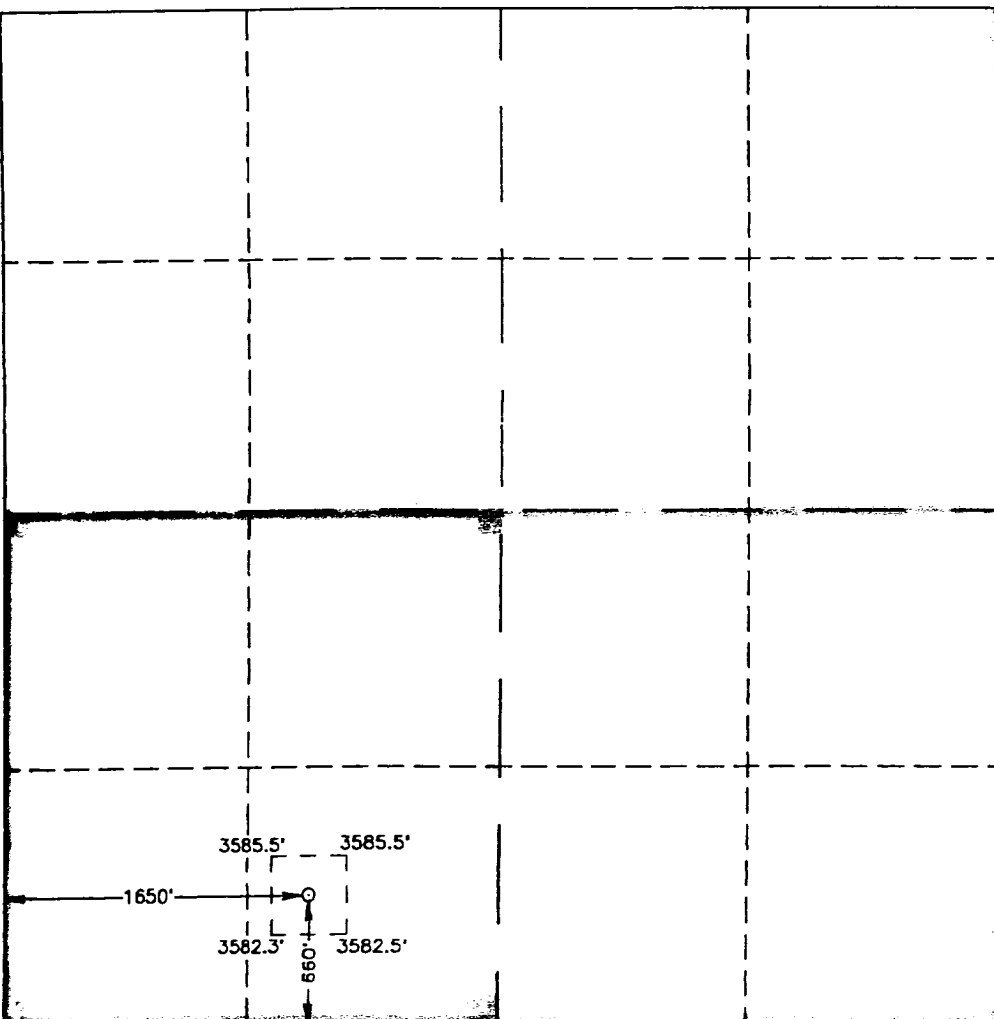
UL or lot No.	Section	Township	Range	Lot Idn	Feet from the	North/South line	Feet from the	East/West line	County
N	17	19 S	32 E		660	SOUTH	1650	WEST	LEA

Bottom Hole Location If Different From Surface

UL or lot No.	Section	Township	Range	Lot Idn	Feet from the	North/South line	Feet from the	East/West line	County

Dedicated Acres	Joint or Infill	Consolidation Code	Order No.
160			

NO ALLOWABLE WILL BE ASSIGNED TO THIS COMPLETION UNTIL ALL INTERESTS HAVE BEEN CONSOLIDATED OR A NON-STANDARD UNIT HAS BEEN APPROVED BY THE DIVISION



**OPERATOR CERTIFICATION**

I hereby certify the the information contained herein is true and complete to the best of my knowledge and belief.

*Diana J. Cannon*  
Signature

DIANA J. CANNON  
Printed Name

PRODUCTION ANALYST  
Title

DECEMBER 4, 2001  
Date

---

**SURVEYOR CERTIFICATION**

I hereby certify that the well location shown on this plat was plotted from field notes of actual surveys made by me or under my supervision, and that the same is true and correct to the best of my belief.

SEPTEMBER 29, 2000  
Date Surveyed

JLP

Signature & Seal of Professional Surveyor:  
*Ronald J. Eidson 10/02/00*

W.O. Num. 00-11-1194

Certificate No. RONALD J. EIDSON, 3239  
GARY G. EIDSON, 12641

R-6197