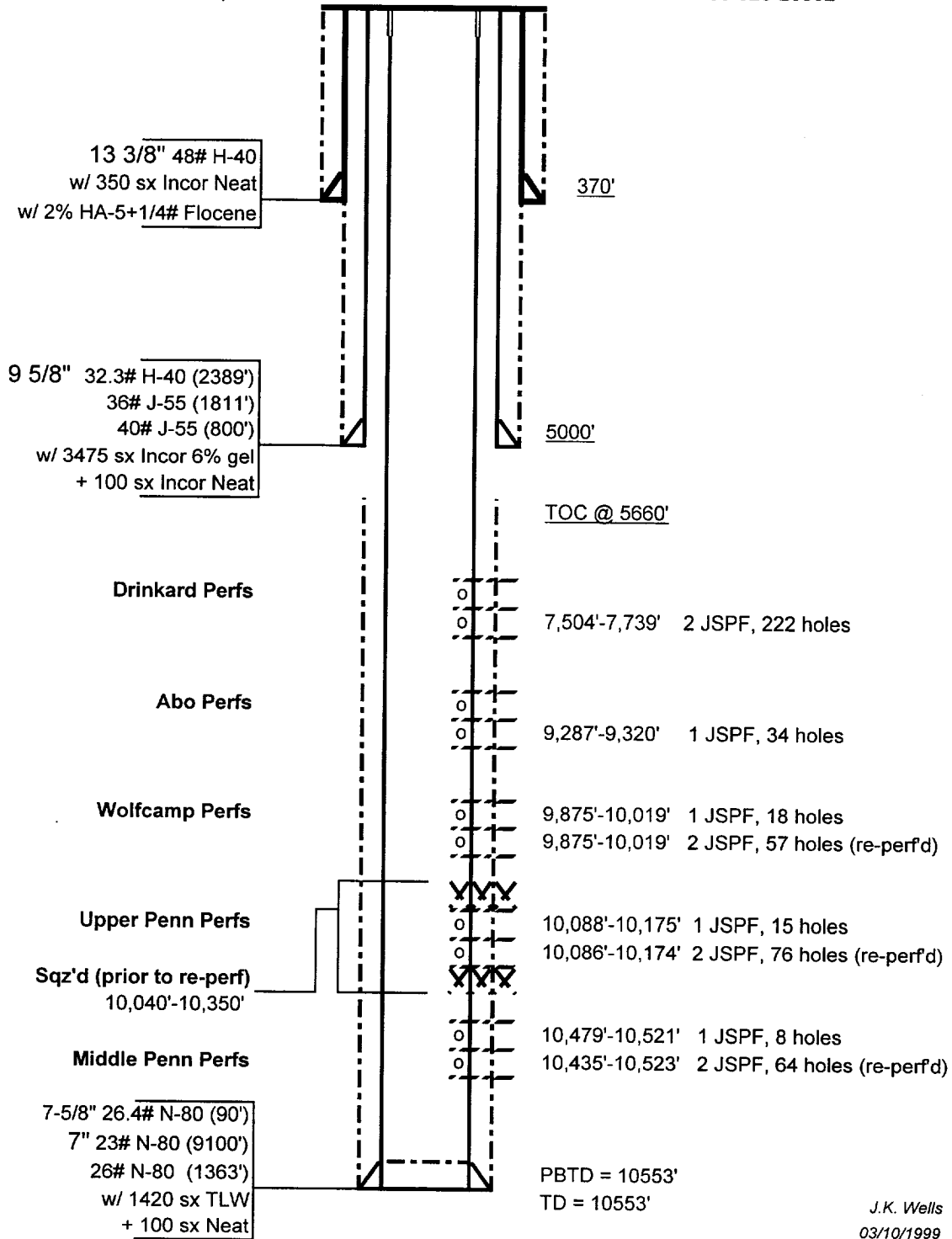


CURRENT CONFIGURATION (PRE-PLUGGED)

State DD #1
 Vacuum Field
 Lea County, NM
 (Vacuum Drinkard Pool)

T17S R35E
 Sec 31 Block D
 535' FWL & 510' FNL

KB: 3999'
 GL: 3987'
 Spud date: 10/64
 API # 30-025-20862



J.K. Wells
 03/10/1999