

**NEW MEXICO OIL CONSERVATION COMMISSION  
WELL LOCATION AND ACREAGE DEDICATION PLAT**

FORM C-128  
Revised 5/1/57

**SEE INSTRUCTIONS FOR COMPLETING THIS FORM ON THE REVERSE SIDE**

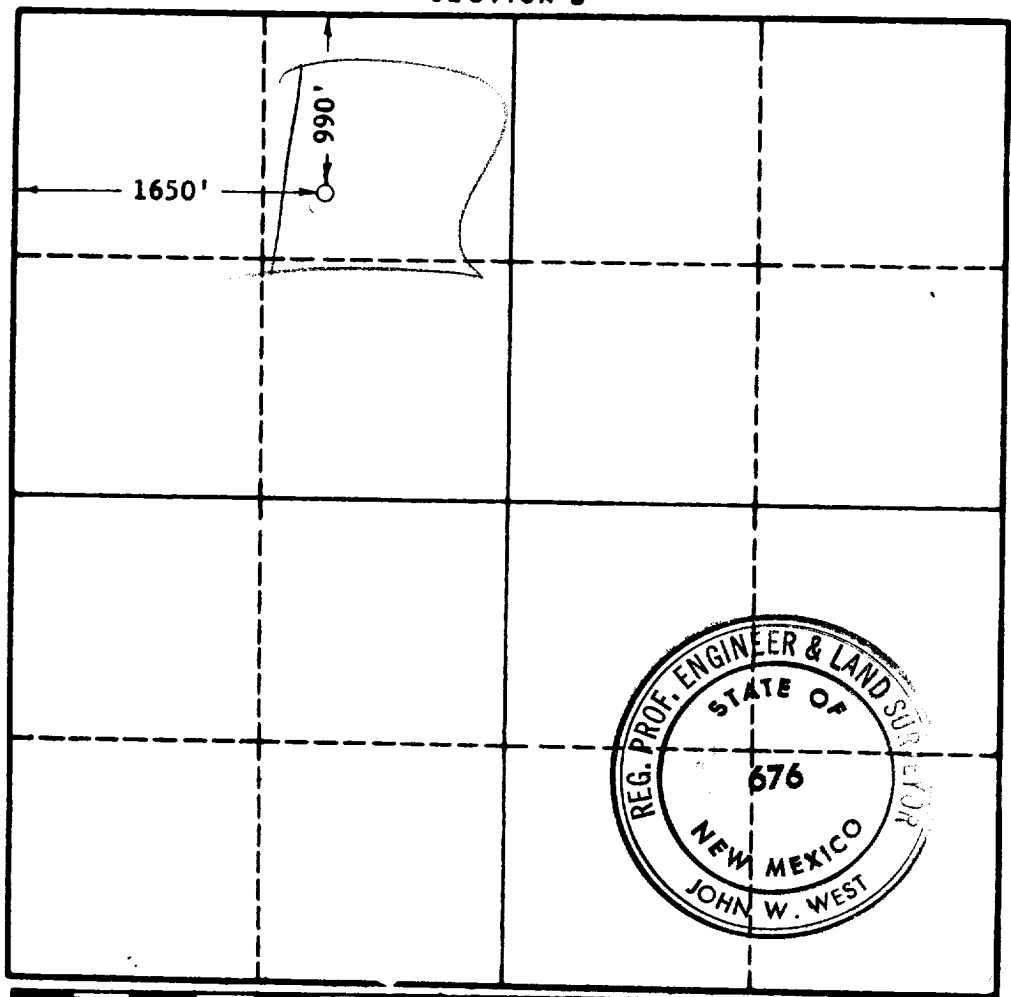
**SECTION A**

Operator <b>TEX STAR OIL &amp; GAS COMPANY</b>		Lease <b>TEXACO-HAMON "A"</b>		Well No. <b>2</b>
Unit Letter <b>C</b>	Section <b>24</b>	Township <b>19 SOUTH</b>	Range <b>35 EAST</b>	County <b>LEA</b>
Actual Footage Location of Well: 990 feet from the <b>NORTH</b> line and 1650 feet from the <b>WEST</b> line				
Ground Level Elev. <b>3716.5</b>	Producing Formation <b>QUEEN SAND</b>		Pool <b>PEARL QUEEN</b>	Dedicated Acreage: <b>40</b> Acres

1. Is the Operator the only owner in the dedicated acreage outlined on the plat below? YES  NO . ("Owner" means the person who has the right to drill into and to produce from any pool and to appropriate the production either for himself or for himself and another. (65-3-29 (e) NMSA 1935 Comp.)
2. If the answer to question one is "no," have the interests of all the owners been consolidated by communitization agreement or otherwise? YES  NO . If answer is "yes," Type of Consolidation \_\_\_\_\_
3. If the answer to question two is "no," list all the owners and their respective interests below:

Owner	Land Description

**SECTION B**



**CERTIFICATION**

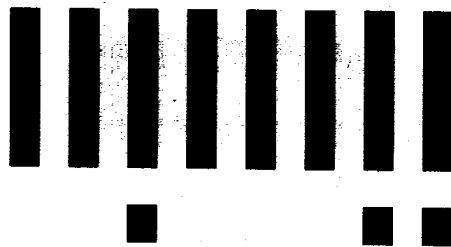
I hereby certify that the information in SECTION A above is true and complete to the best of my knowledge and belief.

Name <b>John W. West</b>
Position <b>AGENT</b>
Company <b>TEX STAR OIL &amp; GAS COMPANY</b>
Date <b>DECEMBER 15, 1964</b>

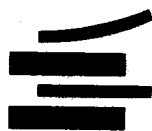
I hereby certify that the well location shown on the plat in SECTION B was plotted from field notes of actual surveys made by me or under my supervision, and that the same is true and correct to the best of my knowledge and belief.

Date Surveyed <b>DECEMBER 14, 1964</b>
Registered Professional Engineer and/or Land Surveyor, <b>JOHN W. WEST</b>
<b>John W. West</b>
Certificate No. <b>N.M. - P.E. &amp; L.S. NO. 676</b>





**LTR**



**Job separation sheet**

COUNTY	LEA	FIELD	Pearl-Queen	STATE	NM
OPR	TEX-STAR OIL & GAS CORPORATION				MAP
	2 Texaco-Hamon "A"				
	Sec. 24, T-19-S, R-35-E				CO-ORD
	990' fr N Line & 1650' fr W Line of Sec.				
	Spud 12-20-64				CLASS
	Comp 1-12-65				EL 3237
		FORMATION	DATUM	FORMATION	DATUM
CSG & SX - TUBING		LOG:			
		Anhy 1748			
8 5/8" 256' 250		Yates 3752			
4 1/2" 5098' 200		Queen 4538			
LOGS EL GR RA IND HC A					
		TD 5100', PBD 5061'			

IP Queen Perfs 4883-5041' Pmpd 43 BOPD + 2 BW. Pot. Based on 24 hr test, gravity 35.5, GOR 412.

Distribution limited and publication prohibited by subscribers' agreement.  
 Reproduction rights reserved by Williams & Lee Scouting Service, Inc.

CONT. Cactus Drlg. Co.	PROP DEPTH	5600'	TYPE
DATE			

F.R. 12-24-64  
 PD 5600' - Queen  
 Contractor - Cactus Drlg. Co.  
 1-4-65 TD 5100', WOC.  
 1-11-65 TD 5100', PBD 5061', pmpg load.  
 Perf @ 4883', 4886', 4897', 4901', 4903',  
 4941', 4979', 5011', 5029', 5041' W/1 SPI  
 Ac. 850 gals.  
 Frac 38,000 gals wtr + 30,000# sd.  
 1-18-65 TD 5100', PBD 5061', COMPLETED.