

COUNTY	LEA	FIELD	Undesignated	STATE	NM	30-025-23026
OPR	UNION OIL CO. OF CALIFORNIA			MAP		
	3 Midway State					
	Sec 12, T-17-S, R-36-E			CO-ORD		
	2085' FSL, 2085' FEL of Sec.					
	Spd 2-24-69					
	Cmp 4-24-69			CLASS EL		
		FORMATION	DATUM	FORMATION	DATUM	
CSG & SX - TUBING						
11 3/4" at 434' w/350 SX						
8 5/8" at 4450' w/400 SX						
LOGS EL GR RA IND HC A						
	TD 11,637'					
PLUGGED & ABANDONED						

Distribution limited and publication prohibited by subscribers' agreement.  
Reproduction rights reserved by Williams & Lee Scouting Service, Inc.

CONT.	McVay Drlg. Co.	PROP DEPTH	11,750'	TYPE
DATE				

F.R. 2-25-69  
 PD 11,750' (Devonian)  
 Contractor - McVay Drlg. Co.

3-4-69	Drlg. 3739'
3-12-69	Drlg. 5592'
3-19-69	Drlg. 7815' lm
3-25-69	Drlg. 9189'
4-2-69	Drlg. 9797'
4-8-69	Drlg. 10,523' lm & sh
4-15-69	Drlg. 11,367'
4-22-69	TD 11,637'; WOO

DST 11,525-575', open 2 hrs, GTS 55 min  
 @ TSTM, rev out WB + 40 BO, rec 180' oil  
 & WB below sub, 1 hr ISIP 3015#, FP 1799-1928#,  
 4 hr FSIP 3420#

4-22-69 Continued  
DST 11,570-600', open 2 hrs (1500' WB),  
GTS 54 min, rec WB + 581' sli GCM (DP leaked),  
no ISIP, FP 776-969#, no FSIP  
DST 11,600-637', open 4 hrs (1500' WB),  
GTS 2 hrs 15 min, rev out 47½ BO + 16½ B WB +  
20 B sul wtr, rec 180' salty sul wtr below sub,  
2 hr ISIP 4426#, FP 1319-2379#, 3 hr FSIP  
4285#

5-5-69 TD 11,637'; PLUGGED & ABANDONED  
LOG TOPS: Anhydrite 1925', San Andres 4815',  
Bone Springs 8765', Pennsylvanian 10,400',  
Mississippian 10,700', Woodford 11,350',  
Devonian 11,512'

5-8-69 COMPLETION REPORTED

**NEW MEXICO OIL CONSERVATION COMMISSION  
WELL LOCATION AND ACREAGE DEDICATION PLAT**

Form C-102  
Supersedes C-128  
Effective 1-1-65

All distances must be from the outer boundaries of the Section.

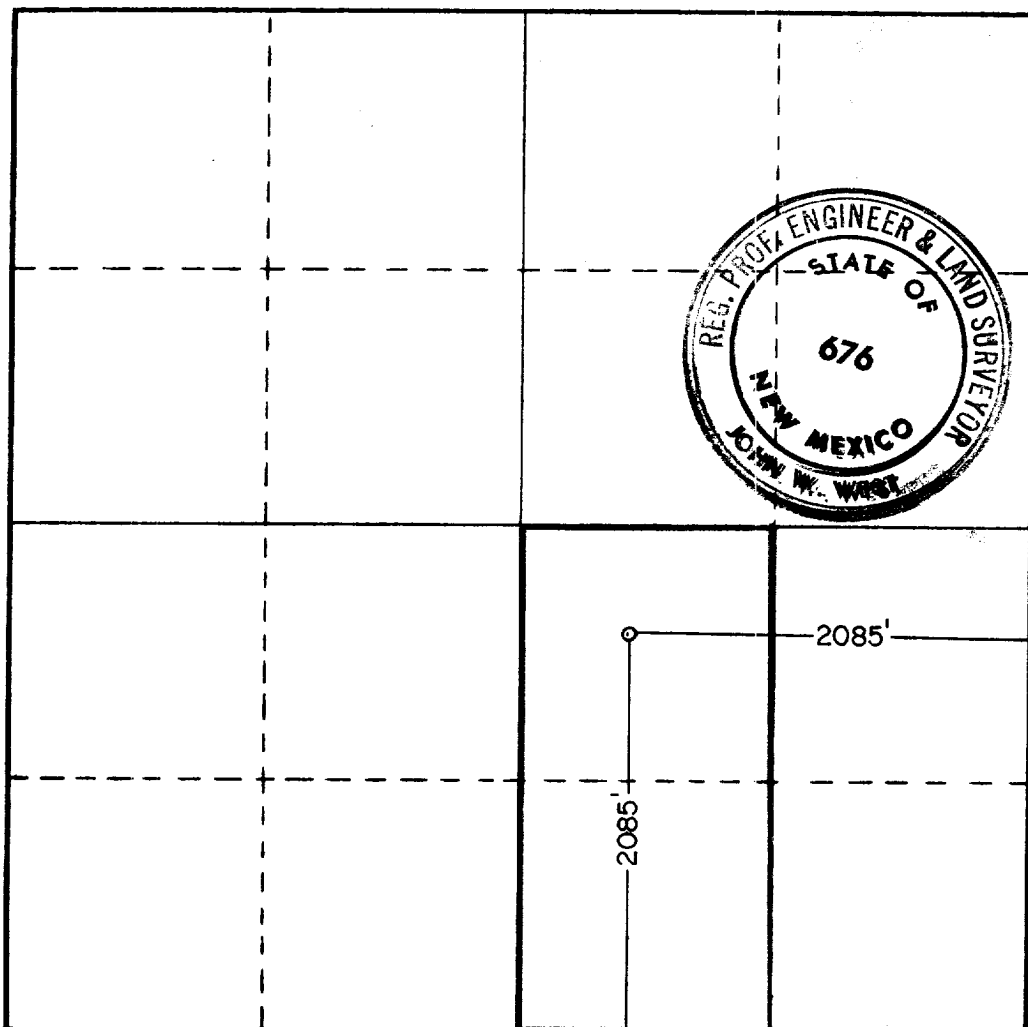
Operator <b>UNION OIL CO. OF CALIFORNIA</b>			Lease <b>MIDWAY STATE</b>		Well No. <b>3</b>
Unit Letter <b>J</b>	Section <b>12</b>	Township <b>17 SOUTH</b>	Range <b>36 EAST</b>	County <b>LEA</b>	
Actual Footage Location of Well: <b>2085</b> feet from the <b>SOUTH</b> line and <b>2085</b> feet from the <b>EAST</b> line					
Ground Level Elev. <b>UNKNOWN</b>	Producing Formation <b>DEVONIAN</b>		Pool <b>LOVINGTON-DEVONIAN</b>		Dedicated Acreage: <b>80</b> Acres

1. Outline the acreage dedicated to the subject well by colored pencil or hachure marks on the plat below.
2. If more than one lease is dedicated to the well, outline each and identify the ownership thereof (both as to working interest and royalty).
3. If more than one lease of different ownership is dedicated to the well, have the interests of all owners been consolidated by communitization, unitization, force-pooling, etc?

☐ Yes    ☐ No    If answer is "yes," type of consolidation \_\_\_\_\_

If answer is "no," list the owners and tract descriptions which have actually been consolidated. (Use reverse side of this form if necessary.) \_\_\_\_\_

No allowable will be assigned to the well until all interests have been consolidated (by communitization, unitization, forced-pooling, or otherwise) or until a non-standard unit, eliminating such interests, has been approved by the Commission.



**CERTIFICATION**

I hereby certify that the information contained herein is true and complete to the best of my knowledge and belief.

Name *John W. West*  
 Position **District Operations Mgr.**  
 Company **Union Oil Co. of California**  
 Date **March 21, 1969**

I hereby certify that the well location shown on this plat was plotted from field notes of actual surveys made by me or under my supervision, and that the same is true and correct to the best of my knowledge and belief.

Date Surveyed **FEBRUARY 18, 1969**  
 Registered Professional Engineer and/or Land Surveyor  
*John W. West*

Certificate No. **676**

