

30-025-26794

| | |
|------------------------|--|
| NO. OF COPIES RECEIVED | |
| DISTRIBUTION | |
| SANTA FE | |
| FILE | |
| U.S.G.S. | |
| LAND OFFICE | |
| OPERATOR | |

NEW MEXICO OIL CONSERVATION COMMISSION

Form O-101
Revised 1-4-65

| | |
|--|------------------------------|
| 5A. Indicate Type of Lease | |
| STATE <input checked="" type="checkbox"/> | FEE <input type="checkbox"/> |
| 5. State Oil & Gas Lease No. | |
| 7. Unit Agreement Name | |
| 8. Farm or Lease Name | |
| Central Vacuum Unit | |
| 9. Well No. | |
| 150 | |
| 10. Field and Pool, or Wildcat | |
| Vacuum Grayburg-S.A. | |
| 12. County | |
| Lea | |
| 13. Proposed Depth | |
| 4800' | |
| 14. Formation | |
| Vacuum-S.A. | |
| 20. Rotary or C.T. | |
| Rotary | |
| 21. Elevations (Show whether D.F., F.L., etc.) | |
| 3972' Gr. | |
| 22. Approx. Date Work will start | |
| 6-10-80 | |

APPLICATION FOR PERMIT TO DRILL, DEEPEN, OR PLUG BACK

| | |
|--|-------------------------------------|
| 1a. Type of Work | |
| b. Type of Well | |
| DRILL <input checked="" type="checkbox"/> | DEEPEN <input type="checkbox"/> |
| OIL WELL <input type="checkbox"/> | GAS WELL <input type="checkbox"/> |
| OTHER Wtr. Inj. | |
| c. Name of Operator | |
| Texaco Inc. | |
| 3. Address of Operator | |
| P. O. Box 3109 - Midland, Texas 79702 | |
| 4. Location of Well | |
| UNIT LETTER B | LOCATED 10 FEET FROM THE North LINE |
| AND 1330 FEET FROM THE East LINE OF SEC. 30 | TOWNSHIP 17-S RANGE 35-E NMPM |
| 11. Proposed Depth | |
| 4800' | |
| 14. Formation | |
| Vacuum-S.A. | |
| 20. Rotary or C.T. | |
| Rotary | |
| 21. Elevations (Show whether D.F., F.L., etc.) | |
| 3972' Gr. | |
| 22. Approx. Date Work will start | |
| 6-10-80 | |

PROPOSED CASING AND CEMENT PROGRAM

| SIZE OF HOLE | SIZE OF CASING | WEIGHT PER FOOT | SETTING DEPTH | SACKS OF CEMENT | EST. TOP |
|--------------|----------------|-----------------|---------------|-----------------|-----------|
| 12-1/4" | 8-5/8" | 24# -K-55STC | 1640' | 1200 | Circulate |
| 7-7/8" | 4-1/2" | 10.5# -K-55STC | 4800' | 3200 | Circulate |
| 17-1/2" | 13-3/8" | 48# H-40 STC | 350' | 400 | Circulate |

Surface Casing 1200 sxs. Class "C" w/2% CaCl₂ (14.8 ppg, 1.32 ft³/sx)

Production Csg. 3000 sxs. Lite Weight w/15# salt, 1/4# Flocele/sx. (12.54 ppg, 1.83 ft³/sx), followed by 200 sxs. Class "C" w/8# salt, 1/4# Flocele/sx (14.44 ppg, 1.38 ft³/sx).

Additional Surface Casing

400 sxs. Class "C" w/2% CaCl₂ (14.8 ppg, 1.32 ft³/sx).

1. ABOVE SPACE DESCRIBE PROPOSED PROGRAM OF WORK. ALSO INDICATE PRESENT PRODUCTION ZONE AND PROPOSED NEW PRODUCTION ZONE. GIVE BLOWOUT PREVENTER PROGRAM, IF ANY.

I hereby certify that the information above is true and correct to the best of my knowledge.

Signed Don H. Hester Assistant Division Petroleum Engineer April 28, 1980

(This space for State Use)

APPROVED BY James Hester SUPERVISOR DISTRICT 1 DATE APR 28 1980 APPROVAL VALID FOR 90 DAYS UNLESS DRILLING COMMENCED, EXPIRES 9-18-80

CONDITIONS OF APPROVAL, IF ANY:

NEW MEXICO OIL CONSERVATION COMMISSION
WELL LOCATION AND ACREAGE DEDICATION PLAT

Form C-102
Supersedes C-128
Effective 1-1-65

All distances must be from the outer boundaries of the Section.

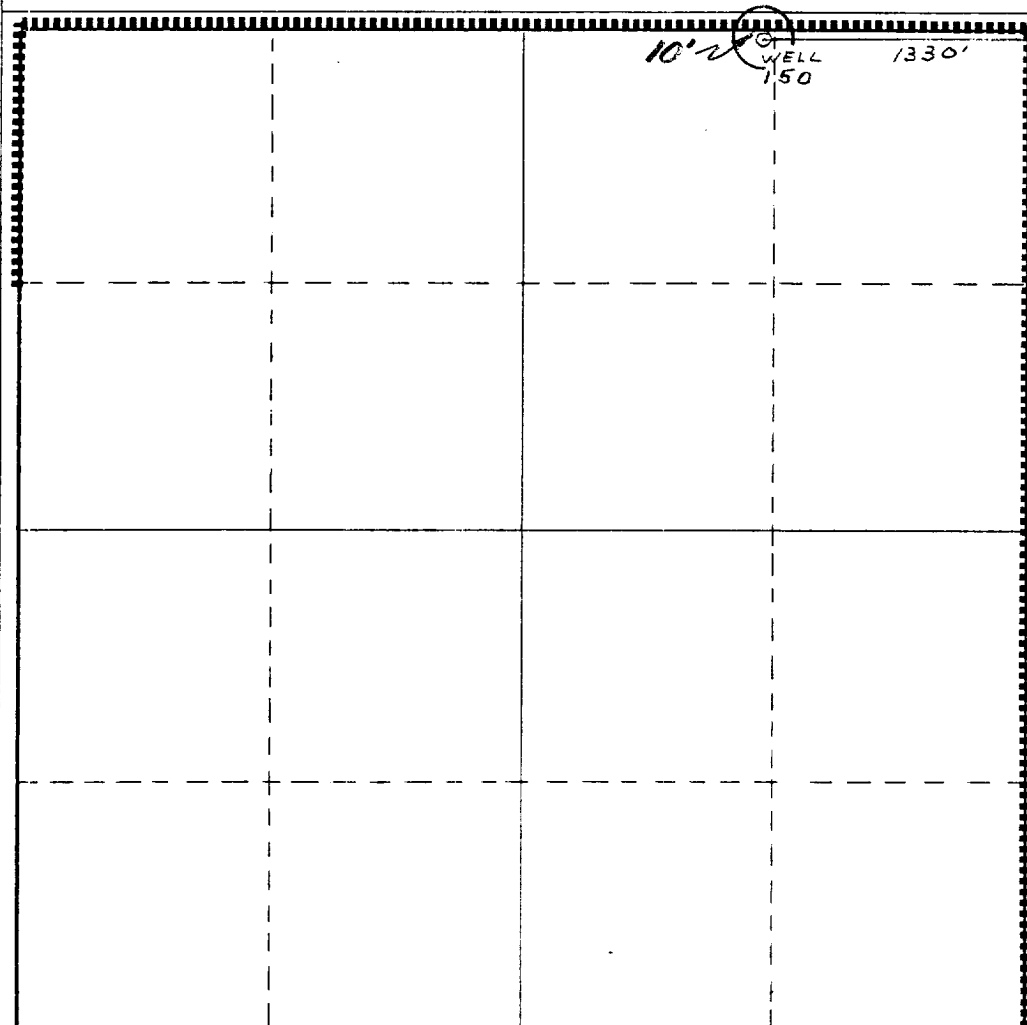
| | | | | |
|--|---|---------------------------------------|---------------------------------------|------------------------|
| Operator Texaco Inc. | | Lease Central Vacuum Unit | | Well No. 150 |
| Unit Letter B | Section 30 | Township T-17-S | Range R-35-E | County Lea |
| Actual Footage Location of Well: 10 feet from the North line and 1330 feet from the East line | | | | |
| Ground Level Elev. 3972' | Producing Formation Vacuum San Andres | Pool Vacuum (Grayburg-S.A.) | Dedicated Acreage: 40 Acres | |

1. Outline the acreage dedicated to the subject well by colored pencil or hachure marks on the plat below.
2. If more than one lease is dedicated to the well, outline each and identify the ownership thereof (both as to working interest and royalty).
3. If more than one lease of different ownership is dedicated to the well, have the interests of all owners been consolidated by communitization, unitization, force-pooling, etc?

☐ Yes ☐ No If answer is "yes," type of consolidation _____

If answer is "no," list the owners and tract descriptions which have actually been consolidated. (Use reverse side of this form if necessary.) _____

No allowable will be assigned to the well until all interests have been consolidated (by communitization, unitization, forced-pooling, or otherwise) or until a non-standard unit, eliminating such interests, has been approved by the Commission.



CERTIFICATION

I hereby certify that the information contained herein is true and complete to the best of my knowledge and belief.

B. L. Eiland

Name

B. L. Eiland

Position

Division Surveyor

Company

Texaco Inc.

Date

April 28, 1980

I hereby certify that the well location shown on this plat was plotted from field notes of actual surveys made by me or under my supervision, and that the same is true and correct to the best of my knowledge and belief.

April 21, 1980

Date Surveyed

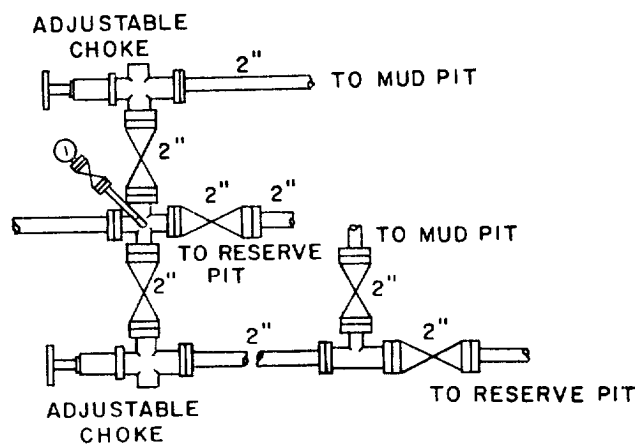
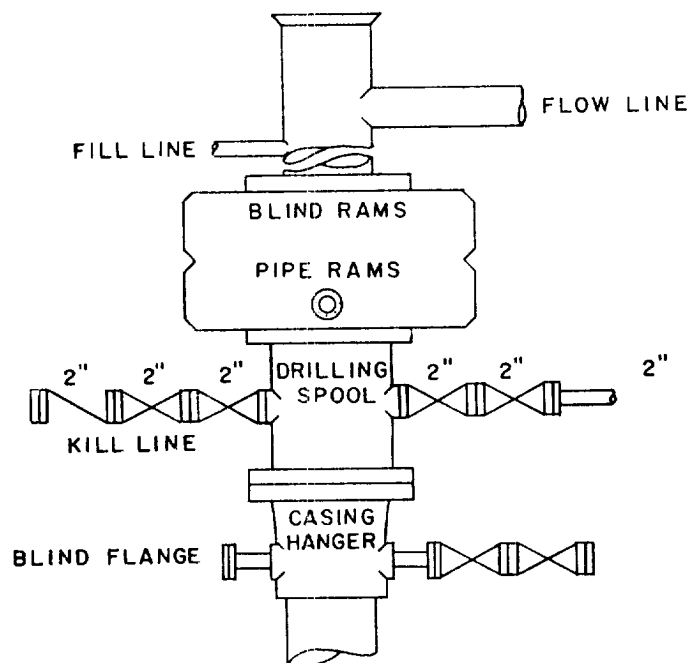
Registered Professional Engineer and/or Land Surveyor

B. L. Eiland
B. L. Eiland

Certificate No.

4386

0 330 660 990 1320 1650 1980 2310 2640 2970 3300 3630 3960 4290 4620 4950 5280 5610 5940 6270 6600



| | | | |
|-----------------|------|----------|----------|
| SCALE: NONE | DATE | EST. NO. | DRG. NO. |
| DRAWN BY: JWD | | | |
| CHECKED BY: RDW | | | |
| APPROVED BY | | | |



TEXACO, INC.
PRODUCING DEPARTMENT-U.S. (EAST)
MIDLAND, TEXAS



EXHIBIT "B"

RECEIVED

MAY 2 1980

OIL CONSERVATION DIV

MAY 2 1980
OIL CONSERVATION DIV