

|                        |  |
|------------------------|--|
| NO. OF COPIES RECEIVED |  |
| DISTRIBUTION           |  |
| SANTA FE               |  |
| FILE                   |  |
| U.S.G.S.               |  |
| LAND OFFICE            |  |
| OPERATOR               |  |

5A. Indicate Type of Lease  
STATE ☒ FEE ☐  
5. State Oil & Gas Lease No.  
B-1520-1

APPLICATION FOR PERMIT TO DRILL, DEEPEN, OR PLUG BACK

1a. Type of Work

b. Type of Well DRILL ☒ DEEPEN ☐ PLUG BACK ☐  
OIL WELL ☒ GAS WELL ☐ OTHER ☐ SINGLE ZONE ☒ MULTIPLE ZONE ☐

2. Name of Operator

Mobil Producing TX. & N.M. Inc.

3. Address of Operator

P. O. Box 633, Midland, Tx. 79702

4. Location of Well

UNIT LETTER I LOCATED 2050' FEET FROM THE South LINE  
AND 652 FEET FROM THE East LINE OF SEC. 27 TWP. 17S RGE. 34E NMPM

7. Unit Agreement Name  
North Vacuum Abo Unit

8. Farm or Lease Name

9. Well No.

276

10. Field and Pool, or Wildcat

North Vacuum Abo

12. County

Lea

|  |  |                            |                       |                              |  |
|--|--|----------------------------|-----------------------|------------------------------|--|
| 11. Elevations (Show whether DF, KT, etc.)<br>4037 | 21A. Kind & Status Plug. Bond<br>On File | 19. Proposed Depth<br>8800 | 19A. Formation<br>Abo | 20. Rotary or C.T.<br>Rotary | 22. Approx. Date Work will start<br>ASAP |
|--|--|----------------------------|-----------------------|------------------------------|--|

23.

PROPOSED CASING AND CEMENT PROGRAM

| SIZE OF HOLE | SIZE OF CASING | WEIGHT PER FOOT        | SETTING DEPTH         | SACKS OF CEMENT | EST. TOP |
|--------------|----------------|------------------------|-----------------------|-----------------|----------|
| 17 1/2"      | 13 3/8"        | 48# H-40               | 0-400'                | Circulate       | Surface  |
| 12 1/4"      | 8 5/8"         | 28# S-80<br>32# K-55   | 0-500'<br>500-5000'   | Circulate       | Surface  |
| 7 7/8"       | 5 1/2" Liner   | 17# K-55<br>15.5# K-55 | 4800-5500'<br>5500-TD | Circulate       | 4800' *  |

BLOWOUT PREVENTOR PROGRAM

| Casing String | Equipment Size & API Series | No. & Type              | Test Pressure (PSI) |
|---------------|-----------------------------|-------------------------|---------------------|
| Surface       | 13 5/8" X 3000#             | 1 MG & 1 PR             | 3000                |
|               |                             | 1 MG 1 PR & Rotary Head | 5000                |

Permit Expires 6 Months From Approval  
Date Unless Drilling Underway.

ABOVE SPACE DESCRIBE PROPOSED PROGRAM; IF PROPOSAL IS TO DEEPEN OR PLUG BACK, GIVE DATA ON PRESENT PRODUCTIVE ZONE AND PROPOSED NEW PRODUCTIVE ZONE. GIVE BLOWOUT PREVENTOR PROGRAM, IF ANY.

I hereby certify that the information above is true and complete to the best of my knowledge and belief.

Signed H. B. Bond for G.E. Tate Title Env. & Reg. Manager Date April 18, 1985

(This space for State Use)

ORIGINAL SIGNED BY JERRY TAYLOR

DISTRICT 1 SUPERVISOR

PROVED BY \_\_\_\_\_ TITLE \_\_\_\_\_ DATE MAY 2 1985

CONDITIONS OF APPROVAL, IF ANY:

RECEIVED

MAY 1 1985

O.C.D.  
HOBBS OFFICE

All di

ra must be from the outer boundaries of the St

verale

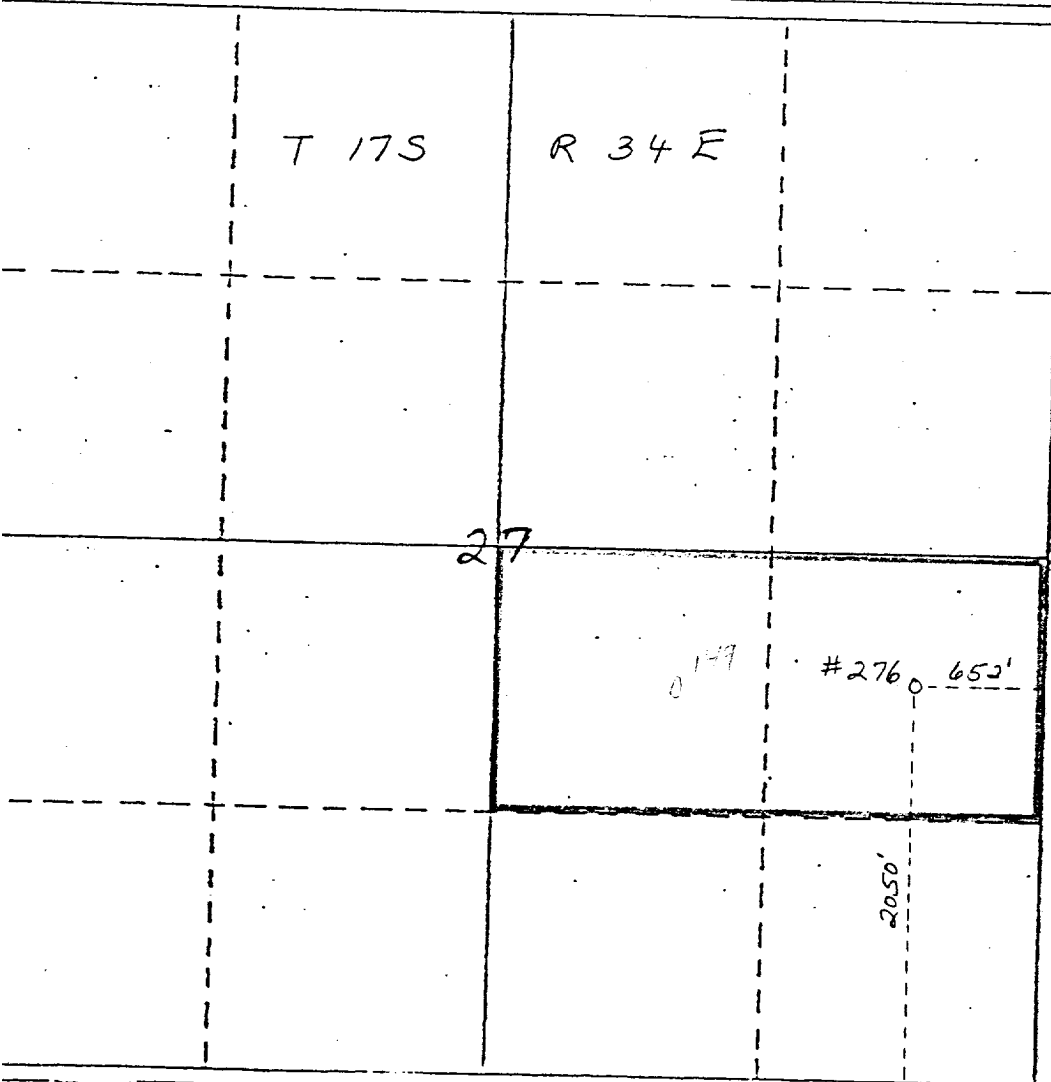
|                                   |                         |                             |                       |                  |                                     |              |  |
|-----------------------------------|-------------------------|-----------------------------|-----------------------|------------------|-------------------------------------|--------------|--|
| Mobil Producing Tx. & N.M., Inc.  |                         | Lease                       |                       | North Vacuum Abo |                                     | Well No. 276 |  |
| Section 27                        | Township 17 S           | Range 34 E                  | County Lea            |                  |                                     |              |  |
| Actual Footage Location of Well:  |                         |                             |                       |                  |                                     |              |  |
| 2050 feet from the South line and |                         | 652 feet from the East line |                       |                  |                                     |              |  |
| Bound Level Elev. 4037'           | Producing Formation Abo |                             | Pool North Vacuum Abo |                  | Dedicated Acres: (2 wells) 80 Acres |              |  |

1. Outline the acreage dedicated to the subject well by colored pencil or hatchure marks on the plat below.
2. If more than one lease is dedicated to the well, outline each and identify the ownership thereof (both as to working interest and royalty).
3. If more than one lease of different ownership is dedicated to the well, have the interests of all owners been consolidated by communitization, unitization, force-pooling, etc?

☒ Yes ☐ No If answer is "yes," type of consolidation Unitized

If answer is "no," list the owners and tract descriptions which have actually been consolidated. (Use reverse side of this form if necessary.)

No allowable will be assigned to the well until all interests have been consolidated (by communitization, unitization, forced-pooling, or otherwise) or until a non-standard unit, eliminating such interests, has been approved by the Division.



## CERTIFICATION

I hereby certify that the information contained herein is true and complete to the best of my knowledge and belief.

Name

G.E. Tate

Position

Environmental &amp; Reg. Mgr

Company

Mobil Producing T &amp; NM

Date

4-12-85

I hereby certify that the well location shown on this plat was plotted from field notes of actual survey made by me or under my supervision and that the same is true and correct to the best of my knowledge and belief.

Date Surveyed

April 1, 1985

Registered Professional Engineer  
and/or Land Surveyor

Certificate No.

5063

RECEIVED

MAY 1 1985

O.C.D.  
HOBBS OFFICE

172