

30-025-29560

NO. OF COPIES RECEIVED	
DISTRIBUTION	
SANTA FE	
FILE	
U.S.G.S.	
LAND OFFICE	
OPERATOR	

NEW MEXICO OIL CONSERVATION COMMISSION

Form C-101
Revised 1-1-65

5A. Indicate Type of Lease
STATE FEE

5. State Oil & Gas Lease No.
B-1520-1

APPLICATION FOR PERMIT TO DRILL, DEEPEN, OR PLUG BACK

1a. Type of Work
b. Type of Well DRILL DEEPEN PLUG BACK
OIL WELL GAS WELL OTHER*Amended Location SINGLE ZONE MULTIPLE ZONE

2. Name of Operator
Mobil Producing Texas & New Mexico, Inc.

3. Address of Operator
P. O. Box 633, Midland, Texas 79702

4. Location of Well UNIT LETTER C LOCATED 2100 FEET FROM THE West LINE
AND 800 FEET FROM THE North LINE OF SEC. 23 TWP. 17-S RGE. 34-E NMPM

7. Unit Agreement Name
North Vacuum Abo Unit

8. Farm or Lease Name

9. Well No.
294

10. Field and Pool, or Wildcat
North Vacuum ABO

12. County
Lea

19. Proposed Depth
9,000'

19A. Formation
Abo

20. Rotary or C.T.
Rotary

21. Elevations (Show whether DF, RT, etc.)
4030' GR

21A. Kind & Status Plug. Bond
On File

21B. Drilling Contractor
Unknown

22. Approx. Date Work will start
ASAP

PROPOSED CASING AND CEMENT PROGRAM

SIZE OF HOLE	SIZE OF CASING	WEIGHT PER FOOT	SETTING DEPTH	SACKS OF CEMENT	EST. TOP
17-1/2"	13-3/8"	48#	400'	Circulate to Surface	
12-1/4"	8-5/8"	28 & 32#	0-5000'	Circulate to Surface	
7-7/8"	5-1/2" Liner	15.5# 17#	4200-7400' 7400'-TD	Circulate to Surface	

BLOWOUT PREVENTER PROGRAM

Casing String	Equipment Size & API Series	No. & Type	Test Pressure (psi)
Surface	13-5/8" x 3000#	1 MG & 1 PR 1 MG, 1 PR & Rotary Head	3000# 5000#

*Location was moved 20' west of original application because of pipeline.

IN ABOVE SPACE DESCRIBE PROPOSED PROGRAM: IF PROPOSAL IS TO DEEPEN OR PLUG BACK, GIVE DATA ON PRESENT PRODUCTIVE ZONE AND PROPOSED NEW PRODUCTIVE ZONE. GIVE BLOWOUT PREVENTER PROGRAM, IF ANY.

I hereby certify that the information above is true and complete to the best of my knowledge and belief.

Signed C.P. Smith for G. E. Tate Title Env. & Reg. Manager Date 12-30-85

(This space for State Use)
ORIGINAL SIGNED BY JERRY DEXTON
DISTRICT 1 SUPERVISOR

APPROVED BY _____ TITLE _____ DATE JAN 3 - 1986

CONDITIONS OF APPROVAL, IF ANY:

Permit Expires 6 Months From Approval
Date Unless Drilling Underway.

RECEIVED

JAN 2 - 1986

HOON

OIL CONSERVATION DIVISION

STATE OF NEW MEXICO
ENERGY AND MINERALS DEPARTMENT

P. O. BOX 2088
SANTA FE, NEW MEXICO 87501

Form C-102
Revised 10-1-78

All distances must be from the outer boundaries of the Section.

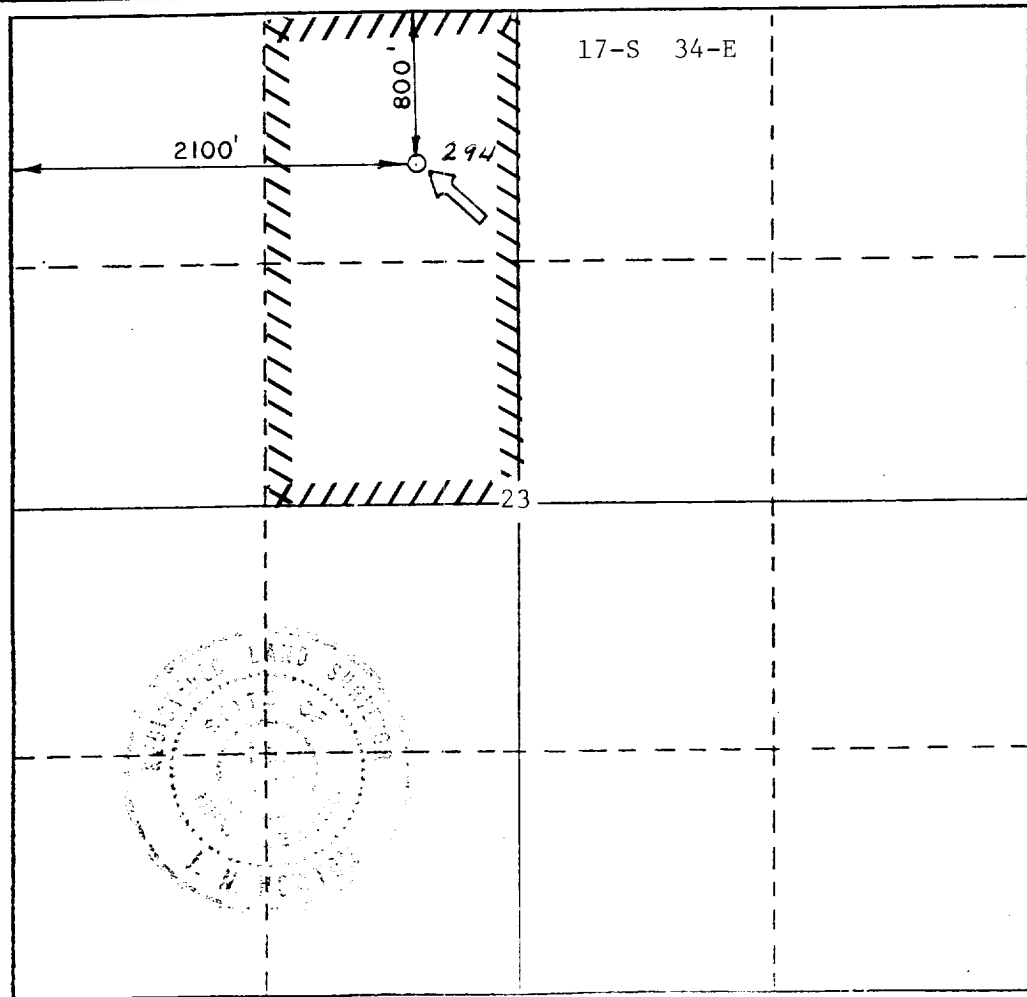
Operator <i>Mobil Producing Texas And New Mexico, Inc.</i>		Lease <i>North Vacuum Abo Unit</i>		Well No. <i>294</i>
Unit Letter <i>C</i>	Section <i>23</i>	Township <i>17 South</i>	Range <i>34 East</i>	County <i>Lea</i>
Actual Footage Location of Well: <i>2100</i> feet from the <i>West</i> line and <i>800</i> feet from the <i>North</i> line				
Ground Level Elev. <i>4030</i>	Producing Formation <i>Abo</i>	Pool <i>North Vacuum Abo</i>	Dedicated Acreage: <i>(2 wells) 80</i> Acres	

1. Outline the acreage dedicated to the subject well by colored pencil or hachure marks on the plat below.
2. If more than one lease is dedicated to the well, outline each and identify the ownership thereof (both as to working interest and royalty).
3. If more than one lease of different ownership is dedicated to the well, have the interests of all owners been consolidated by communitization, unitization, force-pooling, etc?

Yes No If answer is "yes," type of consolidation Unitized

If answer is "no," list the owners and tract descriptions which have actually been consolidated. (Use reverse side of this form if necessary.) _____

No allowable will be assigned to the well until all interests have been consolidated (by communitization, unitization, forced-pooling, or otherwise) or until a non-standard unit, eliminating such interests, has been approved by the Division.



CERTIFICATION

I hereby certify that the information contained herein is true and complete to the best of my knowledge and belief.

E. C. Smith - for

Name
G. E. Tate

Position
Env. & Reg. Manager

Company
Mobil Producing TX & NM, Inc.

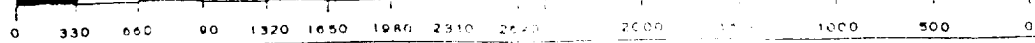
Date
12-30-85

I hereby certify that the well location shown on this plat was plotted from field notes of actual surveys made by me or under my supervision, and that the same is true and correct to the best of my knowledge and belief.

Date Surveyed
December 28, 1985

Registered Professional Engineer and/or Land Surveyor
J. A. Newton

Certificate No.
5109



RECEIVED

JAN 2 - 1968

HOUSTON