

HPI# 30-025-30763

UNITED STATES  
DEPARTMENT OF THE INTERIOR  
BUREAU OF LAND MANAGEMENT

RECEIVED  
5. LEASE DESIGNATION AND SERIAL NO.  
NM-56749  
6. IF INDIAN, ALLOTTEE OR TRIBE NAME  
Dec 6 10 43 AM '89  
7. UNIT AGREEMENT NAME  
8. WARM-OR LEASE NAME  
Texaco Federal  
9. WELL NO.  
1  
10. FIELD AND POOL, OR WILDCAT  
Wildcat East Gem Marlow  
11. SEC., T., R., M., OR BLK.  
AND SURVEY OR AREA  
Sec. 14-T19S-R33E  
12. COUNTY OR PARISH | 13. STATE  
Lea | New Mexico  
22. APPROX. DATE WORK WILL START\*  
Dec. 17, 1989

APPLICATION FOR PERMIT TO DRILL, DEEPEN, OR PLUG BACK

1a. TYPE OF WORK  
DRILL  DEEPEN  PLUG BACK   
b. TYPE OF WELL  
OIL WELL  GAS WELL  OTHER  SINGLE ZONE  MULTIPLE ZONE   
2. NAME OF OPERATOR  
Manzano Oil Corporation  
3. ADDRESS OF OPERATOR  
P. O. Box 2107 Roswell, NM 88202  
4. LOCATION OF WELL (Report location clearly and in accordance with any State requirements.)\*  
At surface 2060' FSL & 1980' FWL  
At proposed prod. zone Same  
14. DISTANCE IN MILES AND DIRECTION FROM NEAREST TOWN OR POST OFFICE\*  
32 roadmiles west of Hobbs, NM  
15. DISTANCE FROM PROPOSED\* LOCATION TO NEAREST PROPERTY OR LEASE LINE, FT. (Also to nearest drlg. unit line, if any) 1980'  
16. NO. OF ACRES IN LEASE 520  
17. NO. OF ACRES ASSIGNED TO THIS WELL 320  
18. DISTANCE FROM PROPOSED LOCATION\* TO NEAREST WELL, DRILLING, COMPLETED, OR APPLIED FOR, ON THIS LEASE, FT. N/A  
19. PROPOSED DEPTH 13,700'  
20. ROTARY OR CABLE TOOLS Rotary  
21. ELEVATIONS (Show whether DF, RT, GR, etc.) 3673' GL  
22. APPROX. DATE WORK WILL START\* Dec. 17, 1989

PROPOSED CASING AND CEMENTING PROGRAM

SIZE OF HOLE	SIZE OF CASING	WEIGHT PER FOOT	SETTING DEPTH	QUANTITY OF CEMENT
17 1/2"	13 3/8"	54.5#	500'	500 sx "C" <u>circulated</u>
12 1/4"	8 5/8"	32.0#	5,400'	2600 sx HL & C <u>circ.</u>
7 7/8"	5 1/2"	17-23#	13,700'	1400 sx H w/ 50/50 poz

MUD PROGRAM:

		Wt.	Vis.	Wtr/Loss
0' - 500'	Fresh Water, gel, lime	8.5- 9.0	28-36	NC
500' - 5400'	Brine, native mud, 3-5% oil	10.0-10.2	28-34	NC
5400' - 8500'	Fresh wtr w/gel & polymer sweeps	8.4- 8.8	28-32	NC
8500' - 12400'	Cut brine w/pre-hyd gel + drispac	9.2- 9.6	32-36	15-30cc
12400' - TD	Pre-hyd gel, caustic, drispac, starch, KCL & barite as required--	10.4-12.0	38-50	10-15cc

BOP PROGRAM:  
A Shaffer LWS hydraulic double 10" x 1500 series BOP with one Hydril 10" x 1500 series will be used and tested daily as a 5,000 psi system.

Gas not dedicated.

IN ABOVE SPACE DESCRIBE PROPOSED PROGRAM: If proposal is to deepen or plug back, give data on present productive zone and proposed new productive zone. If proposal is to drill or deepen directionally, give pertinent data on subsurface locations and measured and true vertical depths. Give blowout preventer program, if any.

24. SIGNED George Smith Agent for: Manzano Oil Corp. DATE Dec. 4, 1989

(This space for Federal or State office use)

PERMIT NO. \_\_\_\_\_ APPROVAL DATE \_\_\_\_\_

APPROVED BY Orig. Signed by Richard L. Manus TITLE \_\_\_\_\_ DATE 12-15-89

CONDITIONS OF APPROVAL, IF ANY:  
APPROVAL SUBJECT TO  
FEDERAL REQUIREMENTS AND  
STATE REQUIREMENTS

\*See Instructions On Reverse Side

RECEIVED

DEC 18 1961

HONORARY

omit to Appropriate  
 strict Office  
 the Lease - 4 copies  
 e Lease - 3 copies

State of New Mexico  
 Energy, Minerals and Natural Resources Department

Form C-102  
 Revised 1-1-89

**OIL CONSERVATION DIVISION**

P.O. Box 2088  
 Santa Fe, New Mexico 87504-2088

**STRICT I**  
 P.O. Box 1980, Hobbs, NM 88240

**STRICT II**  
 P.O. Drawer DD, Artesia, NM 88210

**STRICT III**  
 P.O. Rio Brazos Rd., Aztec, NM 87410

**WELL LOCATION AND ACREAGE DEDICATION PLAT**

All Distances must be from the outer boundaries of the section

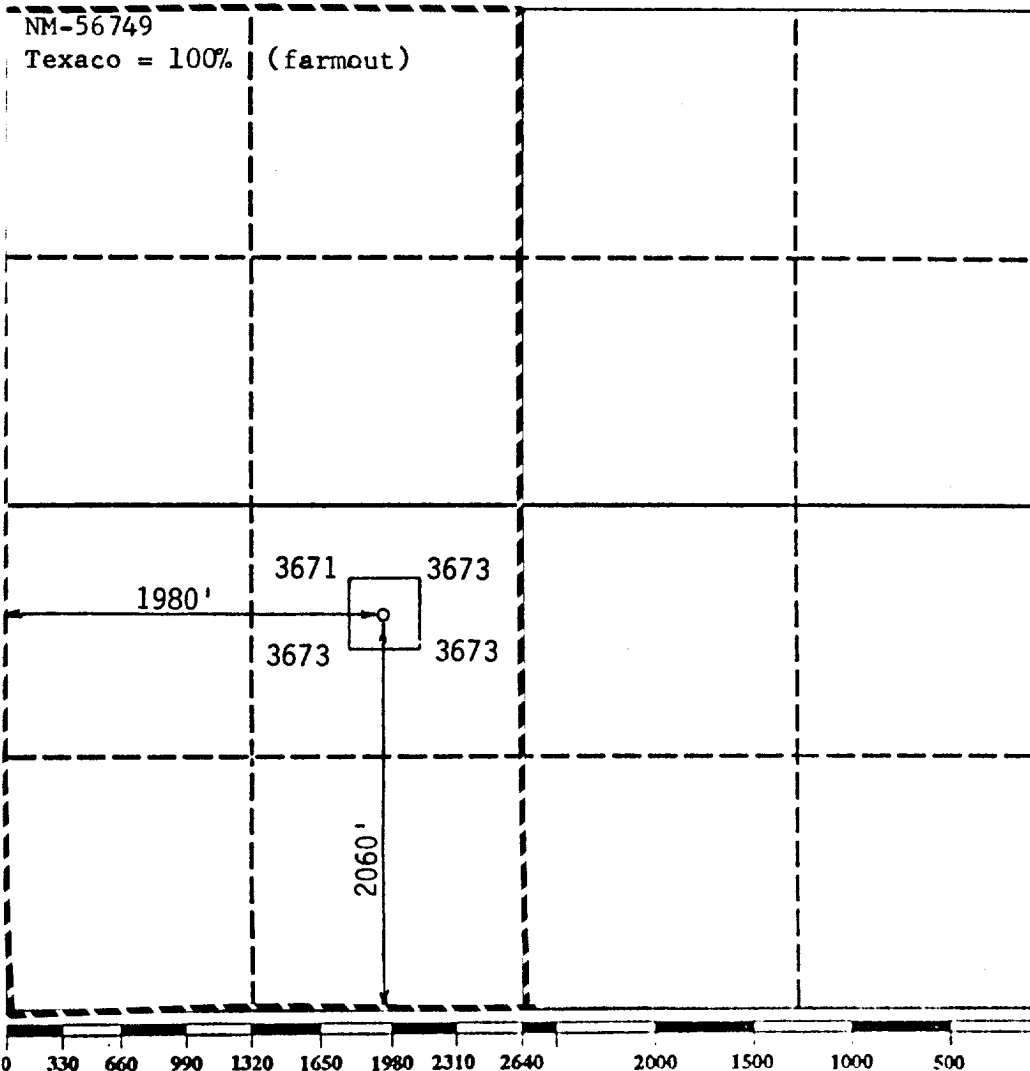
Operator Manzano Oil Corporation			Lease Texaco Federal		Well No. 1
Grid Letter K	Section 14	Township 19 South	Range 33 East	County Lea	
NMPM					
Well Location of Well: 2060 feet from the South line and 1980 feet from the West line					
Ground level Elev. 3673	Producing Formation Morrow		Pool Wildcat	Dedicated Acreage: 320 Acres	

- Outline the acreage dedicated to the subject well by colored pencil or hachure marks on the plat below.
- If more than one lease is dedicated to the well, outline each and identify the ownership thereof (both as to working interest and royalty).
- If more than one lease of different ownership is dedicated to the well, have the interest of all owners been consolidated by communitization, unitization, force-pooling, etc.?
 

Yes  No If answer is "yes" type of consolidation \_\_\_\_\_

If answer is "no" list the owners and tract descriptions which have actually been consolidated. (Use reverse side of this form if necessary.) \_\_\_\_\_

No allowable will be assigned to the well until all interests have been consolidated (by communitization, unitization, forced-pooling, or otherwise) or until a non-standard unit, eliminating such interest, has been approved by the Division.



**OPERATOR CERTIFICATION**

I hereby certify that the information contained herein is true and complete to the best of my knowledge and belief.

Signature  
*George R. Smith*

Printed Name  
 George R. Smith

Position  
 Agent for:

Company  
 Manzano Oil Corp.

Date  
 Dec. 4, 1989

---

**SURVEYOR CERTIFICATION**

I hereby certify that the well location shown on this plat was plotted from field notes of actual surveys made by me or under my supervision, and that the same is true and correct to the best of my knowledge and belief.

Date Surveyed  
 November 30, 1989

Signature & Seal of Professional Surveyor  
 P. R. Patton

Certificate No.  
 8112

## DRAWWORKS

Mid Continent U-712A

Drum: 1 1/4" Lebus grooved

Compound: 2-engine oil bath chain drive

Brake: Hydromatic Parkersburg 46" Double

## ENGINES

Two 610-H.P. D379TA Caterpillar Diesel

## DERRICK

Lee C. Moore, 131', 550,000 lb. nominal capacity

## SUBSTRUCTURE

Lee C. Moore, 18' high, 550,000 lb. nominal capacity

## MUD PUMPS

Pump No. 1: Emsco F-800 Triplex. 800 H.P. with steel fluid end. 4 1/4" - 6 1/2" liners, 9" stroke. Compound-drive.

Pump No. 2: Emsco DB550, powered by D379 Caterpillar Diesel.

## DRILL STRING

3000' 4 1/2" Grade E, 20 lb.

Tool Joints: 4 1/2" H-90, 6 1/4" OD, 12000' 4 1/2" Grade E, 16.60 lb.

Tool Joints: 4" H-90, 6" OD

Thirty Drilco spiral-grooved 6 1/2" OD, 2 1/4" ID. With 4" H-90 Joints.

Other sized drillpipe & drillcollars available.

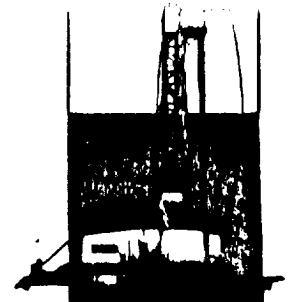
## BLOWOUT PREVENTERS

One Shaffer LWS hydraulic double 10" x 1500 series. One Hydril 10" x 1500 series.

Choke manifold 4" x 1500 series flanged connections. Payne 4 valve accumulator closing unit.

## MUD SYSTEM

3 - 30 x 8 x 6 steel pits, with 750 Bbl. capacity. Complete low pressure circulating system, consisting of four submerged mud guns and two counter sunk jets in each pit. System utilizes two - 6 x 8 centrifugal pumps, powered by diesel.



**MORANCO**  
**RIG 3**  
9,000'-15,000'

## MUD HOUSE

One - 8' x 30' Steel Storage House.

## COMMUNICATIONS

24 - Hour direct telephone interconnection through Hobbs (A.C. 505-397-3291) or Midland - Odessa (A.C. 915-563-0562).

## OTHER EQUIPMENT

BLOCKS - Oilwell 350 Ton

HOOK - BJ4300 350 Ton

SWIVEL - NAT P400 350 Ton

LIGHT PLANTS - One 40 KW and one 15 KW AC generators, powered by diesel engines.

LIGHTS - AC fluorescent or mercury - All vapor proof.

FRESH WATER STORAGE - two 500 Bbl. and one 400 Bbl. horizontal tanks.

HOUSING - 1 - 8' x 36' airconditioned trailer house, with sleeping and cooking facilities.

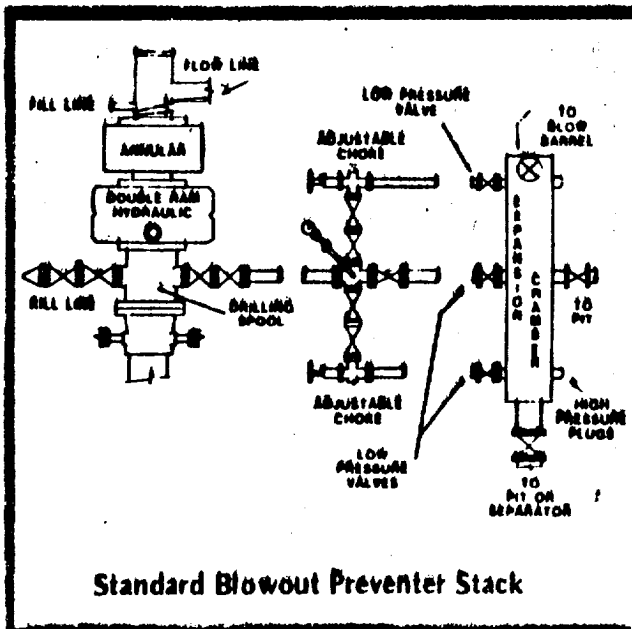


EXHIBIT "E"  
MANZANO OIL CORPORATION  
Texaco Federal, Well No. 1  
BOP Specifications

173  
Rec'd 3/30/90

APR 18 1990  
FBI - MEMPHIS