

Submit to Appropriate
District Office
State Lease - 6 copies
Fee Lease - 5 copies

State of New Mexico
Energy, Minerals and Natural Resources Department

Form C-101
Revised 1-1-89

OIL CONSERVATION DIVISION

P.O. Box 2088
Santa Fe, New Mexico 87504-2088

DISTRICT I
P.O. Box 1980, Hobbs, NM 88240

DISTRICT II
P.O. Drawer DD, Artesia, NM 88210

DISTRICT III
1000 Rio Brazos Rd., Aztec, NM 87410

API NO. (assigned by OCD on New Wells)
30-025-31703

5. Indicate Type of Lease
STATE ☒ FEE ☐

6. State Oil & Gas Lease No.
B-2706

APPLICATION FOR PERMIT TO DRILL, DEEPEN, OR PLUG BACK

1a. Type of Work:
DRILL ☒ RE-ENTER ☐ DEEPEN ☐ PLUG BACK ☐
b. Type of Well:
OIL WELL ☐ GAS WELL ☐ OTHER WATER INJECTION ☐ SINGLE ZONE ☒ MULTIPLE ZONE ☐

7. Lease Name or Unit Agreement Name
VACUUM GLORIETA WEST UNIT

2. Name of Operator
TEXACO EXPLORATION AND PRODUCTION INC.

8. Well No.
53

3. Address of Operator
P. O. Box 3109, Midland, Texas 79702

9. Pool name or Wildcat
VACUUM GLORIETA

4. Well Location
Unit Letter N : 215 Feet From The SOUTH Line and 2350 Feet From The WEST Line
Section 25 Township 17-SOUTH Range 34-EAST NMPM LEA County

10. Proposed Depth
6300'
11. Formation
GLORIETA/PADDOCK
12. Rotary or C.T.
ROTARY

13. Elevations (Show whether DP, RT, GR, etc.)
GR-4003'
14. Kind & Status Plug. Bond
BLANKET
15. Drilling Contractor
TO BE SELECTED
16. Approx. Date Work will start
SEPTEMBER 15, 1992

17. PROPOSED CASING AND CEMENT PROGRAM					
SIZE OF HOLE	SIZE OF CASING	WEIGHT PER FOOT	SETTING DEPTH	SACKS OF CEMENT	EST. TOP
17 1/2	13 3/8	48#	40'	REDI-MIX	SURFACE
11	8 5/8	24#	1550'	500	SURFACE
7 7/8	5 1/2	15.5#	6300'	1300	SURFACE

CEMENTING PROGRAM: CONDUCTOR - REDIMIX.
SURFACE CASING - 300 SX CLASS C w/ 4% GEL & 2% CaCl₂ (13.5ppg, 1.74cf/s, 9.1gw/s). F/B 200 SX CLASS C w/ 2% CaCl₂ (14.8ppg, 1.94cf/s, 6.3gw/s).
PRODUCTION CASING - 1st STG: 300 SX CLASS H w/ 1/4# FLOCELE (15.6ppg, 1.18cf/s, 5.2gw/s).
DV TOOL @ 5000' - 2nd STG: 750 SX 35/65 POZ CLASS H w/ 6% GEL, 5% SALT & 1/4# FLOCELE (12.8ppg, 1.94cf/s, 10.4gw/s). F/B 250 SX CLASS H w/ 1/4# FLOCELE (15.6ppg, 1.18cf/s, 5.2gw/s).

MARATHON OPERATES A WELL IN THIS QUARTER QUARTER SECTION AND HAS BEEN FURNISHED A COPY OF THIS APPLICATION.

UNORTHODOX LOCATION - EXCEPTION HAS BEEN REQUESTED (COPY ATTACHED).

IN ABOVE SPACE DESCRIBE PROPOSED PROGRAM: IF PROPOSAL IS TO DEEPEN OR PLUG BACK, GIVE DATA ON PRESENT PRODUCTIVE ZONE AND PROPOSED NEW PRODUCTIVE ZONE. GIVE BLOWOUT PREVENTER PROGRAM, IF ANY.

I hereby certify that the information above is true and complete to the best of my knowledge and belief.

SIGNATURE C. P. Basham/cwh TITLE DRILLING OPERATIONS MANAGER DATE 09-02-92

TYPE OR PRINT NAME C. P. BASHAM TELEPHONE NO. (915) 688-4620

(This space for State Use)

Orig. Signed by
Paul Kautz
Geologist

APPROVED BY _____ TITLE _____ DATE _____

CONDITIONS OF APPROVAL, IF ANY:

NSL R-974 as amended

Permit Expires 6 Months From Approval
Date Unless Drilling Underway.

Submit to Appropriate
District Office
State Lease - 4 copies
Fee Lease - 3 copies

State of New Mexico
Energy, Minerals and Natural Resources Department

Form C-102
Revised 1-1-89

OIL CONSERVATION DIVISION

DISTRICT I
P.O. Box 1980, Hobbs, NM 88240

P.O. Box 2088

Santa Fe, New Mexico 87504-2088

DISTRICT II
P.O. Drawer DD, Artesia, NM 88210

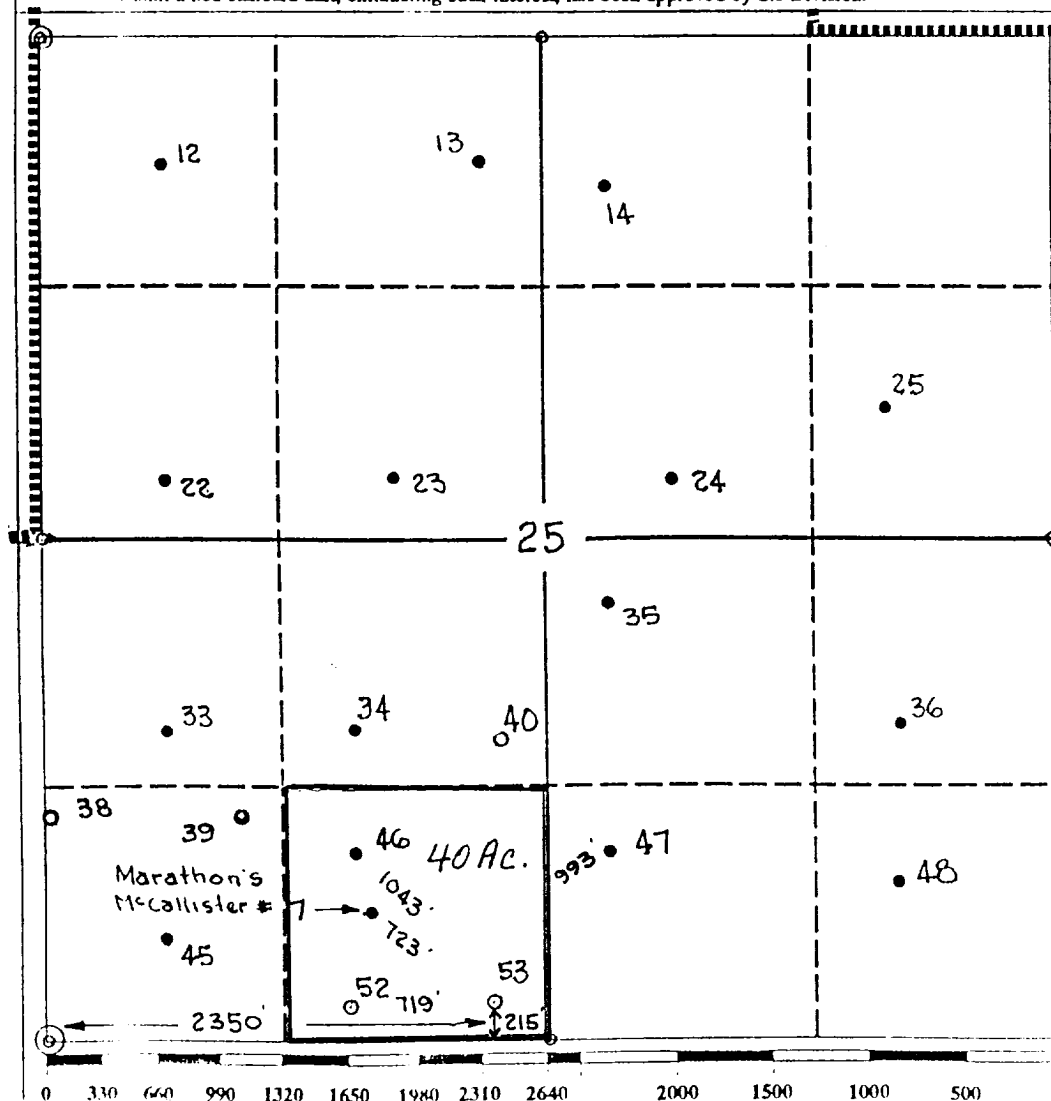
DISTRICT III
1000 Rio Brazos Rd., Aztec, NM 87410

WELL LOCATION AND ACREAGE DEDICATION PLAT

All Distances must be from the outer boundaries of the section

Operator TEXACO EXPL. AND PROD. Inc.			Lease VACUUM GLORIETA WEST UNIT		Well No. 53
Unit Letter N	Section 25	Township 17-South	Range 34-East	County Lea	
Actual Footage Location of Well: 215 feet from the South line and 2350 feet from the West line					
Ground level Elev. 4003	Producing Formation Glorieta; Paddock		Pool Vacuum Glorieta Pool	Dedicated Acreage: 40 Acres	

- Outline the acreage dedicated to the subject well by colored pencil or hatchure marks on the plat below.
- If more than one lease is dedicated to the well, outline each and identify the ownership thereof (both as to working interest and royalty).
- If more than one lease of different ownership is dedicated to the well, have the interest of all owners been consolidated by communization, unitization, force-pooling, etc.?
☒ Yes ☐ No If answer is "yes" type of consolidation Unitization
If answer is "no" list the owners and tract descriptions which have actually been consolidated. (Use reverse side of this form if necessary).
No allowable will be assigned to the well until all interests have been consolidated (by communization, unitization, forced-pooling, or otherwise) or until a non-standard unit, eliminating such interest, has been approved by the Division.



OPERATOR CERTIFICATION

I hereby certify that the information contained herein is true and complete to the best of my knowledge and belief.

Signature
Royce D. Mariott
Printed Name
Royce D. Mariott
Position
Division Surveyor
Company
Texaco Expl. & Prod.
Date
September 2, 1992

SURVEYOR CERTIFICATION

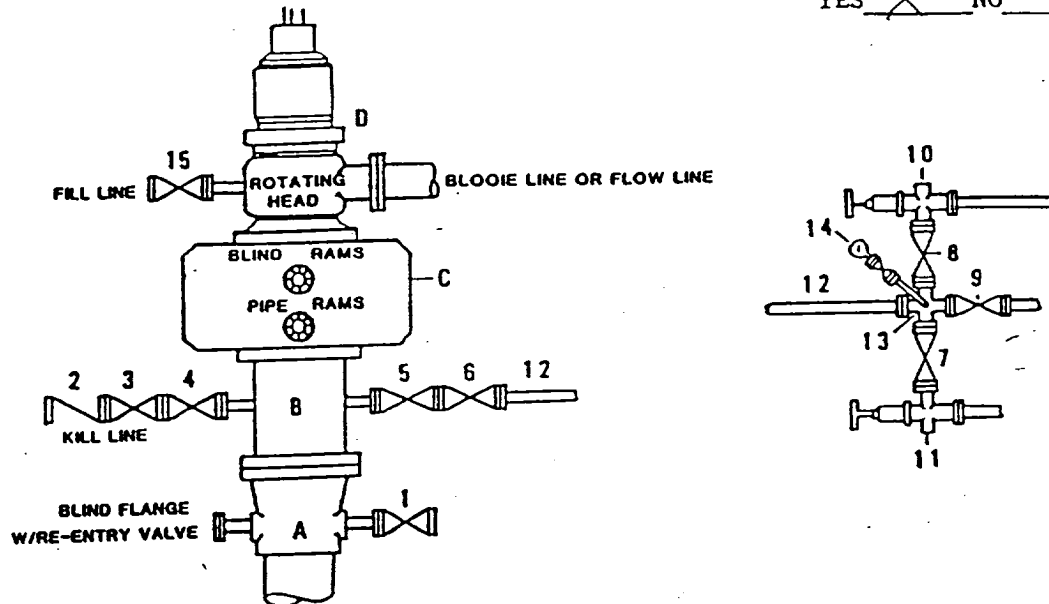
I hereby certify that the well location shown on this plat was plotted from field notes of actual surveys made by me or under my supervision, and that the same is true and correct to the best of my knowledge and belief.

Date Surveyed
August 27, 1992
Signature & Seal of Professional Surveyor
John S. Piper
Certificate No.
7054 J.S. Piper

DRILLING CONTROL CONDITION II-B 3000 WP

FOR AIR DRILLING OR
WHERE NITROGEN OR AIR BLOWS ARE EXPECTED

H₂S TRIM REQUIRED
YES ☒ NO ☐



DRILLING CONTROL

MATERIAL LIST - CONDITION II - B

- A Texaco Wellhead
- B 3000# W.P. drilling spool with a 2" minimum flanged outlet for kill line and 3" minimum flanged outlet for choke line.
- C 3000# W.P. Dual ram type preventer, hydraulic operated with 1" steel, 3000# W.P. control lines (where sub-structure height is adequate, 2 - 3000# W.P. single ram type preventers may be utilized).
- D Rotating Head with fill up outlet and extended Bore Line.
- 1,3,4, 7,8, 2" minimum 3000# W.P. flanged full opening steel gate valve, or Halliburton Lo Torc Plug valve.
- 2 2" minimum 3000# W.P. back pressure valve.
- 5,6,9 3" minimum 3000# W.P. flanged full opening steel gate valve, or Halliburton Lo Torc Plug valve.
- 12 3" minimum schedule 80, Grade "B", seamless line pipe.
- 13 2" minimum x 3" minimum 3000# W.P. flanged cross.
- 10,11 2" minimum 3000# W.P. adjustable choke bodies.
- 14 Cameron Mud Gauge or equivalent (location optional in choke line).
- 15 2" minimum 3000# W.P. flanged or threaded full opening steel gate valve, or Halliburton Lo Torc Plug valve.



TEXACO, INC.
MIDLAND DIVISION
MIDLAND TEXAS



SCALE	DATE	EST. NO.	DRG. NO.
DRAWN BY			
CHECKED BY			

EXHIBIT C