

OIL CONSERVATION DIVISION  
2040 South Pacheco  
Santa Fe, NM 87505

District I  
PO Box 1980, Hobbs, NM 88241-1980  
District II  
811 S. 1st Street, Artesia, NM 88210-2834  
District III  
1000 Rio Brazos Rd., Aztec, NM 87410  
District IV  
2040 South Pacheco, Santa Fe, NM 87505

AMENDED REPORT

APPLICATION FOR PERMIT TO DRILL, RE-ENTER, DEEPEN, PLUGBACK, OR ADD A ZONE

<sup>1</sup> Operator name and Address Phillips Petroleum Company 4001 Penbrook Street Odessa, TX 79762		<sup>2</sup> OGRID Number 017643
<sup>4</sup> Property Code 9166	<sup>5</sup> Property Name VACUUM GB/SA UNIT EAST TRACT 3127	<sup>3</sup> API Number 30-0 25-34836
		<sup>6</sup> Well No. 3994

<sup>7</sup> Surface Location									
UL or lot no.	Section	Township	Range	Lot. Idn	Feet from the	North/South Line	Feet from the	East/West line	County
P	31	17-S	35-E		10	SOUTH	660	EAST	LEA

<sup>8</sup> Proposed Bottom Hole Location If Different From Surface									
UL or lot no.	Section	Township	Range	Lot. Idn	Feet from the	North/South Line	Feet from the	East/West line	County
<sup>9</sup> Proposed Pool 1 VACUUM GRAYBURG SAN ANDRES					<sup>10</sup> Proposed Pool 2				

<sup>11</sup> Work Type Code N	<sup>12</sup> Well Type Code I	<sup>13</sup> Cable/Rotary R	<sup>14</sup> Lease Type Code S	<sup>15</sup> Ground Level Elevation 3971'
<sup>16</sup> Multiple N	<sup>17</sup> Proposed Depth 4850'	<sup>18</sup> Formation GRAYBURG/SANANDRES	<sup>19</sup> Contractor TO BE DETERMINED	<sup>20</sup> Spud Date UPON APPROVAL

<sup>21</sup> Proposed Casing and Cement Program					
Hole Size	Casing Size	Casing weight/foot	Setting Depth	Sacks of Cement	Estimated TOC
11"	8-5/8"	24#	1550'	550	SURFACE
7-7/8"	5-1/2"	15.5#	4850'	900	SURFACE

<sup>22</sup> Describe the proposed program. If this application is to DEEPEN or PLUG BACK give the data on the present productive zone and proposed new productive zone. Describe the blowout prevention program, if any. Use additional sheets if necessary

**\*\*BOP SCHEMATIC/DRILLING PROGRAM ATTACHED\*\***

Approval for drilling only -- CANNOT produce until Non-Standard Location is approved in Santa Fe.

Permit Expires 1 Year From Approval  
Date Unless Drilling Underway

<sup>23</sup> I hereby certify that the information given above is true and complete to the best of my knowledge and belief.

Signature: *L. M. Sanders*  
Printed name: L. M. SANDERS 01705/00 915/368-1488  
Title: SUPV., REGULATION/PRORATION

OIL CONSERVATION DIVISION	
Approved by: ORIGINAL SIGNATURE OF L. M. SANDERS	DISTRICT I SUPERVISOR
Title:	
Approval Date: JAN 11 2000	Expiration Date:

*Handwritten initials*

DISTRICT I  
P.O. Box 1960, Hobbs, NM 88241-1960

DISTRICT II  
P.O. Drawer 2D, Artesia, NM 88211-0719

DISTRICT III  
1000 Rio Brazos Rd., Artec, NM 87410

DISTRICT IV  
P.O. Box 2088, Santa Fe, NM 87504-2088

State of New Mexico

Energy, Minerals and Natural Resources Department

Form C-102  
Revised February 10, 1994  
Submit to Appropriate District Office  
State Lease - 4 Copies  
Fee Lease - 3 Copies

OIL CONSERVATION DIVISION

P.O. Box 2088  
Santa Fe, New Mexico 87504-2088

AMENDED REPORT

WELL LOCATION AND ACREAGE DEDICATION PLAT

API Number 30-025-34836	Pool Code 62180	Pool Name Vacuum Grayburg San Andres
Property Code 009166	Property Name EVGSAU TRACT 3127	Well Number 399W
OGRID No. 017643	Operator Name PHILLIPS PETROLEUM COMPANY	Elevation 3971

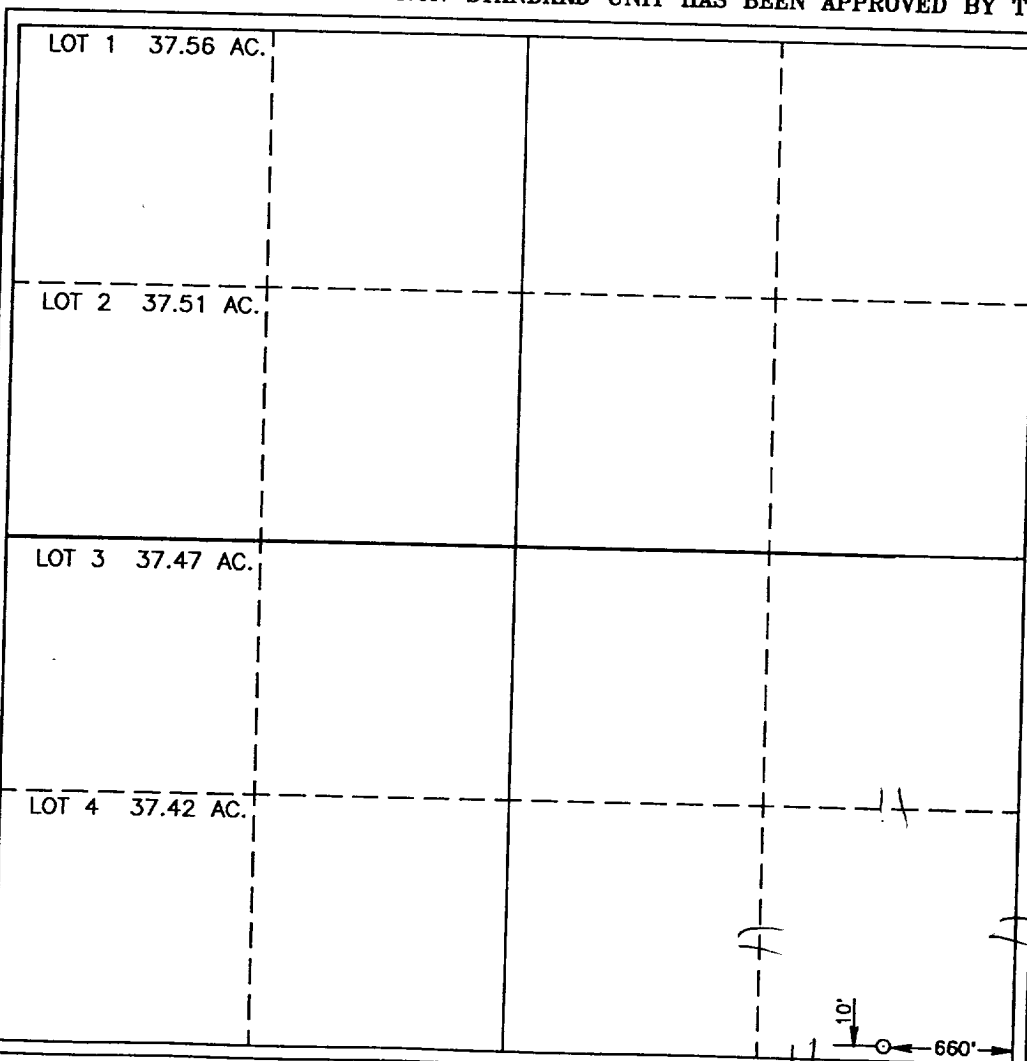
Surface Location

UL or lot No.	Section	Township	Range	Lot Idn	Feet from the	North/South line	Feet from the	East/West line	County
P	31	17 S	35 E		10	SOUTH	660	EAST	LEA

Bottom Hole Location If Different From Surface

UL or lot No.	Section	Township	Range	Lot Idn	Feet from the	North/South line	Feet from the	East/West line	County
Dedicated Acres 40	Joint or Infill	Consolidation Code	Order No.						

NO ALLOWABLE WILL BE ASSIGNED TO THIS COMPLETION UNTIL ALL INTERESTS HAVE BEEN CONSOLIDATED OR A NON-STANDARD UNIT HAS BEEN APPROVED BY THE DIVISION



**OPERATOR CERTIFICATION**

I hereby certify the the information contained herein is true and complete to the best of my knowledge and belief.

*L.M. Sanders*  
Signature

L. M. Sanders  
Printed Name

Supv. Regulation/  
Title Proration

12/30/99  
Date

---

**SURVEYOR CERTIFICATION**

I hereby certify that the well location shown on this plat was plotted from field notes of actual surveys made by me or under my supervision, and that the same is true and correct to the best of my belief.

NOVEMBER 24, 1997

Date Surveyed JLP

Signature: *Ronald S. Edson*  
Professional Surveyor

RONALD S. EDSON  
NEW MEXICO  
3239  
P.O. Box 87-116740

Certificate No. RONALD S. EDSON, 3239  
CAROL EDSON, 12841  
WILLIAM McDONALD, 12185

ELF  

---

ABOVE DATE DOES NOT  
INDICATE WHEN  
CONFIDENTIAL LOGS  
WILL BE RELEASED

**PRELIMINARY DRILLING PROGRAM**

Depth	Type	Weight	Remarks
1550'	Fresh Water	8.4	Circulate pits or reserves, visc. 28
1550-4700	Brine	10	Circulate reserves, Lime pH 9, visc. 29
4700-4850	Brine	10	Starch for seepage, visc. 31

TUBULAR PROGRAM									
String Type	Hole Size	Depth	Feet	Casing Diameter	Weight	Grade	Connect. Type	ERW/Seamless	Critical Inspectn
Surface	11"	1550'	1550'	8 5/8"	24 #	WC-50	STC	ERW	No
Prod.	7 7/8"	4850'	4850'	5 1/2"	15.5 #	WC-50	LTC	ERW	No
Tubing	Prod.	4750'	4750'	2 7/8"	6.5 #	WC-50	EUE	ERW	No

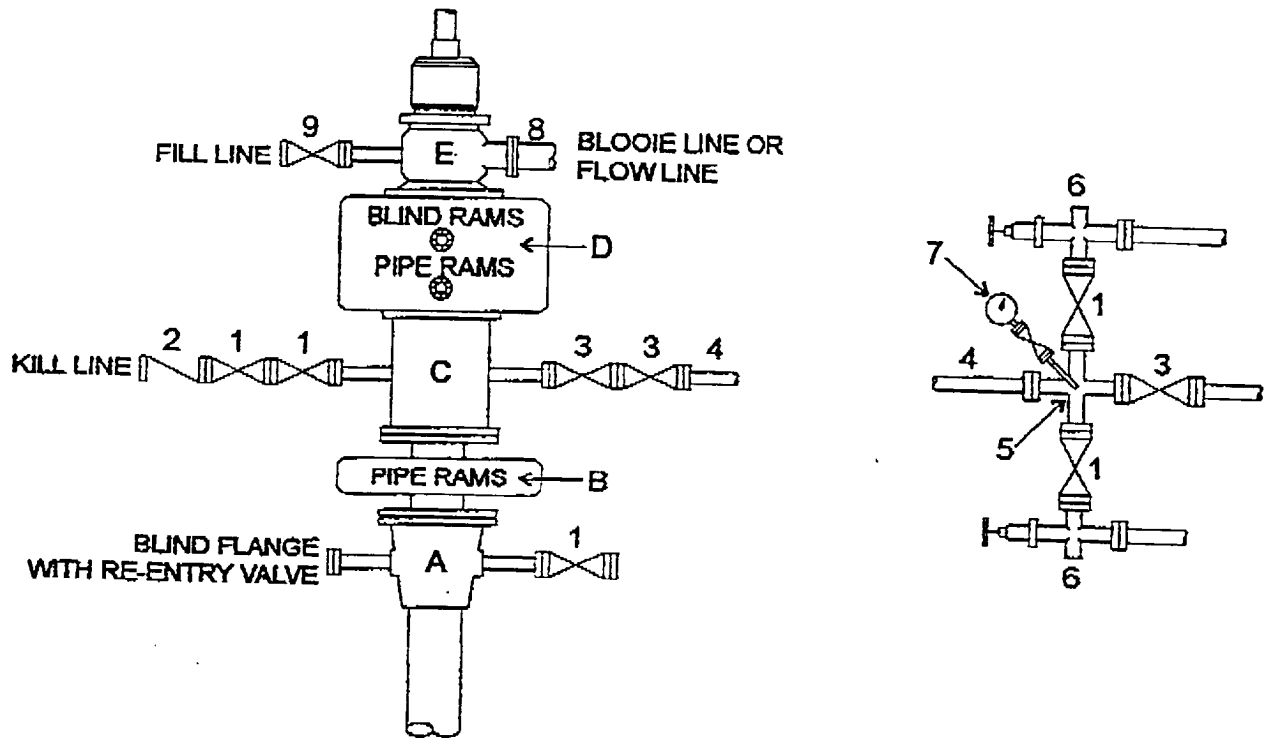
Note: Pipe to end up in hole from top to bottom as shown.

CEMENT PROGRAM								
String Type	DV Depth	Stage Lead/Tail	Cement Bottom	Cement Top	No Sacks	Cement Type	Cement Yield	Cement Weight
Surface		Lead	1150'	Surface	400	"C"	1.69	
		Tail	1550'	1150'	150	"C"/gel	1.34	13.5
Production		Lead	4550'	Surface	800	35/65po	1.94	12.8
		Tail	4850'	4550'	100	"H"	1.18	16.6

BOP PROGRAM		
Hole Size	Exhibit	Pressure Rating
	See Exhibit C (drill manual)	3M

Remarks: Potential water flows from the Salado at +/- 1700'  
 Install H2S equipment from 1550' - TD

H<sub>2</sub>S Trim Required  
 Yes \_\_\_ No \_\_\_



### MATERIALS LIST

Item	Description	Qty.
A	Texaco wellhead.	1
B	5000# W.P. single ram type preventer, hydraulic operated with 1" steel, 5000# W.P. control lines.	1
C	3000# W.P. drilling spool with a 2" minimum flanged outlet for kill line and 3" minimum flanged outlet for choke line.	1
D	3000# W.P. dual ram type preventer, hydraulic operated 1" steel, 3000# W.P. control lines (where substructure height is adequate, 2 - 3000# W.P. single ram type preventers may be utilized.)	1
E	Rotating head with fill-up outlet and extended Blooie line.	1
1	2" minimum 3000# W.P. flanged full opening steel gate valve, or Halliburton Lo Torc plug valve.	5
2	2" minimum 3000# W.P. back pressure valve.	1
3	3" minimum 3000# W.P. flanged full opening steel gate valve, or Halliburton Lo Torc plug valve.	3
4	3" minimum schedule 80, Grade "B", seamless line pipe.	
5	2" minimum x 3" minimum 3000# W.P. flanged cross.	1
6	2" minimum 3000# W.P. adjustable choke body.	2
7	Cameron Mud Gauge or equivalent (location optional in choke line).	1
8	8-5/8" minimum steel flow line.	
9	2" minimum 3000# W.P. flanged or threaded full opening steel gate valve, or Halliburton Lo Torc plug valve.	1



Drilling Control  
 Condition II-B 3000# W.P.  
 For air drilling or where nitrogen  
 or air blows are expected

Rev. 4/1/98

Exhibit C  
 Texaco  
 Denver Region  
 Denver, Colorado

