

T  
20  
8

U. S. LAND OFFICE Las Cruces  
SERIAL NUMBER 06994  
LEASE OR PERMIT TO PROSPECT Federal #7 Lease

UNITED STATES  
DEPARTMENT OF THE INTERIOR  
GEOLOGICAL SURVEY  
RECEIVED  
MAY 8 1959  
U. S. GEOLOGICAL SURVEY  
HOBBS, NEW MEXICO

LOG OF OIL OR GAS WELL

LOCATE WELL CORRECTLY  
A-35-2

Company Amerada Petroleum Corp. Address Dresser "D" - Monument, N.M.  
Lessor or Tract Federal #7 Lease Field Undesignated State New Mexico  
Well No. 1 Sec. 11 T. 20N R. 35E Meridian N.M.P. County Lea  
Location 1960 ft.  $\left\{ \begin{matrix} N \\ S \end{matrix} \right\}$  of E Line and 1200 ft.  $\left\{ \begin{matrix} E \\ W \end{matrix} \right\}$  of W Line of Sec. 11 Elevation 3671' SP  
(Derrick floor relative to sea level)

The information given herewith is a complete and correct record of the well and all work done thereon so far as can be determined from all available records.

Signed [Signature] Title Asst. Dist. Superintendent  
Date May 5, 1959

The summary on this page is for the condition of the well at above date.

Commenced drilling January 22, 19 59 Finished drilling March 21, 19 59

OIL OR GAS SANDS OR ZONES

(Denote gas by G)  
No. 1, from 4952' to 4960' No. 4, from \_\_\_\_\_ to \_\_\_\_\_  
No. 2, from \_\_\_\_\_ to \_\_\_\_\_ No. 5, from \_\_\_\_\_ to \_\_\_\_\_  
No. 3, from \_\_\_\_\_ to \_\_\_\_\_ No. 6, from \_\_\_\_\_ to \_\_\_\_\_

IMPORTANT WATER SANDS

No. 1, from \_\_\_\_\_ to \_\_\_\_\_ No. 3, from \_\_\_\_\_ to \_\_\_\_\_  
No. 2, from \_\_\_\_\_ to \_\_\_\_\_ No. 4, from \_\_\_\_\_ to \_\_\_\_\_

CASING RECORD

| Size casing   | Weight per foot | Threads per inch | Make        | Amount      | Kind of shoe | Cut and pulled from | Perforated |    | Purpose |
|---------------|-----------------|------------------|-------------|-------------|--------------|---------------------|------------|----|---------|
|               |                 |                  |             |             |              |                     | From       | To |         |
| <u>7"</u>     | <u>17 1/2</u>   | <u>8</u>         | <u>Hall</u> | <u>297'</u> | <u>Guide</u> | <u>None</u>         |            |    |         |
| <u>2-7/8"</u> | <u>6.5</u>      | <u>8</u>         | <u>Hall</u> | <u>200'</u> | <u>Flare</u> | <u>None</u>         |            |    |         |

MUDDING AND CEMENTING RECORD

| Size casing   | Where set       | Number sacks of cement | Method used        | Mud gravity | Amount of mud used |
|---------------|-----------------|------------------------|--------------------|-------------|--------------------|
| <u>7"</u>     | <u>314'</u>     | <u>200</u>             | <u>Halliburton</u> |             |                    |
| <u>2-7/8"</u> | <u>505 1/2'</u> | <u>75</u>              | <u>"</u>           |             |                    |

PLUGS AND ADAPTERS

Heaving plug—Material \_\_\_\_\_ Length \_\_\_\_\_ Depth set \_\_\_\_\_  
Adapters—Material \_\_\_\_\_ Size \_\_\_\_\_

SHOOTING RECORD

| Size | Shell used            | Explosive used        | Quantity                | Date | Depth shot | Depth cleaned out   |
|------|-----------------------|-----------------------|-------------------------|------|------------|---|
|      | <u>Acidized perf.</u> | <u>4952' to 4960'</u> | <u>w/ 500 gals acid</u> |      |            | <u>followed with sand oil fracture of 7,518 gals oil and 25,100 fracs sand.</u> |

TOOLS USED

Rotary tools were used from 0 feet to 5783' feet, and from \_\_\_\_\_ feet to \_\_\_\_\_ feet  
Cable tools were used from \_\_\_\_\_ feet to \_\_\_\_\_ feet, and from \_\_\_\_\_ feet to \_\_\_\_\_ feet

DATES

\_\_\_\_\_, 19\_\_\_\_ Put to producing Dry Hole., 19\_\_\_\_

The production for the first 24 hours was \_\_\_\_\_ barrels of fluid of which \_\_\_\_\_% was oil; \_\_\_\_\_% emulsion; \_\_\_\_\_% water; and \_\_\_\_\_% sediment. Gravity, °Bé. \_\_\_\_\_

If gas well, cu. ft. per 24 hours \_\_\_\_\_ Gallons gasoline per 1,000 cu. ft. of gas \_\_\_\_\_

Rock pressure, lbs. per sq. in. \_\_\_\_\_

EMPLOYEES

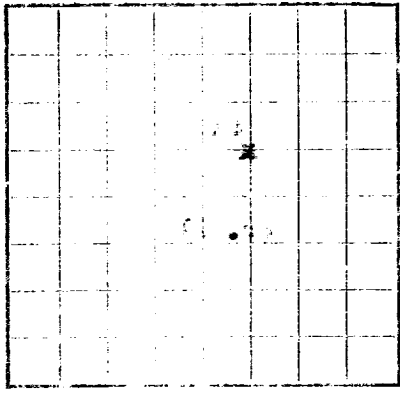
T. L. Henson, Driller A. S. Briggan, Driller  
W. A. Morphis, Driller \_\_\_\_\_, Driller

FORMATION RECORD

| FROM—       | TO—            | TOTAL FEET  | FORMATION                                     |
|-------------|----------------|-------------|---|
| <u>0</u>    | <u>6</u>       | <u>6</u>    | <u>Collar</u>                                 |
| <u>6</u>    | <u>1960</u>    | <u>1954</u> | <u>Sand and Shale</u>                         |
| <u>1960</u> | <u>2090</u>    | <u>130</u>  | <u>Anhydrite</u>                              |
| <u>2090</u> | <u>3450</u>    | <u>1360</u> | <u>Salt and Anhydrite</u>                     |
| <u>3450</u> | <u>5090</u>    | <u>1640</u> | <u>Dolomite, Anhydrite and Sand</u>           |
| <u>5090</u> | <u>5783 TD</u> | <u>693</u>  | <u>Dolomite, Anhydrite and trace of Chert</u> |

FOLD MARK

U. S. LAND OFFICE  
SERIAL NUMBER  
LEASE OR PERMIT TO PRODUCE



LOCATE WELL CORRECTLY

UNITED STATES  
DEPARTMENT OF THE INTERIOR  
GEOLOGICAL SURVEY  
U. S. GEOLOGICAL SURVEY  
HOUSTON, TEXAS

LOG OF OIL OR GAS WELL

Company Name: \_\_\_\_\_  
Address: \_\_\_\_\_  
Field: \_\_\_\_\_  
Well No.: \_\_\_\_\_  
Location: \_\_\_\_\_  
The information given herewith is a complete and correct record of the well and all work done thereon so far as can be obtained from all available records.

Date: \_\_\_\_\_  
The summary on this page is for the condition of the well at above date.  
Commenced drilling: \_\_\_\_\_  
Finished drilling: \_\_\_\_\_

OIL OR GAS SANDS OR ZONES

|                           |               |
|---------------------------|---------------|
| No. 1 from _____ to _____ | (Dip as by G) |
| No. 2 from _____ to _____ |               |
| No. 3 from _____ to _____ |               |
| No. 4 from _____ to _____ |               |
| No. 5 from _____ to _____ |               |

It is of the greatest importance to have a complete history of the well. Please state in detail the dates of drilling, together with the reasons for the work and its results. If there were any changes made in the casing, state fully, and if any casing was "sidetracked" or left in the well, give its size and location. If the well has been dynamited, give date, size, position, and number of plugs or bridges were put in to test for water, state kind of material used, position, and results of pumping or bailing.

HISTORY OF OIL OR GAS WELL

| DATE | DEPTH   | DESCRIPTION   | REMARKS |
|------|---------|---|---------|
| 1960 | 0-1/4   | 1/2" hole at 110' and cemented with 300 lb cement. Drilled to 110'. |         |
| 1960 | 1-1/4   | 1/2" hole at 110' and cemented with 300 lb cement. Drilled to 110'. |         |
| 1960 | 2-1/4   | 1/2" hole at 110' and cemented with 300 lb cement. Drilled to 110'. |         |
| 1960 | 3-1/4   | 1/2" hole at 110' and cemented with 300 lb cement. Drilled to 110'. |         |
| 1960 | 4-1/4   | 1/2" hole at 110' and cemented with 300 lb cement. Drilled to 110'. |         |
| 1960 | 5-1/4   | 1/2" hole at 110' and cemented with 300 lb cement. Drilled to 110'. |         |
| 1960 | 6-1/4   | 1/2" hole at 110' and cemented with 300 lb cement. Drilled to 110'. |         |
| 1960 | 7-1/4   | 1/2" hole at 110' and cemented with 300 lb cement. Drilled to 110'. |         |
| 1960 | 8-1/4   | 1/2" hole at 110' and cemented with 300 lb cement. Drilled to 110'. |         |
| 1960 | 9-1/4   | 1/2" hole at 110' and cemented with 300 lb cement. Drilled to 110'. |         |
| 1960 | 10-1/4  | 1/2" hole at 110' and cemented with 300 lb cement. Drilled to 110'. |         |
| 1960 | 11-1/4  | 1/2" hole at 110' and cemented with 300 lb cement. Drilled to 110'. |         |
| 1960 | 12-1/4  | 1/2" hole at 110' and cemented with 300 lb cement. Drilled to 110'. |         |
| 1960 | 13-1/4  | 1/2" hole at 110' and cemented with 300 lb cement. Drilled to 110'. |         |
| 1960 | 14-1/4  | 1/2" hole at 110' and cemented with 300 lb cement. Drilled to 110'. |         |
| 1960 | 15-1/4  | 1/2" hole at 110' and cemented with 300 lb cement. Drilled to 110'. |         |
| 1960 | 16-1/4  | 1/2" hole at 110' and cemented with 300 lb cement. Drilled to 110'. |         |
| 1960 | 17-1/4  | 1/2" hole at 110' and cemented with 300 lb cement. Drilled to 110'. |         |
| 1960 | 18-1/4  | 1/2" hole at 110' and cemented with 300 lb cement. Drilled to 110'. |         |
| 1960 | 19-1/4  | 1/2" hole at 110' and cemented with 300 lb cement. Drilled to 110'. |         |
| 1960 | 20-1/4  | 1/2" hole at 110' and cemented with 300 lb cement. Drilled to 110'. |         |
| 1960 | 21-1/4  | 1/2" hole at 110' and cemented with 300 lb cement. Drilled to 110'. |         |
| 1960 | 22-1/4  | 1/2" hole at 110' and cemented with 300 lb cement. Drilled to 110'. |         |
| 1960 | 23-1/4  | 1/2" hole at 110' and cemented with 300 lb cement. Drilled to 110'. |         |
| 1960 | 24-1/4  | 1/2" hole at 110' and cemented with 300 lb cement. Drilled to 110'. |         |
| 1960 | 25-1/4  | 1/2" hole at 110' and cemented with 300 lb cement. Drilled to 110'. |         |
| 1960 | 26-1/4  | 1/2" hole at 110' and cemented with 300 lb cement. Drilled to 110'. |         |
| 1960 | 27-1/4  | 1/2" hole at 110' and cemented with 300 lb cement. Drilled to 110'. |         |
| 1960 | 28-1/4  | 1/2" hole at 110' and cemented with 300 lb cement. Drilled to 110'. |         |
| 1960 | 29-1/4  | 1/2" hole at 110' and cemented with 300 lb cement. Drilled to 110'. |         |
| 1960 | 30-1/4  | 1/2" hole at 110' and cemented with 300 lb cement. Drilled to 110'. |         |
| 1960 | 31-1/4  | 1/2" hole at 110' and cemented with 300 lb cement. Drilled to 110'. |         |
| 1960 | 32-1/4  | 1/2" hole at 110' and cemented with 300 lb cement. Drilled to 110'. |         |
| 1960 | 33-1/4  | 1/2" hole at 110' and cemented with 300 lb cement. Drilled to 110'. |         |
| 1960 | 34-1/4  | 1/2" hole at 110' and cemented with 300 lb cement. Drilled to 110'. |         |
| 1960 | 35-1/4  | 1/2" hole at 110' and cemented with 300 lb cement. Drilled to 110'. |         |
| 1960 | 36-1/4  | 1/2" hole at 110' and cemented with 300 lb cement. Drilled to 110'. |         |
| 1960 | 37-1/4  | 1/2" hole at 110' and cemented with 300 lb cement. Drilled to 110'. |         |
| 1960 | 38-1/4  | 1/2" hole at 110' and cemented with 300 lb cement. Drilled to 110'. |         |
| 1960 | 39-1/4  | 1/2" hole at 110' and cemented with 300 lb cement. Drilled to 110'. |         |
| 1960 | 40-1/4  | 1/2" hole at 110' and cemented with 300 lb cement. Drilled to 110'. |         |
| 1960 | 41-1/4  | 1/2" hole at 110' and cemented with 300 lb cement. Drilled to 110'. |         |
| 1960 | 42-1/4  | 1/2" hole at 110' and cemented with 300 lb cement. Drilled to 110'. |         |
| 1960 | 43-1/4  | 1/2" hole at 110' and cemented with 300 lb cement. Drilled to 110'. |         |
| 1960 | 44-1/4  | 1/2" hole at 110' and cemented with 300 lb cement. Drilled to 110'. |         |
| 1960 | 45-1/4  | 1/2" hole at 110' and cemented with 300 lb cement. Drilled to 110'. |         |
| 1960 | 46-1/4  | 1/2" hole at 110' and cemented with 300 lb cement. Drilled to 110'. |         |
| 1960 | 47-1/4  | 1/2" hole at 110' and cemented with 300 lb cement. Drilled to 110'. |         |
| 1960 | 48-1/4  | 1/2" hole at 110' and cemented with 300 lb cement. Drilled to 110'. |         |
| 1960 | 49-1/4  | 1/2" hole at 110' and cemented with 300 lb cement. Drilled to 110'. |         |
| 1960 | 50-1/4  | 1/2" hole at 110' and cemented with 300 lb cement. Drilled to 110'. |         |
| 1960 | 51-1/4  | 1/2" hole at 110' and cemented with 300 lb cement. Drilled to 110'. |         |
| 1960 | 52-1/4  | 1/2" hole at 110' and cemented with 300 lb cement. Drilled to 110'. |         |
| 1960 | 53-1/4  | 1/2" hole at 110' and cemented with 300 lb cement. Drilled to 110'. |         |
| 1960 | 54-1/4  | 1/2" hole at 110' and cemented with 300 lb cement. Drilled to 110'. |         |
| 1960 | 55-1/4  | 1/2" hole at 110' and cemented with 300 lb cement. Drilled to 110'. |         |
| 1960 | 56-1/4  | 1/2" hole at 110' and cemented with 300 lb cement. Drilled to 110'. |         |
| 1960 | 57-1/4  | 1/2" hole at 110' and cemented with 300 lb cement. Drilled to 110'. |         |
| 1960 | 58-1/4  | 1/2" hole at 110' and cemented with 300 lb cement. Drilled to 110'. |         |
| 1960 | 59-1/4  | 1/2" hole at 110' and cemented with 300 lb cement. Drilled to 110'. |         |
| 1960 | 60-1/4  | 1/2" hole at 110' and cemented with 300 lb cement. Drilled to 110'. |         |
| 1960 | 61-1/4  | 1/2" hole at 110' and cemented with 300 lb cement. Drilled to 110'. |         |
| 1960 | 62-1/4  | 1/2" hole at 110' and cemented with 300 lb cement. Drilled to 110'. |         |
| 1960 | 63-1/4  | 1/2" hole at 110' and cemented with 300 lb cement. Drilled to 110'. |         |
| 1960 | 64-1/4  | 1/2" hole at 110' and cemented with 300 lb cement. Drilled to 110'. |         |
| 1960 | 65-1/4  | 1/2" hole at 110' and cemented with 300 lb cement. Drilled to 110'. |         |
| 1960 | 66-1/4  | 1/2" hole at 110' and cemented with 300 lb cement. Drilled to 110'. |         |
| 1960 | 67-1/4  | 1/2" hole at 110' and cemented with 300 lb cement. Drilled to 110'. |         |
| 1960 | 68-1/4  | 1/2" hole at 110' and cemented with 300 lb cement. Drilled to 110'. |         |
| 1960 | 69-1/4  | 1/2" hole at 110' and cemented with 300 lb cement. Drilled to 110'. |         |
| 1960 | 70-1/4  | 1/2" hole at 110' and cemented with 300 lb cement. Drilled to 110'. |         |
| 1960 | 71-1/4  | 1/2" hole at 110' and cemented with 300 lb cement. Drilled to 110'. |         |
| 1960 | 72-1/4  | 1/2" hole at 110' and cemented with 300 lb cement. Drilled to 110'. |         |
| 1960 | 73-1/4  | 1/2" hole at 110' and cemented with 300 lb cement. Drilled to 110'. |         |
| 1960 | 74-1/4  | 1/2" hole at 110' and cemented with 300 lb cement. Drilled to 110'. |         |
| 1960 | 75-1/4  | 1/2" hole at 110' and cemented with 300 lb cement. Drilled to 110'. |         |
| 1960 | 76-1/4  | 1/2" hole at 110' and cemented with 300 lb cement. Drilled to 110'. |         |
| 1960 | 77-1/4  | 1/2" hole at 110' and cemented with 300 lb cement. Drilled to 110'. |         |
| 1960 | 78-1/4  | 1/2" hole at 110' and cemented with 300 lb cement. Drilled to 110'. |         |
| 1960 | 79-1/4  | 1/2" hole at 110' and cemented with 300 lb cement. Drilled to 110'. |         |
| 1960 | 80-1/4  | 1/2" hole at 110' and cemented with 300 lb cement. Drilled to 110'. |         |
| 1960 | 81-1/4  | 1/2" hole at 110' and cemented with 300 lb cement. Drilled to 110'. |         |
| 1960 | 82-1/4  | 1/2" hole at 110' and cemented with 300 lb cement. Drilled to 110'. |         |
| 1960 | 83-1/4  | 1/2" hole at 110' and cemented with 300 lb cement. Drilled to 110'. |         |
| 1960 | 84-1/4  | 1/2" hole at 110' and cemented with 300 lb cement. Drilled to 110'. |         |
| 1960 | 85-1/4  | 1/2" hole at 110' and cemented with 300 lb cement. Drilled to 110'. |         |
| 1960 | 86-1/4  | 1/2" hole at 110' and cemented with 300 lb cement. Drilled to 110'. |         |
| 1960 | 87-1/4  | 1/2" hole at 110' and cemented with 300 lb cement. Drilled to 110'. |         |
| 1960 | 88-1/4  | 1/2" hole at 110' and cemented with 300 lb cement. Drilled to 110'. |         |
| 1960 | 89-1/4  | 1/2" hole at 110' and cemented with 300 lb cement. Drilled to 110'. |         |
| 1960 | 90-1/4  | 1/2" hole at 110' and cemented with 300 lb cement. Drilled to 110'. |         |
| 1960 | 91-1/4  | 1/2" hole at 110' and cemented with 300 lb cement. Drilled to 110'. |         |
| 1960 | 92-1/4  | 1/2" hole at 110' and cemented with 300 lb cement. Drilled to 110'. |         |
| 1960 | 93-1/4  | 1/2" hole at 110' and cemented with 300 lb cement. Drilled to 110'. |         |
| 1960 | 94-1/4  | 1/2" hole at 110' and cemented with 300 lb cement. Drilled to 110'. |         |
| 1960 | 95-1/4  | 1/2" hole at 110' and cemented with 300 lb cement. Drilled to 110'. |         |
| 1960 | 96-1/4  | 1/2" hole at 110' and cemented with 300 lb cement. Drilled to 110'. |         |
| 1960 | 97-1/4  | 1/2" hole at 110' and cemented with 300 lb cement. Drilled to 110'. |         |
| 1960 | 98-1/4  | 1/2" hole at 110' and cemented with 300 lb cement. Drilled to 110'. |         |
| 1960 | 99-1/4  | 1/2" hole at 110' and cemented with 300 lb cement. Drilled to 110'. |         |
| 1960 | 100-1/4 | 1/2" hole at 110' and cemented with 300 lb cement. Drilled to 110'. |         |