

DISTRICT I  
P.O. Box 1980, Hobbs, NM 88240

**OIL CONSERVATION DIVISION**  
P.O. Box 2088  
Santa Fe, New Mexico 87504-2088

DISTRICT II  
P.O. Drawer DD, Artesia, NM 88210

DISTRICT III  
1000 Rio Arriba Rd., Artesia, NM 87410

WELL API NO.	30-025-05646
5. Indicate Type of Lease	STATE <input type="checkbox"/> FEE <input checked="" type="checkbox"/>
6. State Oil & Gas Lease No.	

**SUNDRY NOTICES AND REPORTS ON WELLS**  
(DO NOT USE THIS FORM FOR PROPOSALS TO DRILL OR TO DEEPEN OR PLUG BACK TO A DIFFERENT RESERVOIR. USE "APPLICATION FOR PERMIT" (FORM C-101) FOR SUCH PROPOSALS.)

1. Type of Well: OIL WELL <input checked="" type="checkbox"/> GAS WELL <input type="checkbox"/> OTHER <input type="checkbox"/>	7. Lease Name or Unit Agreement Name NORTH MONUMENT G/SA UNIT BLK 5
2. Name of Operator AMERADA HESS CORPORATION	8. Well No. 2
3. Address of Operator P.O. DRAWER D, MONUMENT, NEW MEXICO 88265	9. Pool name or Wildcat EUNICE/MONUMENT <i>2B-8A</i>

4. Well Location  
Unit Letter B : 660 Feet From The NORTH Line and 1980 Feet From The EAST Line  
Section 19 Township 19S Range 37E NMPM LEA Country

10. Elevation (Show whether DF, RRB, RT, GR, etc.)

11. Check Appropriate Box to Indicate Nature of Notice, Report, or Other Data

NOTICE OF INTENTION TO:		SUBSEQUENT REPORT OF:	
PERFORM REMEDIAL WORK <input type="checkbox"/>	PLUG AND ABANDON <input type="checkbox"/>	REMEDIAL WORK <input type="checkbox"/>	ALTERING CASING <input type="checkbox"/>
TEMPORARILY ABANDON <input type="checkbox"/>	CHANGE PLANS <input type="checkbox"/>	COMMENCE DRILLING OPNS. <input type="checkbox"/>	PLUG AND ABANDONMENT <input type="checkbox"/>
PULL OR ALTER CASING <input type="checkbox"/>		CASING TEST AND CEMENT JOB <input checked="" type="checkbox"/>	
OTHER: <input type="checkbox"/>		OTHER: <i>Repaired Casing &amp; Tested</i> <input type="checkbox"/>	

12. Describe Proposed or Completed Operations (Clearly state all pertinent details, and give pertinent dates, including estimated date of starting any proposed work) SEE RULE 1103.

06-11-92 THRU 06-19-92

06-11-92 (24 HOUR REPORT): X-PERT WELL SERVICE RIGGED UP PULLING UNIT. TOH WITH A 1-1/4" x 20' POLISHED ROD WITH A 1-1/2" x 12' LINER, 7/8" x 6' PONY ROD, 43 7/8" SUCKER RODS, 109 3/4" SUCKER RODS AND A 2.0" x 1-1/4" x 16' PUMP. REMOVED 9-5/8" HINDERLITER TUBINGHEAD PACKING AND SLIPS AND INSTALLED AN ADAPTER FLANGE AND MANUAL BOP.

06-12-92 (24 HOUR REPORT): TOH WITH 122 JTS. 2-3/8" TBG., SN, 2-3/8" x 4' PERFORATED SUB AND A 2-3/8" MUD JOINT. TIH WITH 4-3/4" DRILL BIT AND BIT SUB ON 124 JTS 2-3/8" TBG. TAGGED UP AT 3,890'. NOTE: REPORTED PBD IS 3,884'. TOH WITH 124 JTS. 2-3/8" TBG., BIT SUB AND DRILL BIT. TIH WITH A 5-1/2" BAKER LOK-SET RETRIEVABLE BRIDGE PLUG, RETRIEVING TOOL AND SN ON 119 JTS. 2-3/8" TBG. SET RBP AT 3,751'. PULLED RETRIEVING TOOL TO 3,746' AND CIRCULATED HOLE CLEAN WITH 90 BBLs. FRESH WATER. PRESSURE TESTED CASING FROM 0' TO 3,751'. PRESSURE DECREASED FROM 420 PSI IN 6 MINS. CHECKED SURFACE-INTERMEDIATE AND (CONTINUED ON BACK)

I hereby certify that the information above is true and complete to the best of my knowledge and belief.

SIGNATURE Terry L. Harvey TITLE STAFF ASSISTANT DATE 07-22-92

TYPE OR PRINT NAME TERRY L. HARVEY TELEPHONE NO. 505-393-2144

(This space for State Use)

ORIGINAL SIGNED BY JERRY SESTON  
DISTRICT I SUPERVISOR

APPROVED BY \_\_\_\_\_ TITLE \_\_\_\_\_ DATE \_\_\_\_\_

CONDITIONS OF APPROVAL, IF ANY:

AUG 21 '92

INTERMEDIATE-PRODUCTION CASING ANNULI AND FOUND NO PRESSURE OR FLOW. TOH WITH 119 JTS. 2-3/8" TBG., SN AND RETRIEVING TOOL. TIH WITH 5-1/2" BAKER FULLBORE PACKER AND SN ON 2-3/8" TBG. RESET PKR. REPEATEDLY TO LOCATE CASING LEAK. FOUND CASING FROM 0' TO 824' WOULD LOOSE 10 PSI IN 16 MIN. FOUND CASING FROM 1,894' TO 3,751' WOULD LOOSE 0 PSI IN 15 MINS. LOCATE LEAKS FROM 824' TO 1,894'. RELEASED PKR.

06-13-92 (24 HOUR REPORT): CLOSED IN.

06-14-92 (24 HOUR REPORT): CLOSED IN.

06-15-92 (24 HOUR REPORT): TOH WITH 26 JTS. 2-3/8" TBG., SN AND 5-1/2" BAKER FULLBORE PACKER. FOUND MIDDLE PACKER ELEMENT HAD A 4" DEPRESSION. TIH WITH A REDRESSED 5-1/2" BAKER FULLBORE PACKER AND SN ON 118 JTS. 2-3/8" TBG. TESTED RBP AT 3,751' TO 2,000 PSI. RESET PKR. REPEATEDLY TO LOCATE BOTTOM LEAK. PRESSURE TESTED CASING FROM 2,024' TO 3,751'. PRESSURE TESTED CASING FROM 0' TO 824'. PRESSURE DECREASED FROM 540 PSI TO 525 PSI IN 32 MINS. TOH WITH 26 JTS. 2-3/8" TBG., SN AND PACKER. DUMPED 10 SKS. SAND ON RBP AT 3,751'. ESTIMATED TOP OF SAND AT 3,701'. TIH WITH 65 JTS. 2-3/8" TBG. TUBING SET OPEN ENDED AT 2,050'. HALLIBURTON SPOTTED A 150 SK. MATTIX CEMENT PLUG FROM 2,050' TO 559' AT 3.0 BPM AND 0 PSI. DISPLACED CEMENT WITH 2 BBLs. FRESH WATER. PULLED TUBING TO 503' AND REVERSED OUT AN ESTIMATED 0.5 BBL. CEMENT SLURRY TO PIT. TOH WITH 16 JTS. 2-3/8" TBG. TIH WITH A 5-1/2" BAKER FULLBORE PACKER AND SN ON 12 JTS. 2-3/8" TBG. SET PKR. AT 386' PRESSURED CASING-TUBING ANNULUS TO 400 PSI AND PUMPED 2.0 BBLs. FRESH WATER DOWN TBG. PRESSURE INCREASED TO 1,100 PSI AND DECREASED 0 PSI IN 10 MINS. CLOSED IN WITH 1,100 PSI ON TBG. AND 400 PSI ON CASING.

06-16-92 (24 HOUR REPORT): CLOSED IN. WAITING FOR CEMENT TO CURE.

06-17-92 (24 HOUR REPORT): CIP 0 PSI. CIP 200 PSI. RELEASED PKR. AND TOH WITH 12 JTS. 2-3/8" TBG., SN AND PACKER. TIH WITH A 4-3/4" DRILL BIT, BIT SUB, 6 3-1/2" DRILL COLLARS AND TOP SUB ON 29 JTS. 2-3/8" TBG. FOUND CEMENT TOP AT 1,104'. NOTE: ESTIMATED CEMENT TOP BASED ON DISPLACEMENT WAS 750'. DRILLED CEMENT FROM 1,104' TO 1,151' AND PRESSURE TESTED CASING FROM 0' TO 1,151'. PRESSURE DECREASED FROM 540 PSI TO 515 PSI IN 30 MINS. DRILLED CEMENT FROM 1,151' TO 1,532'. PULLED BIT TO 1,528', CIRCULATED HOLE CLEAN AND LAID DOWN POWER SWIVEL.

06-18-92 (24 HOUR REPORT): PICKED UP POWER SWIVEL AND DRILLED CEMENT FROM 1,532' TO 2,060'. RAN DRILL BIT TO 2,160 AND CIRCULATED HOLE CLEAN. PRESSURE TESTED CASING FROM 0' TO 3,701'. PRESSURE DECREASED FROM 495 PSI TO 475 PSI IN 30 MINS.

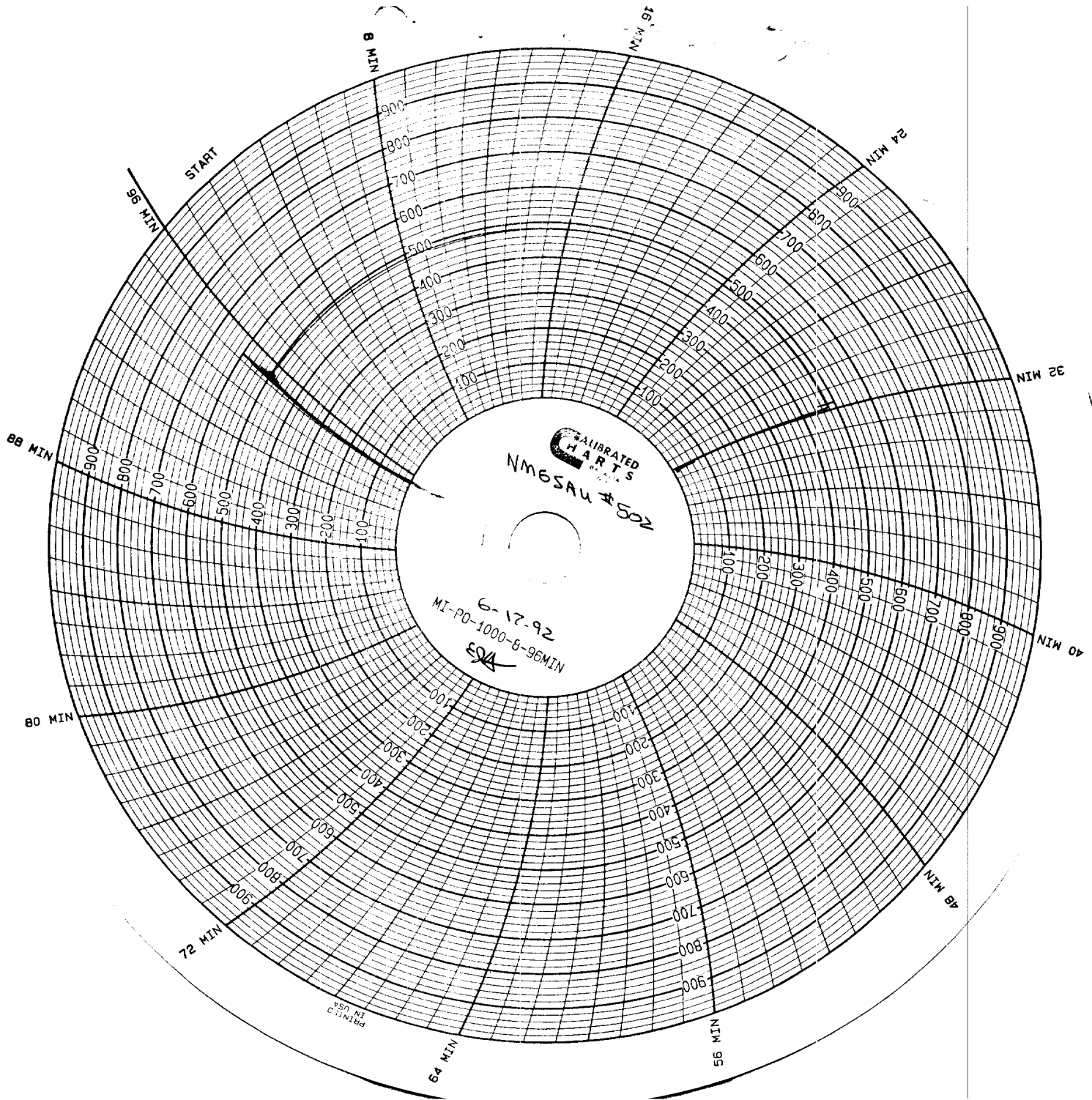
06-19-92 (24 HOUR REPORT): CIRCULATED SAND FROM 3,701' TO 3,751'. TOH WITH 113 JTS. 2-3/8" TBG., TOP SUB, 6 3-1/2" DRILL COLLARS, BIT SUB AND 4-3/4" DRILL BIT. TIH WITH RETRIEVING TOOL ON 119 JTS. 2-3/8" TBG., WASHED OVER RETRIEVING NECK AND RELEASED RBP AT 3,751'. TOH WITH 119 JTS. 2-3/8" TBG., RETRIEVING TOOL AND RBP. TIH WITH 2-3/8" MUD JOINT, 2-3/8" x 4' PERFORATED SUB, 2-3/8" SN, 2-3/8" IPC TBG. JT. AND 121 JTS. 2-3/8" TBG. SET TBG. AT 3,876' AND SN AT 3,840'. REMOVED BOP AND INSTALLED TUBINGHEAD SLIPS AND PACKING. TIH WITH A 2.0" x 1.5" x 16' RWBC PUMP #A-4431, 109 3/4" SUCKER RODS, 43 7/8" SUCKER RODS, 7/8" x 6' AND A 1-1/4" x 20' POLISHED ROD WITH A 1-1/2" x 12' LINER. LOADED TBG. AND CHECKED PUMP ACTION. RIGGED DOWN PULLING UNIT AND CLEANED LOCATION.

TEST (06-24-92) 24 HOUR: 43 BOPD 17 BWPD

RECEIVED

AUG 26 1992

OLD PROCESS CENTER



RECEIVED  
AUG 26 1992  
OCD HOBBBS OFFICE