

DISTRICT I P.O. Box 1980, Hobbs, NM 88240

OIL CONSERVATION DIVISION P.O. Box 2088 Santa Fe, New Mexico 87504-2088

DISTRICT II P.O. Drawer DD, Artesia, NM 88210

DISTRICT III 1000 Rio Brazos Rd., Aztec, NM 87410

WELL API NO. 30--025-05647 ✓

5. Indicate Type of Lease STATE FEE

6. State Oil & Gas Lease No.

7. Lease Name or Unit Agreement Name NORTH MONUMENT G/SA UNIT

8. Well No. BLK. 5

9. Pool name or Wildcat 1 EUNICE MONUMENT G/SA

SUNDRY NOTICES AND REPORTS ON WELLS (DO NOT USE THIS FORM FOR PROPOSALS TO DRILL OR TO DEEPEN OR PLUG BACK TO A DIFFERENT RESERVOIR. USE 'APPLICATION FOR PERMIT' (FORM C-101) FOR SUCH PROPOSALS.)

1. Type of Well: OIL WELL GAS WELL OTHER

2. Name of Operator AMERADA HESS CORPORATION

3. Address of Operator DRAWER D, MONUMENT, NM 88265

4. Well Location Unit Letter A : 660 Feet From The NORTH Line and 660 Feet From The EAST Line

Section 19 Township 19S Range 37E NMPM LEA County

10. Elevation (Show whether DF, RKB, RT, GR, etc.)

11. Check Appropriate Box to Indicate Nature of Notice, Report, or Other Data

NOTICE OF INTENTION TO:

PERFORM REMEDIAL WORK PLUG AND ABANDON

TEMPORARILY ABANDON CHANGE PLANS

PULL OR ALTER CASING

OTHER:

SUBSEQUENT REPORT OF:

REMEDIAL WORK ALTERING CASING

COMMENCE DRILLING OPNS. PLUG AND ABANDONMENT

CASING TEST AND CEMENT JOB

OTHER:

12. Describe Proposed or Completed Operations (Clearly state all pertinent details, and give pertinent dates, including estimated date of starting any proposed work) SEE RULE 1103. 4-20 THRU 5-10-93

MIRU PULLING UNIT & TOH W/RODS & PUMP, REMOVED WELLHEAD & INSTALLED BOP. TOH W/TBG. TIH W/A 4-3/4" BIT & TAGGED UP IN OPENHOLE AT 3,967' & TOH W/BIT. TIH W/A 5-1/2" X 2-3/8" ELDER LOK-SET RBP SET AT 3,760'. CIRC. CASING & TUBING W/160 BBLs. OF FRESH WATER. PRESSURED CASING W/510 PSI. LEAKED OFF 60 PSI IN 4 MINS. RE-PRESS. CSG. W/600 PSI. LEAKED OFF 120 PSI IN 9 MINS. TIH W/A 5-1/2" X 2-3/8" ELDER FULLBORE PACKER SET 1,423' & PRESS. TBG. & BELOW PACKER W/550 PSI. HELD OK. RE-SET PACKER AT 1,361. PRESS. TO 500 PSI. LEAKED OFF 150 PSI IN 30 MIN. PRESS. CASING ANNULUS ABOVE PACKER W/500 PSI. HELD OK. PUMPED DOWN TBG. ATTEMPTED TO ESTABLISH INJECTION RATE INTO LEAK. PUMPED 3 BBLs. PRESS., INCREASED TO 700 PSI. TOH W/TBG. & PACKER. DUMPED 3 SKS. OF SAND ON RBP. TIH W/TUBING SET O.E. AT 1,418'. HALLIBURTON SERVICE SPOTTED 50 SKS. OF MICRO-MATRIX CEMENT FROM 1,418' TO 955'. SET TUBING AT 925' & REVERSED CIRC. CASING & TUBING W/30 BBLs. OF FRESH WATER. (CON'T)

I hereby certify that the information above is true and complete to the best of my knowledge and belief. SIGNATURE R.L. Wheeler, Jr. TITLE SUPV. ADM. SVC. DATE 5-21-93 TYPE OR PRINT NAME R.L. WHEELER, JR. TELEPHONE NO. 393-2144

(This space for State Use) ORIGINAL SIGNED BY JERRY SEXTON DISTRICT I SUPERVISOR APPROVED BY TITLE DATE MAY 27 1993

CONDITIONS OF APPROVAL, IF ANY:

RECEIVED

MAY 26 1993

OCD HOBBS OFFICE

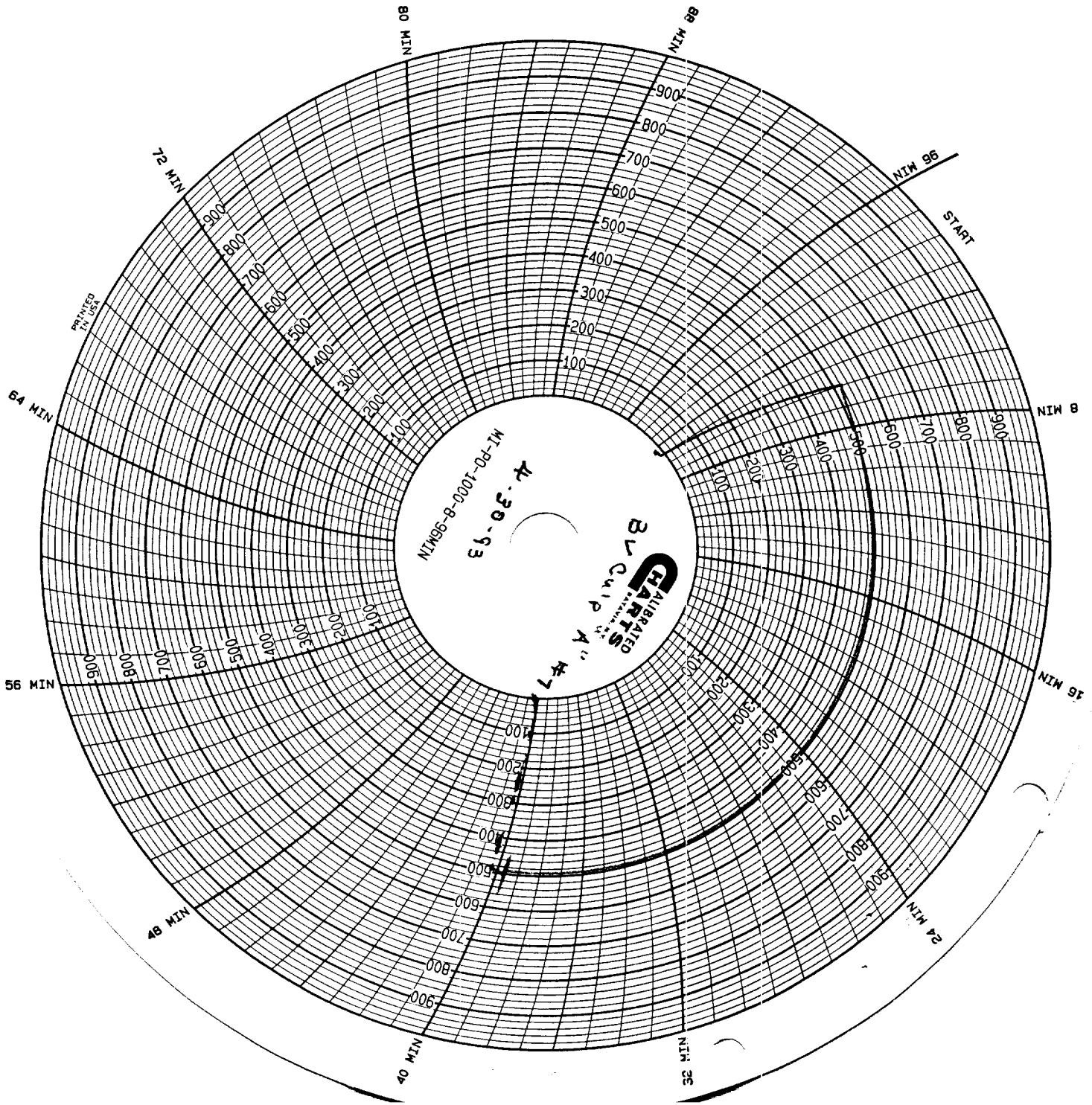
TIH W/A 5-1/2" X 2-3/8" ELDER FULLBORE PACKER SET AT 872'. HALLIBURTON PRESS. TUBING & CEMENT BELOW PACKER. PUMPED 19 SKS. INTO FORMATION BEHIND PIPE & LEFT 31 SKS. IN 5-1/2" CASING BELOW PACKER. RELEASED PACKER & TOH. TIH W/A 4-3/4" BIT & TAGGED TOPOF CEMENT AT 1,217'. DRILLED CEMENT FROM 1,217' TO 1,422'. CIRC. CASING CLEAN & PRESS. W/560 PSI. LEAKED OFF 150 PSI IN 5 MINS. RE-PRESS. TO 550 PSI. LEAKED OFF 120 PSI IN 5 MINS. TOH W/BIT, TIH W/A 5-1/2" X 2-3/8" ELDER FULLBORE PACKER SET AT 1,392' & PRESS. TUBING BELOW PACKER W/560 PSI. HELD OK. RE-SET PACKER AT 1,361' & PRESS. BELOW PACKER W/560 PSI. LEAKED OFF 150 PSI IN 5 MINS. PRESS. CSG. ANNULUS ABOVE PKR. W/600 PSI. HELD OK. PRESS. TUBING & BELOW PACKER TO 950 PSI TO ESTABLISH INJECTION RATE INTO LEAK. COULD NOT ESTABLISH INJECTION RATE. PRESS. INCREASED FROM 0 PSI TO 950 PSI, AFTER PUMPING 2 BBLs. INTO LEAK. TIH W/TUBING & SET O.E. AT 1,418'. HALLIBURTON SERVICE SPOTTED 50 SKS. OF MICO-MATRIX IN 5-1/2" CASING FROM 955' TO 1,418'. TOH W/ 16 JTS. OF TUBING. SET TUBING AT 925' & REVERSED TUBING & CASING CLEAN & TOH W/REMAINING TUBING. TIH W/A 5-1/2" X 2-3/8" ELDER FULLBORE PACKER. SET AT 810'. HALLIBURTON PRESS. TUBING & DISPLACED CEMENT INTO LEAK. DISPLACED 12 SKS. INTO LEAK & BEHIND PIPE, 33.4 SKS. IN CASING BELOW PKR. & CIRC. 4.6 SKS. TO PIT. TOH W/TUBING & PACKER. TIH W/A NEW 4-3/4" BIT & TAGGED TOP OF CEMENT AT 1,281'. DRILLED CEMENT FROM 1,281' TO 1,321'. DRILLED CEMENT FROM 1,321' TO 1,427'. CIRC. HOLE CLEAN & PRESS. CASING & TUBING W/510 PSI. LEAKED OFF 10 PSI IN 30 MINS. TOH W/BIT. TIH W/RETRIEVING TOOL. WASHED SAND OFF RBP AT 3,760'. RELEASED RBP & TOH W/RBP. RIP UP ALAMO TUBING TESTERS & TIH W/3-1/2" DUMP BAILER (20 GAL.) LOADED W/WATER AS DUMMY RUN. FOUND FLUID LEVEL AT 2,400' & TD AT 3,967'. MARKED SAND LINE. TIH W/DUMP BAILER LOADED W/20 GAL. (250 PSI) HYDROMITE. PUMPED FRESH WATER DOWN CASING AT 1/4 BPM. TOH. WAITED ONE HOUR. TIH W/DUMP BAILER LOADED W/20 GALS. (250 PSI) HYDROMITE. FOUND TD AT 3,962' (5' OF FILL). DUMPED SECOND LOAD & TOH. WAITED ONE HOUR. PUMPED FRESH WATER AT 1/4 BPM THROUGHOUT JOB. PUMPED TOTAL OF 75 BBLs. CASING LOADED AFTER SECOND DUMP. TIH W/SLICKLINE & TAGGED UP AT 3,909'. TIH W/DUMP BAILER LOADED W/WATER & TAGGED UP AT 3,909'. FILL 18' HIGHER THAN ANTICIPATED. RIG DOWN ALAMO. TIH W/4-3/4" BIT & TAGGED TOP OF HYDROMITE IN OPEN HOLE AT 3,913'. SWABBED WELL. TIH W/5-1/2" MODEL "R" PACKER SET AT 3,756'. SERFCO ACIDIZED WELL W/1,000 GALS. 15% NEFE DI HCL ACID W/75 LB. SODIUM ERYTHORBATE FOR IRON CONTROL, PLUS 3% CHAMPION DP77MX. SWABBED WELL. RELEASED PACKER & TOH. TIH W/A 2" X 16' PUMP BARREL W/SV IN PLACE ON 2-3/8" TUBING. REMOVED BOP, INSTALLED WELLHEAD & SET TUBING O.E. AT 3,856', SN AT 3,855', TOP OF PUMP BARREL AT 3,839' & 5-1/2" X 2-3/8" ELDER TUBING ANCHOR AT 3,683' W/16,000 PSI OF TENSION. TIH W/A 1.75" X 4' SPRAY METAL PLUNGER ON RODS, SPACED OUT PLUNGER, & CLAMPED OFF RODS. RDPU, CLEANED LOCATION & RESUMED PROD. WELL.

TEST OF 5-16-93 = PROD. 4 B.O., 302 B.W. & 18 MCFGPD IN 24 HRS.

RECEIVED

MAY 26 1993

OCD HOBBS OFFICE



BARTS CALIBRATED
B.V. EQUIP. A 11 #7
4-30-93
MT-PD-1000-B-98MTN

PRINTED
IN USA

RECEIVED
MAY 26 1983
DCD HARRIS CENTER