

OIL CONSERVATION DIVISION

DISTRICT I 1625 N. French Dr., Hobbs, NM 88240
DISTRICT II 811 S. First, Artesia, NM 88210
DISTRICT III 1000 Rio Brazos Rd., Aztec, NM 87410

1220 South St. Francis Dr. Santa Fe, NM 87504

WELL API NO. 30-025-12478
5. Indicate Type of Lease STATE [checked] FEE []
6. State Oil / Gas Lease No. B-1543-1
7. Lease Name or Unit Agreement Name North Monument G/SA Unit BIK. 14
8. Well No. 32
9. Pool Name or Wildcat

SUNDRY NOTICES AND REPORTS ON WELLS (DO NOT USE THIS FORM FOR PROPOSALS TO DRILL OR TO DEEPEN OR PLUG BACK TO A DIFFERENT RESERVOIR. USE 'APPLICATION FOR PERMIT' (FORM C-101) FOR SUCH PROPOSALS.)
1. Type of Well OIL WELL [checked] GAS WELL [] OTHER []
2. Name of Operator Amerada Hess Corporation
3. Address of Operator P.O. Box 840, Seminole, TX 79360
4. Well Location Unit Letter P 660 Feet From The South Line and 660 Feet From The East Line
Section 36 Township 19S Range 36E NMPM Lea COUNTY
10. Elevation (Show whether DF, RKB, RT,GR, etc.)

11. Check Appropriate Box to Indicate Nature of Notice, Report, or Other Data
NOTICE OF INTENTION TO:
PERFORM REMEDIAL WORK [] PLUG AND ABANDON []
TEMPORARILY ABANDON [] CHANGE PLANS []
PULL OR ALTER CASING []
OTHER: []
SUBSEQUENT REPORT OF:
REMEDIAL WORK [] ALTERING CASING []
COMMENCE DRILLING OPERATIONS [] PLUG AND ABANDONMENT []
CASING TEST AND CEMENT JOB []
OTHER: TA'd Well. [checked]

12. Describe Proposed or Completed Operations (Clearly state all pertinent details, and give pertinent dates, including estimated date of starting any proposed work) SEE RULE 1103.
4-23 thru 4-30-2001
MIRU Aries Well Svc. pulling unit & TOH w/rods & pump. Removed wellhead, installed BOP & TOH w/tbg. Jarrel Svc. TIH w/gauge ring to 3700'. TIH w/7" CIBP set at 3650' & capped w/14' cement. TOC at 3636'. Circ. pkr. fluid & attempted to press. test csg. w/no success. TIH w/pkr. press. testing at intervals & located csg. leak fr. 3488' - 3519'. Halliburton Svc. squeezed csg. leak w/50 sks. Premium Plus cement. WOC. TIH & tagged TOC at 3324'. Circ. pkr. fluid & press. tested csg. to 580 PSI for 30 min. Held OK. Chart attached. TOH w/tbg. Removed BOP & installed wellhead. RDPU, cleaned location, & TA'd well.

Amerada Hess Corporation respectfully request a TA'd status on well for future NMGSAU operations.

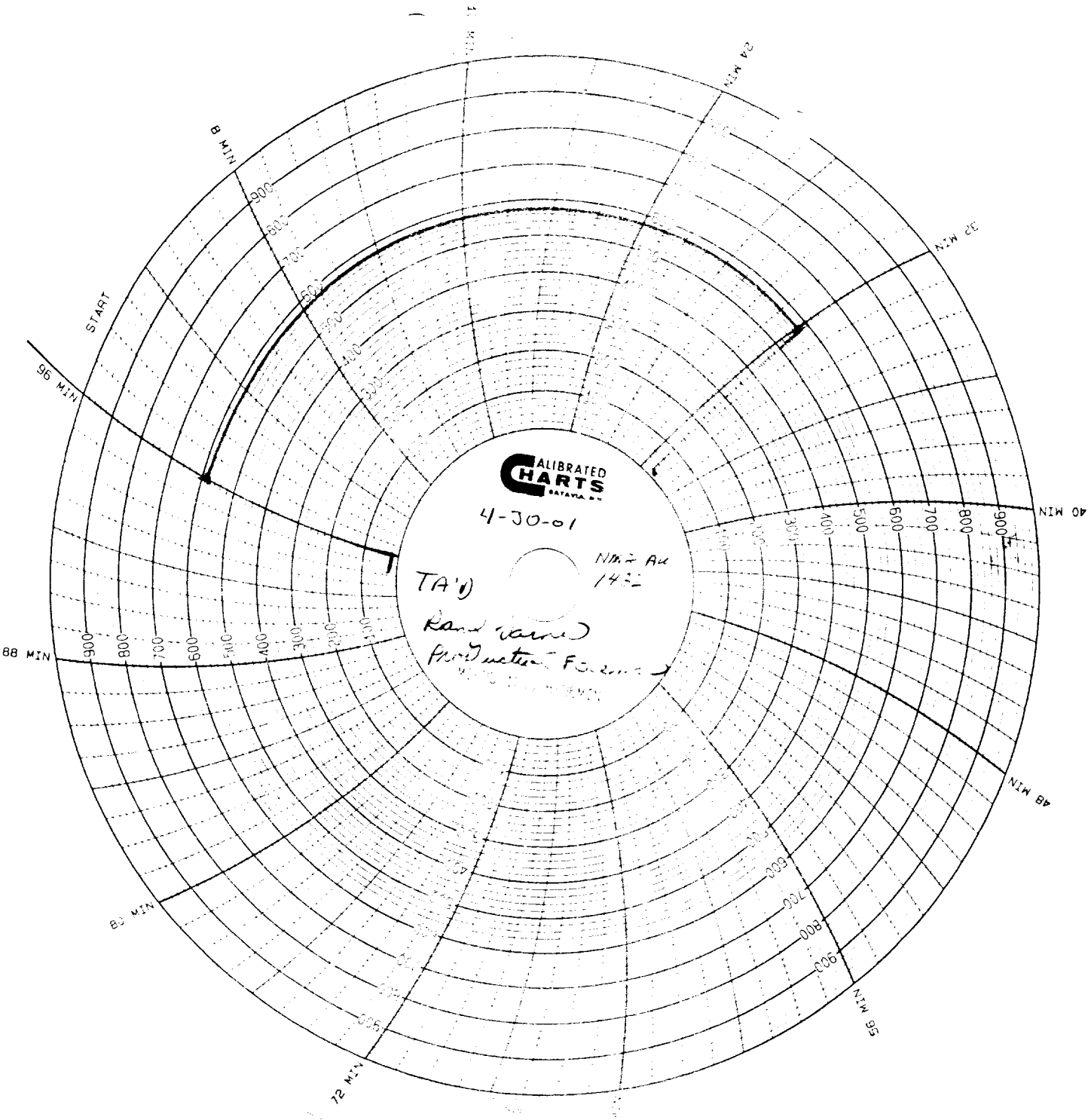
This Approval of Temporary Abandonment Expires 5/8/06

I hereby certify that the information above is true and complete to the best of my knowledge and belief.
SIGNATURE [Signature] TITLE Bus. Svc. Spec. II DATE 05/03/2001
TYPE OR PRINT NAME Roy L. Wheeler, Jr. TELEPHONE NO. 915-758-6778

(This space for State Use)
APPROVED BY TITLE DATE
CONDITIONS OF APPROVAL, IF ANY:

JCNG

RECEIVED
Hobbs
CCO



**CALIBRATED
CHARTS**
SATAYA, INC.

4-30-01

TA-1

NH-2 AK
14-2

Ramp ramp

Production Form

100 200 300 400 500 600 700 800 900

START

12 MIN

24 MIN

36 MIN

48 MIN

60 MIN

72 MIN

84 MIN

96 MIN

100

200

300

400

500

600

700

800

900

100

200

300

400

500

600

700

800

900

100

200

300

400

500

600

700

800

900

100

200

300

400

500

600

700

800

900

100

200

300

400

500

600

700

800

900

100

200

300

400

500

600

700

800

900

100

200

300

400

500

600

700

800

900

100

200

300

400

500

600

700

800

900

100

200

300

400

500

600

700

800

900

100

200

300

400

500

600

700

800

900

100

200

300

400

500

600

700

800

900

100

200

300

400

500

600

700

800

900

100

200

300

400

500

600

700

800

900

100

200

300

400

500

600

700

800

900

100

200

300

400

500

600

700

800

900

100

200

300

400

500

600

700

800

900

100

200

300

400

500

600

700

800

900

100

200

300

400

500

600

700

800

900

100

200

300

400

500

600

700

800

900

100

200

300

400

500

600

700

800

900

100

200

300

400

500

600

700

800

900

100

200

300

400

500

600

700

800

900

100

200

300

400

500

600

700

800

900

100

200

300

400

500

600

700

800

900

100

200

300

400

500

600

700

800

900

100

200

300

400

500

600

700

800

900

100

200

300

400

500

600

700

800

900

100

200

300

400

500

600

700

800

900

100

200

300

400

500

600

700

800

900

100

200

300

400

500

600

700

800

900

100

200

300

400

500

600

700

800

900

100

200

300

400

500

600

700

800

900

100

200

300

400

500

600

700

800

900

100

200

300

400

500

600

700

800

900

100

200

300

400

500

600

700

800

900

100

200

300

400

500