

Submit to Appropriate
District Office
State Lease - 4 copies
Fee Lease - 1 copy

State of New Mexico
Energy, Minerals and Natural Resources Department

Form C-102
Revised 1-1-89

OIL CONSERVATION DIVISION

P.O. Box 2088

Santa Fe, New Mexico 87504-2088

DISTRICT I

P.O. Box 1980, Hobbs, NM 88240

DISTRICT II

P.O. Drawer DD, Artesia, NM 88210

DISTRICT III

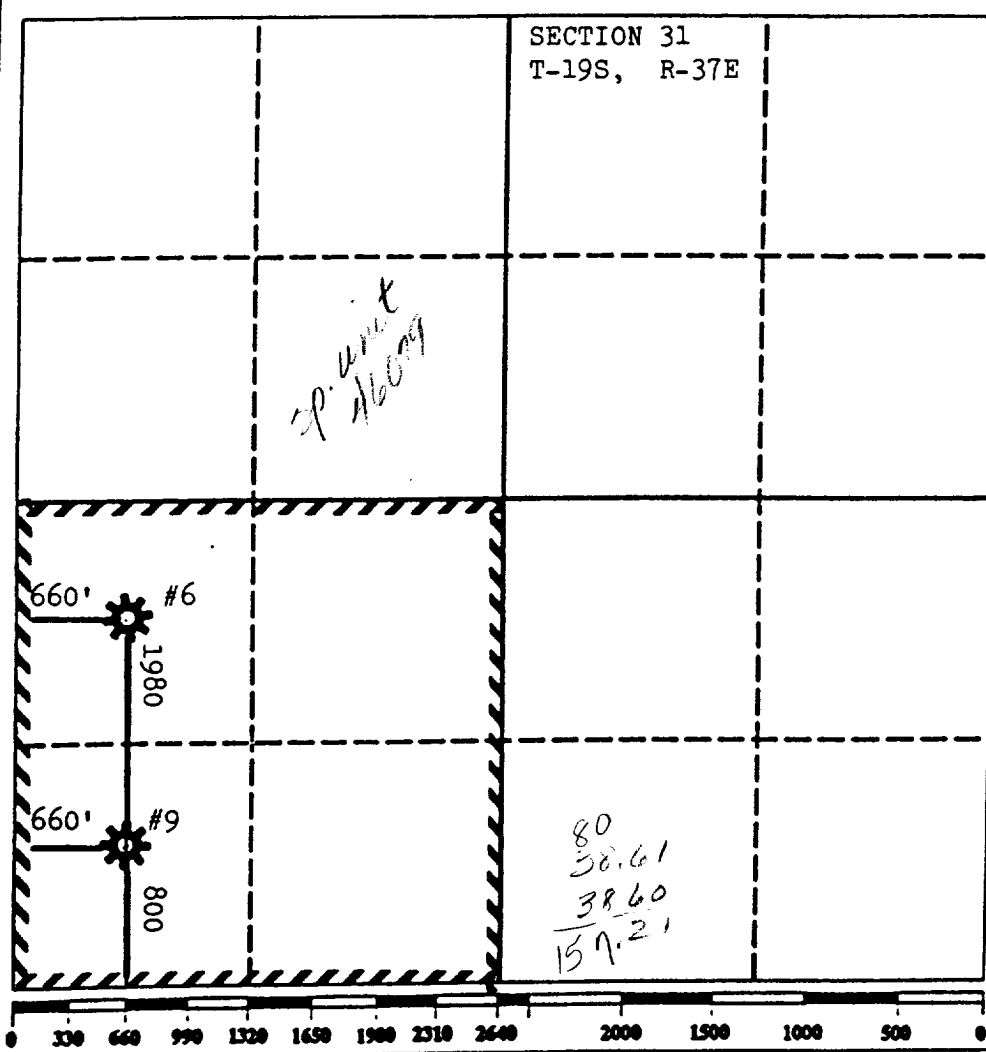
1000 Rio Brazos Rd., Aztec, NM 87410

WELL LOCATION AND ACREAGE DEDICATION PLAT

All Distances must be from the outer boundaries of the section

Operator ARCO OIL AND GAS COMPANY			Lease J. R. PHILLIPS "A"		Well No. #9
Unit Letter M	Section 31	Township T-19-S	Range R-37-E	County LEA COUNTY	
Actual Footage Location of Well: 800 feet from the SOUTH line and 660 feet from the WEST line					
Ground level Elev. 3586'	Producing Formation YATES/7-RIVERS/QUEEN		Pool EUMONT GAS		Dedicated Acreage: 160 Acres

- Outline the acreage dedicated to the subject well by colored pencil or hectare marks on the plat below.
- If more than one lease is dedicated to the well, outline each and identify the ownership thereof (both as to working interest and royalty).
- If more than one lease of different ownership is dedicated to the well, have the interest of all owners been consolidated by communitization, unitization, force-pooling, etc?
☐ Yes ☐ No If answer is "yes" type of consolidation _____
If answer is "no" list the owners and tract descriptions which have actually been consolidated. (Use reverse side of this form if necessary).
No allowable will be assigned to the well until all interests have been consolidated (by communitization, unitization, forced-pooling, or otherwise) or until a non-standard unit, eliminating such interest, has been approved by the Division.



OPERATOR CERTIFICATION

I hereby certify that the information contained herein is true and complete to the best of my knowledge and belief.

EVELYN GILSON *E. Gilson*
Signature

EVELYN E. GILSON

Printed Name

ENGINEERING TECHNICIAN

Position

ARCO OIL AND GAS COMPANY

Company

SEPTEMBER 24, 1992

Date

SURVEYOR CERTIFICATION

I hereby certify that the well location shown on this plat was plotted from field notes of actual surveys made by me or under my supervision, and that the same is true and correct to the best of my knowledge and belief.

Date Surveyed

Signature & Seal of
Professional Surveyor

Certificate No.

District I
PO Box 1988, Hobbs, NM 88241-1988
District II
PO Drawer DD, Artesia, NM 88211-0719
District III
1000 Rio Brazos Rd., Aztec, NM 87410
District IV
PO Box 2088, Santa Fe, NM 87504-2088

State of New Mexico
Energy, Minerals & Natural Resources Department

OIL CONSERVATION DIVISION
PO Box 2088
Santa Fe, NM 87504-2088

Form C-102
Revised February 10, 1994
Instructions on back
Submit to Appropriate District Office
State Lease - 4 Copies
Fee Lease - 3 Copies

☐ AMENDED REPORT

WELL LOCATION AND ACREAGE DEDICATION PLAT

API Number 30-025-23632		Pool Code 22800	Pool Name Eumont Yates SRO Oil
Property Code 001512	Property Name J.R. Phillips A		Well Number 9
OGRID No. 000990	Operator Name ARCO Oil and Gas Company		Elevation 3586'

10 Surface Location

UL or lot no.	Section	Township	Range	Lot Ida	Feet from the	North/South line	Feet from the	East/West line	County
M	31	19S	37E		880	S	660	W	Lea

11 Bottom Hole Location If Different From Surface

UL or lot no.	Section	Township	Range	Lot Ida	Feet from the	North/South line	Feet from the	East/West line	County

12 Ductile	13 Acres	14 Joint or Infill	15 Consolidation Code	16 Order No.

NO ALLOWABLE WILL BE ASSIGNED TO THIS COMPLETION UNTIL ALL INTERESTS HAVE BEEN CONSOLIDATED
OR A NON-STANDARD UNIT HAS BEEN APPROVED BY THE DIVISION

16	Section 31, T19S, R37E	17 OPERATOR CERTIFICATION I hereby certify that the information contained herein is true and complete to the best of my knowledge and belief. <i>Kellie D. Murrish</i> Signature Kellie D. Murrish Printed Name Records Clerk II Title 05/10/94 Date
		18 SURVEYOR CERTIFICATION I hereby certify that the well location shown on this plat was plotted from field notes of actual surveys made by me or under my supervision, and that the same is true and correct to the best of my belief. Date of Survey Signature and Seal of Professional Surveyer: Certificate Number

New Mexico Oil Conservation Division
C-102 Instructions

IF THIS IS AN AMENDED REPORT, CHECK THE BOX LABELED "AMENDED REPORT" AT THE TOP OF THIS DOCUMENT.

Surveyors shall use the latest United States government survey or dependent resurvey. Well locations will be in reference to the New Mexico Principal Meridian. If the land is not surveyed contact the appropriate OCD district office. Independent subdivision surveys will not be acceptable.

1. The OCD assigned API number for this well
2. The pool code for this (proposed) completion
3. The pool name for this (proposed) completion
4. The property code for this (proposed) completion
5. The property name (well name) for this (proposed) completion
6. The well number for this (proposed) completion
7. The operator's OGRID number
8. The operator's name
9. The ground level elevation of this well
10. The surveyed surface location of this well measured from the section lines. NOTE: If the United States government survey designates a Lot Number for this location use that number in the 'UL or lot no.' box. Otherwise use the OCD unit letter.
11. Proposed bottom hole location. If this is a horizontal hole indicate the location of the end of the hole.
12. The calculated acreage dedicated to this completion to the nearest hundredth of an acre
13. Put a Y if more than one completion will be sharing this same acreage or N if this is the only completion on this acreage
14. If more than one lease of different ownership has been dedicated to the well show the consolidation code from the following table:

C	Communitization
U	Unitization
F	Forced pooling
O	Other
P	Consolidation pending

NO ALLOWABLE WILL BE ASSIGNED TO THIS COMPLETION UNTIL ALL INTERESTS HAVE BEEN CONSOLIDATED OR A NON-STANDARD UNIT HAS BEEN APPROVED BY THE DIVISION!

15. Write in the OCD order(s) approving a non-standard location, non-standard spacing, or directional or horizontal drilling

16. This grid represents a standard section. You may superimpose a non-standard section over this grid. Outline the dedicated acreage and the separate leases within that dedicated acreage. Show the well surface location and bottom hole location, if it is directionally drilled, with the dimensions from the section lines in the cardinal directions. (Note: A legal location is determined from the perpendicular distance to the edge of the tract.) If this is a high angle or horizontal hole show that portion of the well bore that is open within this pool.

Show all lots, lot numbers, and their respective acreage.

If more than one lease has been dedicated to this completion, outline each one and identify the ownership as to both working interest and royalty.

17. The signature, printed name, and title of the person authorized to make this report, and the date this document was signed.
18. The registered surveyors certification. This section does not have to be completed if this form has been previously accepted by the OCD and is being filed for a change of pool or dedicated acreage.

NEED
JUL 11 1966
OFFICE

OK

COUNTY LEA FIELD Monument STATE NM 30-025-23632

OPR ATLANTIC RICHFIELD CO. MAP

9 Phillips, J. R. "A"

Sec 31, T-19-S, R-37-E CO-ORD

800' FSL, 660' FWL of Sec

Spd 1-11-71 CLASS EL 3586' ~~2~~

Cmp 3-3-71

	FORMATION	DATUM	FORMATION	DATUM
CSG & SX - TUBING				
13 3/8" at 560' w/500 sx				
9 5/8" at 3645' w/1500 sx				
5 1/2" at 9650' w/1335 sx.				
LOGS EL GR RA IND HC A				
	TD 9650'; PBD 9610'			

IP (McKee) Perfs 9488-9508' CAOF 4696 MCFGPD. GOR Dry; Grav (gas) .654; SIWHP 1527#.

Distribution limited and publication prohibited by subscribers' agreement.
Reproduction rights reserved by Williams & Lee Scouting Service, Inc.

CONF Moran PROP DEPTH 9900' TYPE RT

DATE

F.R. 11-17-70; Opr's Elev. 3586' DF
PD 9900' RT (McKee)
Contractor - Moran

1-12-71 TD 566'; Rng 13 3/8" Casing

1-19-71 Drlg. 3043'

1-26-71 Drlg. 4505'

2-1-71 Drlg. 5800'

2-9-71 Drlg. 7650'

2-15-71 Drlg. 8809'

2-22-71 Drlg. 9570'

3-2-71 TD 9650'; PBD 9610'; Prep Perf
DST (McKee) 9497-9608', open 1 hr, GTS 10 mins
@ 700 MCFGPD, SFP 1500#, rec 270' oil (grav 49),
(Sample Chamber rec 9 cu ft gas + 17 cc's oil),
1 hr ISIP 2019#, FP 1471-1995#, 1 hr FSIP 2019#,
HP 4503-4503', BH Temp 130 deg.

3-8-71 TD 9650'; PBD 9610'; WO OCC Potential
Perf (McKee) 9488-9508' w/2 SPF
Natural
CAOF 4700 MCFGPD
3-15-71 TD 9650'; PBD 9610'; WO Potential
3-22-71 TD 9650'; PBD 9610'; COMPLETE
(McKee) FOUR POINT GAUGES:
Flwd 545 MCFGPD, 1/8" chk, 1 hr, TP 1459#
Flwd 1483 MCFGPD, 7/32" chk, 1 hr, TP 1276#
Flwd 1854 MCFGPD, 1/4" chk, 1 hr, TP 1230#
Flwd 2375 MCFGPD, 5/16" chk, 1 hr, TP 1040#
LOG TOPS: Yates 2374', Queen 3212', Grayburg
3375', San Andres 3772', Glorieta 5149',
Paddock 5385', Blinbry 5695', Tubb 6232',

3-22-71 Continued
Drinkard 6325', Abo 6823', Wolfcamp 7085',
Pennsylvanian 7940', Devonian 8230', Montoya
8893', Simpson 9186', McKee 9432'
3-25-71 COMPLETION REPORTED

**NEW MEXICO OIL CONSERVATION COMMISSION
WELL LOCATION AND ACREAGE DEDICATION PLAT**

Form C-102
Supersedes C-128
Effective 1-1-65

All distances must be from the outer boundaries of the Section.

Operator Atlantic Richfield Company			Lease J. R. Phillips "A"		Well No. 9
Unit Letter M	Section 31	Township 19-S	Range 37-E	County Lea	
Actual Footage Location of Well: <div style="display: flex; justify-content: space-between;"> 800 feet from the South line and 660 feet from the West line </div>					
Ground Level Elev.	Producing Formation McKee	Pool Monument	Dedicated Acreage: 157 Acres		

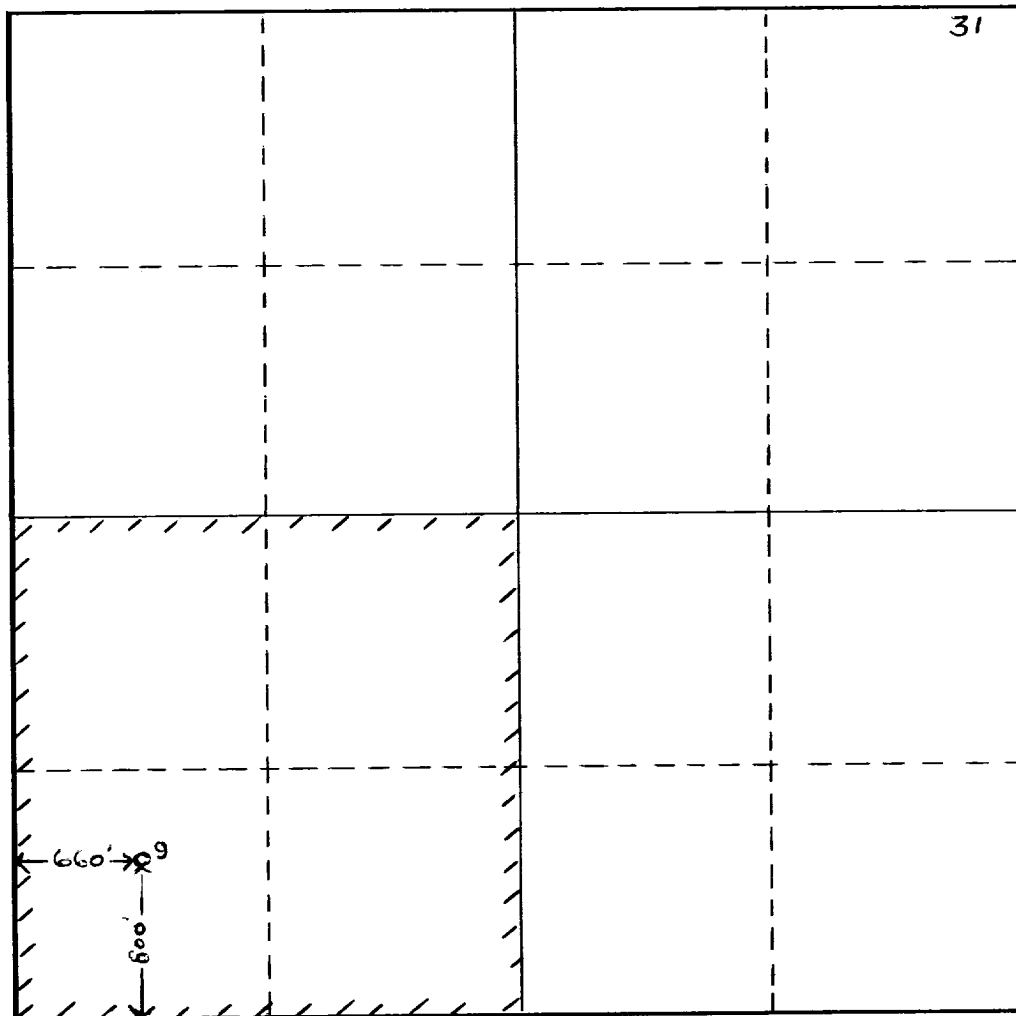
1. Outline the acreage dedicated to the subject well by colored pencil or hachure marks on the plat below.
2. If more than one lease is dedicated to the well, outline each and identify the ownership thereof (both as to working interest and royalty).
3. If more than one lease of different ownership is dedicated to the well, have the interests of all owners been consolidated by communitization, unitization, force-pooling, etc?

☐ Yes ☐ No If answer is "yes," type of consolidation _____

If answer is "no," list the owners and tract descriptions which have actually been consolidated. (Use reverse side of this form if necessary.) _____

No allowable will be assigned to the well until all interests have been consolidated (by communitization, unitization, forced-pooling, or otherwise) or until a non-standard unit, eliminating such interests, has been approved by the Commission.

R-37-E



CERTIFICATION

I hereby certify that the information contained herein is true and complete to the best of my knowledge and belief.

O. D. Bretches

Name

O. D. Bretches

Position

Dist. Drlg. Supervisor

Company

Atlantic Richfield Co.

Date

November 11, 1970

I hereby certify that the well location shown on this plat was plotted from field notes of actual surveys made by me or under my supervision, and that the same is true and correct to the best of my knowledge and belief.

Date Surveyed

NOV-11-1970

Registered Professional Engineer
and/or Land Surveyor

[Signature]

Certificate No.

648

T
19
S

FILE

RECEIVED

NOV 12 1970

OIL CONSERVATION COMM.
HOBBES, N. C.