

NEW MEXICO OIL CONSERVATION COMMISSION
WELL LOCATION AND ACREAGE DEDICATION PLAT

Form
Supersedes 1-1-78
11-1-78

All distances must be from the outer boundaries of the Section

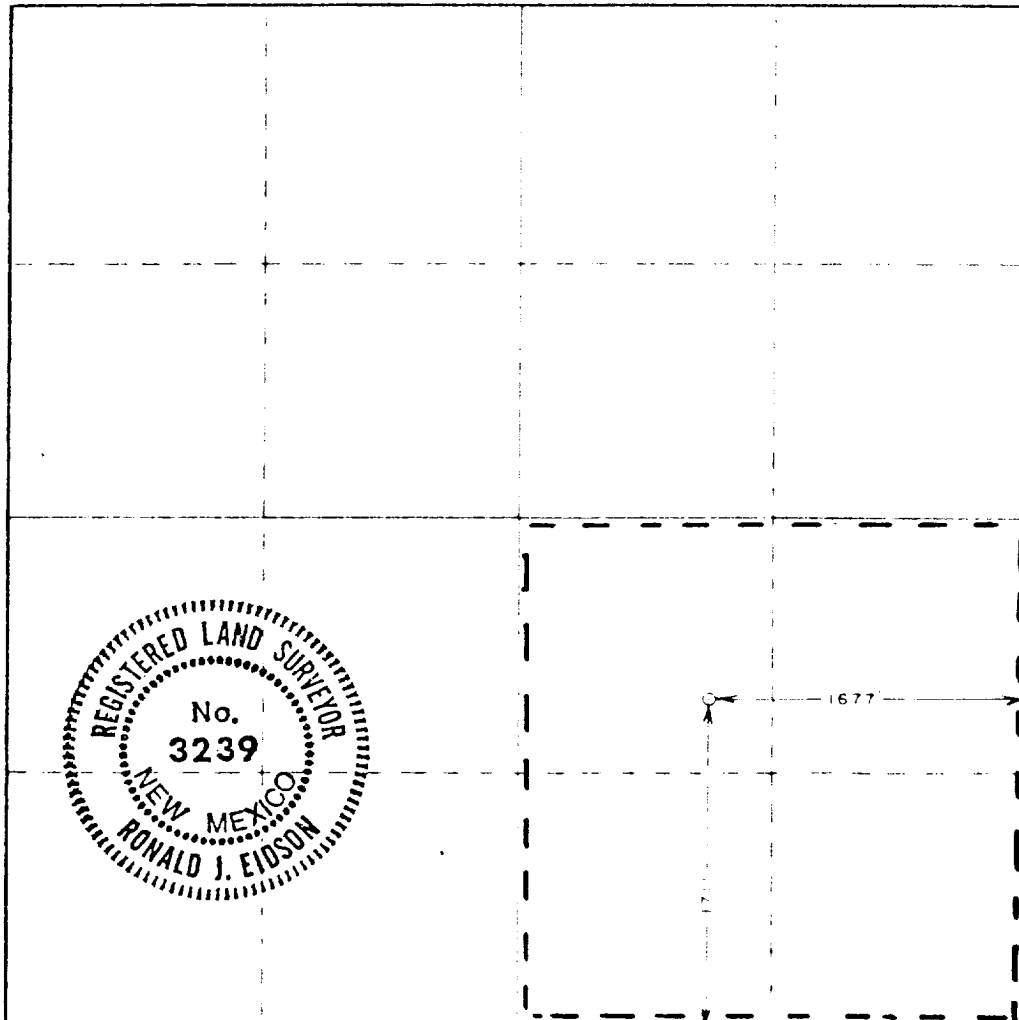
Lessee CONTINENTAL OIL Co.		State STATE KN 12		Area 3	
Section J	Section 12	Range 19 SOUTH	Range 36 EAST	County LEA	
Distance from the location of well 1711		Distance from the 1677		Distance from the EAST	
Estimated depth 3725.4	Formalizing Formation Queen	Point Eumant Queen Gas	Estimated acreage 160		

1. Outline the acreage dedicated to the subject well by colored pencil or hatchure marks on the plat below.
2. If more than one lease is dedicated to the well, outline each and identify the ownership thereof (both as to working interest and royalty)
3. If more than one lease of different ownership is dedicated to the well, have the interests of all owners been consolidated by communitization, unitization, force-pooling, etc?

☐ Yes ☐ No If answer is "yes," type of consolidation _____

If answer is "no," list the owners and tract descriptions which have actually been consolidated (Use reverse side of this form if necessary.) _____

No allowable will be assigned to the well until all interests have been consolidated (by communitization, unitization, forced-pooling, or otherwise) or until a non-standard unit, eliminating such interests, has been approved by the Commission.



CERTIFICATION

I hereby certify that the information contained herein is true and complete to the best of my knowledge and belief.

Wm. A. Butterfield
Admin. Supv.
CONTINENTAL OIL Co.
JUNE 30, 1978

I hereby certify that the well location shown on this plat was plotted from field notes of actual surveys made by me or under my supervision, and that the same is true and correct to the best of my knowledge and belief.

JUNE 20, 1978

Registered Professional Engineer
and Land Surveyor

Ronald J. Eidson
Certificate No. **John W. West 676**
Ronald J. Eidson 3239