

District I
PO Box 1960, Hobbs, NM 88241-1960
District II
PO Drawer DD, Artesia, NM 88211-0719
District III
1000 Rio Brazos Rd., Aztec, NM 87410
District IV
PO Box 2088, Santa Fe, NM 87504-2088

State of New Mexico
Energy, Minerals & Natural Resources Department

OIL CONSERVATION DIVISION
PO Box 2088
Santa Fe, NM 87504-2088

Form C-101
Revised February 10, 1994
Instructions on back
Submit to Appropriate District Office
State Lease - 6 Copies
Fee Lease - 5 Copies

☐ AMENDED REPORT

APPLICATION FOR PERMIT TO DRILL, RE-ENTER, DEEPEN, PLUGBACK, OR ADD A ZONE

Operator Name and Address: ARMSTRONG ENERGY CORPORATION P.O. Box 1973 Roswell, New Mexico 88202-1973		OCBLD Number 001092
		A/R Number 30-0 25-32914
Property Code 001578	Property Name Mobil Lea State	Well No. 7

7 Surface Location

UL or lot no.	Section	Township	Range	Lot Ids	Feet from the	North/South line	Feet from the	East/West line	County
E	2	20S	34E		1930	North	330	West	Lea

8 Proposed Bottom Hole Location If Different From Surface

UL or lot no.	Section	Township	Range	Lot Ids	Feet from the	North/South line	Feet from the	East/West line	County
Proposed Pool 1 Lea Delaware, Northeast					Proposed Pool 2				

Work Type Code New	Well Type Code 0	Cable/Rotary Rotary	Lease Type Code S	Ground Level Elevation 3677'
Multiple No	Proposed Depth 8400'	Formation Delaware	Contractor LaRue & Muncy	Spud Date Est. 04-13-95

21 Proposed Casing and Cement Program

Hole Size	Casing Size	Casing weight/feet	Setting Depth	Sacks of Cement	Estimated TOC
14 3/4"	9 5/8"	36#	1730' to top ANHY	1200	Circ.
7 7/8"	5 1/2"	15.5#, 17#	8400'	1500	Tie into Surf.
				DV tool @ 6500'	Casing

Describe the proposed program. If this application is to DEEPEN or PLUG BACK give the data on the present productive zone and proposed new productive zone. Describe the blowout prevention program, if any. Use additional sheets if necessary.

Propose to drill the Mobil Lea State #7 well to test the Delaware formation.
Blowout prevention program information is attached.

Permit Expires 6 Months From Approval
Date Unless Drilling Underway.

I hereby certify that the information given above is true and complete to the best of my knowledge and belief. Signature: <i>Thomas K. Scroggin</i>		OIL CONSERVATION DIVISION	
Printed name: Thomas K. Scroggin		Approved by: ORIGINAL SIGNED BY	
Title: Operations Supervisor		Title: GARY WINK FIELD REP. II	
Date: 04-01-95		Approval Date: APR 05 1995	Expiration Date:
Phone: 623-8726		Conditions of Approval: Attached <input type="checkbox"/>	

DISTRICT I
P.O. Box 1980, Hobbs, NM 88240

State of New Mexico

Energy, Minerals and Natural Resources Department

Form C-102
Revised February 10, 1994
Instruction on back
Submit to Appropriate District Office
State Lease - 4 Copies
Fee Lease - 3 Copies

DISTRICT II
P.O. Drawer DD, Artesia, NM 88210

OIL CONSERVATION DIVISION

DISTRICT III
1000 Rio Brazos Rd., Aztec, NM 87410

P.O. Box 2088
Santa Fe, New Mexico 87504-2088

☐ AMENDED REPORT

WELL LOCATION AND ACREAGE DEDICATION PLAT

API Number 30-025-32914	Pool Code 37584	Pool Name Lea Delaware, Northeast
Property Code 001578	Property Name MOBIL LEA STATE	Well Number 7
OGRID No. 001092	Operator Name ARMSTRONG ENERGY CORP.	Elevation 3677

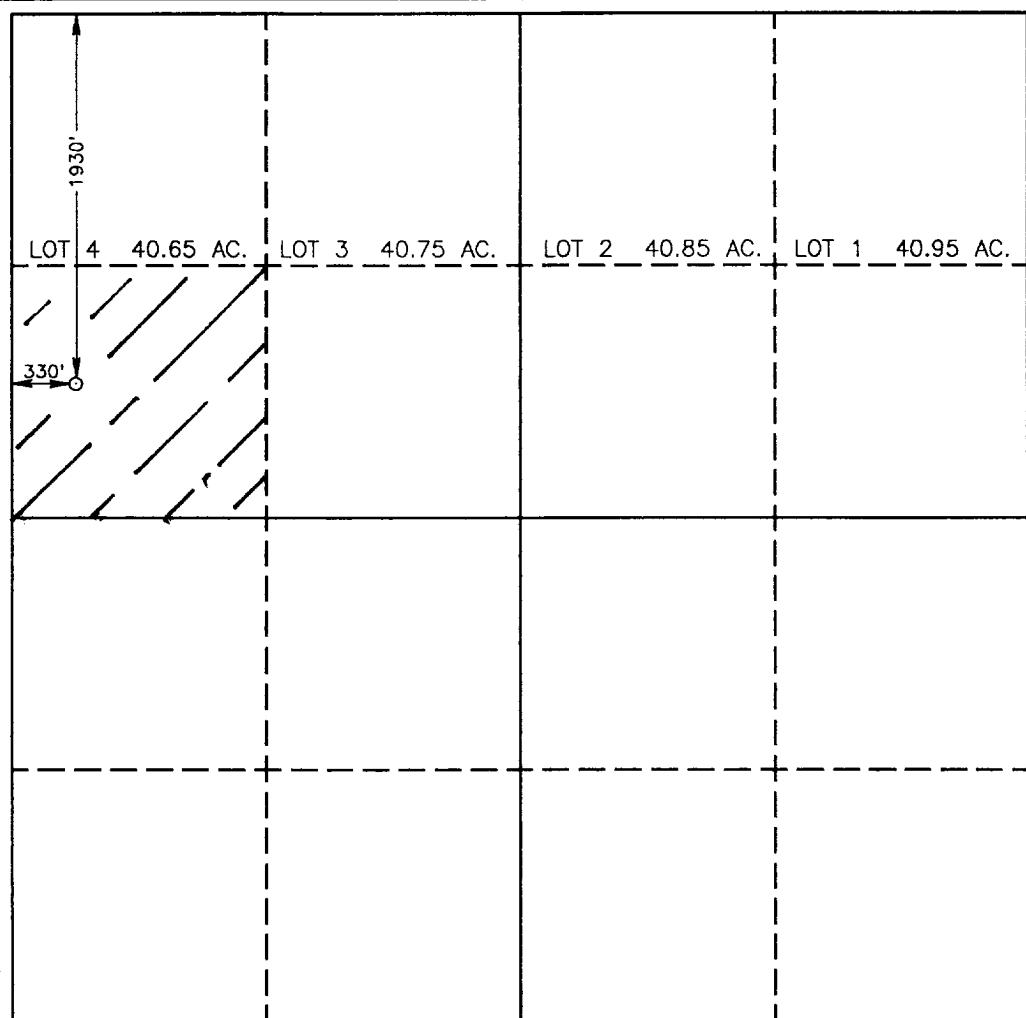


Surface Location

UL or lot No.	Section	Township	Range	Lot Idn	Feet from the	North/South line	Feet from the	East/West line	County
E	2	20 S	34 E		1930	NORTH	330	WEST	LEA

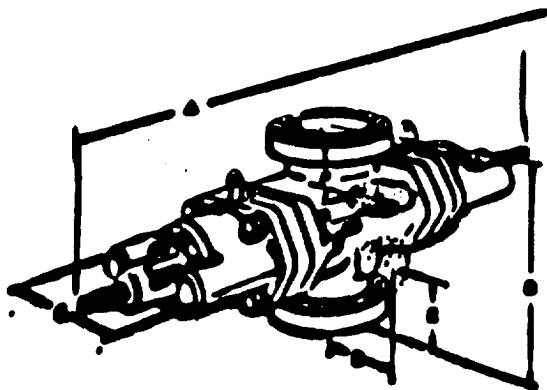
Bottom Hole Location If Different From Surface

UL or lot No.	Section	Township	Range	Lot Idn	Feet from the	North/South line	Feet from the	East/West line	County
Dedicated Acres	Joint or Infill	Consolidation Code	Order No.						

NO ALLOWABLE WILL BE ASSIGNED TO THIS COMPLETION UNTIL ALL INTERESTS HAVE BEEN CONSOLIDATED
OR A NON-STANDARD UNIT HAS BEEN APPROVED BY THE DIVISION

	OPERATOR CERTIFICATION I hereby certify the the information contained herein is true and complete to the best of my knowledge and belief.  Signature Thomas K. Scroggin Printed Name Operations Supervisor Title 04-01-95 Date			
	SURVEYOR CERTIFICATION I hereby certify that the well location shown on this plat was plotted from field notes of actual surveys made by me or under my supervision, and that the same is true and correct to the best of my belief. MARCH 30, 1995 Date Surveyed Signature & Seal of Professional Surveyor  W.O. Num. 95-11-0502 Certificate No. JOHN W. WEST, 676 RONALD J. EIDSON, 3239 GARY G. EIDSON, 12641			

U BLOWOUT PREVENTER ENGINEERING DATA



Single Open Face Flanged U Blowout Preventer

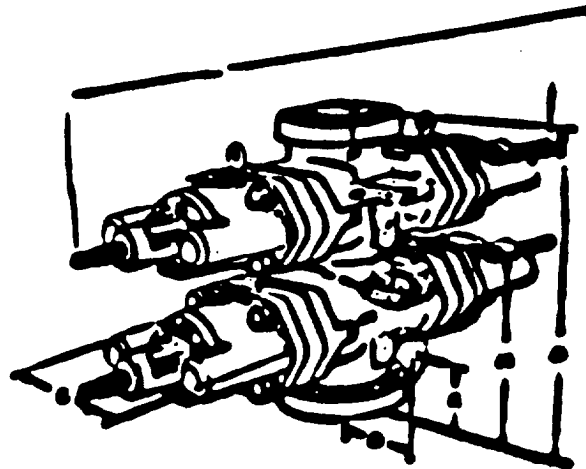
Side Outlets to 4" size (7-1/16" on 26-3/4" preventers) can be provided beneath each set of rams, on either or both sides of U preventers. Side outlet flanges are open face and have the same pressure rating as the vertical ram flanges. Valve removal preparations can be provided. To obtain a quotation, the number and size of outlets should be specified.

Flanges conform to API Standard 6A. Type 6BX flanges are standard for 10,000 psi, 15,000 psi, and 20,000 psi working pressures and for 5000 psi working pressures for 13-5/8" and larger bore preventers.

Although most preventers have open face flanges or Cameron clamp hubs, preventers with stubbed flanges can be furnished.

Sizes and Dimensions are in inches. The over-all length "A" given in the tables does not include the optional wedgelocks. No spacers between rams are included in the table of dimensions of double ram models. Preventers with spacers to clear tool joints can be obtained on special order. For information on preventers with spacers, or sizes not listed, consult your Cameron representative.

Hydraulic Control Connections to operate rams and bonnets are 1" NPT. There are two connections for each set of rams. Hydraulic ram lock connections are 1/2" NPT.

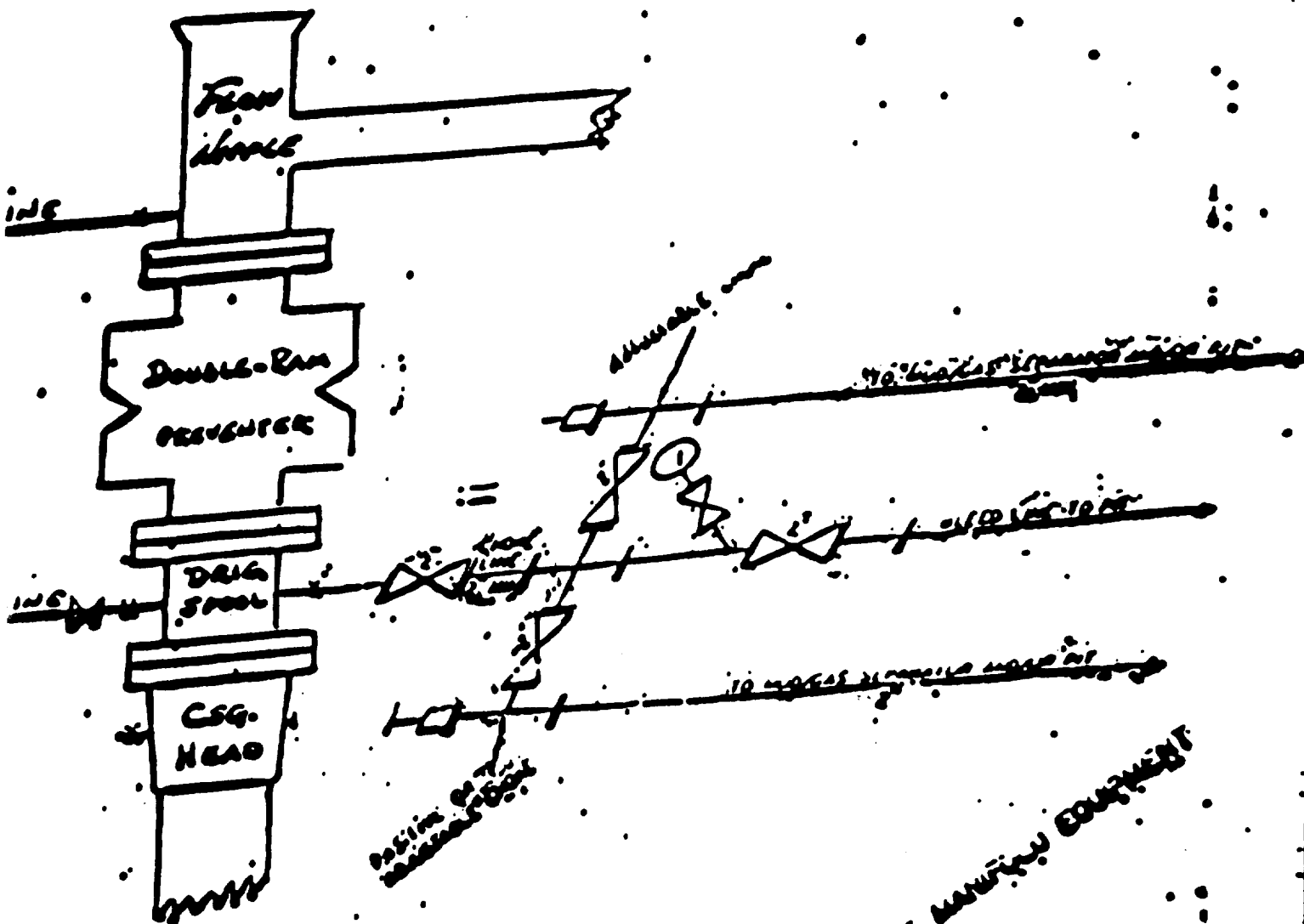


Double Open Face Flanged U Blowout Preventer

Engineering Data Designations. See Charts on Following Page

- A-1 Over-all length, bonnets closed, locking screws locked
- A-2 Over-all length, ram change, bonnets opened, locking screws unlocked
- B-1 Over-all height flanged
- B-2 As above, with Cameron clamp hubs
- C Over-all width without side outlets (max. width)
- D Centerline of preventer to outlet flange or hub face. Distance is variable.
- E-1 Centerline of side outlet (outlet below lower rams in double model) to bottom flange face
- E-2 As above, to bottom hub face
- F-1 Top of upper ram to top flange face
- F-2 As above, to top hub face
- G Ram height
- H-1 Centerline of side outlet between rams to bottom flange face
- H-2 As above, to bottom hub face
- J Top of lower ram to bottom of upper ram

10"/100 Cameron SS Space Saver
3000# Working Pressure
3000# Working Pressure Choke Manifold



24 CIOKE MANIPULI EQUIPMENT

100-100000-100000

100-100000-100000
100-100000-100000

RECEIVED
100-100000-100000