

DISTRICT I
P.O. Box 1970, Hobbs, NM 88241-1980

DISTRICT II
P.O. Drawer DD, Artesia, NM 88211-0719

DISTRICT III
1000 Rio Brazos Rd., Aztec, NM 87410

DISTRICT IV
P.O. BOX 2088, SANTA FE, N.M. 87504-2088

State of New Mexico
Energy, Minerals and Natural Resources Department

Form C-102
Revised February 10, 1994
Submit to Appropriate District Office
State Lease - 4 Copies
Fee Lease - 3 Copies

OIL CONSERVATION DIVISION

P.O. Box 2088
Santa Fe, New Mexico 87504-2088

AMENDED REPORT

WELL LOCATION AND ACREAGE DEDICATION PLAT

| | | | |
|-----------------------------------|--------------------------------------|--------------------|----------------------------|
| API Number 30-025-33571 | | Pool Code 46970 | Pool Name MONUMENT; ABO |
| Property Code 2723 | Property Name J.W. SMITH | | Well Number 11 |
| OGRID No. 4323 | Operator Name CHEVRON U.S.A. INC. | | Elevation 3666 |

Surface Location

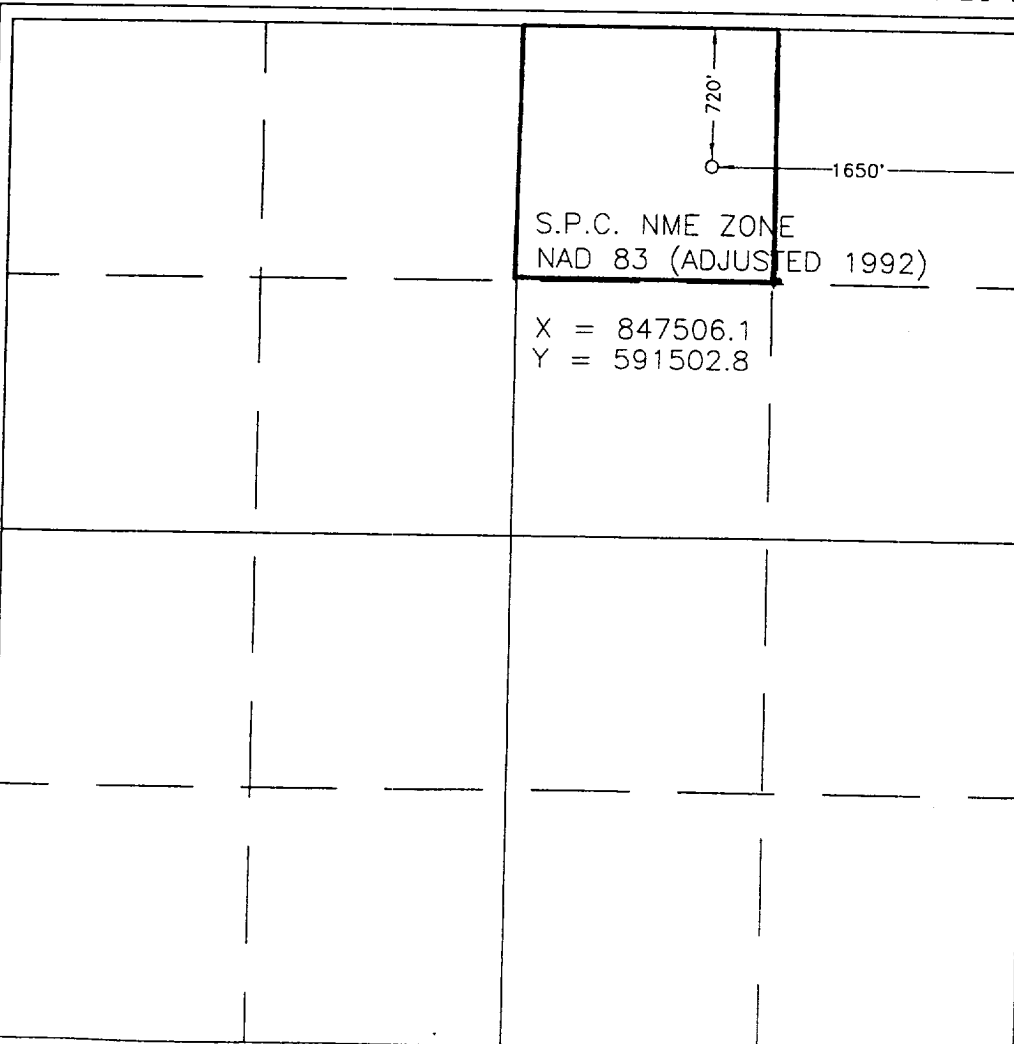
| UL or lot No. | Section | Township | Range | Lot Idn | Feet from the | North/South line | Feet from the | East/West line | County |
|---------------|---------|----------|-------|---------|---------------|------------------|---------------|----------------|--------|
| B | 34 | 19 S | 36 E | | 720 | NORTH | 1650 | EAST | LEA |

Bottom Hole Location If Different From Surface

| UL or lot No. | Section | Township | Range | Lot Idn | Feet from the | North/South line | Feet from the | East/West line | County |
|---------------|---------|----------|-------|---------|---------------|------------------|---------------|----------------|--------|
| | | | | | | | | | |

| | | | |
|-----------------------|-----------------|--------------------|-----------|
| Dedicated Acres 40 | Joint or Infill | Consolidation Code | Order No. |
|-----------------------|-----------------|--------------------|-----------|

NO ALLOWABLE WILL BE ASSIGNED TO THIS COMPLETION UNTIL ALL INTERESTS HAVE BEEN CONSOLIDATED OR A NON-STANDARD UNIT HAS BEEN APPROVED BY THE DIVISION



OPERATOR CERTIFICATION

I hereby certify that the information contained herein is true and complete to the best of my knowledge and belief.

J.K. Ripley
Signature

J. K. RIPLEY
Printed Name

T.A.
Title

9/5/96
Date

SURVEYOR CERTIFICATION

I hereby certify that the well location shown on this plat was plotted from field notes of actual surveys made by me or under my supervision and that the same is true and correct to the best of my belief.

AUGUST 31, 1996

Date Surveyed
Signature & Seal of Professional Surveyor
NEW MEXICO
RONALD J. EIPSON
3239
9-04-96
O. Num 96-11104
Certificate No. JOHN W. WEST 676
RONALD J. EIPSON 3239
NEW MEXICO PROFESSIONAL SURVEYOR 12641

10/30/15

ELF



Received