

District I  
1625 N. French Dr., Hobbs, NM 88240  
District II  
811 South First, Artesia, NM 88210  
District III  
1000 Rio Brazos Road, Aztec, NM 87410  
District IV  
2040 South Pacheco, Santa Fe, NM 87505

State of New Mexico  
Energy Minerals and Natural Resources

Form C-101  
Revised March 17, 1999

Oil Conservation Division  
2040 South Pacheco  
Santa Fe, NM 87505

Submit to appropriate District Office  
State Lease - 6 Copies  
Fee Lease - 5 Copies

AMENDED REPORT

**APPLICATION FOR PERMIT TO DRILL, RE-ENTER, DEEPEN, PLUGBACK, OR ADD A ZONE**

<sup>1</sup> Operator Name and Address <b>Read &amp; Stevens, Inc. P. O. Box 1518 Roswell, New Mexico 88202</b>		<sup>2</sup> OGRID Number <b>018917</b>
<sup>3</sup> Property Code <b>29494</b>	<sup>5</sup> Property Name <b>Klein 5</b>	<sup>4</sup> API Number <b>30-025-35847</b>
		<sup>6</sup> Well No.

<sup>7</sup> Surface Location

UL or lot no.	Section	Township	Range	Lot Idn	Feet from the	North/South line	Feet from the	East/West line	County
I	5	20S	36E		2020	South	330	East	Lea

<sup>8</sup> Proposed Bottom Hole Location If Different From Surface

UL or lot no.	Section	Township	Range	Lot Idn	Feet from the	North/South line	Feet from the	East/West line	County

<sup>9</sup> Proposed Pool 1 <b>Proposed Wildcat (<del>North Osuda</del> Devonian)</b>	<sup>10</sup> Proposed Pool 2
---	-------------------------------

Work Type Code <b>N</b>	<sup>11</sup> Well Type Code <b>0</b>	<sup>12</sup> Cable/Rotary <b>R</b>	<sup>14</sup> Lease Type Code <b>P</b>	<sup>13</sup> Ground Level Elevation <b>3,632'</b>
<sup>15</sup> Multiple <b>No</b>	<sup>16</sup> Proposed Depth <b>10,900'</b>	<sup>17</sup> Formation <b>Devonian</b>	<sup>18</sup> Contractor <b>Patterson</b>	<sup>19</sup> Spud Date <b>3-1-2002</b>

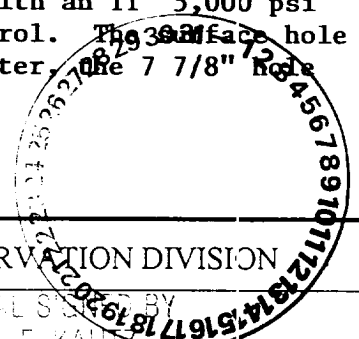
<sup>21</sup> Proposed Casing and Cement Program

Hole Size	Casing Size	Casing weight/foot	Setting Depth	Sacks of Cement	Estimated TOC
17 1/2"	13 3/8"	54.5#	400'	425	Surf
11"	8 5/8"	32#	4,500'	1300	Surf
7 7/8"	5 1/2"	17#	10,900'	900	Tie Back

<sup>22</sup> Describe the proposed program. If this application is to DEEPEN or PLUG BACK, give the data on the present productive zone and proposed new productive zone. Describe the blowout prevention program, if any. Use additional sheets if necessary.

Read & Stevens will drill the above developmental oil well with an 11" 5,000 psi double ram and 5,000 psi annular preventer for pressure control. The 30" surface hole will be drilled with fresh water, intermediate with brine water, the 7 7/8" hole with cut brine, lowering the water loss to <10cc @ 10,100'.

Permit Expires 1 Year From Approval Date Unless Drilling Underway



<sup>23</sup> I hereby certify that the information given above is true and complete to the best of my knowledge and belief.		OIL CONSERVATION DIVISION	
Signature <i>John C. Maxey, Jr.</i>	Approved by: PAUL F. KAUTZ		
Printed name <b>John C. Maxey, Jr.</b>	Title: <b>PETROLEUM ENGINEER</b>	Approval Date:	Expiration Date:
Date <b>2-22-02</b>	Phone: <b>505/622-3770 Ext 224</b>	Conditions of Approval: <b>FEB 20 2002</b>	Attached <input type="checkbox"/>

JSJ

MP

DISTRICT I  
 P. O. Box 1980  
 Hobbs, NM 88241-1980

State of New Mexico  
 Energy, Minerals, and Natural Resources Department

Form C-102  
 Revised 02-10-94

Instructions on back

DISTRICT II  
 P. O. Drawer DD  
 Artesia, NM 88211-0719

**OIL CONSERVATION DIVISION**  
 P. O. Box 2088  
 Santa Fe, New Mexico 87504-2088

Submit to the Appropriate  
 District Office  
 State Lease - 4 copies  
 Fee Lease - 3 copies

DISTRICT III  
 1000 Rio Brazos Rd.  
 Aztec, NM 87410

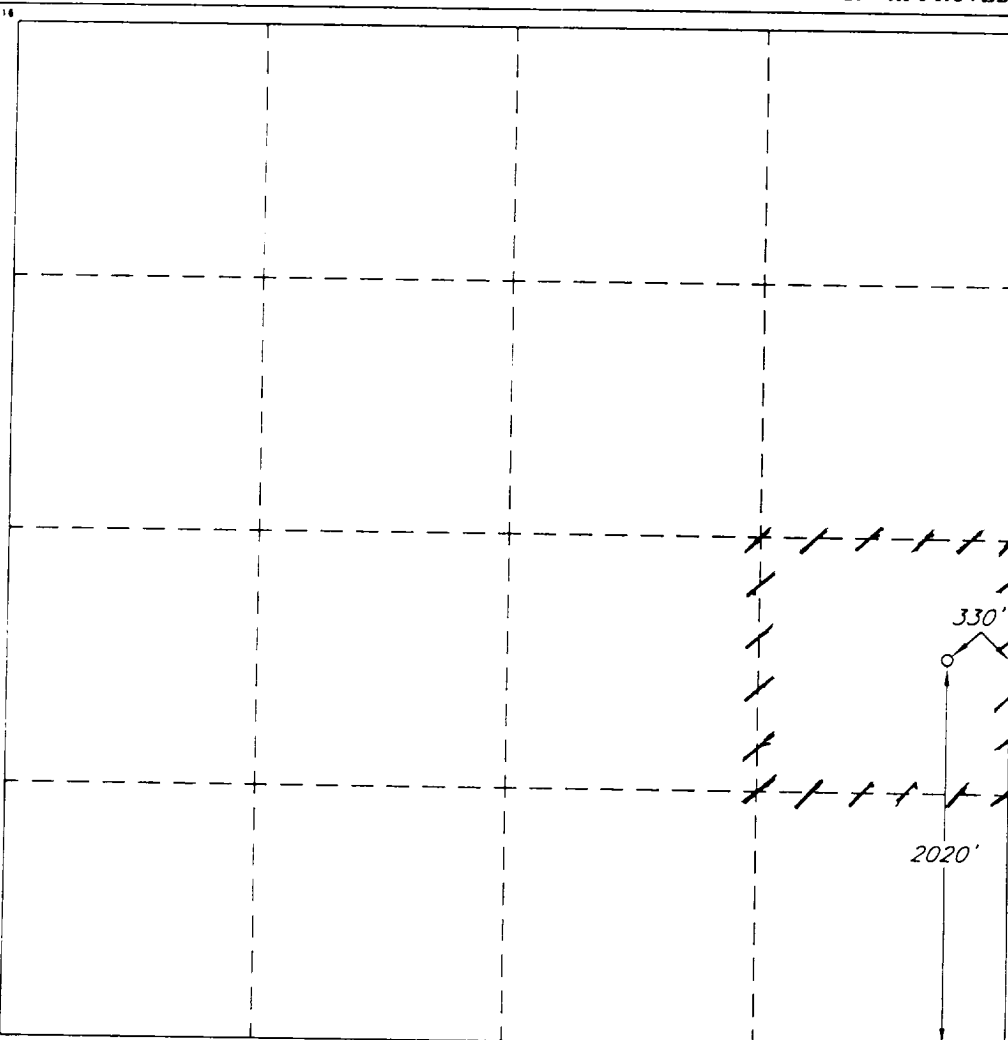
AMENDED REPORT

DISTRICT IV  
 P. O. Box 2088  
 Santa Fe, NM 87507-2088

**WELL LOCATION AND ACREAGE DEDICATION PLAT**

1 API Number <b>30-025-35847</b>		2 Pool Code <b>97155</b>		3 Pool Name <b>Wildcat; Devonian</b>					
4 Property Code <b>29494</b>		5 Property Name <b>KLEIN '5'</b>						6 Well Number <b>1</b>	
7 OGRID No. <b>018917</b>		8 Operator Name <b>READ &amp; STEVENS, INC.</b>						9 Elevation <b>3632'</b>	
10 SURFACE LOCATION									
UL or lot no. <b>I</b>	Section <b>5</b>	Township <b>20 SOUTH</b>	Range <b>38 EAST, N.M.P.M.</b>	Lot Ida	Feet from the <b>2020'</b>	North/South line <b>SOUTH</b>	Feet from the <b>330'</b>	East/West line <b>EAST</b>	County <b>LEA</b>
11 BOTTOM HOLE LOCATION IF DIFFERENT FROM SURFACE									
UL or lot no.	Section	Township	Range	Lot Ida	Feet from the	North/South line	Feet from the	East/West line	County
12 Dedicated Acres <b>40</b>		13 Joint or Infill		14 Consolidation Code		15 Order No.			

NO ALLOWABLE WELL BE ASSIGNED TO THIS COMPLETION UNTIL ALL INTERESTS HAVE BEEN CONSOLIDATED OR A NON-STANDARD UNIT HAS BEEN APPROVED BY THE DIVISION



**OPERATOR CERTIFICATION**

I hereby certify that the information contained herein is true and complete to the best of my knowledge and belief.

Signature  
  
 Printed Name  
**John C. Mazy, Jr.**  
 Title  
**Operations Manager**  
 Date  
**2-22-02**

**SURVEYOR CERTIFICATION**

I hereby certify that the well location shown on this plat was plotted from field notes of actual surveys made by me or under my supervision, and that the same is true and correct to the best of my belief.

Date of Survey  
**FEBRUARY 13, 2002**  
 Signature and Seal of Professional Surveyor  
  
 Certificate No.  
**V. L. BEZNER, R.P.S. #7920**  
 JOB # 80429 / 71 SE / J.C.P.

# TIMBER // SHARP DRILLING

B.O.P. Equipment Intended for use on Rig # 24

Well To Be drilled for TMB2/Sharp

- \* All B.O.P equipment is H2S Trim \*
- \* All Accumulators are Kookey Type-80 : Dual Power Electric/Air \*
- \* Choke Manifold: \* See sheet 2
- 4" Valves : Cameron F/FC, Shaffer DB Hydraulic
- 2" Check Valve: Cameron Type R
- 2" Valves : Cameron or Shaffer

**Annular Shaffer Type:** Spherical

**Annular PSI:** 3000

( If Shaffer: Spherical , If Hydril: Type GK )

**BOP Type** Shaffer LWS

( If Shaffer: LWS or SL, If Cameron: Type U )

**BOP Size:** 13 5/8" - 5000 PSI

Rotating Head Type Smith

Rot-Head Furnished By TMB2

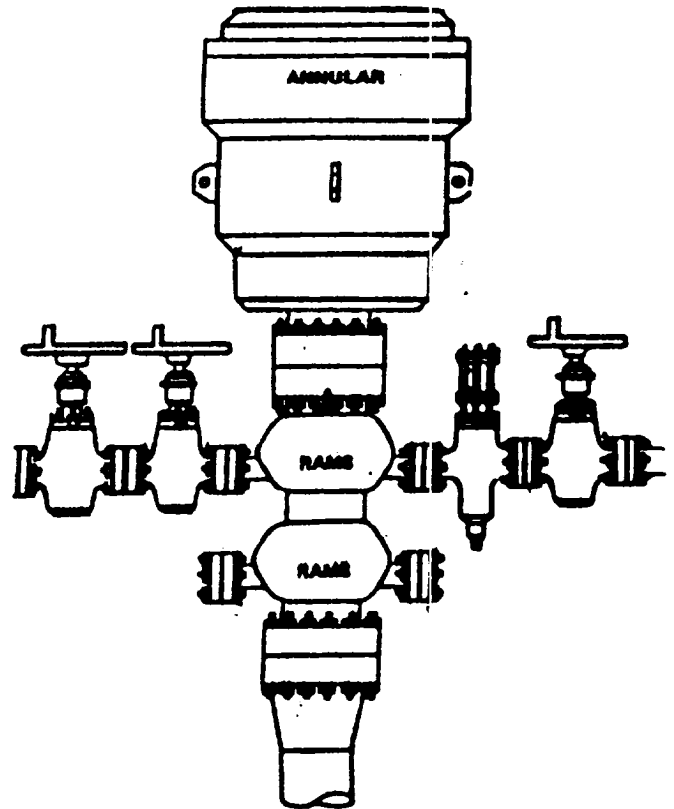
Rams in top gate: 4 1/2" pipe

Rams in bottom: Blinds

Side Outlets used:

Bottom X Top     

4" Valves on Tee



B.O.P. Equipment Intended for use on Rig # 24

Well To Be drilled for TMB2/Sharp

\* All Valves (H2S) \*

**Choke Manifold:**

Pressure Rating 3,000 or 5,000 (as Req.)

1 - 4" Valves

2 - 2" Valves

2 - 2" Adjustable Chokes

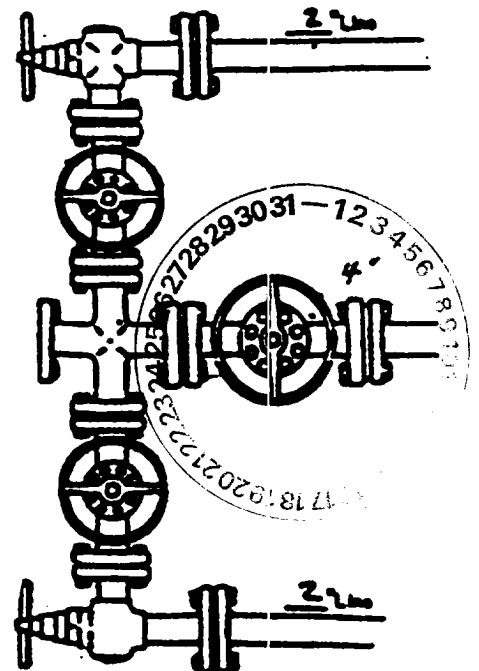
Valve Types Used:

Cameron - F or FC

Shaffer - B Floseal

WKM - type 2

Chokes - Cameron H2 or TC unbolt



ABOVE DATE DOES NOT  
INDICATE WHEN  
CONFIDENTIAL LOGS  
WILL BE RELEASED

ELF

7/18/02