

DISTRICT I

P.O. Box 1980, Hobbs, NM 88241-1980

DISTRICT II

P.O. Box Drawer DD, Artesia, NM 88211-0719

DISTRICT III

1000 Rio Brazos Rd., Aztec, NM 87410

DISTRICT IV

P.O. Box 2088, Santa Fe, NM 87504-2088

State of New Mexico  
Energy, Minerals and Natural Resources Department

OIL CONSERVATION DIVISION

P.O. Box 2088  
Santa Fe, New Mexico 87504-2088

Form C-101

Revised February 10, 1994

Instructions on back

Submit to Appropriate District Office

State Lease - 6 Copies

Fee Lease - 5 Copies

AMENDED REPORT

APPLICATION FOR PERMIT TO DRILL, RE-ENTER, DEEPEN, PLUGBACK, OR ADD A ZONE

<sup>1</sup> Operator Name and Address TEXACO EXPLORATION & PRODUCTION INC. P.O. Box 3109, Midland Texas 79702		<sup>2</sup> OGRID Number 022351
		<sup>3</sup> API Number 30-025-33328
<sup>4</sup> Property Code 10963	<sup>5</sup> Property Name V. M. HENDERSON	<sup>6</sup> Well No. 15

<sup>7</sup> Surface Location

UI or lot no.	Section	Township	Range	Lot.Idn	Feet From The	North/South Line	Feet From The	East/West Line	County
G	30	21-S	37-E		1650	NORTH	1650	EAST	LEA

<sup>8</sup> Proposed Bottom Hole Location If Different From Surface

UI or lot no.	Section	Township	Range	Lot.Idn	Feet From The	North/South Line	Feet From The	East/West Line	County
<sup>9</sup> Proposed Pool 1 PADDOCK					<sup>10</sup> Proposed Pool 2 BLINEBRY OIL & GAS				

<sup>11</sup> Work Type Code N	<sup>12</sup> WellType Code O/S	<sup>13</sup> Rotary or C.T. ROTARY	<sup>14</sup> Lease Type Code P	<sup>15</sup> Ground Level Elevation 3487'
<sup>16</sup> Multiple No	<sup>17</sup> Proposed Depth 6100'	<sup>18</sup> Formation PADDOCK/BLINEBRY	<sup>19</sup> Contractor NABORS	<sup>20</sup> Spud Date 4/1/96

<sup>21</sup> Proposed Casing and Cement Program

SIZE OF HOLE	SIZE OF CASING	WEIGHT PER FOOT	SETTING DEPTH	SACKS OF CEMENT	EST. TOP
11	8 5/8	24#	1150'	500 SACKS	SURFACE
7 7/8	5 1/2	15.5 & 17#	6100'	1400 SACKS	SURFACE

<sup>22</sup> Describe the proposed program. If this application is to DEEPEN or PLUG BACK give the data on the present productive zone and proposed new productive zone. Describe the blowout prevention program, if any. Use additional sheets if necessary.

CEMENTING PROGRAM:

SURFACE CASING - 400 SACKS CLASS C W/ 2% GEL, 2% CaCl2 (14.2 PPG, 1.50 CF/S, 7.45 GW/S). F/B 100 SACKS CLASS C W/ 2% CaCl2 (14.8 PPG, 1.34 CF/S, 6.3 GW/S).

PRODUCTION CASING - 1st STG: 600 SACKS 50/50 POZ CLASS H W/ 2% GEL, 5% SALT, 1/4# FLOCELE (14.2 PPG, 1.35 CF/S, 6.3 GW/S).

DV TOOL @ 4000' - 2nd STG: 700 SACKS 35/65 POZ CLASS H W/ 6% GEL, 5% SALT, 1/4# FLOCELE (12.8 PPG, 1.94 CF/S, 10.4 GW/S). F/B 100 SACKS CLASS H (15.6 PPG, 1.18 CF/S, 5.2 GW/S).

THERE ARE NO OTHER OPERATORS IN THIS QUARTER QUARTER SECTION.

Permit Expires 1 Year From Approval  
~~Date Unless Drilling Underway~~

<sup>23</sup> I hereby certify that the rules and regulations of the Oil Conservation Division have been complied with and that the information given above is true and complete to the best of my knowledge and belief.		<b>OIL CONSERVATION DIVISION</b>	
Signature <i>C. Wade Howard</i>		Approved By: GARY WINK FIELD REP. II	
Printed Name C. Wade Howard		Title:	
Title Eng. Assistant		Approval Date <b>MAR 14 1996</b>	Expiration Date:
Date 3/12/96	Telephone 688-4606	Conditions of Approval: Attached <input type="checkbox"/>	

2



DISTRICT I  
P. O. Box 1980, Hobbs, NM 88240

DISTRICT II  
P. O. Drawer DD, Artesia, NM 88210

DISTRICT III  
1000 Rio Brazos Rd., Aztec, NM 87410

DISTRICT IV  
P. O. Box 2088, Santa Fe, NM 87504-2088

State of New Mexico  
Energy, Minerals and Natural Resources Department

Form C-102  
Revised February 10, 1994

Instructions on back

OIL CONSERVATION DIVISION  
PO Box 2088  
Santa Fe, NM 87504-2088

Submit to Appropriate District Office

State Lease-4 copies  
Fee Lease-3 copies

AMENDED REPORT

WELL LOCATION AND ACREAGE DEDICATION PLAT

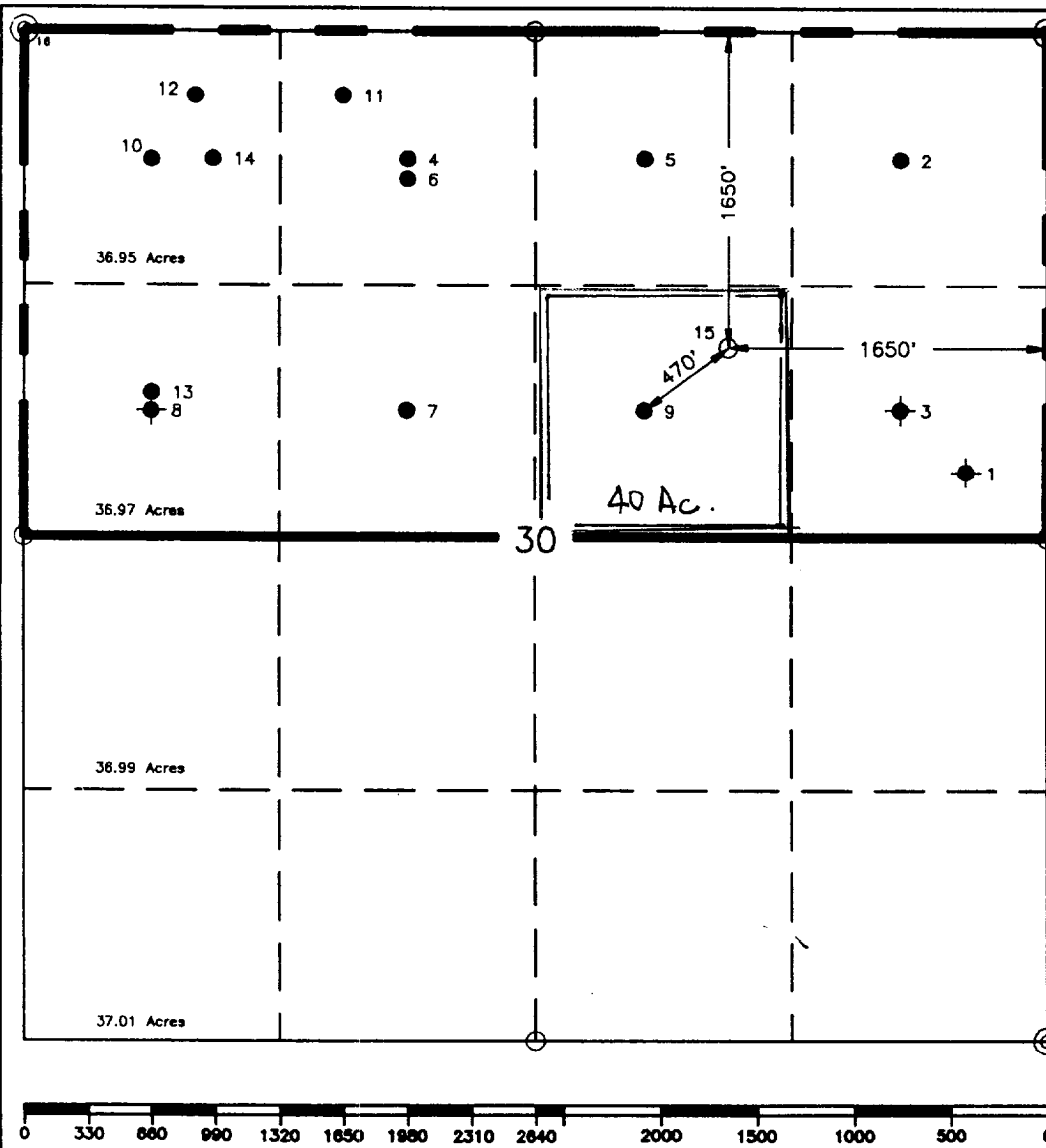
<sup>1</sup> API Number		<sup>2</sup> Pool Code		<sup>3</sup> Pool Name	
				Paddock	
<sup>4</sup> Property Code 10963		<sup>5</sup> Property Name V. M. Henderson			<sup>6</sup> Well Number 15
<sup>7</sup> OGRID No. 22351		<sup>8</sup> Operator Name TEXACO EXPLORATION & PRODUCTION, INC.			<sup>9</sup> Elevation 3487'

<sup>10</sup> Surface Location									
UL or lot no.	Section	Township	Range	Lot Idn	Feet from the	North/South line	Feet from the	East/West line	<sup>7</sup> County
G	30	21-S	37-E		1650'	North	1650'	East	Lea

<sup>11</sup> Bottom Hole Location If Different From Surface									
UL or lot no.	Section	Township	Range	Lot Idn	Feet from the	North/South line	Feet from the	East/West line	<sup>7</sup> County

<sup>12</sup> Dedicated Acres 40	<sup>13</sup> Joint or Infill	<sup>14</sup> Consolidation Code	<sup>15</sup> Order No.
-------------------------------------	-------------------------------	----------------------------------	-------------------------

NO ALLOWABLE WILL BE ASSIGNED TO THIS COMPLETION UNTIL ALL INTERESTS HAVE BEEN CONSOLIDATED OR A NON-STANDARD UNIT HAS BEEN APPROVED BY THE DIVISION.



<b><sup>16</sup> OPERATOR CERTIFICATION</b>	
I hereby certify that the information contained herein is true and complete to the best of my knowledge and belief.	
Signature	<i>C. Wade Howard</i>
Printed Name	C. Wade Howard
Position	Engineer's Assistant
Company	Texaco Expl. & Prod. Inc.
Date	March 6, 1996
<b><sup>17</sup> SURVEYOR CERTIFICATION</b>	
I hereby certify that the well location shown on this plat was plotted from field notes of actual surveys made by me or under my supervision, and that the same is true and correct to the best of my knowledge and belief.	
Date Surveyed	March 5, 1996
Signature & Seal of Professional Surveyor	<i>John S. Piper</i>
Certificate No.	7254 John S. Piper
Sheet	

○ = Staked Location   ● = Producing Well   ◐ = Inactive Well   ◑ = Water Supply Well   ● = Plugged & Abandon Well

DISTRICT I  
P. O. Box 1980, Hobbs, NM 88240

DISTRICT II  
P. O. Drawer DD, Artesia, NM 88210

DISTRICT III  
1000 Rio Brazos Rd., Aztec, NM 87410

DISTRICT IV  
P. O. Box 2088, Santa Fe, NM 87504-2088

State of New Mexico  
Energy, Minerals and Natural Resources Department

Form C-102  
Revised February 10, 1994

Instructions on back

OIL CONSERVATION DIVISION  
PO Box 2088  
Santa Fe, NM 87504-2088

Submit to Appropriate District Office

State Lease-4 copies  
Fee Lease-3 copies

WELL LOCATION AND ACREAGE DEDICATION PLAT

AMENDED REPORT

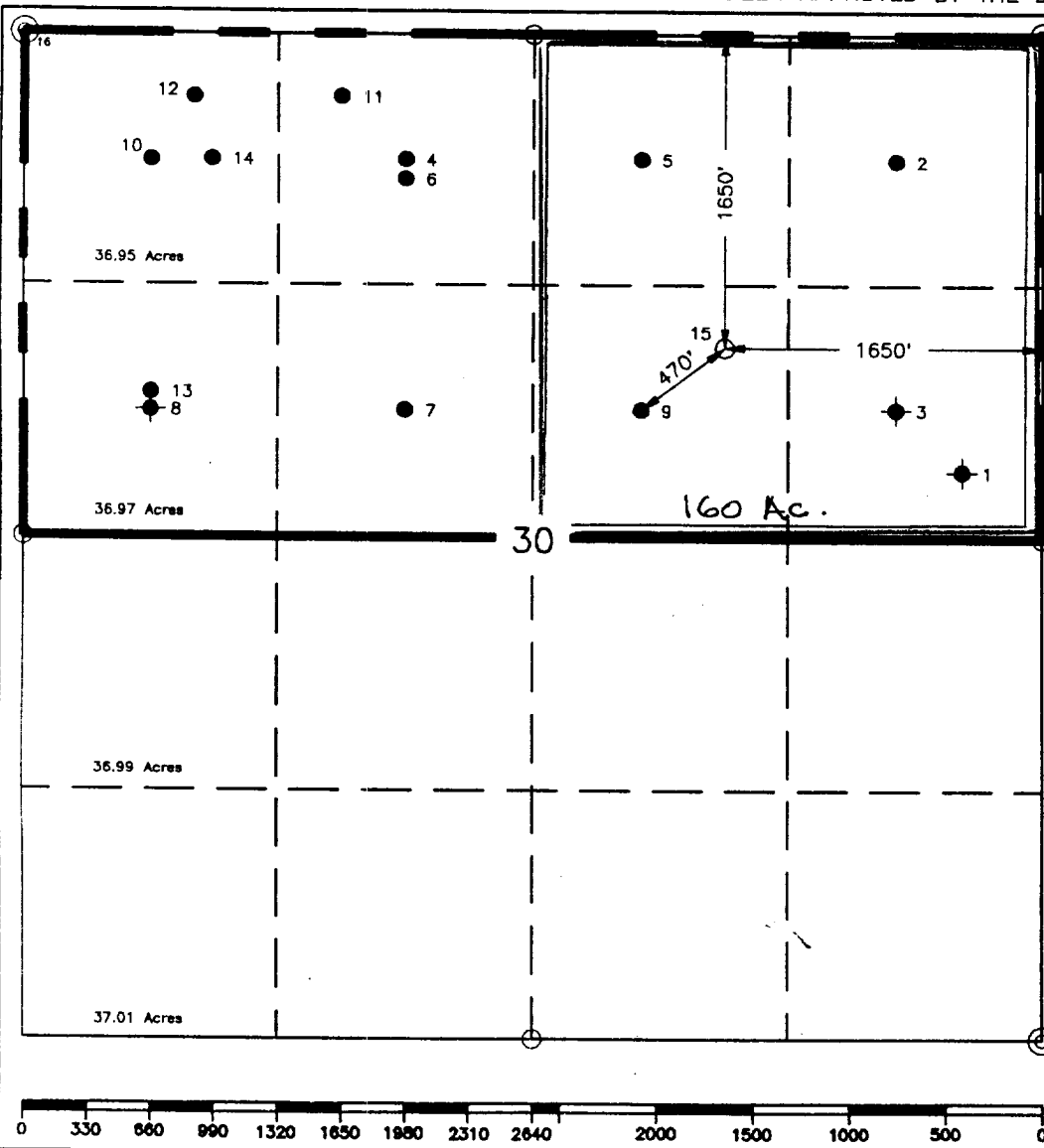
<sup>1</sup> API Number		<sup>2</sup> Pool Code		<sup>3</sup> Pool Name	
Property Code 10963		Property Name V. M. Henderson		Well Number 15	
OGRID No. 22351		Operator Name TEXACO EXPLORATION & PRODUCTION, INC.		Elevation 3487'	

<sup>10</sup> Surface Location									
UL or lot no.	Section	Township	Range	Lot Idn	Feet from the	North/South line	Feet from the	East/West line	County
G	30	21-S	37-E		1650'	North	1650'	East	Lea

<sup>11</sup> Bottom Hole Location If Different From Surface									
UL or lot no.	Section	Township	Range	Lot Idn	Feet from the	North/South line	Feet from the	East/West line	County

<sup>12</sup> Dedicated Acres 160	<sup>13</sup> Joint or Infill	<sup>14</sup> Consolidation Code	<sup>15</sup> Order No.
--------------------------------------	-------------------------------	----------------------------------	-------------------------

NO ALLOWABLE WILL BE ASSIGNED TO THIS COMPLETION UNTIL ALL INTERESTS HAVE BEEN CONSOLIDATED OR A NON-STANDARD UNIT HAS BEEN APPROVED BY THE DIVISION.



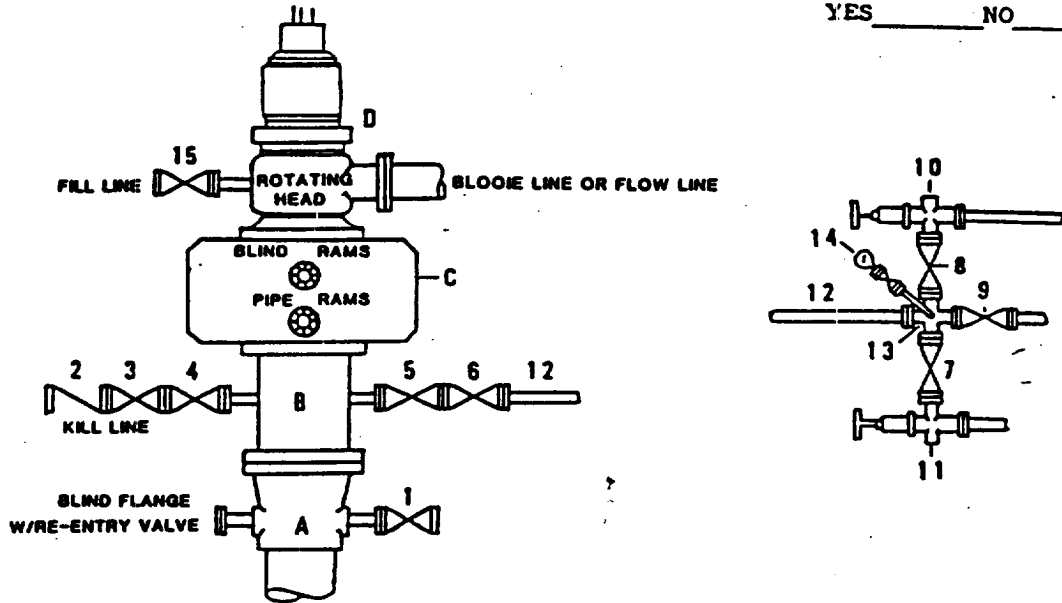
<sup>17</sup> OPERATOR CERTIFICATION	
I hereby certify that the information contained herein is true and complete to the best of my knowledge and belief.	
Signature	<i>C. Wade Howard</i>
Printed Name	C. Wade Howard
Position	Engineer's Assistant
Company	Texaco Expl. & Prod. Inc.
Date	March 6, 1996
<sup>18</sup> SURVEYOR CERTIFICATION	
I hereby certify that the well location shown on this plat was plotted from field notes of actual surveys made by me or under my supervision, and that the same is true and correct to the best of my knowledge and belief.	
Date Surveyed	March 5, 1996
Signature & Seal of Professional Surveyor	<i>John S. Piper</i>
Certificate No.	7254 John S. Piper
Sheet	

○ = Staked Location ● = Producing Well ○ = Injection Well ○ = Water Supply Well ● = Plugged & Abandon Well



**DRILLING CONTROL  
CONDITION II-B 3000 WP  
FOR AIR DRILLING OR  
WHERE NITROGEN OR AIR BLOWS ARE EXPECTED**

H<sub>2</sub>S TRIM REQUIRED  
YES \_\_\_\_\_ NO \_\_\_\_\_



**DRILLING CONTROL**

**MATERIAL LIST - CONDITION II - B**

- A      Texaco Wellhead
- B      3000# W.P. drilling spool with a 2" minimum flanged outlet for kill line and 3" minimum flanged outlet for choke line.
- C      3000# W.P. Dual ram type preventer, hydraulic operated with 1" steel, 3000# W.P. control lines (where sub-structure height is adequate, 2 - 3000# W.P. single ram type preventers may be utilized).
- D      Rotating Head with fill up outlet and extended Blooie Line.
- 1,3,4, 7,8,      2" minimum 3000# W.P. flanged full opening steel gate valve, or Halliburton Lo Torc Plug valve.
- 2      2" minimum 3000# W.P. back pressure valve.
- 5,6,9      3" minimum 3000# W.P. flanged full opening steel gate valve, or Halliburton Lo Torc Plug valve.
- 12      3" minimum schedule 80, Grade "B", seamless line pipe.
- 13      2" minimum x 3" minimum 3000# W.P. flanged cross.
- 10,11      2" minimum 3000# W.P. adjustable choke bodies.
- 14      Cameron Mud Gauge or equivalent ( location optional in choke line).
- 15      2" minimum 3000# W.P. flanged or threaded full opening steel gate valve, or Halliburton Lo Torc Plug valve.



TEXACO, INC.  
MIDLAND DIVISION  
MIDLAND, TEXAS



SCALE	DATE	EST NO	DRG NO
DRAWN BY			
CHECKED BY			
APPROVED BY			

EXHIBIT C

9/15/96

Received  
Hobbs  
OGD