

NEW MEXICO OIL CONSERVATION COMMISSION
WELL LOCATION AND ACREAGE DEDICATION PLAT

Form 1-102
Supersedes 0-128
Effective 1-1-66

All distances must be from the outer boundaries of the Section.

Operator El Paso Natural Gas Company			Lease Shell "F" State Com		Well No. 1
Unit Letter N	Section 6	Township 21 South	Range 36 East	County Lea	

Actual Well Location of Well:

3566	feet from the South line and	1980	feet from the West line
Ground Level Elev. 3554.1	Producing Formation Yates, Seven River, Queen	Pool Eumont	Dedicated Acreage: 228 Acres

1. Outline the acreage dedicated to the subject well by colored pencil or hachure marks on the plat below.

2. If more than one lease is dedicated to the well, outline each and identify the ownership thereof (both as to working interest and royalty).

3. If more than one lease of different ownership is dedicated to the well, have the interests of all owners been consolidated by communitization, unitization, force-pooling, etc?

☐ Yes ☐ No If answer is "yes," type of consolidation _____

If answer is "no," list the owners and tract descriptions which have actually been consolidated. (Use reverse side of this form if necessary.) _____

No allowable will be assigned to the well until all interests have been consolidated (by communitization, unitization, forced-pooling, or otherwise) or until a non-standard unit, eliminating such interests, has been approved by the Commission.

Lot 12 L	Lot 11 K	Lot 10 J	Lot 9 I
Lot 13 M	Lot 14 N	Lot 15 O	Lot 16 P

← 1980

3566

CERTIFICATION

I hereby certify that the information contained herein is true and complete to the best of my knowledge and belief.

Name
H. B. Sordani

Position
Asst. Production Services

Company
El Paso Natural Gas Co.

Date
Dec. 12, 1977

I hereby certify that the well location shown on this plat was plotted from field notes of actual surveys made by me or under my supervision, and that the same is true and correct to the best of my knowledge and belief.

Date Surveyed
December 6, 1977

Registered Professional Engineer and/or Land Surveyor
Truman Gaskin

Certificate No. **2126**

0 330 660 990 1320 1650 1980 2310 2640 2000 1500 1000 500 0

RECEIVED

1957

OIL CONSERVATION COMM.
HOBBS, N. M.

111

NEW MEXICO OIL CONSERVATION COMMISSION
WELL LOCATION AND ACREAGE DEDICATION PLAT

Form C-104
Supersedes C-128
Effective 1-1-65

All distances must be from the outer boundaries of the Section.

El Paso Natural Gas Company			Shell "E" State Com		Well No. 2
Section N	Section 6	Township 21South	Range 36East	County Lea	
Initial Footage Location of Well:					
3566 feet from the South line and		1980 feet from the West line			
Initial Footage Elev. 3554.1	Producing Formation Yates, Seven River, Queen		Pool Eumont		Dedicated Acreage: 228 Acres

1. Outline the acreage dedicated to the subject well by colored pencil or hatchure marks on the plat below.

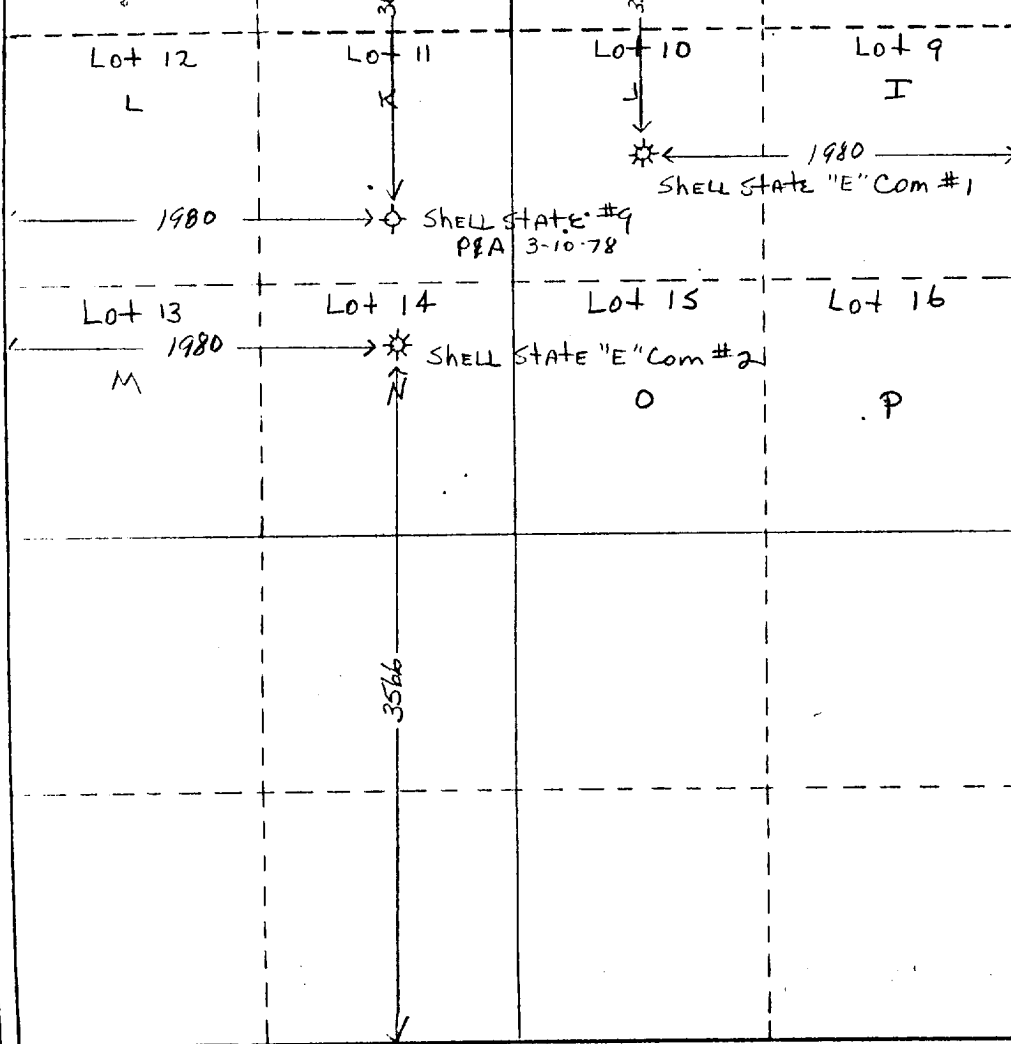
2. If more than one lease is dedicated to the well, outline each and identify the ownership thereof (both as to working interest and royalty).

3. If more than one lease of different ownership is dedicated to the well, have the interests of all owners been consolidated by communitization, unitization, force-pooling, etc?

☐ Yes ☐ No If answer is "yes," type of consolidation

If answer is "no," list the owners and tract descriptions which have actually been consolidated. (Use reverse side of this form if necessary.)

No allowable will be assigned to the well until all interests have been consolidated (by communitization, unitization, forced-pooling, or otherwise) or until a non-standard unit, eliminating such interests, has been approved by the Commission.



CERTIFICATION

I hereby certify that the information contained herein is true and complete to the best of my knowledge and belief.

[Signature]

Name
Administrator of Prod Svs

Position
El Paso Natural Gas Co.

Company
January 19, 1979

Date

I hereby certify that the well location shown on this plat was plotted from field notes of actual surveys made by me or under my supervision, and that the same is true and correct to the best of my knowledge and belief.

December 6, 1977

Date Surveyed

Truman Gaskin

Registered Professional Engineer
and/or Land Surveyor

2126

Certificate No.

0 330 660 990 1320 1650 1980 2310 2640 2000 1500 1000 500 0

Submit to Appropriate
District Office
State Lease - 4 copies
Fee Lease - 3 copies

State of New Mexico
Energy, Minerals and Natural Resources Department

Form C-102
Revised 1-1-89

OIL CONSERVATION DIVISION

P.O. Box 2088
Santa Fe, New Mexico 87504-2088

DISTRICT I
P.O. Box 1980, Hobbs, NM 88240

DISTRICT II
P.O. Drawer DD, Artesia, NM 88210

DISTRICT III
1000 Rio Brazos Rd., Aztec, NM 87410

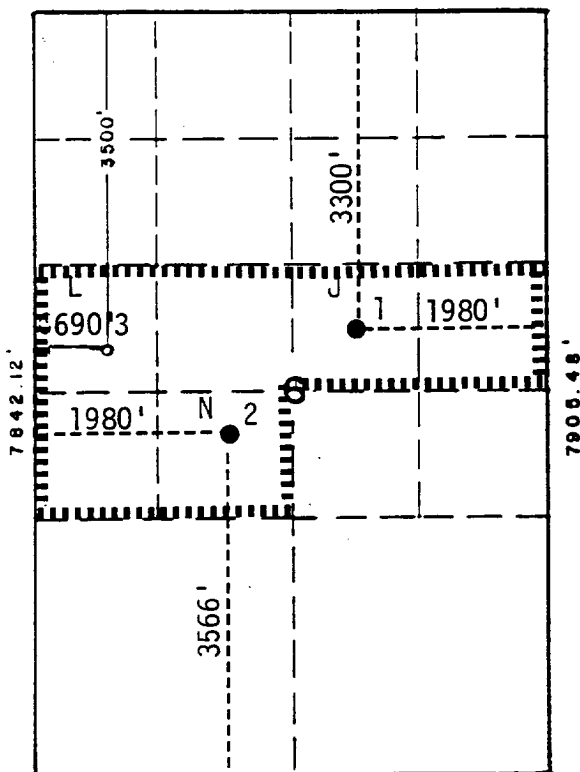
WELL LOCATION AND ACREAGE DEDICATION PLAT

All Distances must be from the outer boundaries of the section

Operator			Lease		Well No.
Meridian Oil Company			Shell E State Com.		2
Unit Letter	Section	Township	Range	County	
N	6	21-S	36-E	NMPM Lea	
Actual Footage Location of Well:					
3566	feet from the	South	line and	1980	feet from the West line
Ground level Elev.		Producing Formation		Pool	Dedicated Acreage:
3544.1' GR		Yates		Eumont (Yates-7Rvs-Queen)	230.32 Acres

- Outline the acreage dedicated to the subject well by colored pencil or hatchure marks on the plat below.
- If more than one lease is dedicated to the well, outline each and identify the ownership thereof (both as to working interest and royalty).
- If more than one lease of different ownership is dedicated to the well, have the interest of all owners been consolidated by communitization, unitization, force-pooling, etc.?
☐ Yes ☐ No If answer is "yes" type of consolidation _____
If answer is "no" list the owners and tract descriptions which have actually been consolidated. (Use reverse side of this form if necessary).
No allowable will be assigned to the well until all interests have been consolidated (by communitization, unitization, forced-pooling, or otherwise) or until a non-standard unit, eliminating such interest, has been approved by the Division.

Simultaneous Dedication



SCALE: 1" = 2000'

OPERATOR CERTIFICATION

I hereby certify that the information contained herein is true and complete to the best of my knowledge and belief.

Signature
Maria L. Perez
Printed Name
Maria L. Perez
Position
Production Asst.
Company
Meridian Oil Company
Date
7-23-91

SURVEYOR CERTIFICATION

I hereby certify that the well location shown on this plat was plotted from field notes actual surveys made by me or under my supervision, and that the same is true and correct to the best of my knowledge and belief.

Date Surveyed

Signature & Seal of
Professional Surveyor

Certificate No.



Public Information

Copyrighted Reproduction Prohibited

COUNTY **LEA** FIELD **Eumont** STATE **NM**
 OPR **EL PASO NATURAL GAS CO.** API **30-025-25773**
 NO **1** LEASE **Shell "F" State Com.** MAP
 Sec 6, T21S, R36E COORD
 3566' FSL, 1980' FWL of Sec 8-3-22 NM
 3 mi NW/Oil Center SPD **3-25-78** CMP **7-10-78**

CSC

8 5/8" at 1205' w/550 sx
 4 1/2" at 3710' w/1035 sx

WELL CLASS: INIT D FIN DG ELEV		L & S	
FORMATION	DATUM	FORMATION	DATUM
ID 3713' (QUEEN)		PBD 3065'	

IP (Yates) Perfs 2946-96' F 701 MCFGPD. Pot based on 24 hr
 test thru 3/8" chk. GOR TSTM; gty (NR); CP 326#, TP 250#

CONTR **Capitan Drlg.** OPRSELEV **3554' GL** PD **3700' RT**

F.R. 12-26-77
 (Yates, Seven Rivers, Queen)
 3-28-78 TD 1205'; WOC
 4-4-78 TD 3713'; WOCU
 4-11-78 TD 3713'; WOCU
 4-18-78 TD 3713'; WOCU
 5-8-78 TD 3713'; PBD 3597'; SI
 Perf (Queen) 3662-76'
 Swbd trace oil (3662-76')
 Sqzd 3662-76'
 Perf (Queen) 3375-3633' (overall)
 Swbd wtr (3375-3633')
 Sqzd 3375-3633'
 BP @ 3597'
 Perf (Queen) 3375-3581' (overall)
 5-15-78 TD 3713'; PBD 3597'; TOP
 6-13-78 TD 3713'; PBD 3597'; TOP 8-3-22 NM

LEA
EL PASO NATURAL GAS CO. Eumont
1 Shell "F" State Com.
Sec 6, T21S, R36E

NM
Page #2

6-27-78 TD 3713'; PBD 3597'; TOP
7-17-78 TD 3713'; PBD 3597'; WOSP
8-14-78 TD 3713'; PBD 3065'; Complete
PB to 3065'
Perf (Yates) 2946-96' (overall)
Natural
8-19-78 COMPLETION ISSUED

8-3-22 NM
IC 30-025-70369-77