

OIL CONSERVATION DIVISION

P.O. Box 2088
 Santa Fe, New Mexico 87504-2088

DISTRICT I
 P.O. Box 1980, Hobbs, NM 88240

DISTRICT II
 P.O. Drawer DD, Artesia, NM 88210

DISTRICT III
 1000 Rio Brazos Rd., Aztec, NM 87410

WELL LOCATION AND ACREAGE DEDICATION PLAT

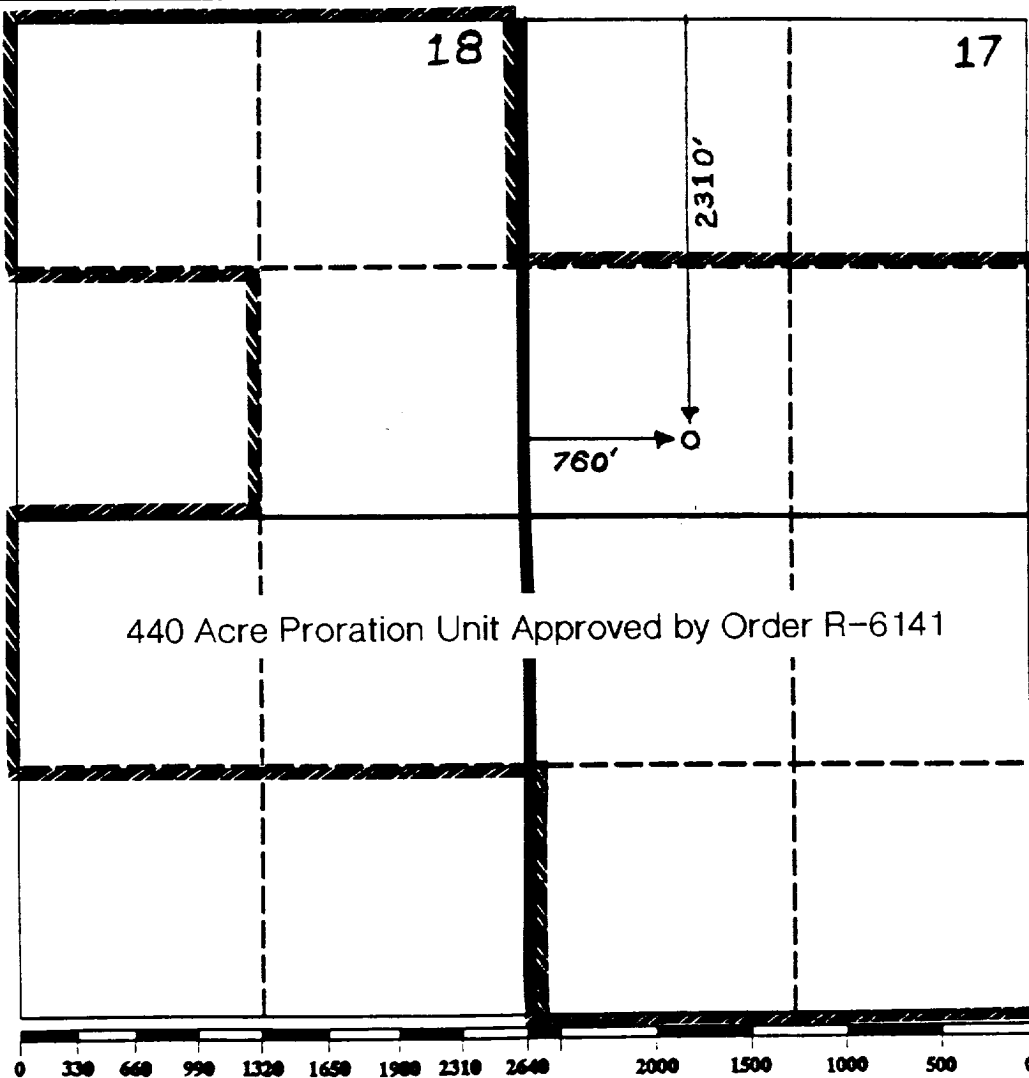
All Distances must be from the outer boundaries of the section

Operator Conoco, Inc.		Lease Meyer A-1		Well No. 20
Unit Letter E	Section 17	Township 21S	Range 36E	County NMPM Lea
Actual Footage Location of Well:				
2310 feet from the North line and		760 feet from the West line		
Ground level Elev. 3649.8'	Producing Formation Yates/7-Rivers/Queen	Pool Fumont Gas	Dedicated Acreage: 440 Acres	

- Outline the acreage dedicated to the subject well by colored pencil or hatchure marks on the plat below.
- If more than one lease is dedicated to the well, outline each and identify the ownership thereof (both as to working interest and royalty).
- If more than one lease of different ownership is dedicated to the well, have the interest of all owners been consolidated by communitization, unitization, force-pooling, etc.?
 Yes No If answer is "yes" type of consolidation _____

If answer is "no" list the owners and tract descriptions which have actually been consolidated. (Use reverse side of this form if necessary.)

No allowable will be assigned to the well until all interests have been consolidated (by communitization, unitization, forced-pooling, or otherwise) or until a non-standard unit, eliminating such interest, has been approved by the Division.



440 Acre Proration Unit Approved by Order R-6141

OPERATOR CERTIFICATION

I hereby certify that the information contained herein is true and complete to the best of my knowledge and belief.

Signature
Jerry W. Hoover
 Printed Name
Jerry W. Hoover
 Position
Sr. Conservation Coord.
 Company
Conoco, Inc.
 Date
7/6/93

SURVEYOR CERTIFICATION

I hereby certify that the well location shown on this plat was plotted from field notes of actual surveys made by me or under my supervision, and that the same is true and correct to the best of my knowledge and belief.

Date Surveyed _____
 Signature & Seal of Professional Surveyor _____
 Certificate No. _____