

District I  
P. O. Box 1980, Hobbs, NM 88241-1980  
District II  
P. O. Drawer DD, Artesia, NM 88211-0719  
District III  
1000 Rio Brazos Rd., Aztec, NM 87410  
District IV  
P. O. Box 2088, Santa Fe, NM 87504-2088

State of New Mexico  
Energy, Minerals & Natural Resources Department  
**OIL CONSERVATION DIVISION**  
P. O. Box 2088  
Santa Fe, NM 87504-2088

Form C-101  
Revised February 10, 1994  
Instructions on back  
Submit to Appropriate District Office  
State Lease - 6 Copies  
Fee Lease - 5 Copies

AMENDED REPORT

**APPLICATION FOR PERMIT TO DRILL, RE-ENTER, DEEPEN, PLUGBACK, OR ADD A ZONE**

<sup>1</sup> Operator Name and Address. <b>Apache Corporation</b> c/o J. O. Easley, Inc. P. O. Box 245 Artesia, NM 88211-0245		<sup>2</sup> OGRID Number 873
		<sup>3</sup> API Number 30-025-34430
<sup>4</sup> Property Code 22503	<sup>5</sup> Property Name Northeast Drinkard Unit	<sup>6</sup> Well No. 232

<sup>7</sup> Surface Location

UL or lot no.	Section	Township	Range	Lot Idn	Feet from the	North/South Line	Feet from the	East/West line	West	County
Lot 14	3	21S	37E		3828	South	1397	West		Lea

<sup>8</sup> Proposed Bottom Hole Location If Different From Surface

UL or lot no. K									
<sup>9</sup> Proposed Pool 1 Eunice; Blinebry- Tubb- Drinkard, North					<sup>10</sup> Proposed Pool 2				

<sup>11</sup> Work Type Code N	<sup>12</sup> Well Type Code O	<sup>13</sup> Cable/Rotary R	<sup>14</sup> Lease Type Code S	<sup>15</sup> Ground Level Elevation 3465
<sup>16</sup> Multiple	<sup>17</sup> Proposed Depth 6,880'	<sup>18</sup> Formation Blinebry/Drinkard	<sup>19</sup> Contractor	<sup>20</sup> Spud Date ASAP

<sup>21</sup> Proposed Casing and Cement Program

Hole size	Casing Size	Casing weight/foot	Setting Depth	Sacks of Cement	Estimated TOC
11"	8 5/8"	24# K-55 STC	1365'	410 sxs PBCZ	circulate to surf
7 7/8"	5 1/2"	17# K-55 LTC	6,880'	850 sxs Hal. Interfill "C" +350 sxs 50/50 Pozmix	circulate to surf

<sup>22</sup> Describe the proposed program. If this application is to DEEPEN or PLUG BACK give the data on the present productive zone and proposed new productive zone. Describe the blowout prevention program, if any. Use additional sheets if necessary.

Propose to drill 11" hole to 1365', run & set 1365' of 8 5/8" and cement, circulate to surface.

Drill 7 7/8" hole to 6,880', run & set 6,880' of 5 1/2" and cement, circulate to surface.

Blow Out Prevention: See attached copy

Permit Expires 1 Year From Approval  
Date Unless Drilling Underway

<sup>23</sup> I hereby certify that the information given above is true and complete to the best of my knowledge and belief. Signature: <i>Michael R. Burch</i> Printed name: Michael R. Burch, CPL Title: Agent for Apache Corporation Date: 6-15-1998 Phone: 505-746-1070	<b>OIL CONSERVATION DIVISION</b>	
	Approved by: ORIGINAL SIGNED BY CHRIS WILLIAMS DISTRICT I SUPERVISOR	
	Title:	
	Approval Date: <i>June 18 1998</i>	Expiration Date:
Conditions of Approval: Attached <input type="checkbox"/>		

*Handwritten initials*

DISTRICT I  
P.O. Box 1980, Hobbs, NM 88241-1980

State of New Mexico  
Energy, Minerals and Natural Resources Department

Form C-102  
Revised February 10, 1994  
Submit to Appropriate District Office  
State Lease - 4 Copies  
Fee Lease - 3 Copies

DISTRICT II  
P.O. Drawer DD, Artesia, NM 88211-0719

DISTRICT III  
1000 Rio Brazos Rd., Aztec, NM 87410

DISTRICT IV  
P.O. BOX 2088, SANTA FE, N.M. 87504-2088

OIL CONSERVATION DIVISION  
P.O. Box 2088  
Santa Fe, New Mexico 87504-2088

AMENDED REPORT

WELL LOCATION AND ACREAGE DEDICATION PLAT

APN 30-025-34430	Page 22900	Eunice Blinebry-Tubb-Drinkard, North
Property Code 22503	Property Name NORTHEAST DRINKARD UNIT	Well Number 232
OGRID No. 873	Operator Name APACHE CORPORATION	Elevation 3465

Surface Location

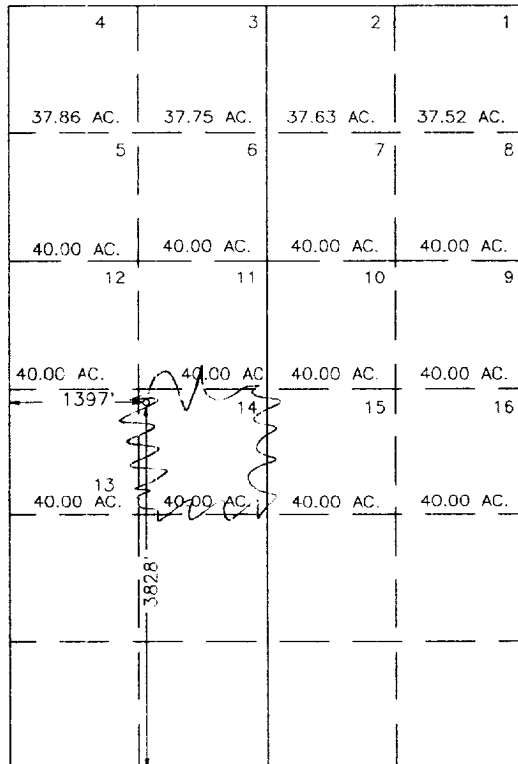
UL or lot No.	Section	Township	Range	Lot Idn	Feet from the	North/South line	Feet from the	East/West line	County
LOT 14	3	2' S	37 E		3828	SOUTH	1397	WEST	LEA

Bottom Hole Location If Different From Surface

UL or lot No.	Section	Township	Range	Lot Idn	Feet from the	North/South line	Feet from the	East/West line	County

Dedicated Acres 40	Joint or Infill	Consolidation Code	Order No.
-----------------------	-----------------	--------------------	-----------

NO ALLOWABLE WILL BE ASSIGNED TO THIS COMPLETION UNTIL ALL INTERESTS HAVE BEEN CONSOLIDATED OR A NON-STANDARD UNIT HAS BEEN APPROVED BY THE DIVISION



OPERATOR CERTIFICATION

I hereby certify the the information contained herein is true and complete to the best of my knowledge and belief.

*Michael R. Burch*  
Michael R. Burch, CPL  
Signature

Agent / Apache Corp.  
Printed Name

6-15-98  
Date

Date

SURVEYOR CERTIFICATION

I hereby certify that the well location shown on this plat was plotted from field notes of actual surveys made by me or under my supervision, and that the same is true and correct to the best of my belief.

JUNE 1, 1998

Date Surveyed DMCC

Signature & Seal of Professional Surveyor

*Ray Blinbom* 6-7-98  
98-11-0786

Certificate No. JOHN W. WEST 676  
ROMAN J. EIDSON 3239  
GARY EIDSON 12641

DISTRICT I  
P.O. Box 1880, Hobbs, NM 88241-1880

State of New Mexico

Energy, Minerals and Natural Resources Department

Form C-102  
Revised February 10, 1994  
Submit to Appropriate District Office  
State Lease - 4 Copies  
Fee Lease - 3 Copies

DISTRICT II  
P.O. Drawer DD, Artesia, NM 88211-0719

DISTRICT III  
1000 Rio Brazos Rd., Aztec, NM 87410

OIL CONSERVATION DIVISION

P.O. Box 2088

Santa Fe, New Mexico 87504-2088

DISTRICT IV  
P.O. BOX 2088, SANTA FE, N.M. 87504-2088

AMENDED REPORT

WELL LOCATION AND ACREAGE DEDICATION PLAT

API Number 30-025-34430	Pool Code 22 900	Pool Name Eunice, Blinberry - T55B - Drinkard N
Property Code 22 503	Property Name NORTHEAST DRINKARD UNIT	Well Number 232
OGRID No. 873	Operator Name APACHE CORPORATION	Elevation 3465

Surface Location

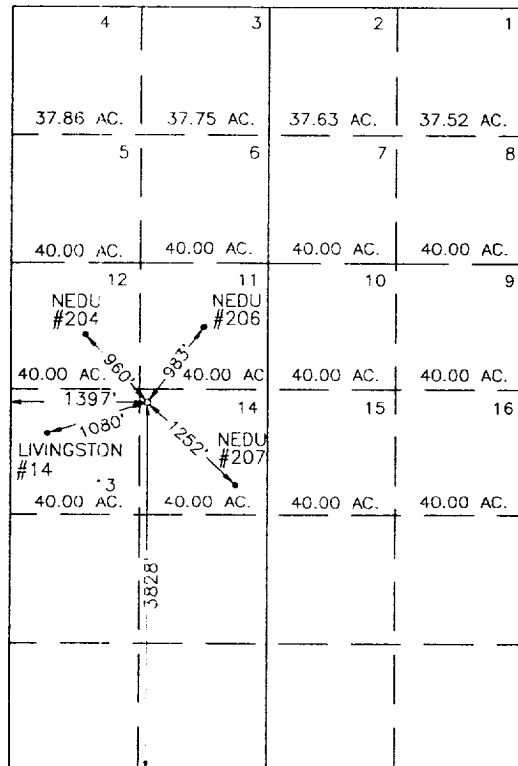
UL or lot No.	Section	Township	Range	Lot Idn	Feet from the	North/South line	Feet from the	East/West line	County
LOT 14	3	21 S	37 E		3828	SOUTH	1397	WEST	LEA

Bottom Hole Location If Different From Surface

UL or lot No.	Section	Township	Range	Lot Idn	Feet from the	North/South line	Feet from the	East/West line	County

Dedicated Acres	Joint or Infill	Consolidation Code	Order No.

NO ALLOWABLE WILL BE ASSIGNED TO THIS COMPLETION UNTIL ALL INTERESTS HAVE BEEN CONSOLIDATED OR A NON-STANDARD UNIT HAS BEEN APPROVED BY THE DIVISION



OPERATOR CERTIFICATION

I hereby certify the the information contained herein is true and complete to the best of my knowledge and belief.

Signature \_\_\_\_\_

Printed Name \_\_\_\_\_

Title \_\_\_\_\_

Date \_\_\_\_\_

SURVEYOR CERTIFICATION

I hereby certify that the well location shown on this plat was plotted from field notes of actual surveys made by me or under my supervision, and that the same is true and correct to the best of my belief.

JUNE 1, 1998

Date Surveyed

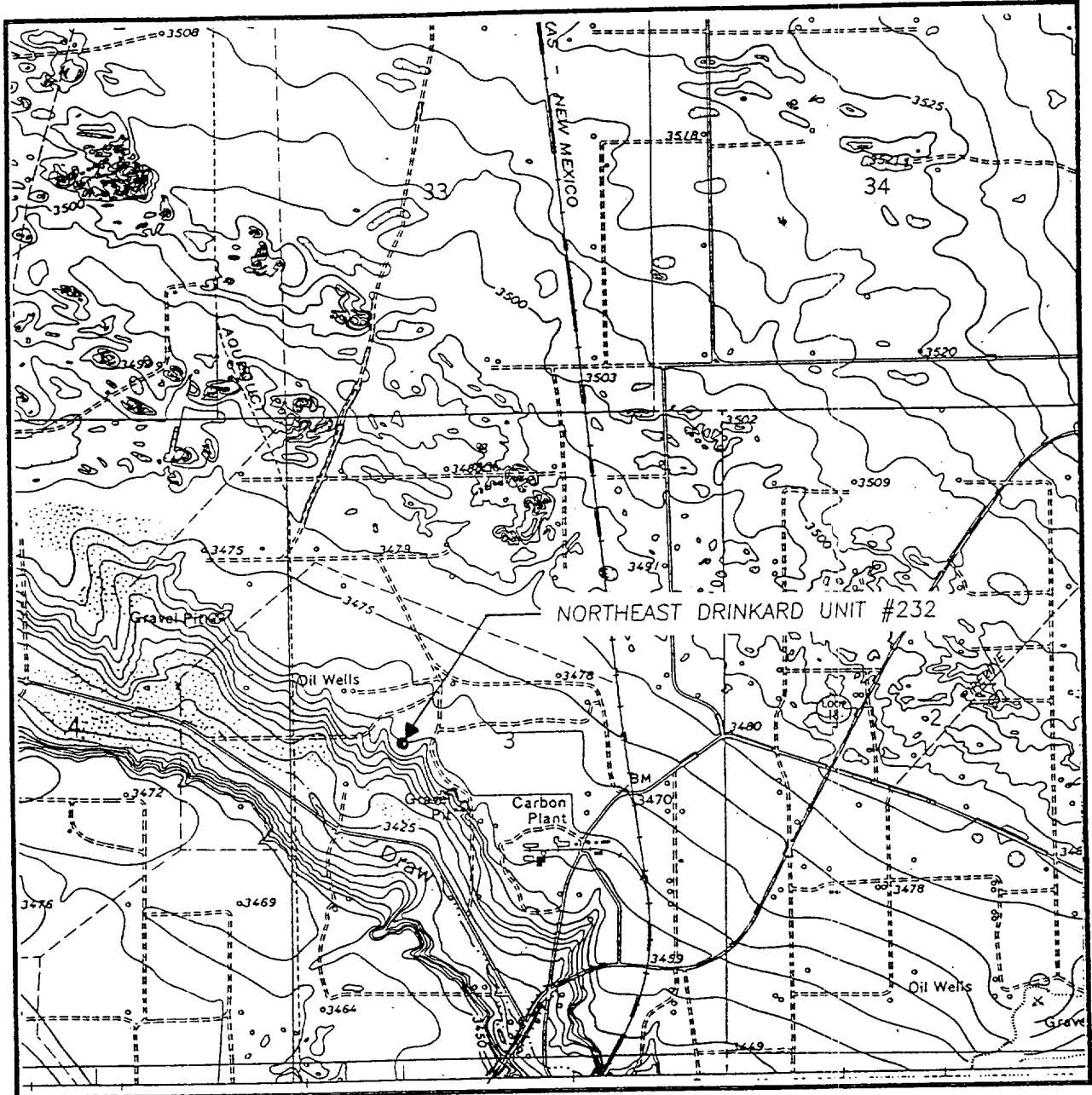
DMCC

Signature & Seal of Professional Surveyor

98-11-0786

Certificate No. JOHN W. WEST 676  
RONALD J. EIDSON 3239  
GARY EIDSON 12641

# LOCATION VERIFICATION MAP



SCALE: 1" = 2000'

CONTOUR INTERVAL:  
HOBBS SW - 5'

SEC. 3 TWP. 21-S RGE. 37-E

SURVEY N.M.P.M.

COUNTY LEA

DESCRIPTION 3828' FSL & 1397' FWL

ELEVATION 3465

OPERATOR APACHE CORPORATION

LEASE NORTHEAST DRINKARD UNIT

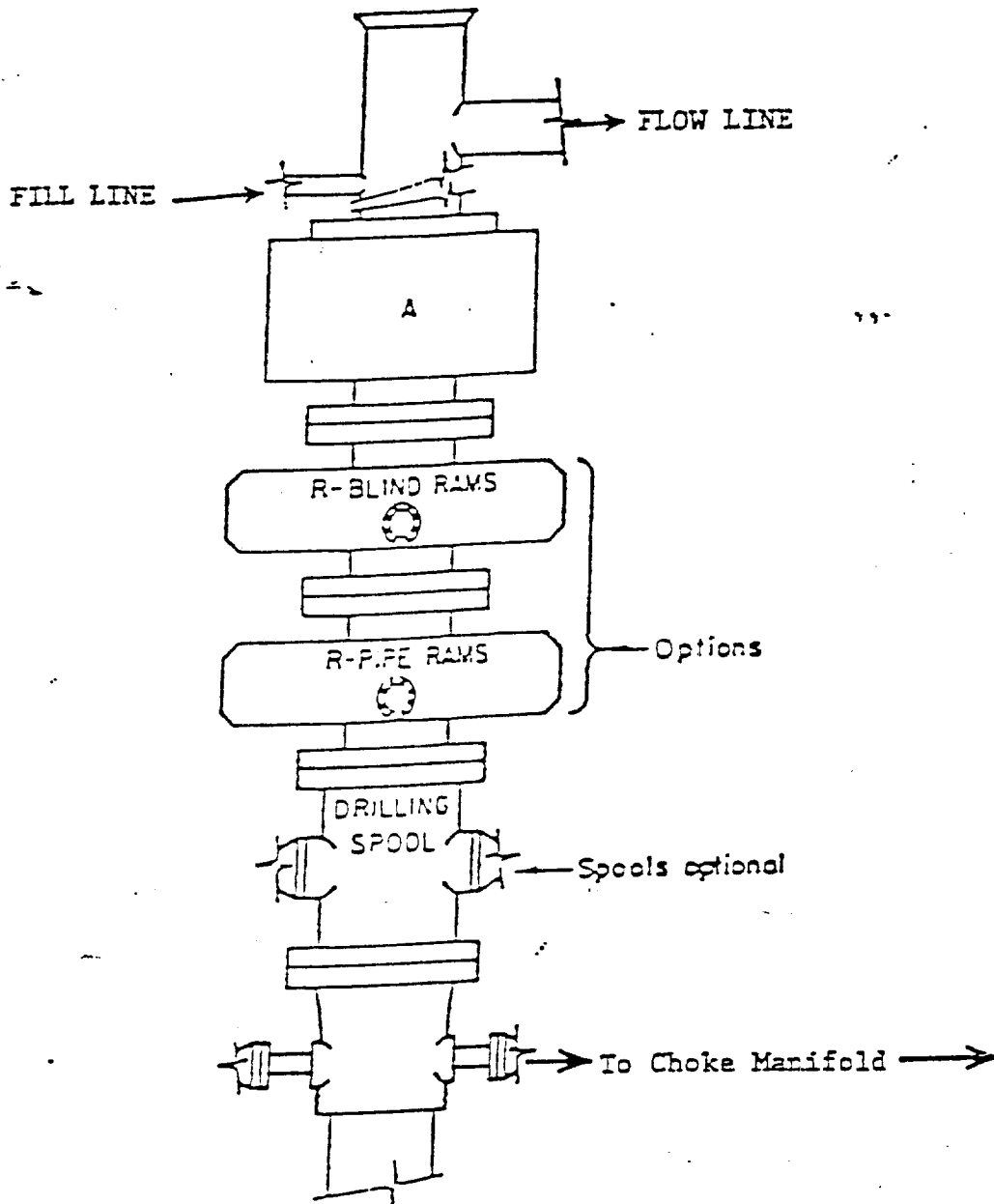
U.S.G.S. TOPOGRAPHIC MAP

HOBBS SW, N.M.

**JOHN WEST ENGINEERING**  
**HOBBS, NEW MEXICO**

**(505) 393-3117**





ARRANGEMENT SRRA

900 Series  
3000 PSI WP