

DISTRICT I
P.O. Box 1980, Hobbs, NM 88241-1980

State of New Mexico

Energy, Minerals and Natural Resources Department

Form C-102

DISTRICT II
P.O. Drawer 88, Artesia, NM 88211-0719

Revised February 10, 1994
Submit to Appropriate District Office
State Lease - 4 Copies
Fee Lease - 3 Copies

DISTRICT III
1000 Rio Brazos Rd., Artesia, NM 87410

OIL CONSERVATION DIVISION

P.O. Box 2088

Santa Fe, New Mexico 87504-2088

DISTRICT IV
P.O. Box 2088, Santa Fe, NM 87504-2088

AMENDED REPORT

WELL LOCATION AND ACREAGE DEDICATION PLAT

API Number 30-025-35287	Pool Code 87520	Pool Name Wilson, Penn, South (Gas)
Property Code 26976	Property Name 20C05 JV-P STATE "23" COM.	Well Number 1
OGRID No.	Operator Name BTA OIL PRODUCERS	Elevation 3663

Surface Location

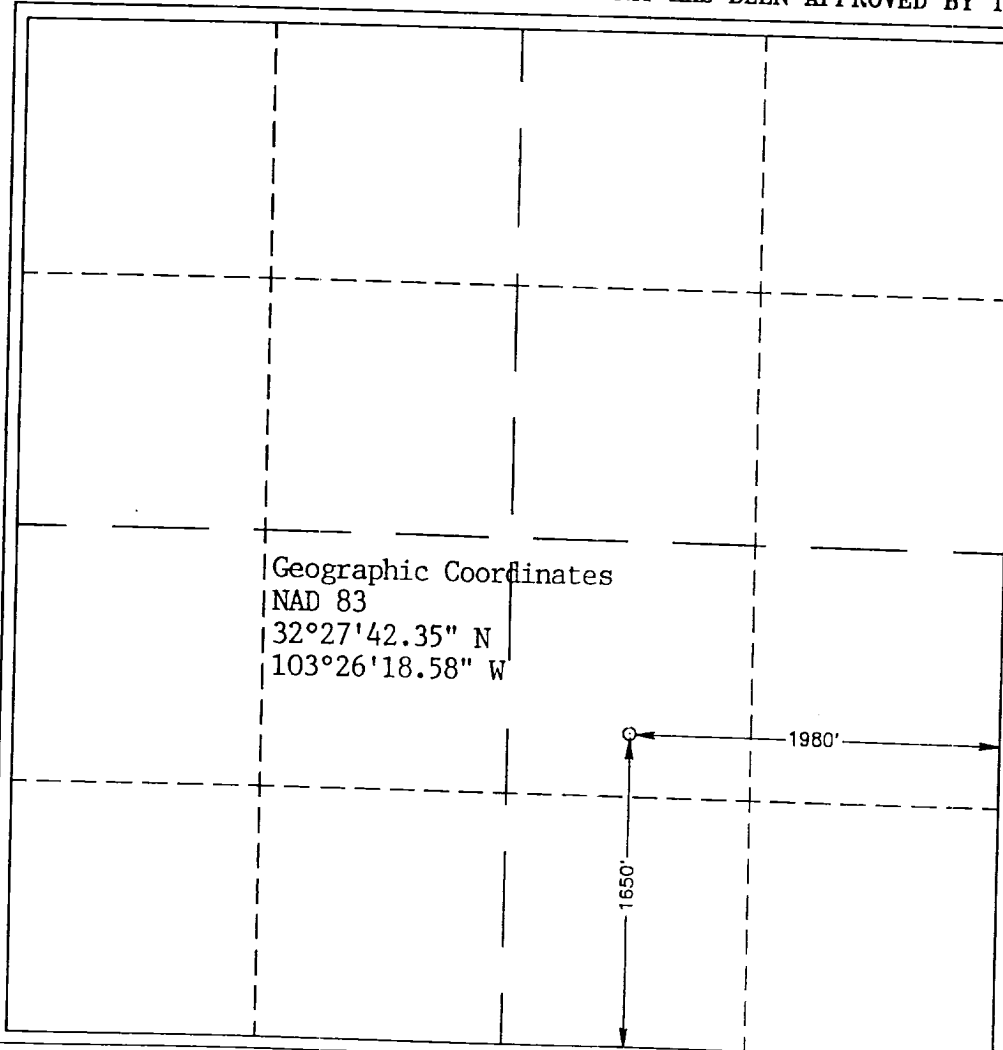
UL or lot No.	Section	Township	Range	Lot Idn	Feet from the	North/South line	Feet from the	East/West line	County
J	23	21 S	34 E		1650	SOUTH	1980	EAST	LEA

Bottom Hole Location If Different From Surface

UL or lot No.	Section	Township	Range	Lot Idn	Feet from the	North/South line	Feet from the	East/West line	County

Dedicated Acres 320	Joint or Infill	Consolidation Code	Order No.
------------------------	-----------------	--------------------	-----------

NO ALLOWABLE WILL BE ASSIGNED TO THIS COMPLETION UNTIL ALL INTERESTS HAVE BEEN CONSOLIDATED OR A NON-STANDARD UNIT HAS BEEN APPROVED BY THE DIVISION



OPERATOR CERTIFICATION

I hereby certify the the information contained herein is true and complete to the best of my knowledge and belief.

Pam Inskeep
Signature
Pam Inskeep
Printed Name
Regulatory Administrator
Title
12/09/00
Date

SURVEYOR CERTIFICATION

I hereby certify that the well location shown on this plat was plotted from field notes of actual surveys made by me or under my supervision, and that the same is true and correct to the best of my belief.

NOVEMBER 15, 2000
Date Surveyed
Signature & Seal of Professional Surveyor
Ronald J. Eidson 11/21/00
W.O. Num. 00-11-1493

Certificate No. RONALD J. EIDSON, 3239
GARY G. EIDSON, 12641