

NO. OF COPIES RECEIVED		
DISTRIBUTION		
SANTA FE		
FILE		
U.S.G.S.		
LAND OFFICE		
OPERATOR		

NEW MEXICO OIL CONSERVATION COMMISSION

Form C-101  
Revised 1-1-65

5A. Indicate Type of Lease  
STATE  FEE

5. State Oil & Gas Lease No.

APPLICATION FOR PERMIT TO DRILL, DEEPEN, OR PLUG BACK

1a. Type of Work  
b. Type of Well DRILL  DEEPEN  PLUG BACK   
OIL WELL  GAS WELL  OTHER  SINGLE ZONE  MULTIPLE ZONE

2. Name of Operator  
EXXON CORPORATION

3. Address of Operator  
P. O. Box 1600, MIDLAND TEXAS 79701

4. Location of Well  
UNIT LETTER C LOCATED 760 FEET FROM THE North LINE  
AND 1,780 FEET FROM THE West LINE OF SEC. 12 TWP. 22S RGE. 37E NMPM

7. Unit Agreement Name

8. Farm or Lease Name  
Whitaker & Perkins

9. Well No.  
2

10. Field and Pool, or Wildcat  
Wantz Granite Wash and Drinkard

12. County  
Lea

19. Proposed Depth  
7,600'

19A. Formation  
Granite Wash and Drinkard

20. Rotary or C.T.  
Rotary

21. Elevations (Show whether DF, RT, etc.)  
To be filed later

21A. Kind & Status Plug. Bond  
Blanket on file

21B. Drilling Contractor  
Unknown

22. Approx. Date Work will start  
September 15, 1975

PROPOSED CASING AND CEMENT PROGRAM

SIZE OF HOLE	SIZE OF CASING	WEIGHT PER FOOT	SETTING DEPTH	SACKS OF CEMENT	EST. TOP
13 3/4"	10 3/4"	40.5#	1,200'	700	Circ. to surface
8 3/4"	7"	23 & 26#	7,600	1,000	1,200*

\*Circ. back into surface casing @ 1,200' to protect from corrosive water.

Howco method of cementing to be used. A diagrammatic sketch and specifications of Blowout Preventer equipment is attached.

Mud Program: 0-1,200' Fresh Water or Spud Mud  
1,200'-6,000' 10# Brine Water Mud  
6,000'-T.D. 10.0 - 10.2 Brine Water Mud

APPROVAL VALID  
FOR 90 DAYS UNLESS  
DRILLING COMMENCED,

EXPIRES Dec. 2, 1975

IN ABOVE SPACE DESCRIBE PROPOSED PROGRAM: IF PROPOSAL IS TO DEEPEN OR PLUG BACK, GIVE DATA ON PRESENT PRODUCTIVE ZONE AND PROPOSED NEW PRODUCTIVE ZONE. GIVE BLOWOUT PREVENTER PROGRAM, IF ANY.

I hereby certify that the information above is true and complete to the best of my knowledge and belief.

Signed Melba Knipling Melba Knipling Title Proration Specialist Date August 29, 1975

(This space for State Use)

APPROVED BY John W. Runyan TITLE Geologist DATE SEP 2 1975

CONDITIONS OF APPROVAL, IF ANY:

Exxon Lse. No. \_\_\_\_\_

NEW MEXICO OIL CONSERVATION COMMISSION

Form C-102  
Supersedes C-128  
Effective 1-1-65

State Lse. No. \_\_\_\_\_

WELL LOCATION AND ACREAGE DEDICATION PLAT

Federal Lse. No. \_\_\_\_\_

All distances must be from the outer boundaries of the Section.

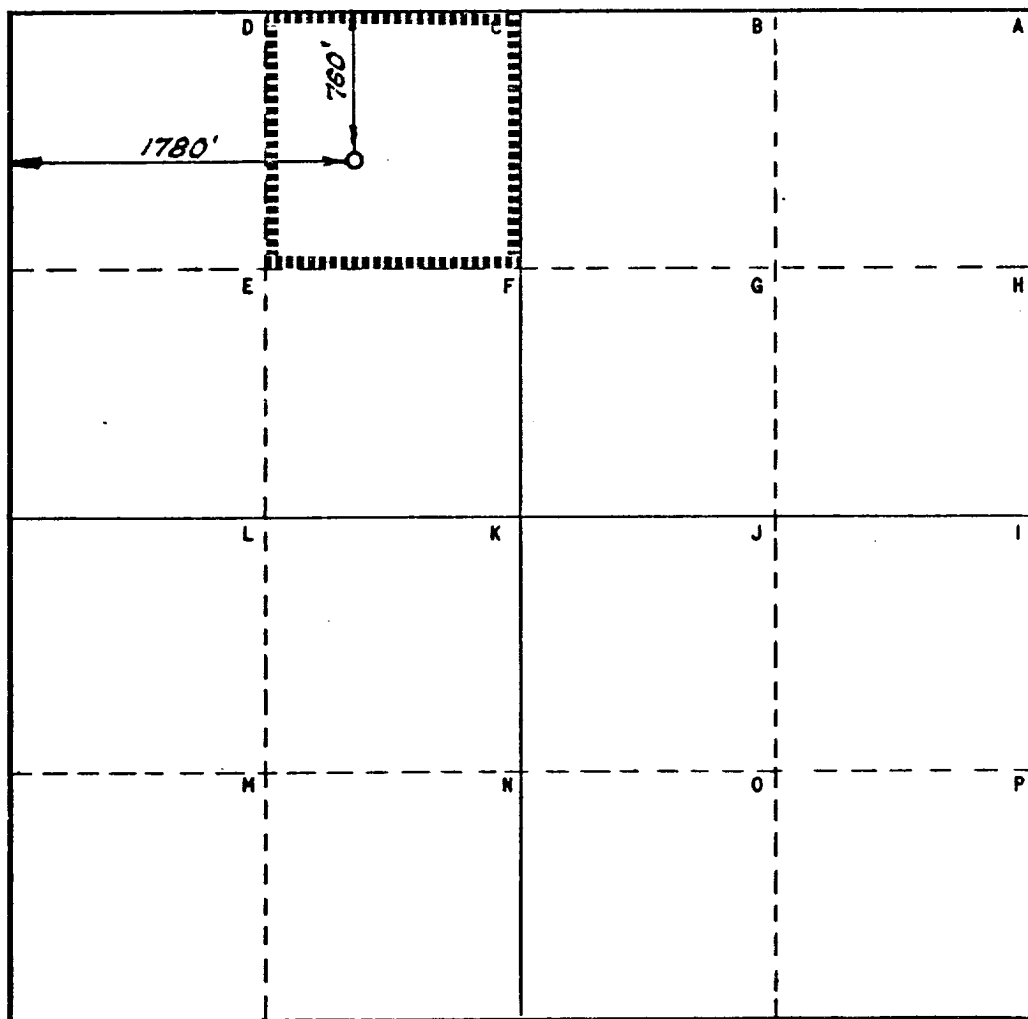
Operator <b>Exxon Corporation</b>		Lease <b>WHITAKER &amp; PERKINS</b>			Well No. <b>2</b>
Unit Letter <b>C</b>	Section <b>12</b>	Township <b>22 SOUTH</b>	Range <b>37 EAST</b>	County <b>LEA</b>	
Actual Footage Location of Well: <b>760</b> feet from the <b>NORTH</b> line and <b>1780</b> feet from the <b>WEST</b> line					
Ground Level Elev:	Producing Formation <b>Granite Wash &amp; Drinkard</b>		Pool <b>Wantz Granite Wash &amp; Drinkard</b>		Dedicated Acreage: <b>40</b> Acres

1. Outline the acreage dedicated to the subject well by colored pencil or hachure marks on the plat below.
2. If more than one lease is dedicated to the well, outline each and identify the ownership thereof (both as to working interest and royalty).
3. If more than one lease of different ownership is dedicated to the well, have the interests of all owners been consolidated by communitization, unitization, force-pooling, etc?

Yes  No If answer is "yes," type of consolidation \_\_\_\_\_

If answer is "no," list the owners and tract descriptions which have actually been consolidated. (Use reverse side of this form if necessary.) \_\_\_\_\_

No allowable will be assigned to the well until all interests have been consolidated (by communitization, unitization, forced-pooling, or otherwise) or until a non-standard unit, eliminating such interests, has been approved by the Commission.



CERTIFICATION

I hereby certify that the information contained herein is true and complete to the best of my knowledge and belief.

Name  
*Melba Kripling*  
Position  
*Proration Specialist*

Company **Exxon Corporation**  
**Box 1600 Midland, Texas**

Date  
**8-29-'75**

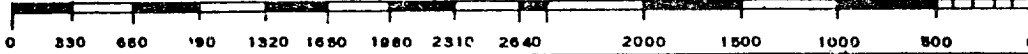
I hereby certify that the well location shown on this plat was plotted from field notes of actual surveys made by me or under my supervision, and that the same is true and correct to the best of my knowledge and belief.

Date Surveyed  
**8-28-'75**

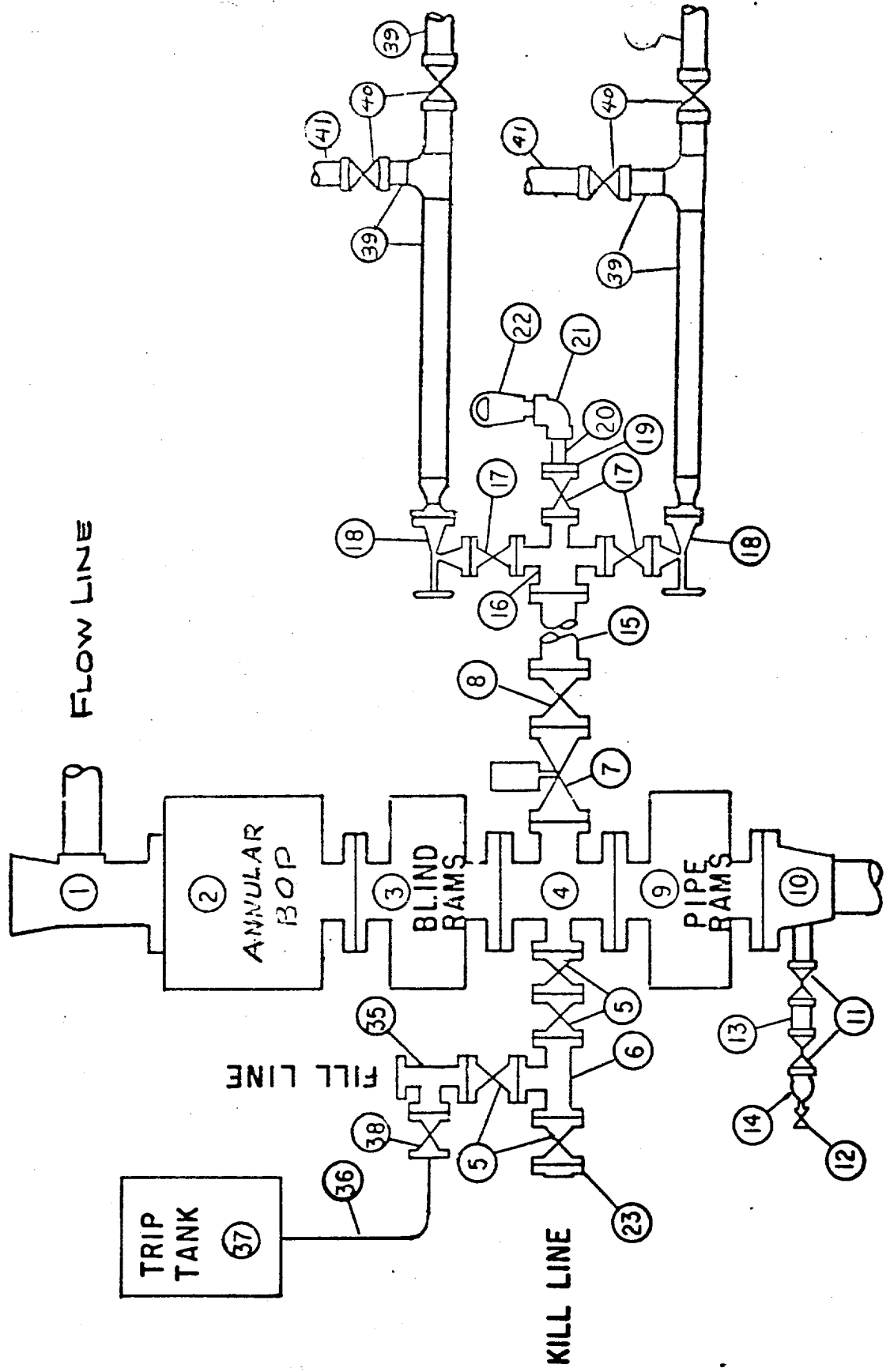
Registered Professional Engineer and/or Land Surveyor

*[Signature]*

Certificate No.  
**Texas 1345**



MIDLAND DRILLING ORGANIZATION  
**BLOWOUT PREVENTER SPECIFICATION**  
 TYPE II - C



**BLOWOUT PREVENTER SPECIFICATION**  
**EQUIPMENT DESCRIPTION**

---

**TYPE II-C**

All equipment should be at least 3000 psi WP or higher unless otherwise specified.

1. Bell nipple.
2. Hydril or Shaffer bag type preventer.
3. Ram type pressure operated blowout preventer with blind rams.
4. Flanged spool with one 4-inch and one 2-inch (minimum) outlet.
5. 2-inch (minimum) flanged plug or gate valve.
6. 2-inch by 2-inch by 2-inch (minimum) flanged tee.
7. 4-inch pressure operated gate valve.
8. 4-inch flanged gate or plug valve.
9. Ram type pressure operated blowout preventer with pipe rams.
10. Flanged type casing head with one side outlet (furnished by Exxon).
11. 2-inch threaded (or flanged) plug or gate valve (furnished by Exxon).  
Flanged on 5000# WP, threaded on 3000# WP or less.
12. Needle valve (furnished by Exxon).
13. 2-inch nipple (furnished by Exxon).
14. Tapped bull plug (furnished by Exxon).
15. 4-inch flanged spacer spool.
16. 4-inch by 2-inch by 2-inch by 2-inch flanged cross.
17. 2-inch flanged plug or gate valve.
18. 2-inch flanged adjustable choke.
19. 2-inch threaded flange.
20. 2-inch XXH nipple.
21. 2-inch forged steel 90° Ell.
22. Cameron (or equal.) threaded pressure gage.
23. Threaded flange.
  
35. 2-inch flanged tee.
36. 3-inch (minimum) hose. (Furnished by Exxon).
37. Trip tank. (Furnished by Exxon).
38. 2-inch flanged plug or gate valve.
39. 2-1/2-inch pipe, 300' to pit, anchored.
40. 2-1/2-inch SE valve.
41. 2-1/2-inch line to steel pit or separator.

NOTES:

1. Items 3, 4 and 9 may be replaced with double ram type preventer with side outlets between the rams.
2. The two valves next to the stack on the fill and kill line to be closed unless drill string is being pulled.
3. Kill line is for emergency use only. This connection shall not be used for filling.
4. Replacement pipe rams and blind rams shall be on location at all times.
5. Only type U, LWS and QRC ram type preventers with secondary seals are acceptable for 5000 psi WP and higher BOP stacks.
6. Type E ram-type BOP's with factory modified side outlets may be used on 3000 psi or lower WP BOP stacks.

113