

NEW MEXICO OIL CONSERVATION COMMISSION
WELL LOCATION AND ACREAGE DEDICATION PLAT

Form C-102
Supersedes C-128
Effective 1-1-85

All distances must be from the outer boundaries of the Section

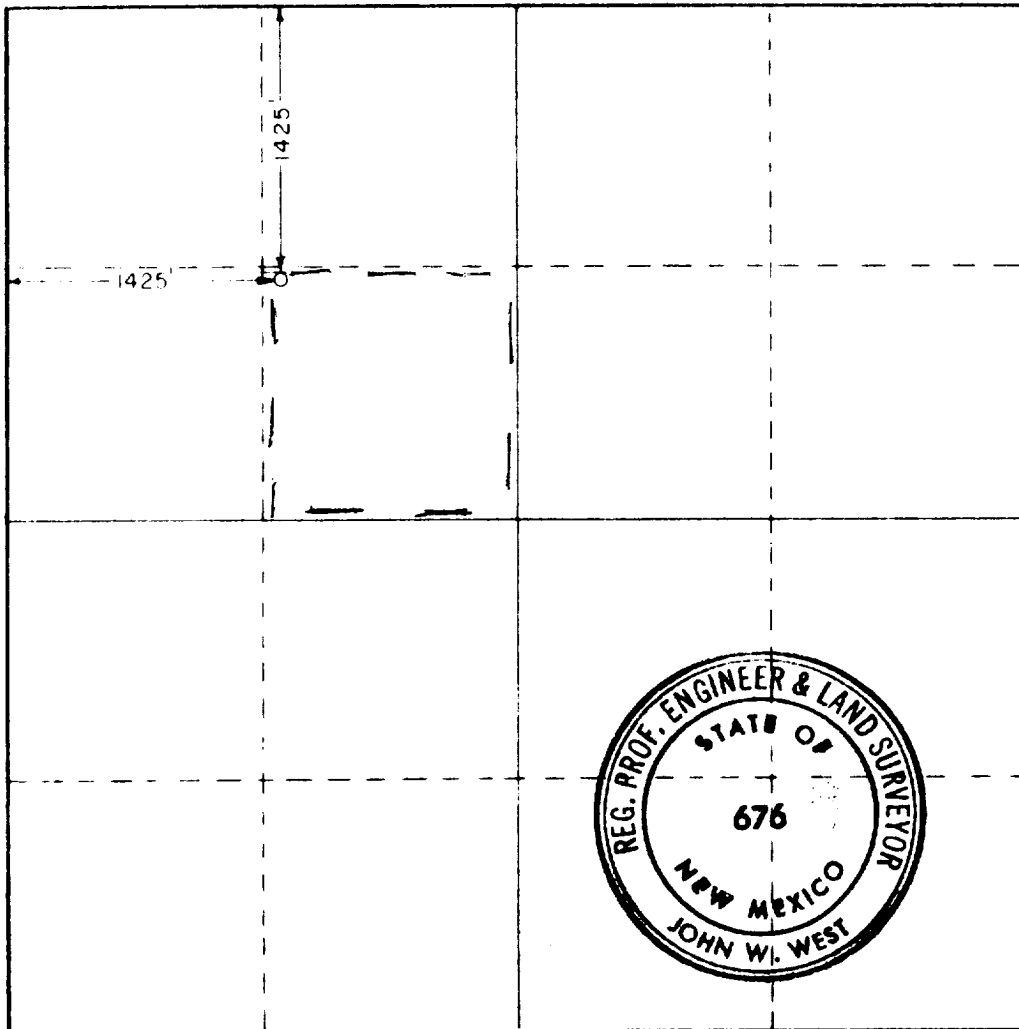
Order ANADARKO PRODUCTION CO.		Lease LMPSU TRACT 21			Well No. 9
Section Letter F	Section 34	Township 22 SOUTH	Range 37 EAST	County LEA	
Well Location of Well:					
1425 feet from the NORTH line and		1425 feet from the WEST line			
Ground Level Elev. 3330.7	Producing Formation Queen	Pool Langlie Mattix		Dedicated Acreage: 40 Acres	

- Outline the acreage dedicated to the subject well by colored pencil or hachure marks on the plat below.
- If more than one lease is dedicated to the well, outline each and identify the ownership thereof (both as to working interest and royalty).
- If more than one lease of different ownership is dedicated to the well, have the interests of all owners been consolidated by communitization, unitization, force-pooling, etc?

Yes No If answer is "yes," type of consolidation _____

If answer is "no," list the owners and tract descriptions which have actually been consolidated. (Use reverse side of this form if necessary.) _____

No allowable will be assigned to the well until all interests have been consolidated (by communitization, unitization, force-pooling, or otherwise) or until a non-standard unit, eliminating such interests, has been approved by the Commission.



CERTIFICATION

I hereby certify that the information contained herein is true and complete to the best of my knowledge and belief.

John C. English
Name

John C. English
Position
Area Supervisor

Anadarko Production Company

Date
October 31, 1983

I hereby certify that the well location shown on this plat was plotted from field notes of actual surveys made by me or under my supervision, and that the same is true and correct to the best of my knowledge and belief.

Date Surveyed
OCTOBER 13, 1983

Registered Professional Engineer and or Land Surveyor

John W. West
Certificate No. JOHN W. WEST, 676

RONALD J. EIDSON, 3239

RECEIVED
NOV 1 1983
C.C.P.
HOBBS OFFICE

473